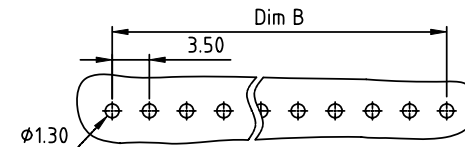
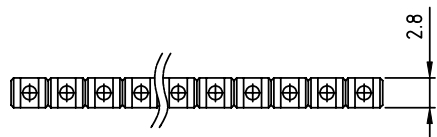
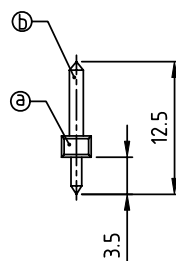
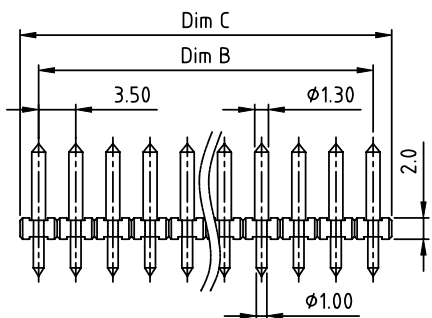


PRODUCT NUMBER	PITCH
OPxx22x000J0G	3.50 mm



RECOMMENDED P.C.B LAYOUT
TOP VIEW



Material:
 ● Item ② Housing: Thermoplastic, Black color (UL94V-0)
 ● Item ① Contact pin: Brass, Tin or Au plated.

Electrical: cULus
 ● Voltage rating: 300V
 ● Current rating: 10A
 ● Withstanding Voltage: 1.6KV
 ● Operating temperature: -40°C to +115°C
 ● Soldering temperature: 260°C±5°C/5 Sec
 ● Safety Approval:

DIMENSION

Dim B	(N-1)×3.50
Dim C	N×3.50

N=Number of poles

Poles	Tolerance
2p-5p	±0.10
6p-9p	±0.15
10p-13p	±0.20
14p-17p	±0.25
18p-24p	±0.30

PART NO.: OP xx 22 x 0 00J0 G

Solid block
 No. of poles
 02 2 poles
 03 3 poles

 24 24 poles
 0 Tin plating 120u" Min
 1 Gold plating 10u"
 2 Gold flash
 RoHS compliant
 (lead<4%)
 In copper Alloy

mat'l. code				surface ASME Y14.5	tolerance ASME Y14.5	projection 	product family TERMINAL BLOCK
ltr	ecn no	dr	date	tolerances unless otherwise specified		MM	title TERMINAL BLOCK
				angles 	X.±0.5		
				$X^{\circ}\pm 1^{\circ}$	X.XX±0.3	scale	PLUGGABLE SOCKET, VERTICAL, 12.5mm HEIGHT
					X.XX±0.1		
		dr	EVIN ZHONG	041714		sheet 1 of 1	size A4
		enr	EVIN ZHONG	041714			
		chr	HANKE FENG	041714			
		appd	SHI JUN	041714			
sheet index	revision sheet	A	1				type CUSTOMER Drawing