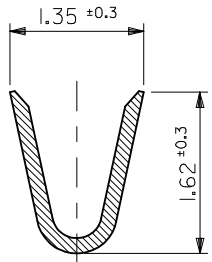
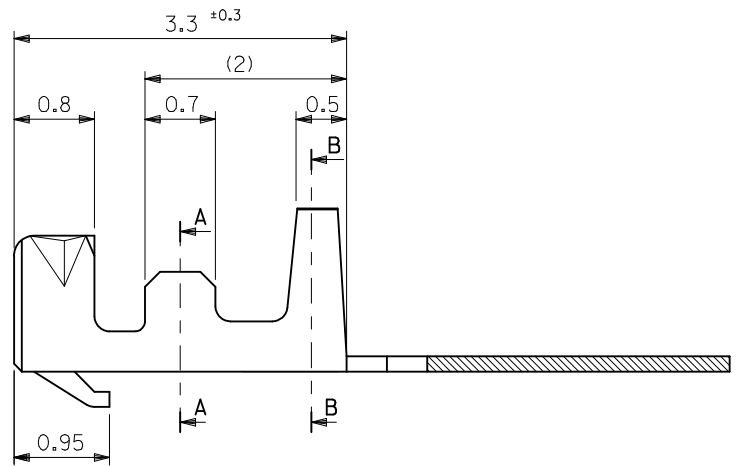
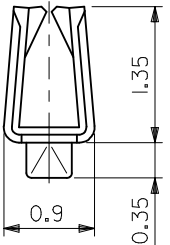


SECT. A-A



SECT. B-B



- NOTES**
1. MATERIAL : PHOSPHOR BRONZE, 0.152mm THICKNESS
 2. PLATING : TIN(Sn)0.9μm MINIMUM. PRE-PLATED
 3. APPLICABLE HOUSING : 104047-0490
 4. APPLICABLE WIRE RANGE : AWG#28 -AWG#30

NEW RELEASED EC NO: KOR2010-0066 DRWN:CBCHN 2009/10/15 CHKD:WYANG 2009/10/20 APPR:YUNSIKKIM 2009/10/21	DESCRIPTION REV A	QUALITY SYMBOLS	GENERAL TOLERANCES (UNLESS SPECIFIED)	DIMENSION STYLE	SCALE	DESIGN UNITS	THIRD ANGLE PROJECTION
		▽=0 ◻=0	mm INCH 4 PLACES ± --- ± --- 3 PLACES ± --- ± --- 2 PLACES ± 0.3 ± --- 1 PLACE ± 0.3 ± --- ANGULAR ± 3 °	MM ONLY	1:1	METRIC	
			DRAFT WHERE APPLICABLE MUST REMAIN WITHIN DIMENSIONS	DRAWN BY	DATE	TITLE	
				SK.HAN	2009/03/17	1.25/2.0MM W/B CONN. CRIMP REC' TERMINAL	
				CHECKED BY	DATE		
				WY.YANG	2009/03/17		
				APPROVED BY	DATE		
				WY.YANG	2009/03/17		
				MATERIAL NO.	DOCUMENT NO.		
				1044668002	SD-104466-001		
				SIZE	THIS DRAWING CONTAINS INFORMATION THAT IS PROPRIETARY TO MOLEX INCORPORATED AND SHOULD NOT BE USED WITHOUT WRITTEN PERMISSION		
				A3			
							SHEET NO. 1 OF 01