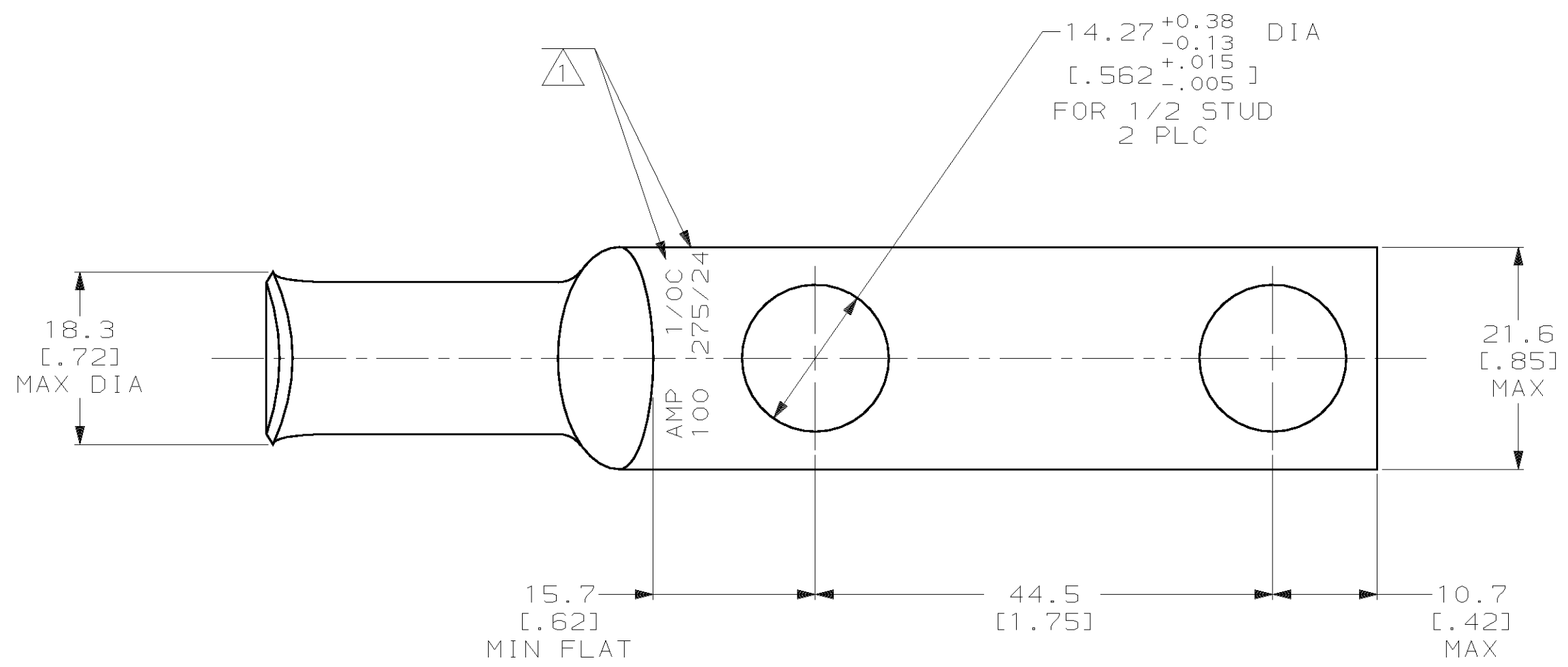


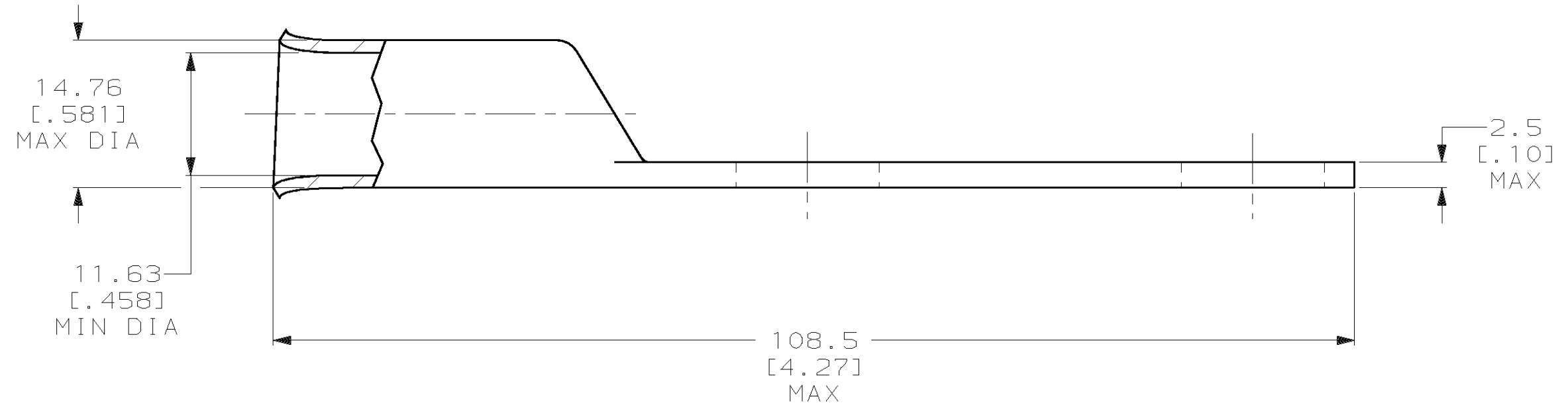
THIS DRAWING IS UNPUBLISHED. RELEASED FOR PUBLICATION, 19 .  
 © COPYRIGHT 19 BY AMP INCORPORATED. ALL INTERNATIONAL RIGHTS RESERVED.

LOC		DIST		P		F		ZONE		LTR		REVISIONS		DATE	APPD	
G		86											E	REV PER 0G3A-0561-01	030CT02	JR/MS

**METRIC**  
 DIMENSIONS LISTED IN mm [ INCHES ]



1 STAMP AMP 1/0C 100 275/24 APPROX AS SHOWN



53680

53680-2  
 PART NO

**AMP INCORPORATED**  
**CUSTOMER SERVICE SYSTEMS**

MAX RECOMMENDED OPERATING TEMPERATURE:  
 170°C MAX

DO NOT SCALE PRINT. UNLESS SPECIFIED DIMENSIONS IN mm [INCHES] TOLERANCES ON:  
 2 PLC DEC ± 0.20 [.008]  
 3 PLC DEC ± -  
 ANGLES ± -

DR 30AUG94 DK SCHRUM  
 CHK 31AUG94 AJ KAUFMAN  
 APPD 31AUG94 RE ROSER  
 APPD 31AUG94 JL MECKLEY

**AMP** AMP Incorporated  
 Harrisburg, PA 17105-3608

FOR ADDITIONAL PRODUCT INFORMATION OR COPIES OF DRAWINGS AND TECHNICAL DOCUMENTS

PRODUCT INFORMATION CENTER  
 1-800-522-6752

VOLTAGE RATING:  
 NOT APPLICABLE

MATERIAL  
 COPPER PER ASTM B-75 ANNEALED

PRODUCT SPEC  
 -

NAME  
 TERMINAL, AMPOWER,  
 WIRE SIZE: 1/0 AWG

FOR APPLICATION TOOLING INFORMATION

TOOLING ASSISTANCE CENTER  
 1-800-722-1111

CIRCULAR MIL AREA:  
 42.41-60.55mm<sup>2</sup> [83,700-119,500] CIR MILS STRANDED

FINISH  
 TIN PLATE  
 0.00381 [.000150] MIN THK PER MIL-T-10727

APPLICATION SPEC  
 -

SIZE  
 C 00779  
 DRAWING NO  
 C=53680

FOR ORDER ENTRY  
 1-800-526-5142

THIS DRAWING IS A CONTROLLED DOCUMENT FOR AMP INCORPORATED. IT IS SUBJECT TO CHANGE AND THE CONTROLLING ENGINEERING ORGANIZATION SHOULD BE CONTACTED FOR THE LATEST REVISION.

WEIGHT  
 -

SCALE 2:1  
 SHEET 1 OF 1