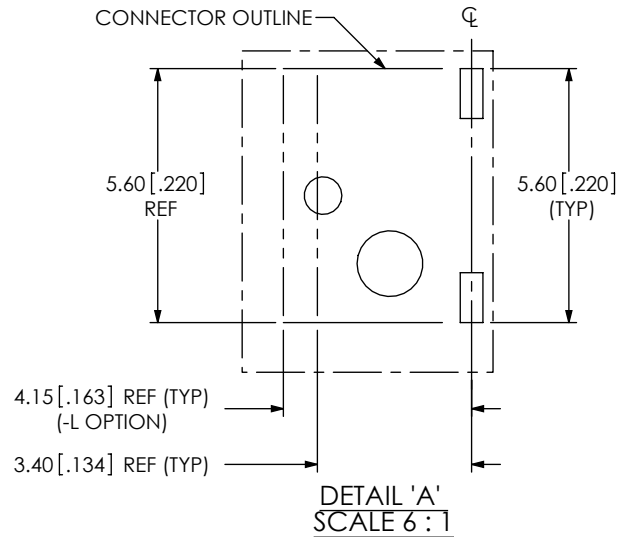
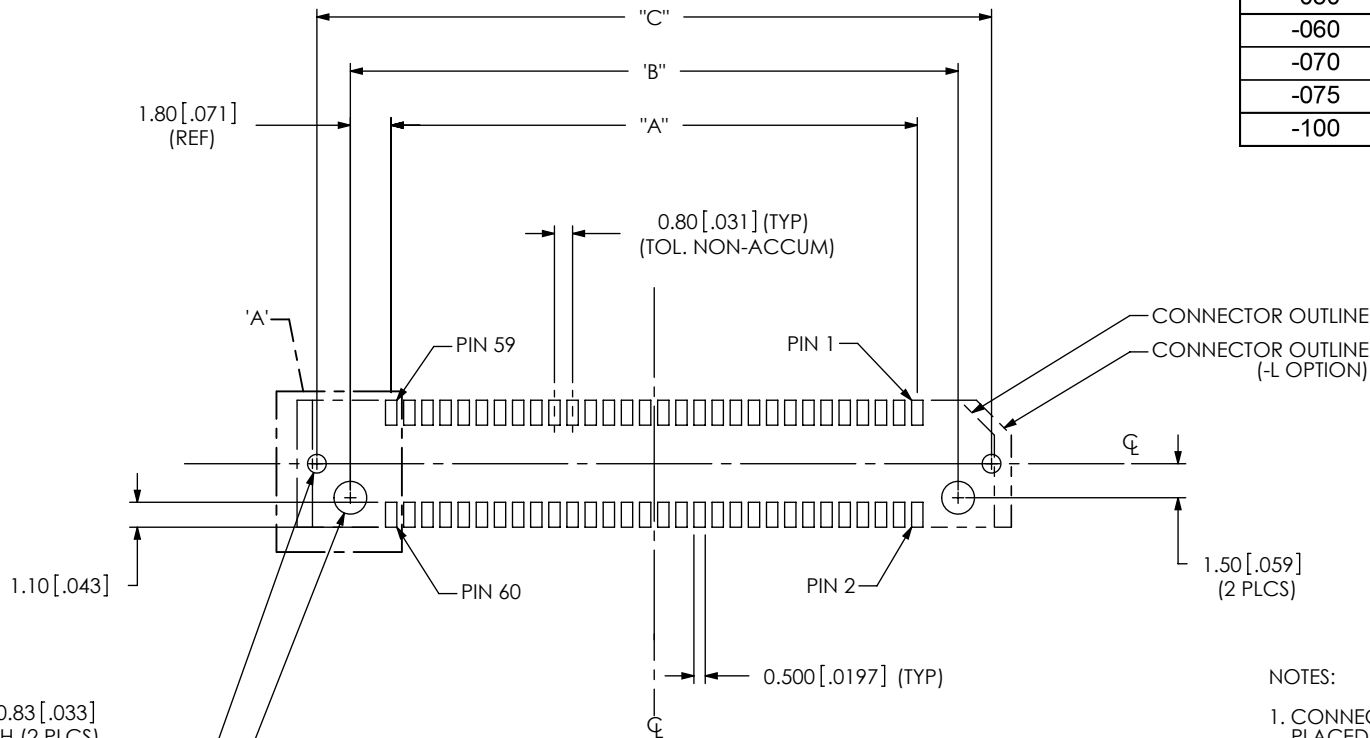


DESIGNED & DIMENSIONED
IN MILLIMETERS [INCHES]



| TABLE 1 | | | |
|----------|---------------|---------------|---------------|
| POSITION | "A" | "B" | "C" |
| -005 | 3.20 [.126] | 6.80 [.268] | 9.80 [.386] |
| -010 | 7.20 [.283] | 10.80 [.425] | 13.80 [.543] |
| -011 | 8.00 [.315] | 11.60 [.457] | 14.60 [.575] |
| -013 | 9.60 [.378] | 13.20 [.520] | 16.20 [.638] |
| -020 | 15.20 [.598] | 18.80 [.740] | 21.80 [.858] |
| -023 | 17.60 [.693] | 21.20 [.835] | 24.20 [.953] |
| -025 | 19.20 [.756] | 22.80 [.898] | 25.80 [1.016] |
| -030 | 23.20 [.913] | 26.80 [1.055] | 29.80 [1.173] |
| -035 | 27.20 [1.071] | 30.80 [1.213] | 33.80 [1.331] |
| -040 | 31.20 [1.228] | 34.80 [1.370] | 37.80 [1.488] |
| -049 | 38.40 [1.512] | 42.00 [1.654] | 45.00 [1.772] |
| -050 | 39.20 [1.543] | 42.80 [1.685] | 45.80 [1.803] |
| -060 | 47.20 [1.858] | 50.80 [2.000] | 53.80 [2.118] |
| -070 | 55.20 [2.173] | 58.80 [2.315] | 61.80 [2.433] |
| -075 | 59.20 [2.331] | 62.80 [2.472] | 65.80 [2.591] |
| -100 | 79.20 [3.118] | 82.80 [3.260] | 85.80 [3.378] |



L $\phi 0.83$ [.033] PTH (2 PLCS) (-L OPTION ONLY) TO BE SOLDERED USING PASTE-IN-HOLE TECHNOLOGY

L $\phi 1.45$ [.057] NPTH (2 PLCS)

FIG 1
ALL OPTIONS EXCEPT - EGPS (-030 POSITION SHOWN)
(ALL DIMENSIONS ARE SYMMETRIC ABOUT THE CENTERLINE)

NOTES:

1. CONNECTOR ENVELOPE DIMENSIONS. OTHER COMPONENTS PLACED ON PCB SHALL AVOID THIS ZONE.

PROPRIETARY NOTE

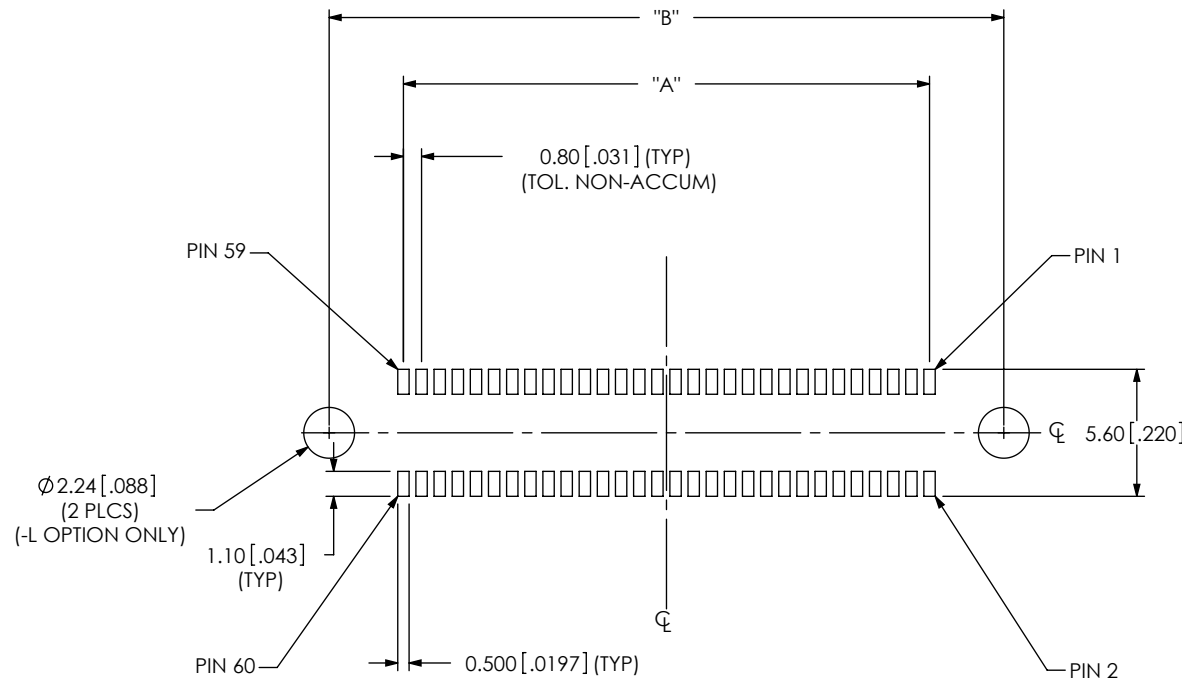
THIS DOCUMENT CONTAINS INFORMATION CONFIDENTIAL AND PROPRIETARY TO SAMTEC, INC. AND SHALL NOT BE REPRODUCED OR TRANSFERRED TO OTHER DOCUMENTS OR DISCLOSED TO OTHERS OR USED FOR ANY PURPOSE OTHER THAN THAT WHICH IT WAS OBTAINED WITHOUT THE EXPRESSED WRITTEN CONSENT OF SAMTEC, INC.



520 PARK EAST BLVD, NEW ALBANY, IN 47150
PHONE: 812-944-6733 FAX: 812-948-5047
e-Mail: info@SAMTEC.com code: 55322

NOTE:
STENCIL TO BE 0.15[.006] THICK.

DESIGNED & DIMENSIONED
IN MILLIMETERS[INCHES]



| TABLE 2 | | |
|----------|---------------|---------------|
| POSITION | "A" | "B" |
| -005 | 3.20 [.126] | 9.80 [.386] |
| -010 | 7.20 [.283] | 13.80 [.543] |
| -011 | 8.00 [.315] | 14.60 [.575] |
| -013 | 9.60 [.378] | 16.20 [.638] |
| -020 | 15.20 [.598] | 21.80 [.858] |
| -023 | 17.60 [.693] | 24.20 [.953] |
| -025 | 19.20 [.756] | 25.80 [1.016] |
| -030 | 23.20 [.913] | 29.80 [1.173] |
| -035 | 27.20 [1.071] | 33.80 [1.213] |
| -040 | 31.20 [1.228] | 37.80 [1.488] |
| -049 | 38.40 [1.512] | 45.00 [1.772] |
| -050 | 39.20 [1.543] | 45.80 [1.803] |
| -060 | 47.20 [1.858] | 53.80 [2.118] |
| -070 | 55.20 [2.173] | 61.80 [2.433] |
| -075 | 59.20 [2.331] | 65.80 [2.591] |
| -100 | 79.20 [3.118] | 85.80 [3.378] |

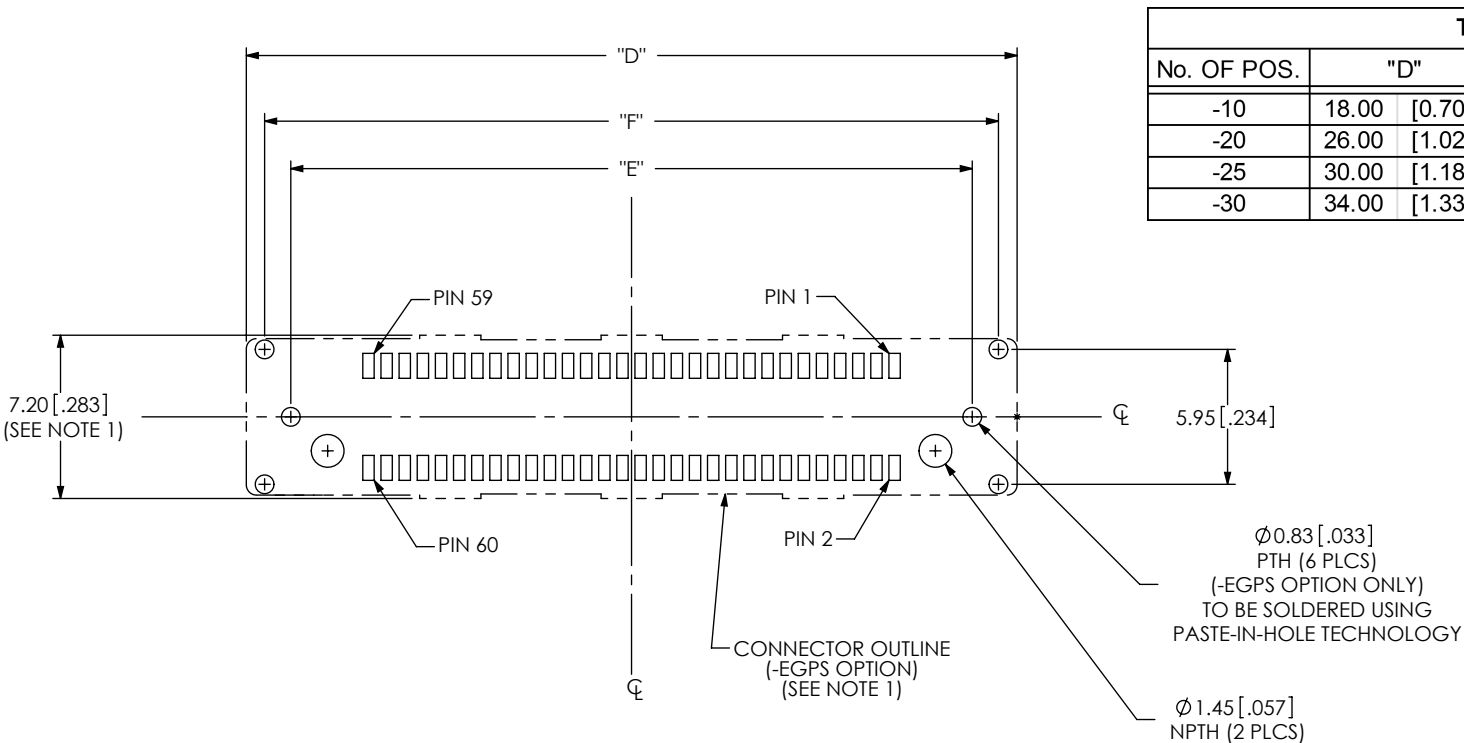
FIG 2
(-030 POSITION SHOWN)
(ALL DIMENSIONS ARE SYMMETRIC ABOUT THE CENTERLINE)

PROPRIETARY NOTE

THIS DOCUMENT CONTAINS INFORMATION
CONFIDENTIAL AND PROPRIETARY TO
SAMTEC, INC. AND SHALL NOT BE REPRODUCED
OR TRANSFERRED TO OTHER DOCUMENTS OR
DISCLOSED TO OTHERS OR USED FOR ANY
PURPOSE OTHER THAN THAT WHICH IT WAS
OBTAINED WITHOUT THE EXPRESSED WRITTEN
CONSENT OF SAMTEC, INC.



520 PARK EAST BLVD, NEW ALBANY, IN 47150
PHONE: 812-944-6733 FAX: 812-948-5047
e-Mail: info@SAMTEC.com code: 55322



| No. OF POS. | "D" | | "E" | | "F" | |
|-------------|-------|---------|-------|---------|-------|---------|
| -10 | 18.00 | [0.709] | 14.00 | [0.551] | 16.36 | [0.644] |
| -20 | 26.00 | [1.024] | 22.00 | [0.866] | 24.36 | [0.959] |
| -25 | 30.00 | [1.181] | 26.00 | [1.024] | 28.36 | [1.117] |
| -30 | 34.00 | [1.339] | 30.00 | [1.181] | 32.36 | [1.274] |

FIG 3
 -EGPS OPTION
 (-030 POSITION SHOWN)
 (SAME AS FIG1, EXCEPT AS SHOWN)
 (ALL DIMENSIONS ARE SYMMETRIC ABOUT THE CENTERLINE)

PROPRIETARY NOTE
 THIS DOCUMENT CONTAINS INFORMATION
 CONFIDENTIAL AND PROPRIETARY TO
 SAMTEC, INC. AND SHALL NOT BE REPRODUCED
 OR TRANSFERRED TO OTHER DOCUMENTS OR
 DISCLOSED TO OTHERS OR USED FOR ANY
 PURPOSE OTHER THAN THAT WHICH IT WAS
 OBTAINED WITHOUT THE EXPRESSED WRITTEN
 CONSENT OF SAMTEC, INC.



520 PARK EAST BLVD, NEW ALBANY, IN 47150
 PHONE: 812-944-6733 FAX: 812-948-5047
 e-Mail: info@SAMTEC.com code: 55322

NOTE:
STENCIL TO BE 0.15[.006] THICK.

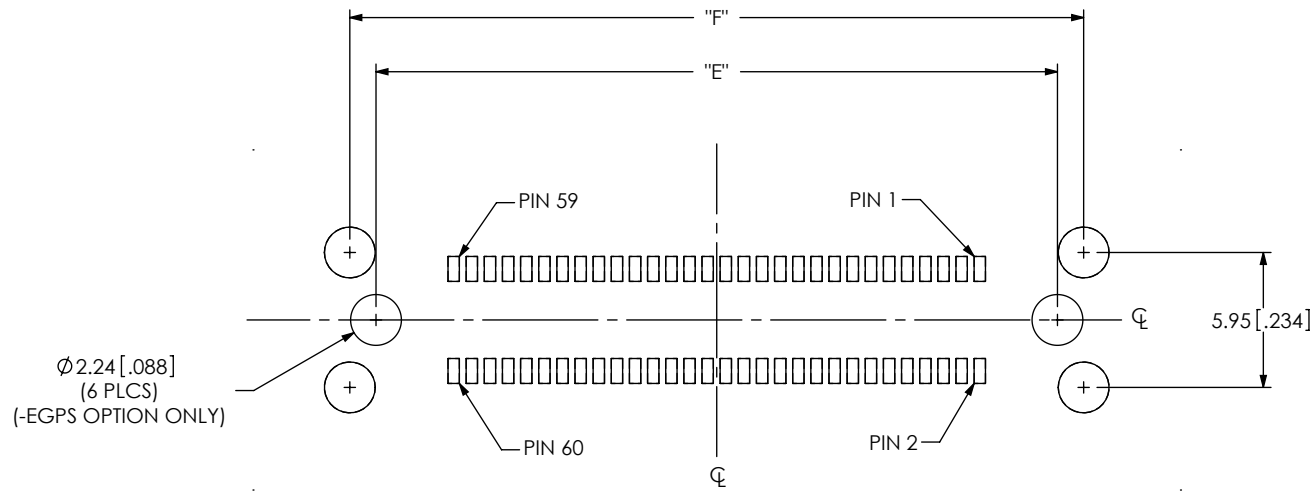


FIG 4
-EGPS OPTION
(-030 POSITION SHOWN)
(SAME AS FIG 2, EXCEPT AS SHOWN)
(ALL DIMENSIONS ARE SYMMETRIC ABOUT THE CENTERLINE)

PROPRIETARY NOTE

THIS DOCUMENT CONTAINS INFORMATION
CONFIDENTIAL AND PROPRIETARY TO
SAMTEC, INC. AND SHALL NOT BE REPRODUCED
OR TRANSFERRED TO OTHER DOCUMENTS OR
DISCLOSED TO OTHERS OR USED FOR ANY
PURPOSE OTHER THAN THAT WHICH IT WAS
OBTAINED WITHOUT THE EXPRESSED WRITTEN
CONSENT OF SAMTEC, INC.



520 PARK EAST BLVD, NEW ALBANY, IN 47150
PHONE: 812-944-6733 FAX: 812-948-5047
e-Mail: info@SAMTEC.com code: 55322