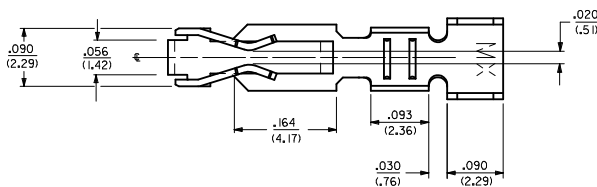
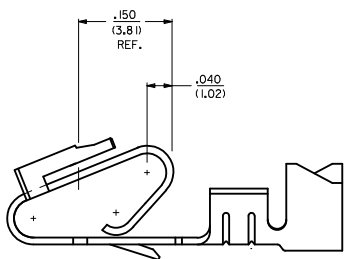


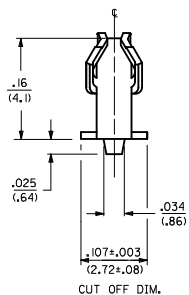
ALTERNATE GEOMETRY  
SEE NOTE 10



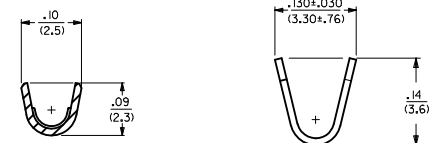
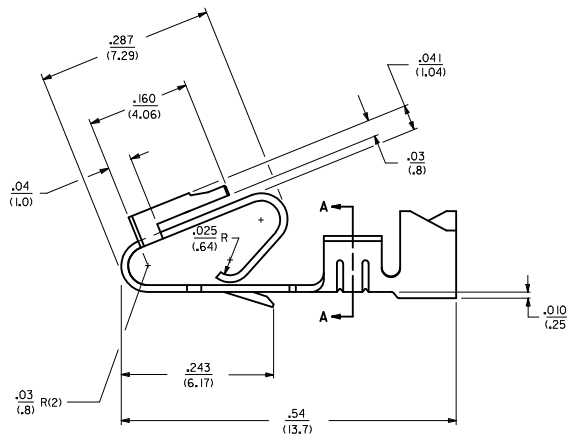
- NOTES:  
 1. MATERIAL: SEE LEGEND  
 2. FINISH:  
 909 - OVERALL HOT TIN DIP: .000100/(0.00254) MIN.  
 154 - OVERALL TIN: .000100/(0.00254) MIN. OVER .000050/(0.00127) MIN. NICKEL.  
 555 - SELECT HARD GOLD: .000015/(0.00038) MIN. OVERALL NICKEL: .000030/(0.00076) MIN.  
 558 - SELECT HARD GOLD: .000030/(0.00076) MIN. OVERALL NICKEL: .000050/(0.00127) MIN.  
 OVERALL HARD GOLD FLASH: .000002/(0.00005) MIN.  
 561 - SELECT HARD GOLD: .000030/(0.00076) MIN. OVERALL NICKEL: .000050/(0.00127) MIN.  
 3. PRODUCT SPECIFICATION: PS-40-02  
 4. PACKAGING SPECIFICATION: CHAIN FORM: SEE PK-6838-001  
 LOOSE FORM: SEE PK-2759-001  
 5. TERMINAL FOR USE IN HOUSING SERIES 6442 AND 41695.  
 6. SEE 7258 SERIES FOR THIS PART WITH CRIMP FOR 22-26 AWG. WIRE.  
 7. CRIMP FOR 18 TO 20 GA. WIRE WITH MAX. INSULATION DIA. OF .100/(2.79).  
 STRIP LENGTH OF .125/100 / (3.18/2.54)  
 8. DIMENSIONS GIVEN ACROSS CENTERLINES ARE SYMMETRICAL ABOUT THOSE CENTERLINES WITHIN HALF THE TOTAL TOLERANCE.  
 9. THIS PART CONFORMS TO CLASS B REQUIREMENTS OF COSMETIC SPECIFICATION PS-45499-002.  
 10. ALTERNATE GEOMETRY PRESENT ON SOME PART NUMBERS. SEE SHEET 2.



SELECTIVE PLATING LOCATION



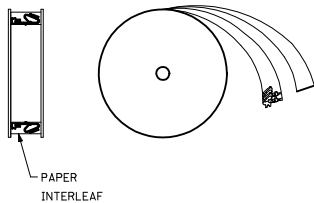
CUT OFF DIM.



SECTION A-A

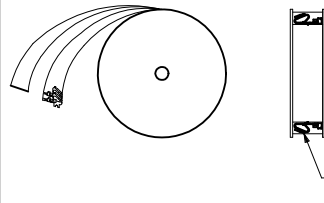
- LEGEND: 6838- ( )
- WINDING
    - A= PER DETAIL A
    - BLANK= PER DETAIL B
  - FORM
    - BLANK= CHAIN
    - L= LOOSE
  - PLATING
    - SEE NOTE 2
- MATERIAL:  
 (.271/.0106 THK  
 BLANK=BRASS  
 A=PHOS BRONZE

WINDING DETAIL 'A'



PAPER INTERLEAF

WINDING DETAIL 'B'



PAPER INTERLEAF

102 TO 154 PLTIG. IEC NO. UCF2012-1821 DRAWN BY: DRW/MK/STROH 2012/01/04 CHECKED BY: CHY/DK/KIPPER 2012/01/05 APPROVED BY: APPR/FJ/SMITH 2012/02/02 AR	QUALITY SYMBOLS	GENERAL TOLERANCES (UNLESS SPECIFIED)	DIMENSION STYLE	SCALE	DESIGN UNITS	THIRD ANGLE PROJECTION	
	∇=0 ∇=0 ∇=0	mm INCH 4 PLACES ± --- ± --- 3 PLACES ± .25 ± .015 2 PLACES ± 0.36 ± --- 1 PLACE ± 0.36 ± --- ANGULAR ±1/2°	IN/MM DRAWN BY: GUZIK DATE: 11/15/89 CHECKED BY: PATEL DATE: 11/15/89 APPROVED BY: LENZ DATE: 11/15/89	---	---	INCH	Molex MOLEX INCORPORATED
	DRAFT WHERE APPLICABLE MUST REMAIN WITHIN DIMENSIONS	MATERIAL NO. SEE CHART SIZE D THIS DRAWING CONTAINS INFORMATION THAT IS PROPRIETARY TO MOLEX INCORPORATED AND SHOULD NOT BE USED WITHOUT WRITTEN PERMISSION	DOCUMENT NO. SD-6838	SHEET NO. 1 OF 2			

20 19 18 17 16 15 14 13 12 11 10 9 8 7 6 5 4 3 2 1

6838-(\*)\*\*

PART NO.	ENG. NO.	
08-50-0187	6838-(P909)	SEE NOTE 1
08-50-0189	6838-(P909)L	SEE NOTE 1
08-50-0275	6838-(P909)-A	

6838-A(\*)\*\*

PART NO.	ENG. NO.	
08-58-0187	6838-A(P558)	
08-58-0189	6838-A(P558)L	
08-52-0112	6838-A(P909)	SEE NOTE 1
08-52-0113	6838-A(P909)L	SEE NOTE 1
08-50-0024	6838-A(154)	
08-50-0251	6838-A(154)L	
08-58-0105	6838-A(P555)	
08-58-0106	6838-A(P555)L	
08-58-0110	6838-A(P56 I)	SEE NOTE 1
08-58-0111	6838-A(P56 I)L	SEE NOTE 1
08-58-0118	6838-A(56 I)	
08-58-0119	6838-A(56 I)L	

NOTES:

1. PART MANUFACTURED WITH ALTERNATE GEOMETRY. SEE SHEET 1.

SEE SHEET 1 IEC NO: UCF2012-1821 DRAWN BY: DRWINMSTROH 2012/01/04 CHECKED BY: CHYKCHKIPFER 2012/01/05 APPROVED BY: APPR:FSMTH 2012/02/02	QUALITY SYMBOLS	GENERAL TOLERANCES (UNLESS SPECIFIED)	DIMENSION STYLE	SCALE	DESIGN UNITS	THIRD ANGLE PROJECTION
	▽=0	4 PLACES ± mm ± INCH	IN/MM	---	INCH	☉
	▽=0	3 PLACES ± mm ± INCH				
	▽=0	2 PLACES ± mm ± INCH				
		1 PLACE ± mm ± INCH				
		ANGULAR ±1/2°				
		DRAFT WHERE APPLICABLE MUST REMAIN WITHIN DIMENSIONS				
			DRAWN BY DATE	CHECKED BY DATE	TITLE	
			GUZIK 11/15/89	PATEL 11/15/89	TRIFURCON TERMINAL CRIMP TYPE, .156 CENTERS 18 TO 20 AWG WIRE	
			APPROVED BY DATE	MATERIAL NO.		
			LENZ 11/15/89	SEE CHART		
				DOCUMENT NO.		
				SD-6838		
				SHEET NO.		
				2 OF 2		
			THIS DRAWING CONTAINS INFORMATION THAT IS PROPRIETARY TO MOLEX INCORPORATED AND SHOULD NOT BE USED WITHOUT WRITTEN PERMISSION			

19 18 17 16 15 14 13 12 11 10 9 8 7 6 5 4 3 2 1