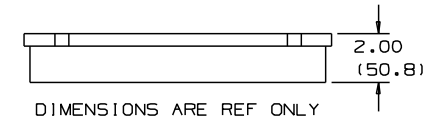
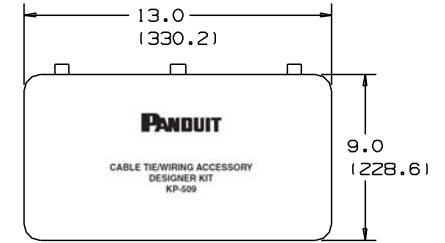
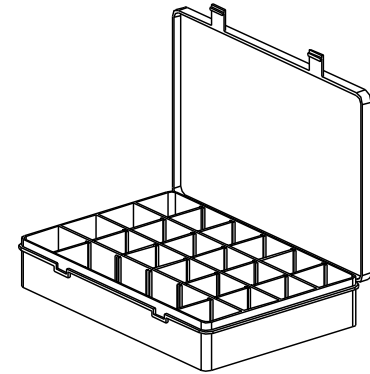


THIS COPY IS PROVIDED ON A RESTRICTED BASIS AND IS NOT TO BE USED IN ANY WAY DETRIMENTAL TO THE INTERESTS OF PANDUIT CORP.

1 ADCC31-AT-C10 (4) AMC25-AT-10 (2)	2 VWS4218 (4) VWS4238 (4) VWS4274 (4) VWS42105 (4) HWS2819 (4)	3 LWC25-A-14 (2) LWC25-H25-14 (1) LWC38-A-14 (2) LWC38-H25-14 (1) LWC50-A-14 (2) LWC50-H25-14 (1)	4 HCMPO6B12-20 (2) HCMPO6C12-20 (2) HCMEO6A12-130 (2)	5 BEC38-A (1) BEC75-A (1) BECP38H25 (1) BECP75H25 (1)	6 FCC-A-8 (2) FCC5-A-8 (2) FCM1-A-14 (1) LC10-A-LB (1) LC3-A-8 (1) LC5-A-8 (1)
7 TM156 (4) TM258 (4) TM3525 (4) TMEH-S25-0 (2) TMTSHS13-0 (1)	8 ABMM-A (8) ABM1M-A (12) ABM25-A (8)	9 ABM100-A (8) ABM3H-A (2) ABM4H-A (2)	10 ABM112-A (8) SMS-A (1)	11 CROS (4) CR4H (4) CSCS (4) TA158 (4) TA2 (4)	12 S1CH25 (4) S1CH38 (4) S1CH150 (2) WS25-25 (4) WS35-50 (4) WS50-50 (4) WS75-75 (4)
13 CCS12-S8 (2) CCS25-S8-0 (2) CCS38-S8-0 (2) CCS50-S8-0 (2) CCH25-S10 (2) CCH50-S10 (2) CCH75-S10 (2) CCH100-S10 (1) CCH112-S10-0 (1) TWR (4)	14 ARC.68-A-14 (1) VCC25-A (4)	15 ACC19-A (2) ACC38-A (2) ACC62-A (2) PMCC38H25 (2)	16 AJC19-A (2) AJC25-A (2) AJC31-A (2) AJC38-A (2) A1C50-A-B (2) A2C50-A-C8 (2)	17 PBMS-H25 (4) PM2H25 (4) PWMS-H25 (4) TM2PWH25 (4) MPMS19-0 (4) MPMS25-0 (4)	18 LPMM-S2 (4) LPMS-S8 (4) KIMS-H430-6 (4) KIMS-H366-2 (4) KIMS-H500-4 (4)
19 MCMS12-P (2) MCMS25-P (2) MCMS30-P (2) CPM122S (2) CPMB7S (2)	20 PLT.7M-M (6) PLT1.51-C (6) PLT1M-C (6) PLT25-C (6) PRT2S-M6 (2) PLC1M-S4-C (2) PLF1M-M4Y (2) PLWP1M-C (2) ABM05-A-C (2)	21 LPFCM14-A-14 (2) LPFCM22-A-14 (2) GEE36F (6") GES2 (8") GES62 (6")	22 T25N (1) T50F (1) T50F-3Y (1) PP15-S12 (2) MP150 (2) MTP25-E10 (2) CLT25F 6 IN (1)	23 PLA25-A-0 (1) PRA25-A-0 (1) FCM-A-14 (1) FCH2-A-14 (1)	24 CBL525 (4) CBL550 (4) CBL575 (4) CBP50 (4) CBP87 (4)



DIMENSIONS ARE REF ONLY

NOTE:
1. FORMAT IS AS FOLLOWS:
PRODUCT PART NUMBER (QUANTITY)

DIMENSIONS IN BRACKETS ARE METRIC [mm]

						TITLE KP-509 KIT			
						CUSTOMER DRAWING			
						ITEM REVISION NAME 10B015KX/00			
						DATASET FILE NAME 10B015KX_DC/00-GB0239EG_REV09			
						UNLESS OTHERWISE SPECIFIED, DIMENSIONAL TOLERANCES ARE: 1N [mm]			
						.x ± 0.05 [1.3]		.xxx ± 0.010 [0.25]	
						.xx ± 0.02 [0.5]		ANGLES: 5°	
-- --- -- -- -- SEE ECN FOR COMPLETE DETAILS.								MATERIAL: POLYPROPYLENE	
09 11/08/13 BWG MPH RTFI UPDATED ARTWORK ON LID IN TOP VIEW. AND TITLE BORDER.						GB0239EG/09		DRAWING NUMBER: GB0239EG	
REV DATE BY CHK APR DESCRIPTION ECN						DRAWN BY DATE		SCALE	
						JAD 6/2/00		NONE	
						CHK		SCALE	
								SHT 1 OF 1	
								SIZE A	

D10.100DAY/16