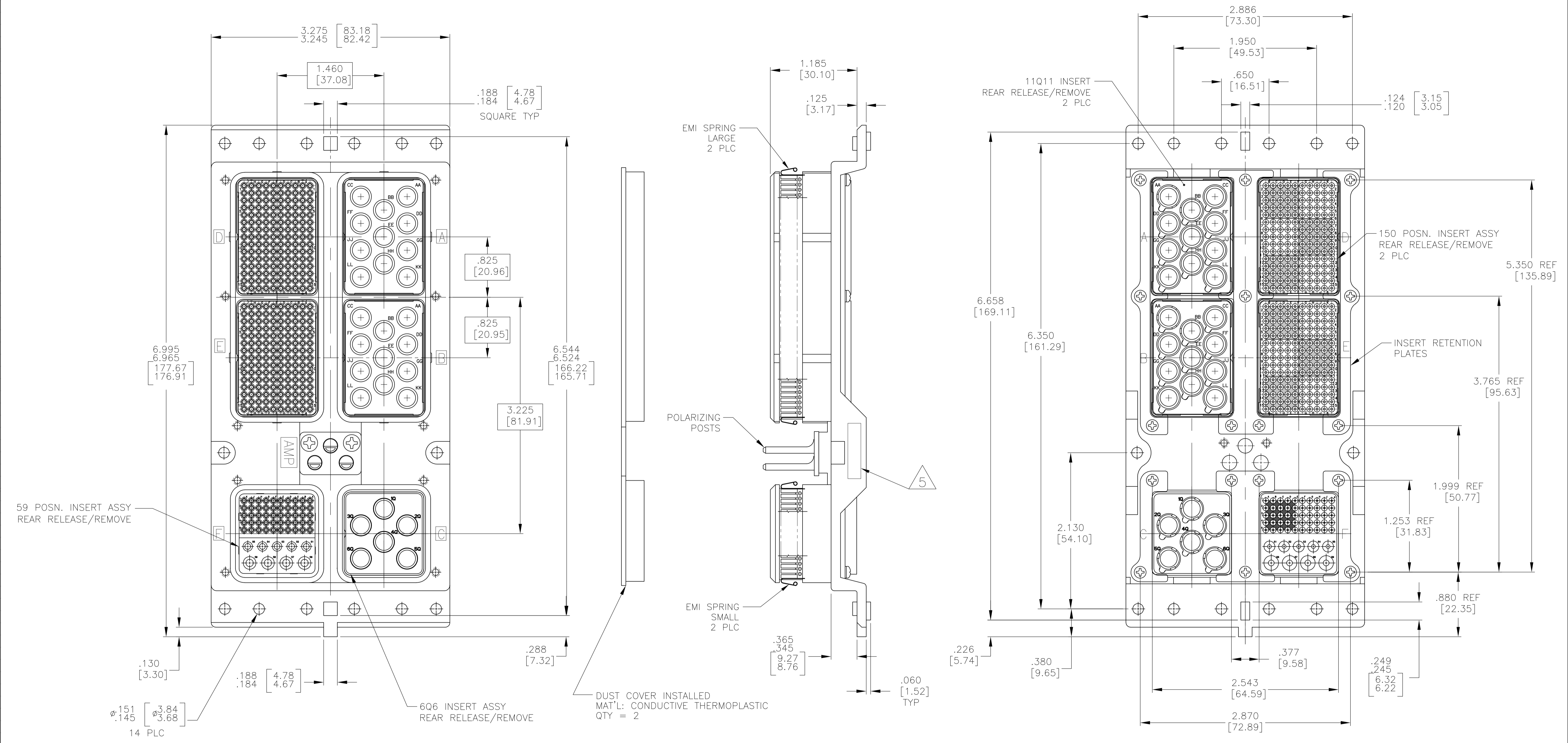


REVISIONS					
P	LTR	DESCRIPTION	DATE	DMN	APVD
G	REV PER	ECO-16-007411	01JUN16	KG	EO



- CONNECTOR DIMENSIONS ARE PER ARINC 600 SPECIFICATION
  - DUST COVER INSTALLED FOR SHIPPING. QTY = 2
  - KEYING INSTALLED IN POSITION "130" PER TABLE. FOR POSITION "00" KEYING SHIPPED UNASSEMBLED.
  - CONTACTS INCLUDED WITH ASSEMBLY BUT NOT INSTALLED:  
 SIZE 22 CRIMP PIN CONTACT; TE PART NO. 208262-3; QTY=350  
 SIZE 16 CRIMP SOCKET CONTACT; TE PART NO. 208270-2; QTY=5  
 SIZE 12 CRIMP SOCKET CONTACT; TE PART NO. 208273-2; QTY=4
- 5 MARK: 442-1915-002, REV E, 2221425-1, REV H, AND DATE CODE.

COMPONENT	MATERIAL	FINISH
SHELL	DIE CAST ALUMINUM PER ASTM-B-85	ELECTROLESS NICKEL PER MIL-C-26074, CLASS 4, GRADE B
INSERT RETENTION PLATES	ALUMINUM ALLOY PER ASTM-B-209	ELECTROLESS NICKEL PER MIL-C-26074, CLASS 4, GRADE B
SCREWS AND LOCKWASHERS	STEEL OR STAINLESS STEEL	CHROMATE OVER ZINC OR PASSIVATED
POLARIZING POSTS	ZINC ALLOY PER ASTM-B-86	ELECTROLESS NICKEL PER MIL-C-26074, CLASS 4, GRADE B
POLARIZING POST RETAINING PLATE	ALUMINUM ALLOY PER ASTM-B-209	BLUE ANODIZED PER MIL-A-8625
150 & 59 INSERTS	THERMOSET	-
606 & 11Q11 INSERT	ALUMINUM ALLOY PER ASTM-B-209	ELECTROLESS NICKEL PER MIL-C-26074, CLASS 4, GRADE B

"130"	2221425-1
KEYING POSITION	PART NO.

THIS DRAWING IS A CONTROLLED DOCUMENT.

DMN: C.C.THOMAS 9-5-12  
 CHK: K.HOGAN 9-5-12  
 APVD: K.HOGAN 9-5-12

NAME: PLUG ASSY, SIZE 3, ARINC 600 (11Q11/11Q11/606/150/150/59)

APPLICATION SPEC: -

SIZE: A1  
 CASE CODE: 00779  
 DRAWING NO: 2221425

WEIGHT: 0.000000  
 CUSTOMER DRAWING

RESTRICTED TO: -

SCALE: 1:1  
 SHEET: 1 OF 1  
 REV: G