

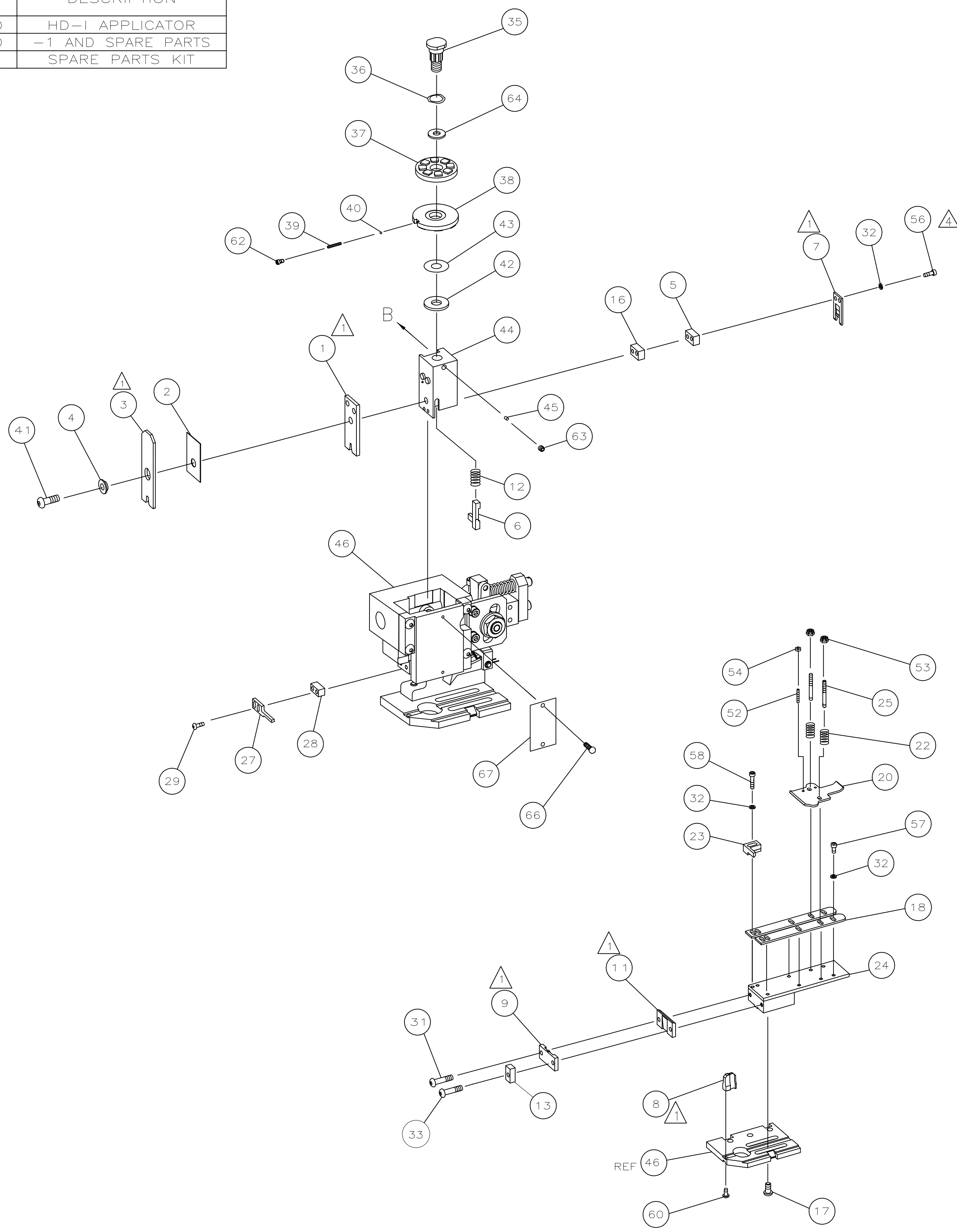
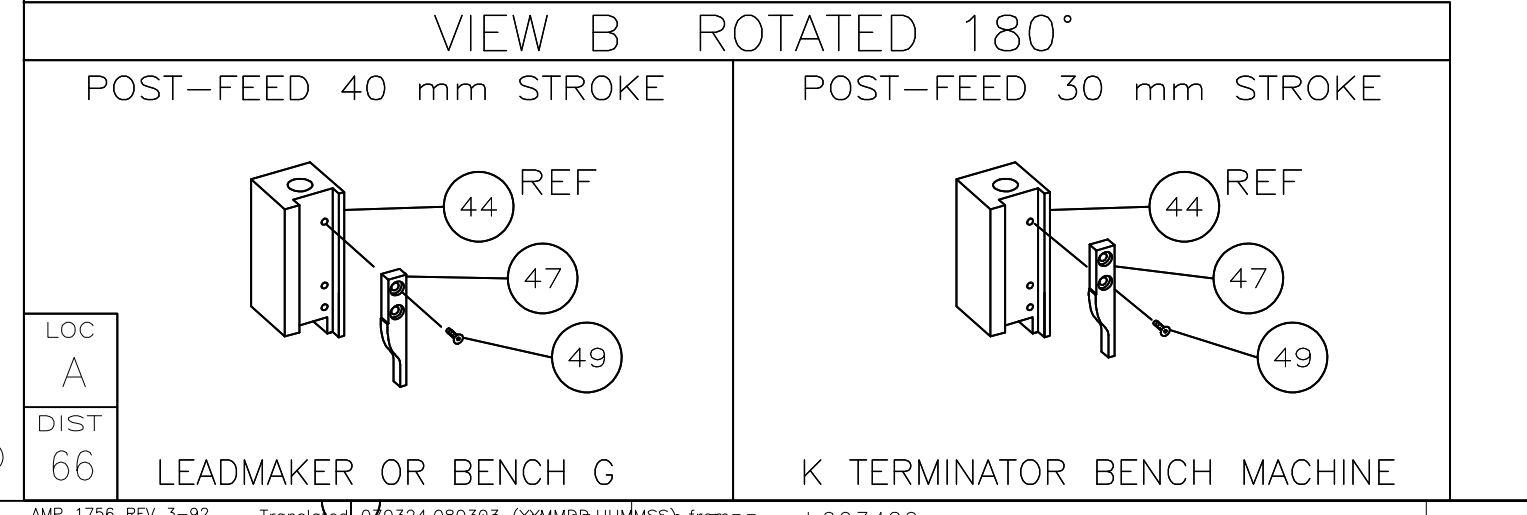
PART NUMBER	REV	FIRST USED	TERMINATOR	FEED TYPE	DESCRIPTION
1339760-1	A	-	BENCH & LEADMAKER	MECH POST FEED	HD-I APPLICATOR
7-1339760-1	A	-	BENCH & LEADMAKER	MECH POST FEED	-1 AND SPARE PARTS
7-1339760-7	A	-	-	-	SPARE PARTS KIT

CRIMP DATA AMP TERMINAL			AMP CRIMP SPECS		
TERMINAL NAME: FASTON RECEPTACLE					
CRIMP	SIZE	TYPE	RANGE		
WIRE	3.56 [.140 IN]	F	2.00-6.00mm ² ^S		
INSUL	5.33 [.210 IN]	F	4.06-5.33 [.160-.210 IN]		
WIRE STRIP LENGTH		APPL INSTRUCTION			
5.80-6.60 [.228-.260 IN]		408-8323			
TERMINAL APPL SPEC		-	FEED		28.19 [1.110 IN]

TERMINALS APPLIED				
150530	-	-	-	-
-	-	-	-	-
-	-	-	-	-
-	-	-	-	-
-	-	-	-	-
-	-	-	-	-
-	-	-	-	-
-	-	-	-	-
-	-	-	-	-
-	-	-	-	-

WIRE SIZE mm ² AWG	CRIMP HEIGHT	PIN PN AND LENGTH [IN]
10 AWG	3.00 ±0.05 [.118 ±.002 IN]	1-354778-7 [.2580]
4.60mm ²	2.87 ±0.05 [.113 ±.002 IN]	2-354778-7 [.2630]
4.00mm ²	2.72 ±0.05 [.107 ±.002 IN]	4-354778-0 [.2695]
14 AWG + 16 AWG	2.59 ±0.05 [.102 ±.002 IN]	5-354778-1 [.2750]
12 AWG or 3.00mm ²	2.54 ±0.05 [.100 ±.002 IN]	5-354778-5 [.2770]
2.50mm ²	2.39 ±0.05 [.094 ±.002 IN]	6-354778-7 [.2830]
14 AWG	2.36 ±0.05 [.093 ±.002 IN]	6-354778-9 [.2840]
-	-	-
-	-	-
-	-	-
-	-	-
-	-	-

- ^S RECOMMENDED SPARE PARTS.
² GREASE RAM, CAM, CAM FOLLOWER AND FEED ROD LIGHTLY.
³ LUBRICATE DAILY PER THE APPLICATOR INSTRUCTION SHEET SUPPLIED WITH THE APPLICATOR.
⁴ CUT TO LENGTH AT ASSY.
^S RANGE QUOTED IS THAT OF THE TERMINAL, NOT THE APPLICATOR.



QTY	REQD	PER ASSY	PART NO	DESCRIPTION	ITEM NO
-	1	1	1339760	PRINT, APPLICATOR LOG SHEET	73
-	1	1	1338705-2	DOCUMENTATION PACKAGE	72
-	-	-	-	-	71
-	-	-	-	-	70
-	-	-	-	-	69
-	-	-	-	-	68
-	1	1	461264-1	PLATE, IDENTIFICATION	67
-	2	2	21017-2	SCR,DRIVE(#2X.19)ID PLATE	66
-	-	-	-	-	65
-	1	1	986950-1	WASHER, FLAT PRECISION	64
-	1	1	3-18031-0	SCR,SKT SET(M6X6)RAM	63
-	1	1	18023-9	SCR,SKT CAP(M4X6)CP DSC	62
-	-	-	-	-	61
-	1	1	18024-7	SCR,BHC(M4X10)ANVIL	60
-	-	-	-	-	59
-	2	2	1-18023-3	SCR,SHC(M4X16)HOLD DOWN	58
-	5	5	1-18023-0	SCR,SHC(M4X8)STRIP GUIDE	57
-	2	2	1-18023-4	SCR,SHC(M4X20)SLUG BLADE	56
-	-	-	-	-	55
-	2	2	18029-1	NUT,HEX(M3)DRAG	54
-	2	2	986965-1	NUT,HEX SL(M4)DRAG STUD	53
-	2	2	2-18032-2	SCR,SKT SET(M3X10)DRAG	52
-	-	-	-	-	51
-	-	-	-	-	50
-	1	1	18024-3	SCR,BHC(M3X10)CAM	49
-	-	-	-	-	48
-	1	1	1338676-1	CAM, POST-FEED 30 & 40 mm ST	47
-	1	1	1338662-2	APPLICATOR, BASIC (SUBASSY)	46
-	1	1	690191-1	PLUG, NYLON	45
-	1	1	1320998-1	RAM	44
-	1	1	690125-1	WASHER, LAMINATED	43
-	1	1	1-690124-3	WASHER, RAM	42
-	1	1	2-18024-6	SCREW,BHC(M8X25)CRIMPER	41
-	1	1	23241-1	BALL, STEEL	40
-	1	1	2-22278-7	SPRING, COMPRESSION	39
-	1	1	1320922-1	DISC, INSULATION	38
-	1	1	354777-1	WIRE DISC, PLASTIC	37
-	1	1	22480-5	WASHER, SPRING	36
-	1	1	690212-1	POST, RAM	35
-	-	-	-	-	34
-	1	1	4-18024-7	SCR,BHC(M4X25)SHEAR PL	33
-	9	9	18025-2	WASHER,LOCK(M4)SHEAR BL	32
-	1	1	1-18024-0	SCR,BHC(M4X20)SHEAR PL	31
-	-	-	-	-	30
-	2	2	18024-8	SCR,BHC(M4X12)STRIPPER	29
-	1	1	3-690451-2	SPACER, STRIPPER	28
-	1	1	240639-1	STRIPPER	27
-	-	-	-	-	26
-	2	2	1320906-1	DRAG, STUD	25
-	1	1	1-1320995-6	PLATE, STRIP GUIDE	24
-	1	1	240825-8	PLATE, STRIP HOLD DOWN	23
-	2	2	4-22281-1	SPRING, DRAG	22
-	-	-	-	-	21
-	1	1	1338665-1	DRAG, STOCK	20
-	-	-	-	-	19
-	2	2	1338663-6	GUIDE, LOWER STRIP	18
-	4	4	1-18024-8	SCR,BHC(M6X12)STRIP GD PL	17
-	1	1	1338708-1	SPACER, SLUG BLADE	16
-	-	-	-	-	15
-	-	-	-	-	14
-	1	1	1-690481-0	SPACER, HOLD DOWN	13
-	1	1	23846-1	SPRING, HOLD DOWN	12
-	1	1	240833-3	PLATE, REAR SHEAR	11
-	-	-	-	-	10
-	1	1	1-690482-8	PLATE, FRONT SHEAR	9
-	1	2	1-1333222-0	ANVIL	8
-	1	1	690474-5	BLADE, SLUG	7
-	1	1	2-455892-4	HOLD DOWN, TERMINAL	6
-	1	1	5-240641-5	SPACER, SLUG BLADE	5
-	1	1	238009-1	SPACER, BLOCK CRIMPER	4
-	1	2	6-683453-8	CRIMPER, INSULATION	3
-	1	1	1-455888-9	SPACER, CRIMPER	2
-	1	2	456411-2	CRIMPER, WIRE	1

PART NO			DESCRIPTION			ITEM NO
-77	-71	-1	REVISION OF EACH ASSY NO (WHEN BLANK, USE DWG REVISION)			-
QTY REQD PER ASSY			PARTS LIST			
-			MATL	HT TR	FIN	
-			-	-	-	

REV	DATE	APP	DESCRIPTION
A1	ECR-11-000733	CC	JAN12

DIMENSIONS: mm [INCHES]
 DO NOT SCALE PRINT.
 TOLERANCES UNLESS OTHERWISE SPECIFIED:
 1 PLC DEC ±
 2 PLC DEC ±
 3 PLC DEC ±
 ANGLES ±
 SURF TEXTURE: ✓
 REMOVE BURRS, BREAK SHARP EDGES RO.38 MAX

DR	CHK	REL	APP	APP	NAME	MACHINE REF
M.CLIFFORD	30NOV04	F.BACKHURST	30NOV04	M.CLIFFORD	END FEED HD-I APPLICATOR	HD-I APPL
SCALE: D						DWG NO: 1339760
SHEET 1 OF 1						REV A1

THIS DRAWING IS A CONTROLLED DOCUMENT.

LAYOUT L1339760

SET UP GAGE 458638-3

20

RELEASER FOR PUBLICATION BY AMP INCORPORATED. ALL RIGHTS RESERVED.

THIS DRAWING IS UNPUBLISHED. COPYRIGHT © 2009 AMP, INC. ALL RIGHTS RESERVED.