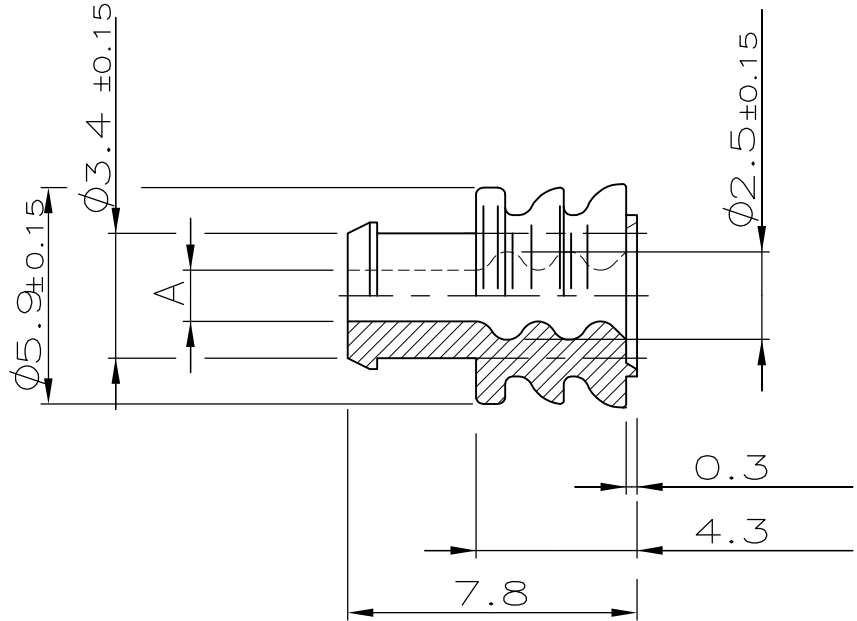
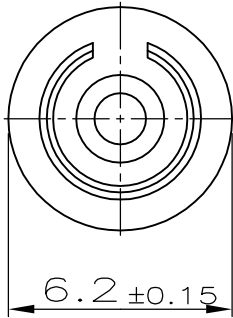


MATED WITH: -	LOC A	DIST -	REVISIONS					
			P	LTR	DESCRIPTION	DATE	DWN	APVD
PROJECT NR.: 87-9187			K11	REVISED PER ECR-12-002298		06FEB2012	Mah	Abele

<del>828921-3</del>	<del>1.9±0.15</del>	OBSOLETE
<del>828921-2</del>	<del>1.5±0.15</del>	OBSOLETE
828921-1	1.5±0.15	
PN	Maß A	



Bemerkungen  
NOTES

- Einzelheiten der Ausfuehrung bleiben dem Hersteller ueberlassen  
DETAILS OF DESIGN ARE LEFT TO MANUFACTURER
- Passend fuer Drahtgroessenbereich > 1 - 2.5mm<sup>2</sup>  
SUITABLE FOR WIRE SIZE RANGE:
- Passend fuer Isolationsdurchmesser:  
SUITABLE FOR INSULATION DIAMETER: 2.1 - 3.0
- Bestueckungshilfe fuer Einzelleiterabdichtung siehe: TE CONNECTIVITY: 965702  
INSERTER FOR SINGLE WIRE SEAL SEE :
- Keine Luftloecher zulaessig  
NO AIR BUBBLES PERMITTED

1 : 1



nur für Handzangen-  
verarbeitung / oelfrei  
FOR HAND TOOL PROCESS ONLY  
OILFREE

THIS DRAWING IS UNPUBLISHED. ALL RIGHTS RESERVED. © COPYRIGHT - By -

DIMENSIONS: mm	DWN P. Gaupp 17 APR 97	MATERIAL -	FINISH -
	CHK D. Kümpel 21 APR 97	TE Connectivity	
TOLERANCES UNLESS OTHERWISE SPECIFIED: p. ISO 22929 p. DIN 16901 - 160	APVD -		
0 PLC ± - 1 PLC ± - 2 PLC ± - 3 PLC ± - 4 PLC ± - ANGLES ± -	PRODUCT SPEC 108-18263-1	SIZE A4	CAGE CODE 00779
	APPLICATION SPEC 114-18031	DRAWING NO C-828921	RESTRICTED TO -
	WEIGHT -	CUSTOMER DRAWING	
		SCALE 5:1	SHEET 1 OF 1
			REV K11