

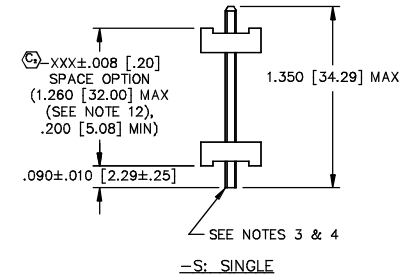
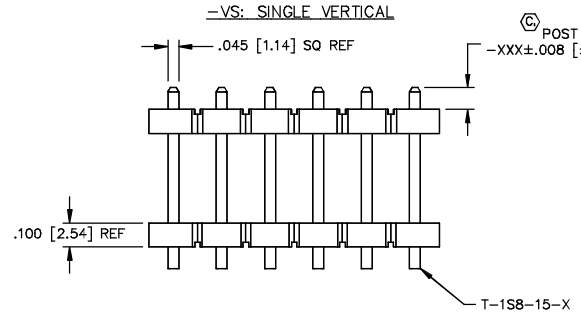
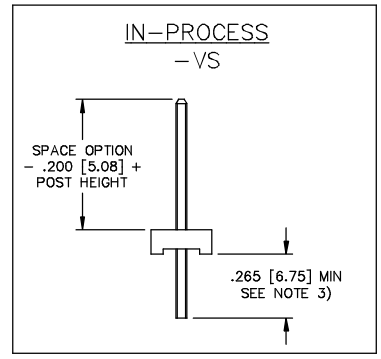
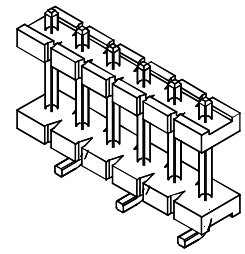
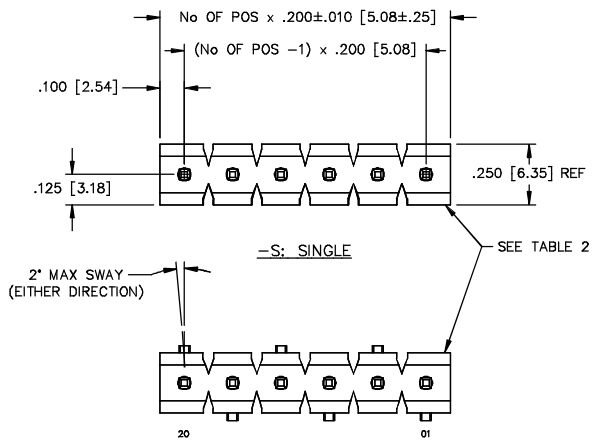
REVISION P  
DO NOT SCALE FROM THIS PRINT

TABLE 1 (SEE NOTE 7)		
SPACE OPTION + POST HEIGHT	PACKAGING TUBE	PLUG
.300 TO .725 [7.62 TO 18.42]	PT-1-24-16-29	TP-07
.726 TO .820 [18.44 TO 20.83]	PT-1-24-01-67	TP-13
.821 TO 1.080 [20.85 TO 27.43]	PT-HPW001-P	TP-26

UNLESS OTHERWISE NOTED  
DIMENSIONS ARE IN INCHES TOLERANCES ARE:  
ONE PLACE DECIMALS ±.1[2.5] THREE PLACE DECIMALS ±.003[.08]  
TWO PLACE DECIMALS ±.01[.25] FOUR PLACE DECIMALS ±.0015[.038]  
ANGLES ± 2°

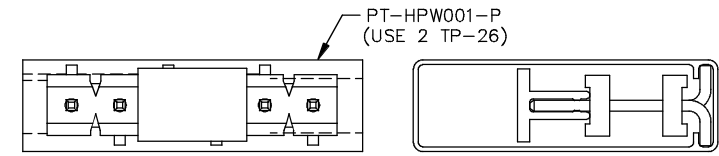
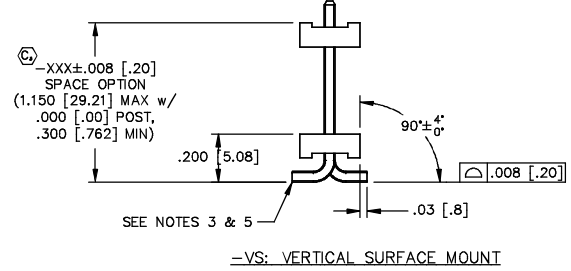
TITLE: .200 HIGH POWER STACKER, ASM  
DWG NO: HPW-XX-XX-XX-X-XXX-XXX-XX-X  
SHEET 1 OF 1

TABLE 2	
FORM	BODY
T/H	FSW-20-200
VS	HFSW-20-200

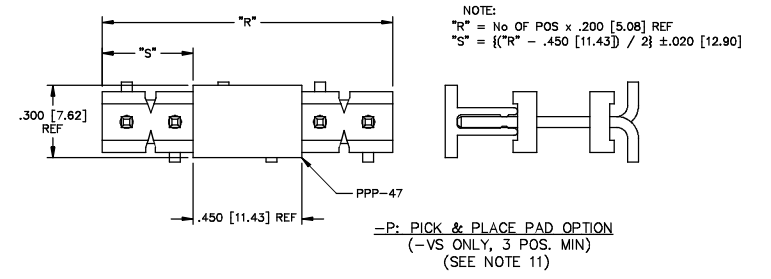


HPW-XX-XX-XX-X-XXX-XXX-XX-X  
No OF POSITIONS -02 THRU -20  
LEAD STYLE  
-04: T-1S8-15-XX  
-05: T-1S8-15-XX  
PLATING SPECIFICATIONS  
-T: TIN (USE T-1S8-15-T)  
-TM: MATTE TIN (USE T-1S8-15-T)  
OPTION  
-P: PICK AND PLACE PAD -VS ONLY, 3 POS MIN;  
-275 MAX POST HEIGHT  
-VS VERTICAL SURFACE MOUNT  
POST HEIGHT  
-XXX: SPECIFY POST HEIGHT .000 MIN (SEE NOTE 3)  
SPACE OPTION  
-XXX: SPECIFY BOARD SPACING  
ROW SPECIFICATION  
-S: SINGLE (SEE TABLE 2)

- NOTES:
- HEIGHT VARIATION BETWEEN ANY TWO PINS SHALL BE .010 MAX.
  - MAXIMUM PIN ROTATION IN BODY: 2°
  - TAIL TO BE SHEARED TO .265 [6.73] MIN. A SECOND SHEAR STEP WILL BE NEEDED AFTER FORMING TO ACHIEVE THE TAIL TO TAIL DIM.
  - MAXIMUM BURR ALLOWED: .004 [0.10]
  - MAXIMUM BURR ALLOWED: .0015 [0.038]
  - THROUGH HOLE (-S) TO BE BULK PACKAGED.
  - SURFACE MOUNT (-VS) TO BE PACKAGED AS FOLLOWS: POSITIONS -04 THRU -20 ARE TO BE PACKAGED IN TUBES; POSITIONS -02 & -03 ARE TO BE LAYERED PACKAGED.
  - MIN PUSHOUT FORCE TO BE 3 LBS.
  - MAX CUT FLASH TO BE .020 [0.51]
  - ⊙ REPRESENTS A CRITICAL DIMENSION.
  - ALL PARTS WITH PICK AND PLACE PAD TO USE PACKAGING TUBE PT-HPW001-P AND TP-26 PLUGS.
  - POST + SPACE OF 1.300 [33.02] - 1.350 [34.29] WILL NOT HAVE SHEARED TAILS.



POSITIONS -04 THRU -20 WITH OR WITHOUT -P OPTION  
PACKAGING VIEW  
SEE TABLE 1 & NOTE 7



MATERIAL:  
BODY: VECTRA E130i  
COLOR: NATURAL UL 94V0  
TERMINAL: CDA7025  
MAX BOW ALLOWED: .002 [0.05] IN/IN  
PLOT SCALE: .375/ DIMSCALE: .300

EXISPROD\ASSEMBLY\200  
HPW-ASM  
**samtec**  
520 PARK EAST BLVD. NEW ALBANY, INDIANA 47151-1147  
PHONE (812) 944-6733 P.O. BOX 1147  
CODE 55322  
MADE BY: BURRES 08-21-98  
HPW-XX-XX-XX-X-XXX-XXX-XX-X  
SHEET 1 OF 1

PROPRIETARY NOTE  
THIS DOCUMENT CONTAINS INFORMATION CONFIDENTIAL AND PROPRIETARY TO SAMTEC INC. AND SHALL NOT BE REPRODUCED OR TRANSMITTED TO OTHER DOCUMENTS OR DISCLOSED TO OTHERS OR USED FOR ANY PURPOSE OTHER THAN THAT FOR WHICH IT WAS OBTAINED WITHOUT THE EXPRESSED WRITTEN CONSENT OF SAMTEC INC.