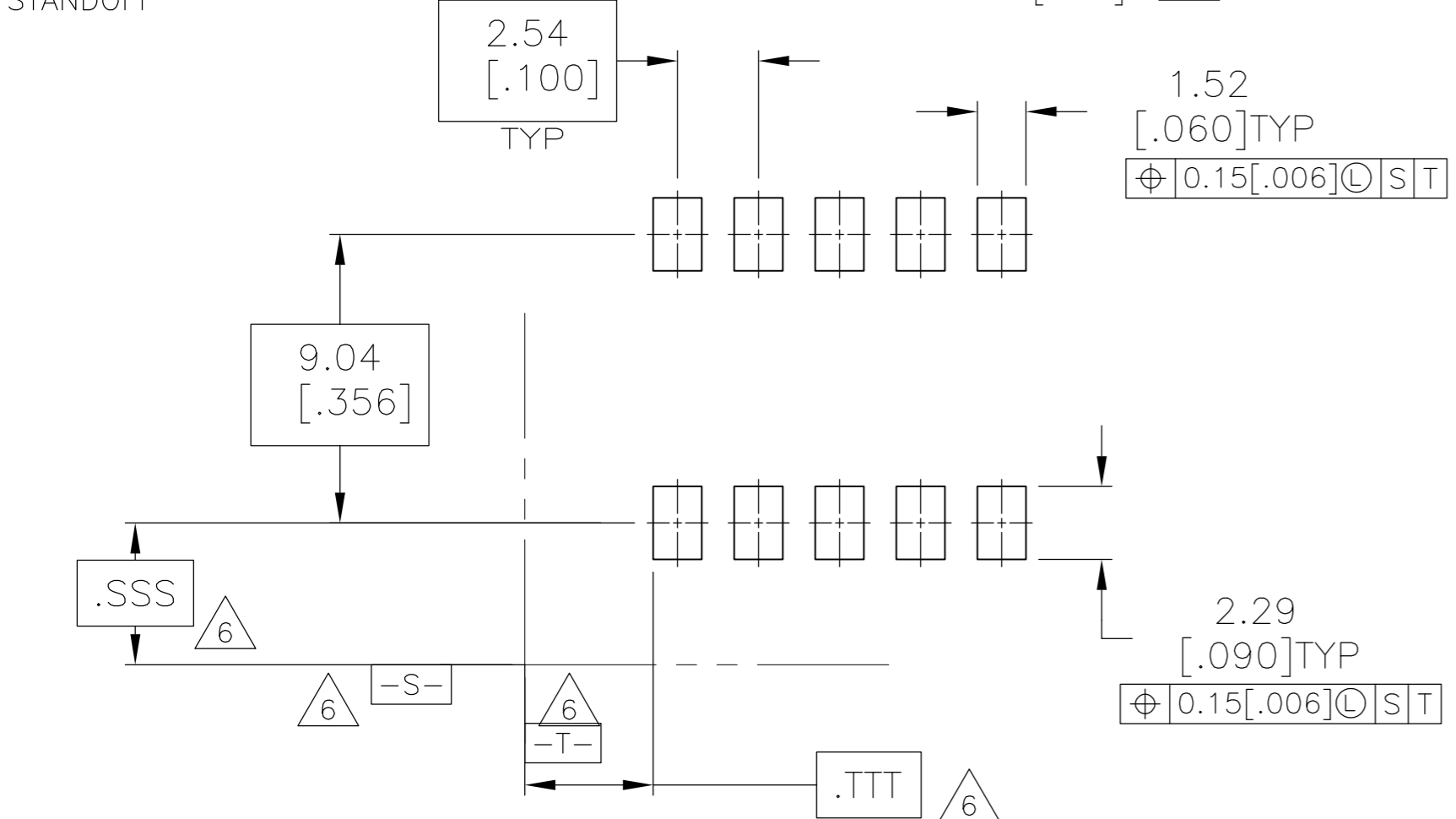
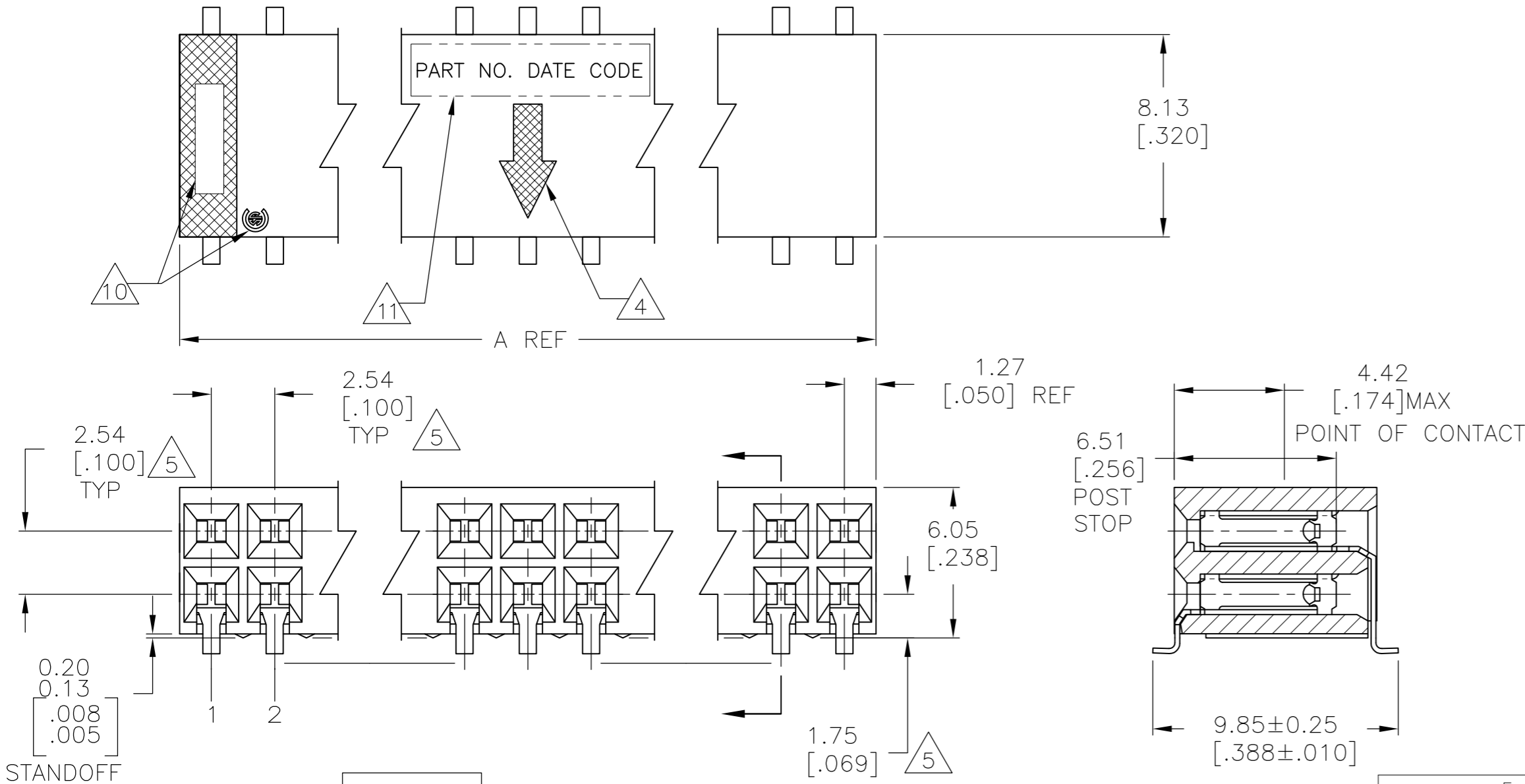


THIS DRAWING IS UNPUBLISHED. RELEASED FOR PUBLICATION
 © COPYRIGHT - By - ALL RIGHTS RESERVED.

LOC		DIST		REVISIONS			
P	LTR	DESCRIPTION	DATE	DWN	APVD		
AD	00	E4	REVISED PER ECO-13-005565	02APR13	KH	JO	

- 8 NO PART NUMBER MARKING REQUIRED FOR THIS PART.
- 10 TE LOGO AND CSA LOGO ARE MOLDED INTO HOUSING, AT LOCATION SHOWN.
- 11 MARK PART NUMBER AND DATE CODE IN APPROXIMATE LOCATION SHOWN, EITHER END.



A	NO OF POSN	PART NUMBER
165.10[6.500]	130	6-147734-4
162.56[6.400]	128	6-147734-3
160.02[6.300]	126	6-147734-2
157.48[6.200]	124	6-147734-1
152.94[6.100]	122	6-147734-0
152.40[6.000]	120	5-147734-9
149.86[5.900]	118	5-147734-8
147.32[5.800]	116	5-147734-7
144.78[5.700]	114	5-147734-6
142.24[5.600]	112	5-147734-5
139.70[5.500]	110	5-147734-4
137.16[5.400]	108	5-147734-3
134.62[5.300]	106	5-147734-2
132.08[5.200]	104	5-147734-1
129.54[5.100]	102	5-147734-0
127.00[5.000]	100	4-147734-9
124.46[4.900]	98	4-147734-8
121.92[4.800]	96	4-147734-7
119.38[4.700]	94	4-147734-6
116.84[4.600]	92	4-147734-5
114.30[4.500]	90	4-147734-4
111.76[4.400]	88	4-147734-3
109.22[4.300]	86	4-147734-2
106.68[4.200]	84	4-147734-1
104.14[4.100]	82	4-147734-0

A	NO OF POSN	PART NUMBER
101.60[4.000]	80	3-147734-9
99.06[3.900]	78	3-147734-8
96.52[3.800]	76	3-147734-7
93.98[3.700]	74	3-147734-6
91.44[3.600]	72	3-147734-5
88.90[3.500]	70	3-147734-4
86.36[3.400]	68	3-147734-3
83.82[3.300]	66	3-147734-2
81.28[3.200]	64	3-147734-1
78.74[3.100]	62	3-147734-0
76.20[3.000]	60	2-147734-9
73.66[2.900]	58	2-147734-8
71.12[2.800]	56	2-147734-7
68.58[2.700]	54	2-147734-6
66.04[2.600]	52	2-147734-5
63.50[2.500]	50	2-147734-4
60.96[2.400]	48	2-147734-3
58.42[2.300]	46	2-147734-2
55.88[2.200]	44	2-147734-1
53.34[2.100]	42	2-147734-0
50.80[2.000]	40	1-147734-9
48.26[1.900]	38	1-147734-8
45.72[1.800]	36	1-147734-7
43.18[1.700]	34	1-147734-6
40.64[1.600]	32	1-147734-5
38.10[1.500]	30	1-147734-4
35.56[1.400]	28	1-147734-3
33.02[1.300]	26	1-147734-2
30.48[1.200]	24	1-147734-1
27.94[1.100]	22	1-147734-0
25.40[1.000]	20	147734-9
22.86[.900]	18	147734-8
20.32[.800]	16	147734-7
17.78[.700]	14	147734-6
15.24[.600]	12	147734-5
12.70[.500]	10	147734-4
10.16[.400]	8	147734-3
7.62[.300]	6	147734-2
5.08[.200]	4	147734-1

- 1 HOUSING: GLASS FILLED POLYESTER, PCT, COLOR: BLACK
- 2 CONTACT: PHOSPHOR BRONZE
- 3 CONTACT: DUPLEX PLATING 0.00025[.000010] GOLD IN CONTACT AREA, 0.00381-0.00762[.000150-.000300] TIN-LEAD ON SOLDER LEADS ALL OVER 0.00127-0.00254[.000050-.000100] NICKEL.
- 4 MOLDED IN ARROW DESIGNATES MATING FACE OF CONNECTOR.
- 5 DIMENSIONS PERTAINS TO CAVITY CENTERLINES.
- 6 DATUMS AND BASIC DIMENSIONS ARE ESTABLISHED BY THE CUSTOMER.

THIS DRAWING IS A CONTROLLED DOCUMENT.

DWN M.BINNER 25OCT01
 CHK J OLSON 25FEB02
 APVD J OLSON 25FEB02
 PRODUCT SPEC
 APPLICATION SPEC
 WEIGHT -

MATERIAL 1 2 FINISH 3

TE Connectivity
 AMPMODU MODII RCPT ASSY, HORIZ, SURFACE MOUNT .100CL, 2 ROW, CLSD-ENTRY, END TO END STACKED

SIZE A2 CAGE CODE 00779 DRAWING NO C=147734 RESTRICTED TO -
 SCALE 5:1 SHEET 1 OF 1 REV E4