

ATLANTIC VERSION TERMINATOR INTERFACE ADAPTER	PART NUMBER	REVISION	DESCRIPTION	FEED TYPE	APPLICATOR STYLE CONVERSION CHART					
					CONVERT TO		PART NUMBERS REQUIRED			
					PNEUMATIC FEED	SERVO LATCH PLATE	2119950-1	1338683-8	5-18022-5	2119641-1
2266261-1	A	FINE CRIMP HEIGHT ADJUST	MECHANICAL	SERVO LATCH PLATE	2119951-1	-	8-2266261-5	1901094-3	-	2168400-6 (QUANTITY 2)
				SMART APPLICATOR	2161326-1	-	8-2266261-4	-	-	
				DOUBLE ACTING	2119950-2	1338685-1	5-18022-5	-	2119799-1	1803430-1
2266261-2	A	FINE CRIMP HEIGHT ADJUST	PNEUMATIC	MECHANICAL FEED	2119949-1	1338683-8	5-18022-5	2119653-1	-	-
				SERVO LATCH PLATE	2119951-1	-	8-2266261-5	1901094-3	-	2168400-6 (QUANTITY 2)
				SMART APPLICATOR	2161326-1	-	8-2266261-4	-	-	
2266261-5	A	FINE CRIMP HEIGHT ADJUST	SERVO LATCH PLATE	DOUBLE ACTING	2119950-2	1338685-1	5-18022-5	-	2119799-1	1803430-1
				MECHANICAL FEED	2119949-1	1338683-8	5-18022-5	2119653-1	-	-
				PNEUMATIC FEED	2119950-1	1338683-8	5-18022-5	2119641-1	2119799-1	2063440-1
2266261-6	A	NON-CRIMP HEIGHT ADJUST	SERVO LATCH PLATE	DOUBLE ACTING	2119950-2	1338685-1	5-18022-5	-	2119799-1	1803430-1
				MECHANICAL FEED	2119949-1	1338683-8	5-18022-5	2119653-1	-	-
2266261-7	A	FINE CRIMP HEIGHT ADJUST	NONE	-	-	-	-	-	-	-
3-2266261-2	A	FINE CRIMP HEIGHT ADJUST	DOUBLE ACTING PNEUMATIC WITH SENSORS	MECHANICAL FEED	2119949-1	1338685-1	5-18022-5	2119653-1	-	-
				PNEUMATIC FEED	2119950-1	1338685-1	5-18022-5	2119641-1	2119799-1	2063440-1
				SERVO LATCH PLATE	2119951-1	-	8-2266261-5	1901094-3	-	2168400-6 (QUANTITY 2)
7-2266261-7	A	CRIMP TOOLING KIT	-	-	-	-	-	-	-	-

APPLICATOR DATA		
CRIMP	SIZE	TYPE
WIRE	1.85 mm [.073]	F
INSUL	3.05 mm [.120]	O

APPLICATOR INSTRUCTIONS 408-10389

TERMINAL DATA: DELPHI TERMINAL DELPHI CRIMP SPECIFICATION

TERMINAL NAME: COMPACT TERMINAL SYSTEM 1.5 SEALED

WIRE STRIP LENGTH	INSULATION DIAMETER RANGE
3.92-4.68 mm [.154-.184 IN]	Ø1.30-2.10 mm [.051-.083 IN]

TERMINAL APPLICATION SPECIFICATION DELPHI CRIMP INFORMATION SHEET PAGE 2 OF 4

TERMINALS APPLIED

TE TERMINAL	DELPHI TERMINAL	TE SEAL	DELPHI SEAL	CABLE DIAMETER
2113449-1	15493001	1949130-1	15327918	1.20-2.00
2113449-2	13611693	1949130-2	15327913	1.20-1.60
2113449-3	13740307	1949130-3	15339412	1.90-2.40
2113449-4	15432210	-	-	-

WIRE SIZE	CRIMP HEIGHT mm [INCH]	CRIMP HEIGHT REFERENCE SETTING
1.00mm2	1.30+/-0.05 [.051+/-0.002]	7.9
0.75mm2	1.20+/-0.05 [.047+/-0.002]	8.9
0.50mm2	1.10+/-0.05 [.043+/-0.002]	9.9

- 1 RECOMMENDED SPARE PARTS
- 2 GREASE BEARING SURFACES LIGHTLY
- 3 LUBRICATE DAILY PER THE APPLICATOR INSTRUCTION SHEET SUPPLIED WITH THE APPLICATOR.
- 4 APPLICATOR SPECIFIC DATA TO BE ENTERED INTO BLANK MEMORY CHIP AT ASSEMBLY. SEE BELOW FOR PART NUMBER:
 MECHANICAL FEED WITH "SMART APPLICATOR" CONVERSION: 8-2266261-4
 PNEUMATIC FEED WITH "SMART APPLICATOR" CONVERSION: 8-2266261-4
 SERVO FEED WITH "FINE CRIMP HEIGHT ADJUST": 8-2266261-5
 SERVO FEED WITH "NON-CRIMP HEIGHT ADJUST": 8-2266261-6
- 5 ADJUSTMENT OF THE STRIPPER MAY BE REQUIRED WHEN MOVING THE APPLICATOR BETWEEN BENCH AND LEADMAKER APPLICATIONS.
- 6 APPLY PART NUMBER 1-23419-5 LOCTITE TO THREADS OF ITEMS 62 & 242. APPLY PART NUMBER 2-23419-6 LOCTITE TO THREADS OF ITEMS 242. FOR -6 ONLY APPLY PART NUMBER 1-23419-5 LOCTITE TO THREADS OF ITEMS 37.
- 7 GREASE THREADS, GROOVE AND O-RING ON ITEMS 35 & 252.
- 8 MAGNET, ITEM 166 MUST BE ORIENTED CORRECTLY IN ORDER TO PROPERLY ACTUATE THE COUNTER.
- 9 CRIMP HEIGHT REFERENCE SETTING WAS THE SETTING USED WHEN THE APPLICATOR WAS QUALIFIED AT THE FACTORY. ADJUSTMENT MAY BE NECESSARY WHEN RUNNING APPLICATOR IN THE FIELD.
- 10 SPARE FEED CAM STORAGE LOCATION REFER TO INSTRUCTION SHEET FOR ADDITIONAL INFORMATION.
- 11 TO CONVERT THE APPLICATOR TO A NON-CARRIER CUTTING STYLE, REMOVE ITEM 13 AND ATTACH TO THE LOCATION ON THE BACK SIDE OF THE HOUSING. REFER TO INSTRUCTION SHEET FOR ADDITIONAL INFORMATION.
- 12 WHEN ASSEMBLING A NON CRIMP HEIGHT ADJUST APPLICATOR (-6) USE SHIMS FROM ITEM 260 TO ACHIEVE A NOMINAL SHIM HEIGHT OF 4.50.

- 13 THE INSULATION RANGE LISTED IS FOR THE TERMINAL. REFER TO THE CHART FOR RANGE OF SEALS LISTED ON APPLICATOR DRAWING.
- 14 APPLY TORQ-SEAL IN ALLEN SOCKET TO FILL HOLE AFTER FLAT HD HAS BEEN ADJUSTED TO CORRECT HEIGHT AT QUALIFICATION. APPLY #1-23419-5 LOC-TITE TO THREADS.
- 15 THIS APPLICATOR IS EQUIPPED WITH THE DOUBLE ACTING FEED WITH SENSORS AND IS APPLICATION SPECIFIC. DOES NOT REQUIRE ITEMS 49 & 248.

ITEM NO	PART NO	DESCRIPTION	ITEM NO
-77	-32	-7 -6 -5 -2 -1	1803430-1 AIR FEED MODULE
-77	-32	-7 -6 -5 -2 -1	2119957-2 APPLICATOR SHIM PACK
-77	-32	-7 -6 -5 -2 -1	8-21084-0 O-RING, .676 ID, .070 DIA. MAT.

ATLANTIC VERSION
 Shown on sheets 1 of 4 & 2 of 4
 (Pacific version shown on sheets 3 of 4 & 4 of 4)

SET UP GAUGE	LOC	DIST	REVISIONS			
2119599-1	A	66	REV	DATE	BY	APPV
			A2	ECR-16-016504	22NOV2016	MR TE

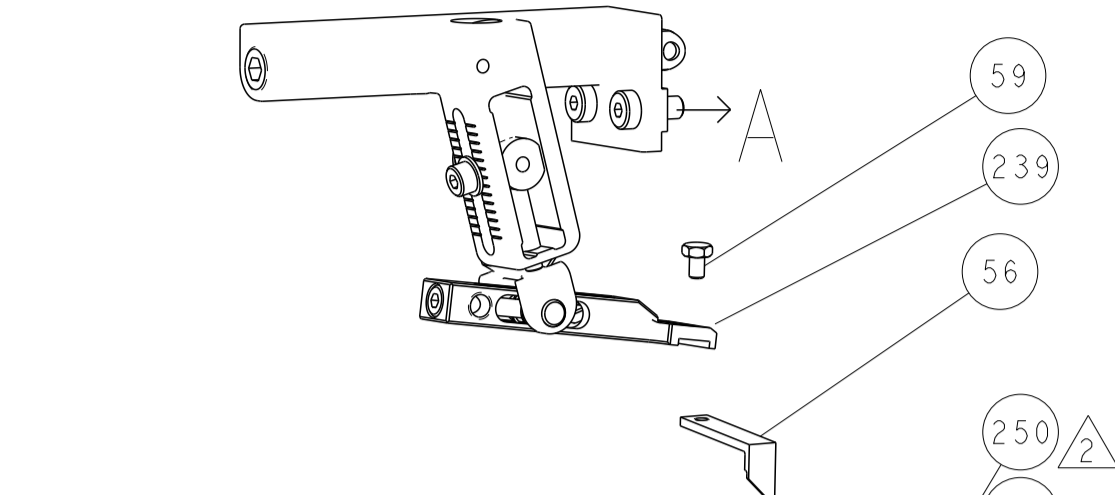
REV	DATE	BY	APPV	DESCRIPTION	ITEM NO	
-	-	-	-	1 -	2119640-1 PUSH ROD, AIR FEED	250
-	-	-	-	1 -	2079988-1 BUSHING, LCH5-12, MISUMI	249
-	-	-	-	1 -	2119641-1 FEED CAM, AIR FEED	248
-	1	1	-	1 1 1	2119798-1 DETENT PIN	247
-	1	1	-	1 1 1	1-22279-3 SPRING, COMPRESSION	246
-	-	-	-	1 -	2119758-1 RAM, AMP STYLE, SIDE FEED, NON-ADJ.	245
-	1	1	1	1 1 1	2119082-4 CAM, SNAIL, INSULATION ADJUSTMENT	244
-	1	1	1	1 1 1	2079764-1 WASHER, WAVE SPRING, CREST-TO-CREST	243
-	1	1	1	1 1 1	2119083-1 RETAINER, INSULATION DIAL	242
-	1	1	1	1 1 1	7-18023-7 SCR, SKT HD CAP M3 X 4.0	241
-	-	-	-	2 2 -	2168400-6 SHCS, LOW HEAD, RoHS, M5 X 16	240
-	-	-	-	- 1	2119580-1 MECHANICAL FEED ASSEMBLY	239
-	-	-	-	- 1	2063440-1 AIR FEED MODULE	238
-	-	-	-	1 -	2119740-2 TAG IDENTIFICATION	213
-	-	-	-	1 1 -	1901094-3 SPACER, FEEDER	198
-	2	-	-	- 2	21045-3 RING, RETAIN, EXTERN, 3/16 CRESCENT	172
-	1	1	1	1 1 1	994969-1 MAGNET, RARE EARTH HIGH ENERGY	166
-	REF	REF	REF	REF REF REF	994970-2 COUNTER, MAGNETIC	164
-	1	-	-	- 1	240638-1 SPRING, FEED FINGER	163
-	1	-	-	- 1	3-23627-7 PIN, RETAIN, GRVD, 3/16 X .854	137
-	1	-	-	- 1	2119799-1 HOLDER, FEED FINGER, AF	136
-	-	-	REF	REF -	SEE NOTE 4 MEMORY CHIP, PROGRAMMED	135
-	-	-	1	1 -	1633743-1 SERVO FEED LATCH ASM	133
-	-	-	REF	REF -	2119944-1 FEED FINGER ASSEMBLY,SF	117
-	1	1	1	1 1 1	455888-6 SPACER, CRIMPER	82
-	1	1	1	1 1 1	2119956-1 DOCUMENTATION PACKAGE	71
-	1	1	-	- 1 1	2119740-1 TAG IDENTIFICATION	67
-	2	2	2	2 2 2	2168078-1 SCREW, DRIVE, RH, RoHS, 2 x .188	66
-	1	1	-	- 1 1	2119793-1 LIMITER, ADJUSTMENT BOLT	63
-	3	3	-	- 3 3	992763-5 SCR, SET, SOC, CONE POINT, M3 x 4.0	62
-	1	1	1	1 1 1	2079383-4 SCR, BHSC, RoHS (M4 X 8)	60
-	1	-	-	- 1 1	5-18022-5 SCR, HEX HD CAP, M4 X 6.0	59
-	1	1	1	1 1 1	985575-3 SCR, FLT SKT HD CAP M3 X 10.0	57
-	1	-	-	- 1 1	1338683-8 FEED PAWL	56
-	4	4	4	4 4 4	2168400-1 SHCS, LOW HEAD, RoHS, M4 X 12	54
-	2	2	2	2 2 2	2168083-3 SCR, SKT HD CAP, RoHS, M4 X 12.0	53
-	1	1	1	1 1 1	5018030-1 NUT, HEX, REG, RoHS, M3	52
-	1	1	1	1 1 1	811242-5 BUMPER, HOLD DOWN	51
-	1	1	1	1 1 1	690753-2 SPACER, TONKER	50
-	-	-	-	- 1 2	18023-9 SCR, SKT HD CAP M4 X 6.0	49
-	-	-	-	- 1	2119652-1 FEED CAM, PRE FEED	48
-	-	-	-	- 1	2119653-1 FEED CAM, POST FEED	47
-	1	1	1	1 1 1	2119656-9 APPLICATOR BASIC ASSEMBLY, SF	46
-	1	1	-	- 1 1 1	2119370-1 RAM, AMP STYLE, SIDE FEED	44
-	1	1	1	1 1 1	2079383-7 SCR, BHSC, RoHS (M8 X 25)	41
-	1	1	-	- 1 1 1	2119645-1 DISC, NUMBERED FA WIRE ADJUSTMENT	40
-	1	1	-	- 1 1 1	2119957-1 APPLICATOR SHIM PACK	39
-	1	1	1	1 1 1	1-2119644-2 RAM WASHER, PRECISION	38
-	1	1	1	1 1 1	2119085-1 FA HEAD, ATLANTIC STYLE	37
-	1	1	-	- 1 1 1	2119092-1 BOLT, ADJUSTMENT	35
-	1	1	1	1 1 1	1-1752356-3 SUPPORT, TERMINAL	34
-	2	2	2	2 2 2	2079383-5 SCR, BHSC, RoHS (M4 X 20)	33
-	1	1	1	1 1 1	2161328-1 HEX HEAD, FLANGED, M5 x 8mm LONG	32
-	1	1	1	1 1 1	1320908-7 SPACER, STRIP GUIDE	30
-	1	1	1	1 1 1	2119959-1 ASSEMBLY, STRIP GUIDE	29
-	1	1	1	1 1 1	455888-3 SPACER, CRIMPER	28
-	1	1	1	1 1 1	1320928-2 STRIP GUIDE	24
-	1	1	1	1 1 1	2168083-2 SCR, SKT HD CAP, RoHS, M4 X 8.0	21
-	2	2	2	2 2 2	1-18028-2 WASHER, FLAT, REG M4	20
-	1	1	1	1 1 1	2119533-1 STRIPPER, SIDE FEED	19
-	1	1	1	1 1 1	2119806-1 INSERT, SHEAR	13
-	1	1	1	1 1 1	3-22280-3 SPRING, COMPRESSION	12
-	1	1	1	1 1 1	1-356885-4 STOP, SHEAR	11
-	1	1	1	1 1 1	2119805-1 SHEAR HOLDER, FRONT	10
-	1	1	1	1 1 1	318707-1 FLOATING SHEAR, FRONT	9
-	1	1	1	1 1 1	4-1633928-4 ANVIL, COMBINATION	8
-	1	1	1	1 1 1	3-240641-3 SPACER	7
-	-	-	-	- -	-	6
-	1	1	1	1 1 1	2-2119781-4 DEPRESSOR, SHEAR	5
-	1	1	1	1 1 1	238011-4 BLOCK, CRIMPER SPACER	4
-	1	1	1	1 1 1	1633965-2 CRIMPER, INSULATION O PREMIUM	3
-	1	1	1	1 1 1	1-455888-0 SPACER, CRIMPER	2
-	1	1	1	1 1 1	8-1633609-8 CRIMPER, WIRE	1

DIMENSIONS:		TOLERANCES UNLESS OTHERWISE SPECIFIED:		MATERIAL:		FINISH:		WEIGHT:	
mm	0 PLC ±	1 PLC ±	2 PLC ±	3 PLC ±	4 PLC ±	ANGLES	FINISH		

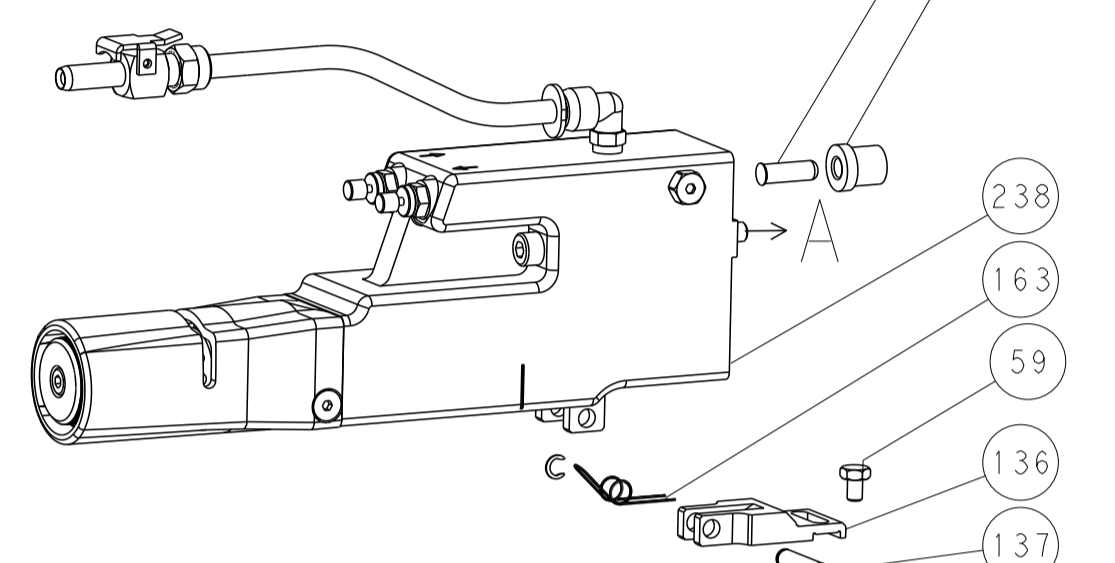
Customer Accessible Production Drawing SCALE 1:2 SHEET 1 OF 4 REV A2

LOC		DIST		REVISIONS			
P	LTN	DESCRIPTION	DATE	DMN	APVD		
-	-	SEE SHEET 1	-	-	-	-	-

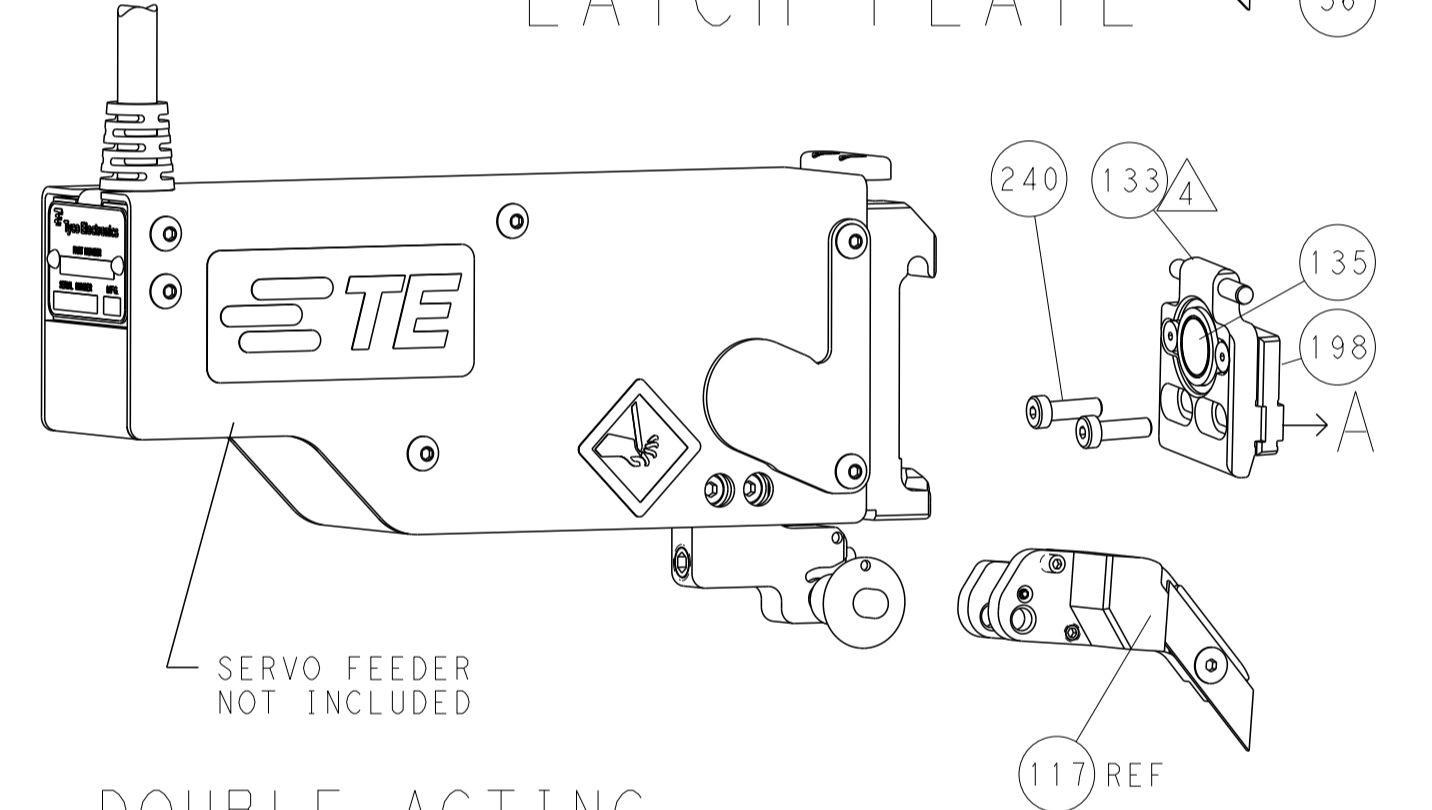
FEED TYPE MECHANICAL



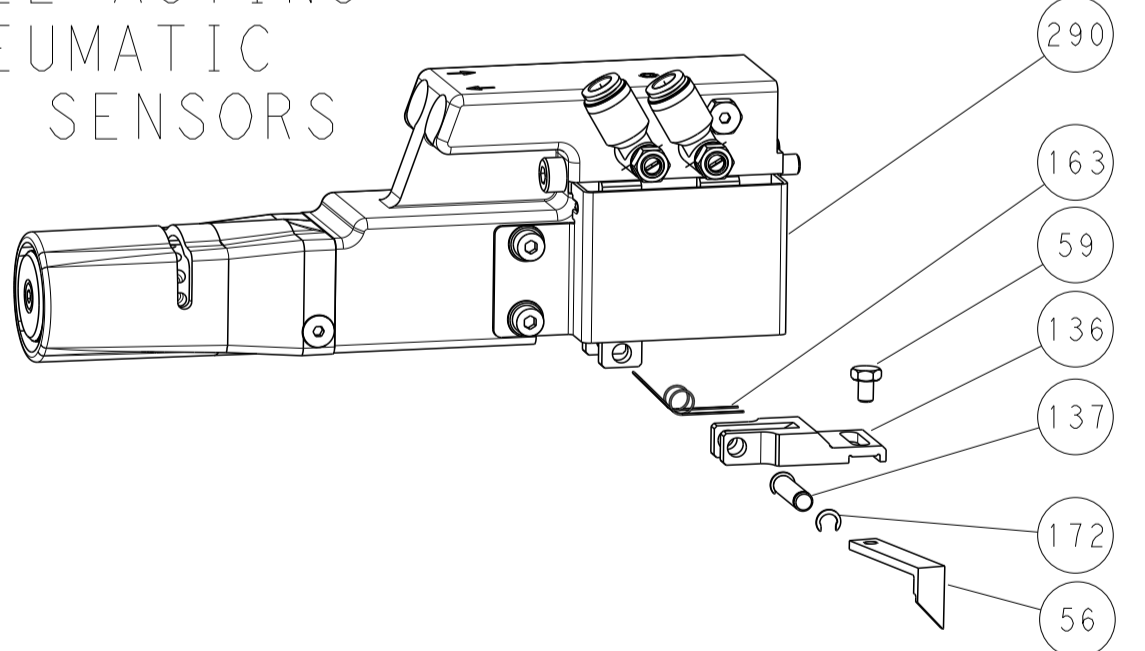
PNEUMATIC



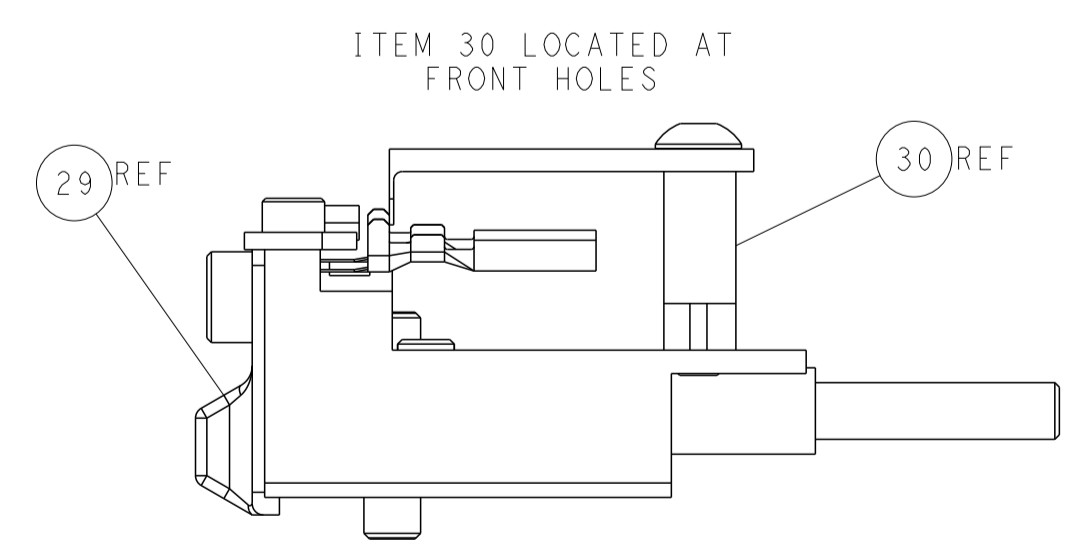
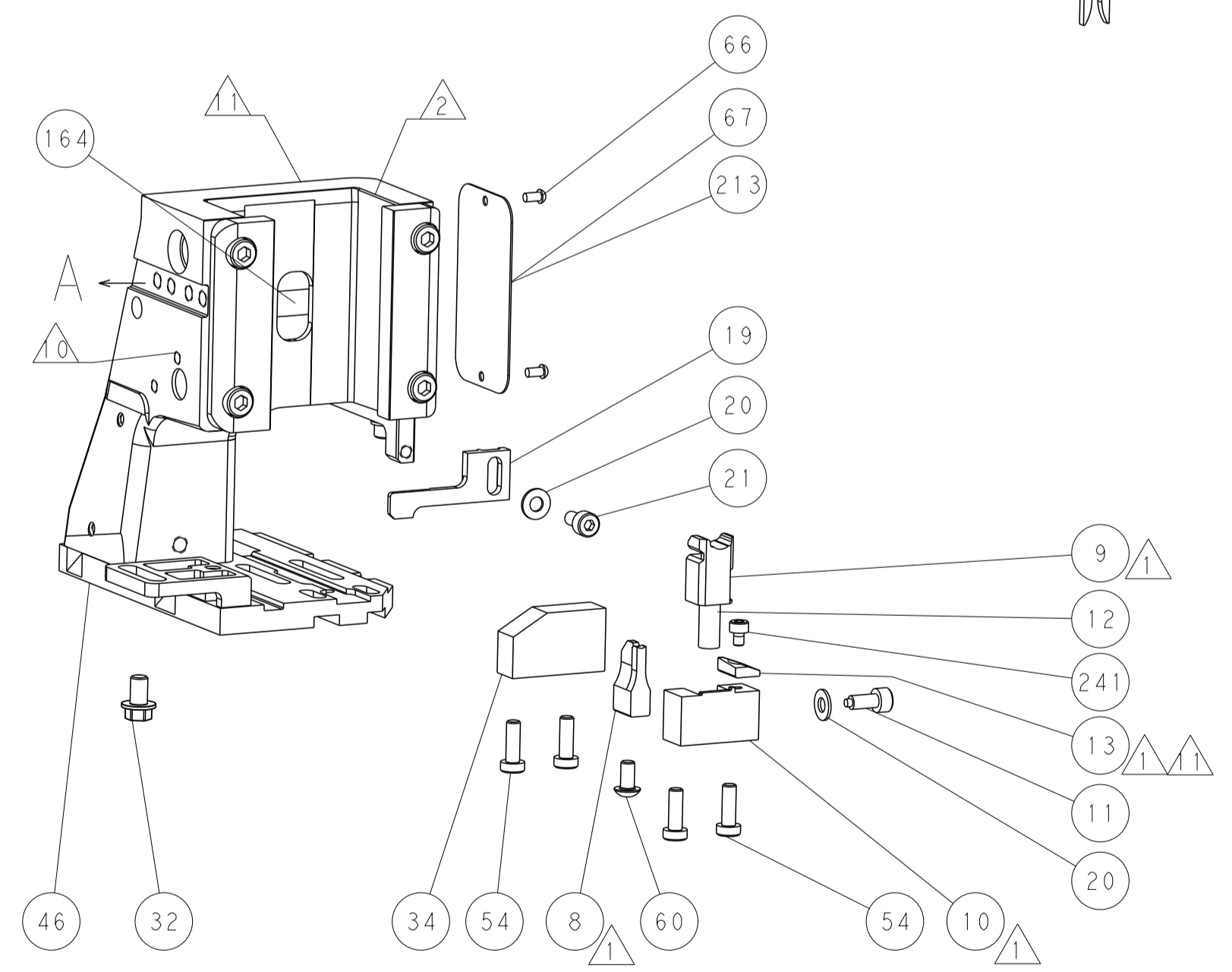
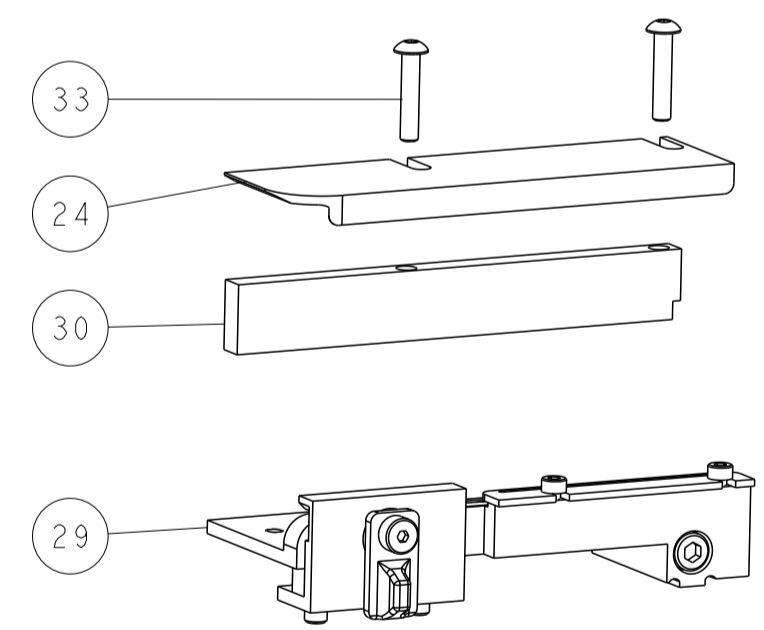
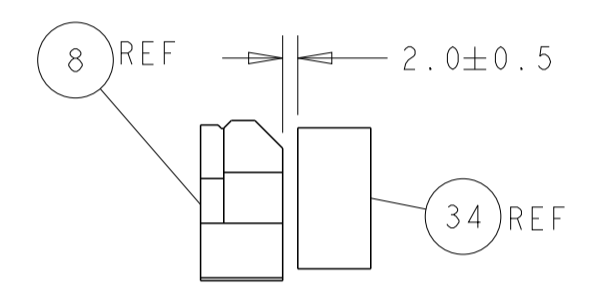
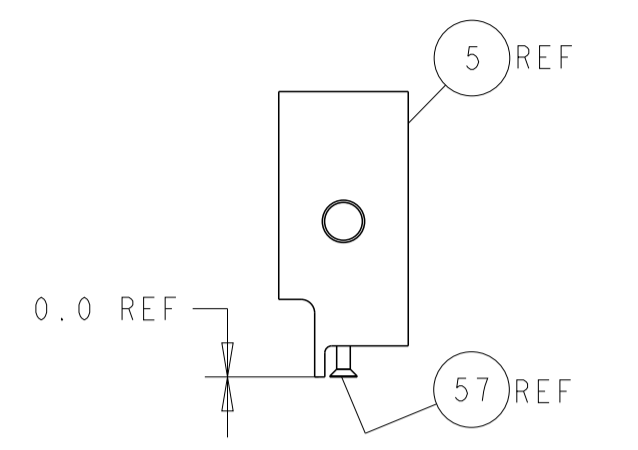
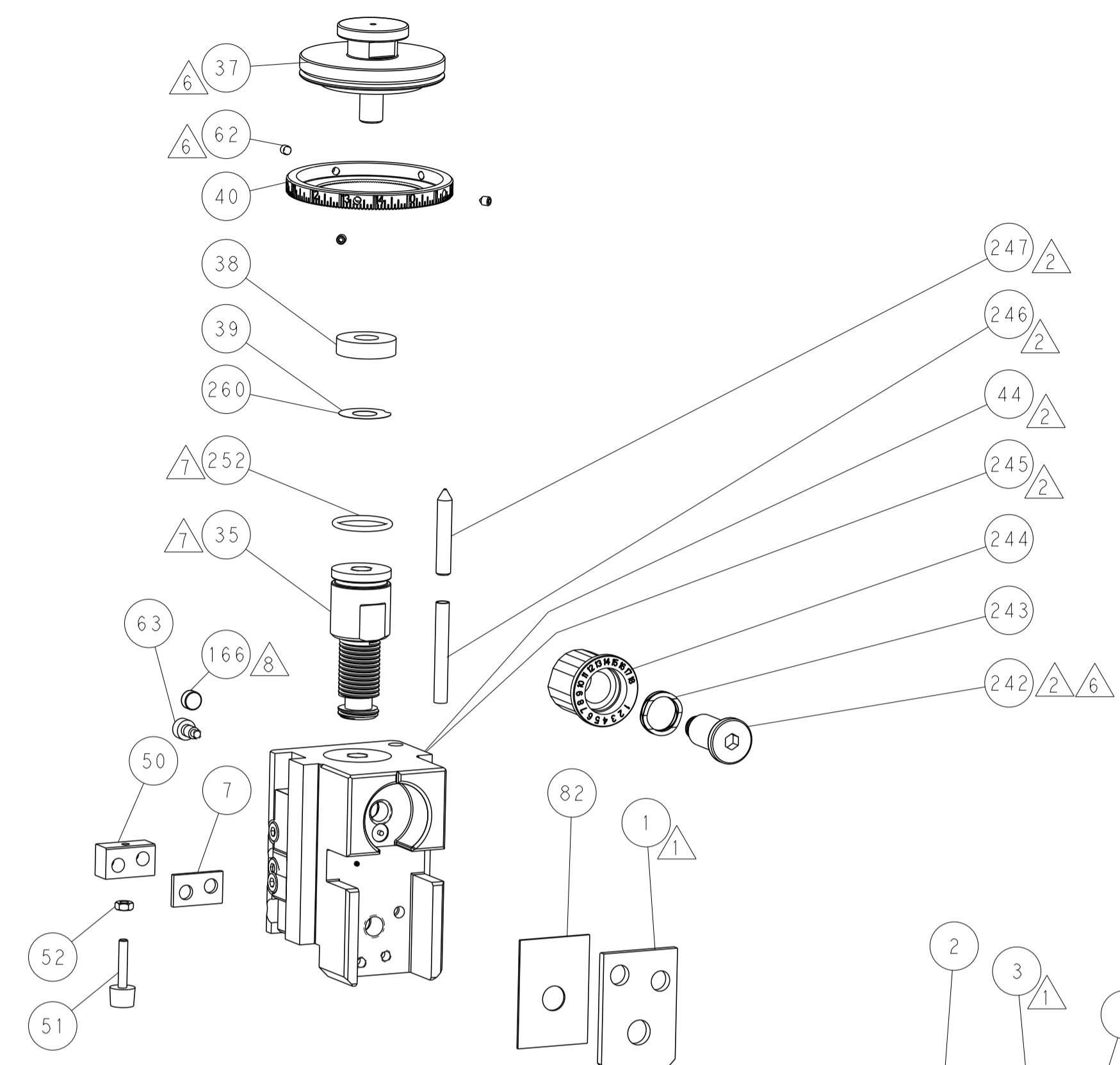
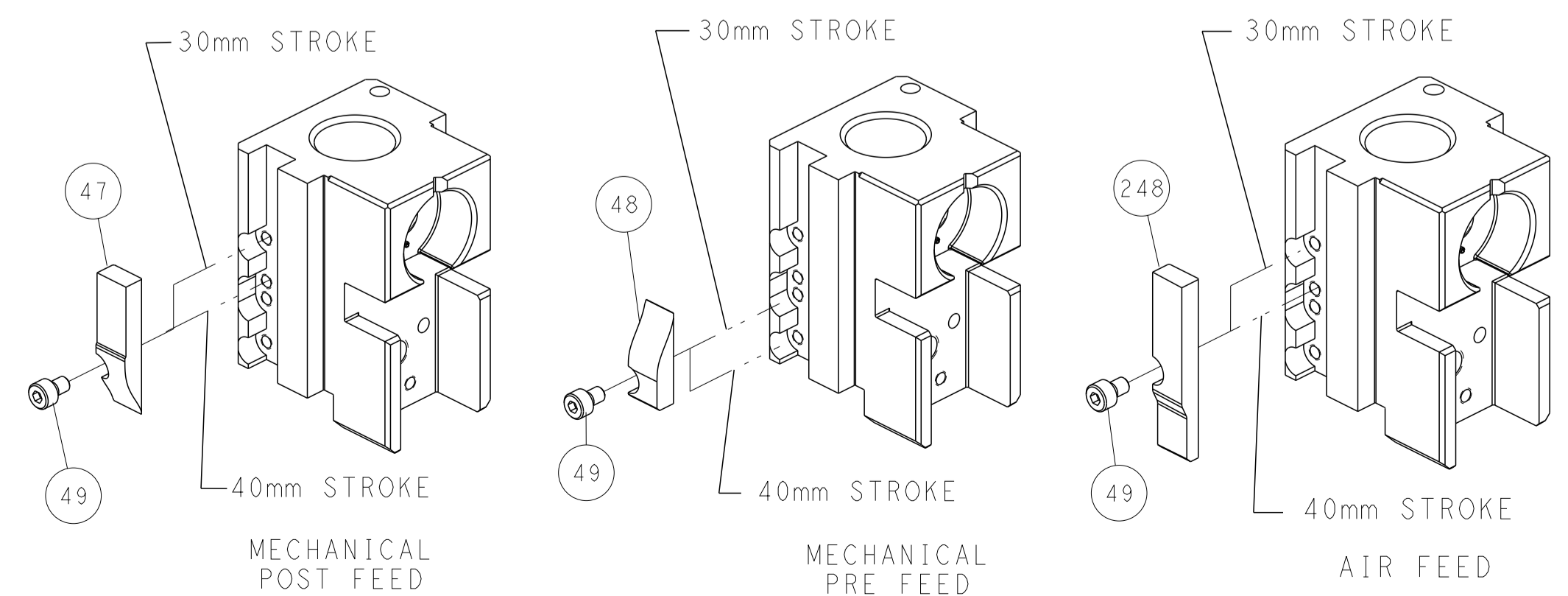
SERVO LATCH PLATE



DOUBLE ACTING PNEUMATIC WITH SENSORS



CAM POSITIONS



ATLANTIC VERSION
 Shown on sheets 1 of 4 & 2 of 4
 (Pacific version shown on sheets 3 of 4 & 4 of 4)

DIMENSIONS:		TOLERANCES UNLESS OTHERWISE SPECIFIED:		DMN X.ZHAO 11APR2014	TE Connectivity Harrisburg, PA 17105-3608
mm	0 PLC ±	1 PLC ±	2 PLC ±	CHK L.ZHANG 11APR2014	
MATERIAL:	FINISH:	3 PLC ±	4 PLC ±	APVD J.ELBIN 11APR2014	NAME Ocean Side Feed Applicator
		ANGLES ±	ANGLES ±	PRODUCT SPEC	
Customer Accessible Production Drawing		SCALE 1:2	SHEET 2 OF 4	REV A2	RESTRICTED TO

PACIFIC VERSION TERMINATOR INTERFACE ADAPTER	PART NUMBER	REVISION	DESCRIPTION	FEED TYPE	APPLICATOR STYLE CONVERSION CHART							
					CONVERT TO	PART NUMBERS REQUIRED						
	2-2266261-1	A	FINE CRIMP HEIGHT ADJUST	MECHANICAL	PNEUMATIC FEED	2119950-1	1338683-8	5-18022-5	2119641-2	2119799-1	2063440-1	
					SERVO LATCH PLATE	2119951-1	-	8-2266261-5	1901094-3	-	2168400-6 (QUANTITY 2)	
					SMART APPLICATOR	2161326-1	-	8-2266261-4	-	-	-	
					DOUBLE ACTING	2119950-2	1338685-1	5-18022-5	-	2119799-1	1803430-1	
					MECHANICAL FEED	2119949-1	1338683-8	5-18022-5	2119653-2	-	-	
					SERVO LATCH PLATE	2119951-1	-	8-2266261-5	1901094-3	-	2168400-6 (QUANTITY 2)	
	2-2266261-2	A	FINE CRIMP HEIGHT ADJUST	PNEUMATIC	SMART APPLICATOR	2161326-1	-	8-2266261-4	-	-	-	-
					DOUBLE ACTING	2119950-2	1338685-1	5-18022-5	-	2119799-1	1803403-1	
					MECHANICAL FEED	2119949-1	1338683-8	5-18022-5	2119653-2	-	-	
					SERVO LATCH PLATE	2119951-1	-	8-2266261-5	1901094-3	-	2168400-6 (QUANTITY 2)	
					PNEUMATIC FEED	2119950-1	1338683-8	5-18022-5	2119641-2	2119799-1	2063440-1	
					DOUBLE ACTING	2119950-2	1338685-1	5-18022-5	-	2119799-1	1803430-1	
2-2266261-5	A	FINE CRIMP HEIGHT ADJUST	SERVO LATCH PLATE	MECHANICAL FEED	2119949-1	1338683-8	5-18022-5	2119653-2	-	-		
				PNEUMATIC FEED	2119950-1	1338683-8	5-18022-5	2119641-2	2119799-1	2063440-1		
2-2266261-7	A	FINE CRIMP HEIGHT ADJUST	NONE	DOUBLE ACTING	2119950-2	1338685-1	5-18022-5	-	2119799-1	1803430-1		
				-	-	-	-	-	-	-		
4-2266261-2	A	FINE CRIMP HEIGHT ADJUST	DOUBLE ACTING PNEUMATIC WITH SENSORS	MECHANICAL FEED	2119949-1	1338685-1	5-18022-5	2119653-2	-	-		
				PNEUMATIC FEED	2119950-1	1338685-1	5-18022-5	2119641-2	2119799-1	2063440-1		
				SERVO LATCH PLATE	2119951-1	-	8-2266261-5	1901094-3	-	2168400-6 (QUANTITY 2)		
				SMART APPLICATOR	2161326-1	-	8-2266261-4	-	-	-		
7-2266261-7	A	CRIMP TOOLING KIT	-	-	-	-	-	-	-	-		

APPLICATOR DATA		
CRIMP	SIZE	TYPE
WIRE	1.85 mm [.073]	F
INSUL	3.05 mm [.120]	O

APPLICATOR INSTRUCTIONS
408-10389

TERMINAL DATA: DELPHI TERMINAL DELPHI CRIMP SPECIFICATION

TERMINAL NAME: COMPACT TERMINAL SYSTEM 1.5 SEALED

WIRE STRIP LENGTH 3.92-4.68 mm [1.54-.184 IN]	INSULATION DIAMETER RANGE Ø1.30-2.10 mm [.051-.083 IN]
--	---

TERMINAL APPLICATION SPECIFICATION DELPHI CRIMP INFORMATION SHEET PAGE 2 OF 4

TERMINALS APPLIED

TE TERMINAL	DELPHI TERMINAL	TE SEAL	DELPHI SEAL	CABLE DIAMETER
2113449-1	15493001	1949130-1	15327918	1.20-2.00
2113449-2	13611693	1949130-2	15327913	1.20-1.60
2113449-3	13740307	1949130-3	15339412	1.90-2.40
2113449-4	15432210	-	-	-

WIRE SIZE	CRIMP HEIGHT mm [INCH]	CRIMP HEIGHT REFERENCE SETTING
1.00mm2	1.30+/-0.05 [.051+/-0.002]	7.9
0.75mm2	1.20+/-0.05 [.047+/-0.002]	8.9
0.50mm2	1.10+/-0.05 [.043+/-0.002]	9.9

- 1 RECOMMENDED SPARE PARTS
- 2 GREASE BEARING SURFACES LIGHTLY
- 3 LUBRICATE DAILY PER THE APPLICATOR INSTRUCTION SHEET SUPPLIED WITH THE APPLICATOR.
- 4 APPLICATOR SPECIFIC DATA TO BE ENTERED INTO BLANK MEMORY CHIP AT ASSEMBLY. SEE BELOW FOR PART NUMBER:
 MECHANICAL FEED WITH "SMART APPLICATOR" CONVERSION: 8-2266261-4
 PNEUMATIC FEED WITH "SMART APPLICATOR" CONVERSION: 8-2266261-4
 SERVO FEED WITH "FINE CRIMP HEIGHT ADJUST": 8-2266261-5
- 5. ADJUSTMENT OF THE STRIPPER MAY BE REQUIRED WHEN MOVING THE APPLICATOR BETWEEN BENCH AND LEADMAKER APPLICATIONS.
- 6 APPLY PART NUMBER 1-23419-5 LOCTITE TO THREADS OF ITEMS 62. APPLY PART NUMBER 2-23419-6 LOCTITE TO THREADS OF ITEMS 242.
- 7 GREASE THREADS, GROOVE AND O-RING ON ITEMS 139 & 152.
- 8 MAGNET MUST BE ORIENTED CORRECTLY IN ORDER TO PROPERLY ACTUATE THE COUNTER.
- 9 CRIMP HEIGHT REFERENCE SETTING WAS THE SETTING USED WHEN THE APPLICATOR WAS QUALIFIED AT THE FACTORY. ADJUSTMENT MAY BE NECESSARY WHEN RUNNING APPLICATOR IN THE FIELD.
- 10 SPARE FEED CAM STORAGE LOCATION REFER TO INSTRUCTION SHEET FOR ADDITIONAL INFORMATION.
- 11 TO CONVERT THE APPLICATOR TO A NON-CARRIER CUTTING STYLE, REMOVE ITEM 13 AND ATTACH TO THE LOCATION ON BACK SIDE OF THE HOUSING. REFER TO INSTRUCTION SHEET FOR ADDITIONAL INFORMATION.
- 12 THE INSULATION RANGE LISTED IS FOR THE TERMINAL. REFER TO THE CHART FOR RANGE OF SEALS LISTED ON APPLICATOR DRAWING.
- 13 APPLY TORO-SEAL IN ALLEN SOCKET TO FILL HOLE AFTER FLAT HD HAS BEEN ADJUSTED TO CORRECT HEIGHT AT QUALIFICATION. APPLY #1-23419-5 LOC-TITE TO THREADS.

14 THIS APPLICATOR IS EQUIPPED WITH THE DOUBLE ACTING FEED WITH SENSORS AND IS APPLICATION SPECIFIC. DOES NOT REQUIRE ITEMS 49 & 151.

*WARNING
 ON INSTALLATION, SET WIRE DISC, ITEM 40 TO LARGEST WIRE SIZE SETTING. USE OF SETTINGS BELOW MINIMUM REQUIRED CRIMP HEIGHT SETTING WILL CAUSE DAMAGE TO CRIMP TOOLING.

-	1	-	-	-	-	1803430-1	AIR FEED MODULE	290
-77	-42	-27	-25	-22	-21	PART NO	DESCRIPTION	ITEM NO

PACIFIC VERSION
 Shown on sheets 3 of 4 & 4 of 4
 (Atlantic version shown on sheets 1 of 4 & 2 of 4)

SET UP GAUGE	LOC	DIST	REVISIONS					
2119599-1	A	66	P	LTN	DESCRIPTION	DATE	OWN	APVD
-	-	-	-	-	SEE SHEET 1	-	-	-

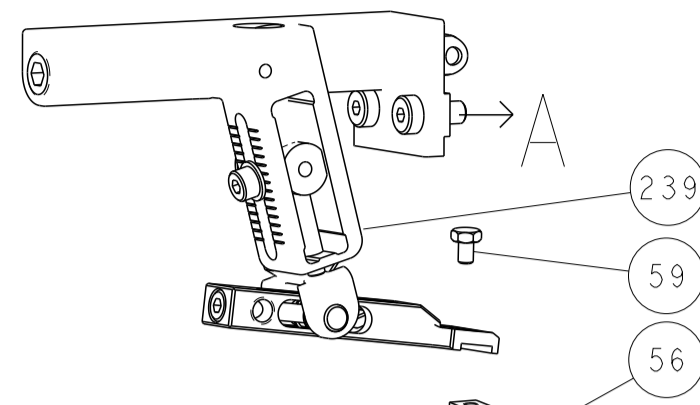
-	1	1	1	1	1	2119782-1	FINE ADJUST HEAD ASM, PACIFIC STYLE	251
-	-	-	-	1	-	2119640-1	PUSH ROD, AIR FEED	250
-	-	-	-	1	-	2079988-1	BUSHING, LCH5-12, MISUMI	249
-	1	1	1	1	1	1-22279-3	SPRING, COMPRESSION	246
-	1	1	1	1	1	2119082-4	CAM, SNAIL, INSULATION ADJUSTMENT	244
-	1	1	1	1	1	2079764-1	WASHER, WAVE SPRING, CREST-TO-CREST	243
-	1	1	1	1	1	2119083-1	RETAINER, INSULATION DIAL	242
-	1	1	1	1	1	7-18023-7	SCR, SKT HD CAP M3 X 4.0	241
-	-	-	2	-	-	2168400-6	SHCS, LOW HEAD, RoHS, M5 X 16	240
-	-	-	-	-	1	2119580-1	MECHANICAL FEED ASSEMBLY	239
-	-	-	-	1	-	2063440-1	AIR FEED MODULE	238
-	-	-	1	-	-	2119740-2	TAG, IDENTIFICATION	213
-	-	-	1	-	-	1901094-3	SPACER, FEEDER	198
-	-	-	-	2	-	21045-3	RING, RETAIN, EXTERN, 3/16 CRESCENT	172
-	1	1	1	1	1	994969-1	MAGNET, RARE EARTH HIGH ENERGY	166
-	REF	REF	REF	REF	REF	994970-2	COUNTER, MAGNETIC	164
-	1	-	-	1	-	240638-1	SPRING, FEED FINGER	163
-	1	1	1	1	1	8-21084-1	O-RING, .801 ID, .070 DIA, MAT.	152
-	-	-	-	1	-	2119641-2	FEED CAM, AIR FEED	151
-	1	1	1	1	1	2119798-2	DETENT PIN	145
-	1	1	1	1	1	2079383-8	SCR, BHSC, RoHS (M4 X 16)	144
-	4	4	4	4	4	2168400-5	SHCS, LOW HEAD, RoHS, M4 X 20	143
-	-	-	-	-	1	2119653-2	FEED CAM, POST FEED	142
-	1	1	1	1	1	1-2119656-0	APPLICATOR BASIC ASSEMBLY, SF	141
-	1	1	1	1	1	2119650-1	RAM, ASIAN STYLE, SIDE FEED	140
-	1	1	1	1	1	2119092-2	BOLT, ADJUSTMENT	139
-	1	-	-	1	-	3-23627-7	PIN, RETAIN, GRVD, 3/16 X .854	137
-	-	-	-	1	-	2119799-1	HOLDER, FEED FINGER, AF	136
-	-	-	REF	-	-	SEE NOTE 4	MEMORY CHIP, PROGRAMMED	135
-	-	-	1	-	-	1633743-1	SERVO FEED LATCH ASM	133
-	-	-	REF	-	-	2119944-1	FEED FINGER ASSEMBLY, SF	117
-	1	1	1	1	1	455888-6	SPACER, CRIMPER	82
-	1	1	1	1	1	2119956-1	DOCUMENTATION PACKAGE	71
-	1	1	-	1	1	2119740-1	TAG, IDENTIFICATION	67
-	2	2	2	2	2	2168078-1	SCREW, DRIVE, RH, RoHS, 2 x .188	66
-	1	1	1	1	1	2119793-1	LIMITER, ADJUSTMENT BOLT	63
-	3	3	3	3	3	992763-5	SCR, SET, SOC, CONE POINT, M3 X 4.0	62
-	1	-	-	1	1	5-18022-5	SCR, HEX HD CAP, M4 X 6.0	59
-	1	1	1	1	1	985575-3	SCR, FLT SKT HD CAP M3 X 10.0	57
-	1	-	-	1	1	1338683-8	FEED PAWL	56
-	2	2	2	2	2	2168083-3	SCR, SKT HD CAP, RoHS, M4 X 12.0	53
-	1	1	1	1	1	5018030-1	NUT, HEX, REG, RoHS, M3	52
-	1	1	1	1	1	811242-5	BUMPER, HOLD DOWN	51
-	1	1	1	1	1	690753-2	SPACER, TONKER	50
-	-	-	-	1	2	18023-9	SCR, SKT HD CAP M4 X 6.0	49
-	-	-	-	-	1	2119652-1	FEED CAM, PRE FEED	48
-	1	1	1	1	1	2079383-7	SCR, BHSC, RoHS (M8 X 25)	41
-	1	1	1	1	1	2119645-1	DISC, NUMBERED FA WIRE ADJUSTMENT	40
-	1	1	1	1	1	2119957-1	APPLICATOR SHIM PACK	39
-	1	1	1	1	1	1-2119644-2	RAM WASHER, PRECISION	38
-	1	1	1	1	1	1-1752356-3	SUPPORT, TERMINAL	34
-	2	2	2	2	2	2079383-5	SCR, BHSC, RoHS (M4 X 20)	33
-	1	1	1	1	1	2161328-1	HEX HEAD, FLANGED, M5 X 8mm LONG	32
-	1	1	1	1	1	1320908-7	SPACER, STRIP GUIDE	30
-	1	1	1	1	1	2119959-1	ASSEMBLY, STRIP GUIDE	29
-	1	1	1	1	1	455888-3	SPACER, CRIMPER	28
-	1	1	1	1	1	1320928-2	STRIP GUIDE	24
-	1	1	1	1	1	2168083-2	SCR, SKT HD CAP, RoHS, M4 X 8.0	21
-	2	2	2	2	2	1-18028-2	WASHER, FLAT, REG M4	20
-	1	1	1	1	1	2119533-1	STRIPPER, SIDE FEED	19
-	1	1	1	1	1	2119806-1	INSERT, SHEAR	13
-	1	1	1	1	1	3-22280-3	SPRING, COMPRESSION	12
-	1	1	1	1	1	1-356885-4	STOP, SHEAR	11
-	1	1	1	1	1	2119805-1	SHEAR HOLDER, FRONT	10
-	1	1	1	1	1	318707-1	FLOATING SHEAR, FRONT	9
-	1	1	1	1	1	4-1633928-4	ANVIL, COMBINATION	8
-	1	1	1	1	1	3-240641-3	SPACER	7
-	-	-	-	-	-	-	-	6
-	1	1	1	1	1	2-2119781-4	DEPRESSOR, SHEAR	5
-	1	1	1	1	1	238011-4	BLOCK, CRIMPER SPACER	4
-	1	1	1	1	1	1633965-2	CRIMPER, INSULATION O PREMIUM	3
-	1	1	1	1	1	1-455888-0	SPACER, CRIMPER	2
-	1	1	1	1	1	8-1633609-8	CRIMPER, WIRE	1

DIMENSIONS:		TOLERANCES UNLESS OTHERWISE SPECIFIED:		DRAWING NO	
mm	0 PLC	±		11APR2014	CHK X ZHAO
	1 PLC	±		11APR2014	CHK L ZHANG
	2 PLC	±			APVD T ELBIN
	3 PLC	±			11APR2014
	4 PLC	±			
	ANGLES	±			
	FINISH	±			

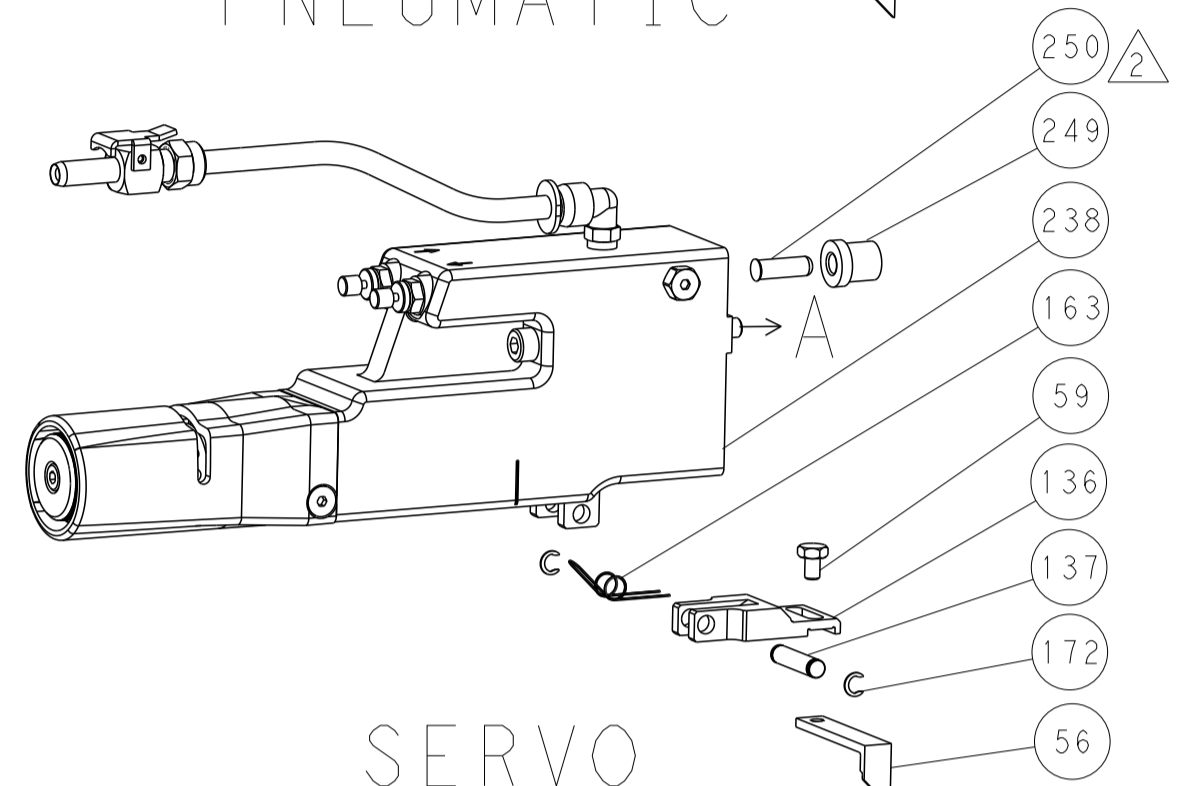
NAME	Ocean Side Feed Applicator	
SIZE	CAGE CODE	DRAWING NO
A1	00779	2266261
Customer Accessible Production Drawing		SCALE 1:2 SHEET 3 OF 4 REV A2

LOC		DIST		REVISIONS			
A	66	P	LTM	DESCRIPTION	DATE	OWN	APVD
		-		SEE SHEET 1			

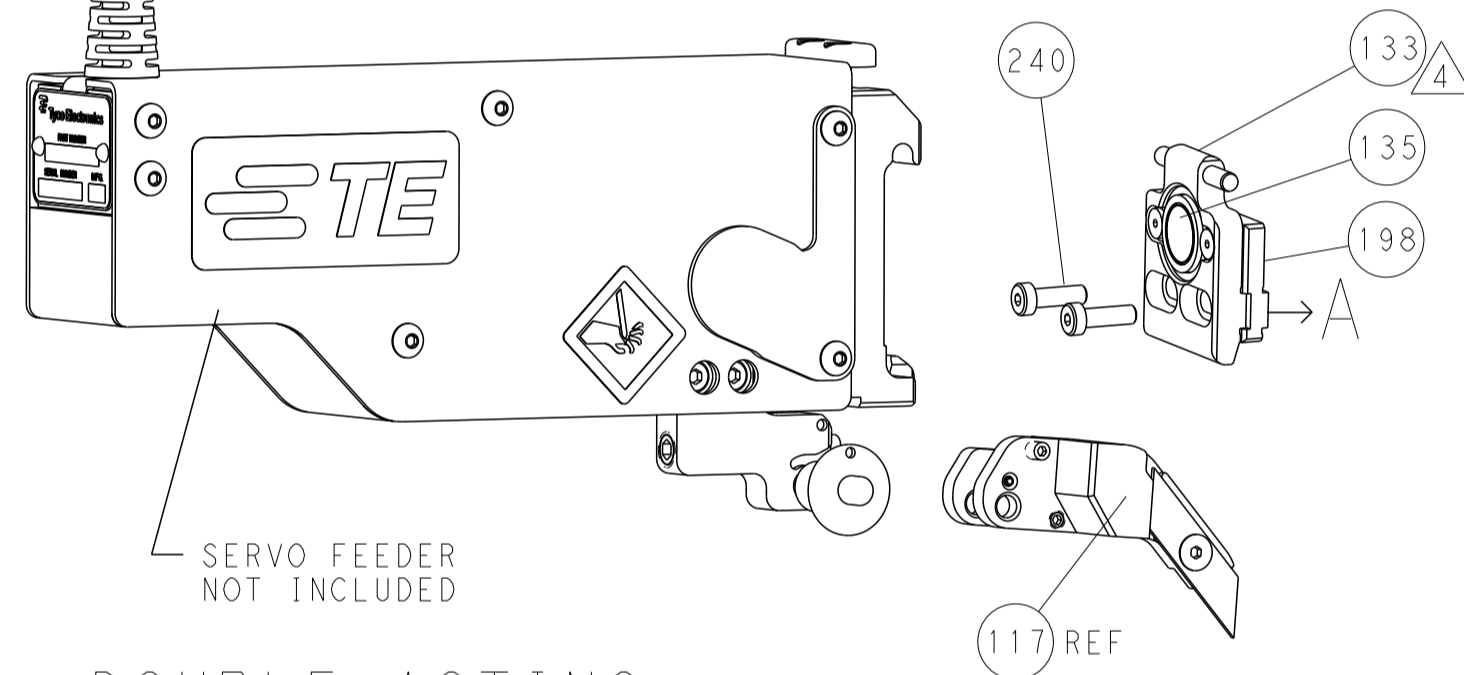
FEED TYPE MECHANICAL



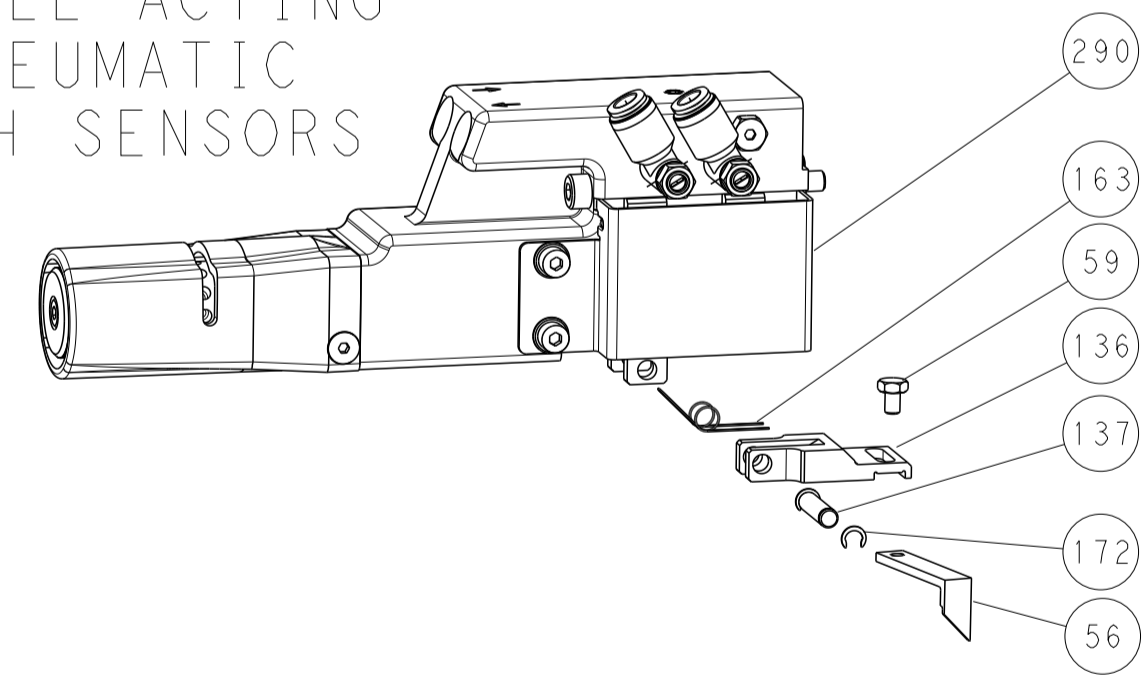
PNEUMATIC



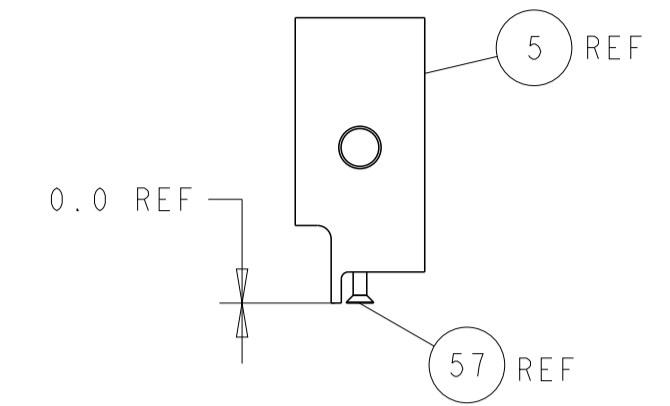
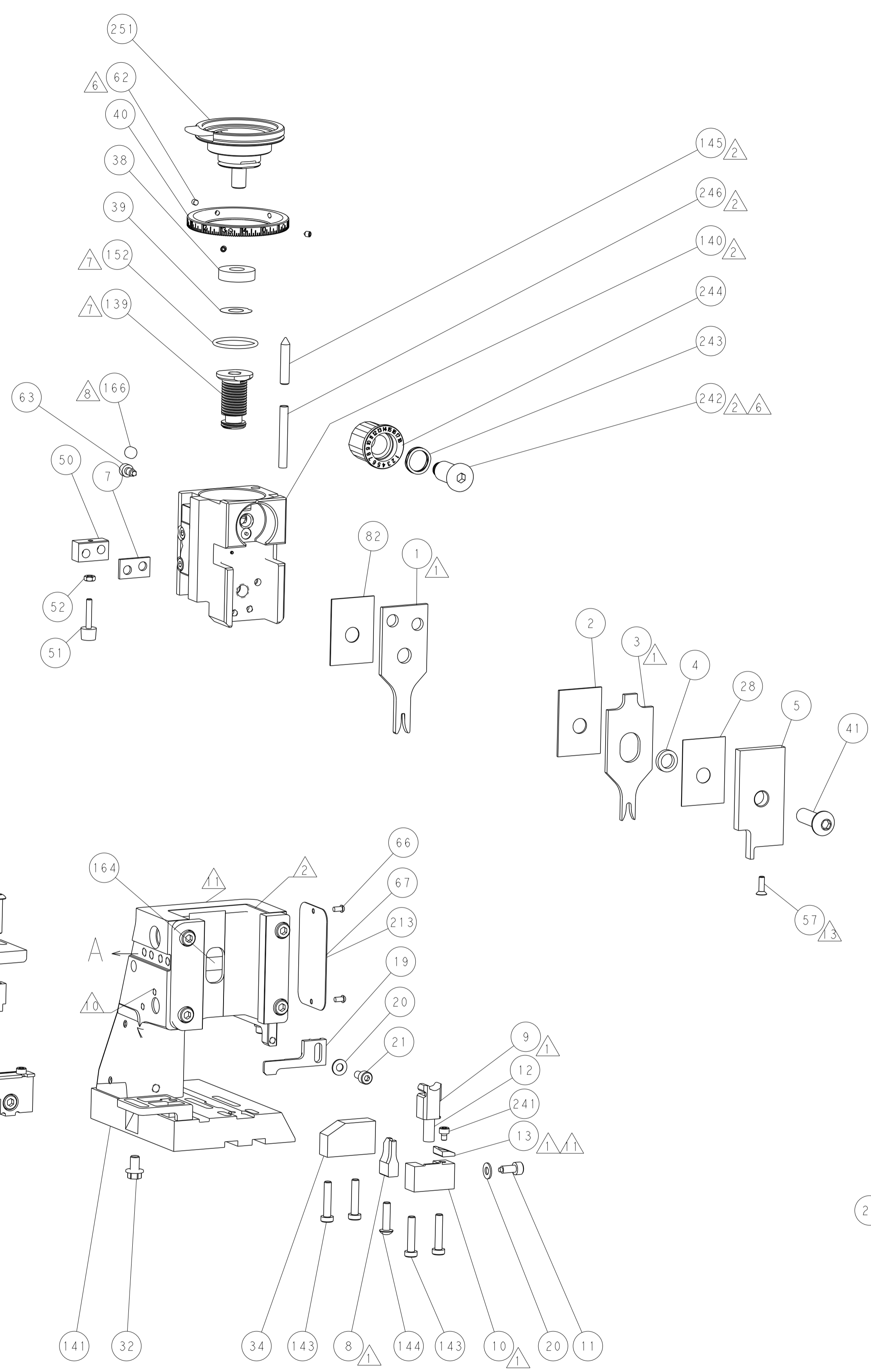
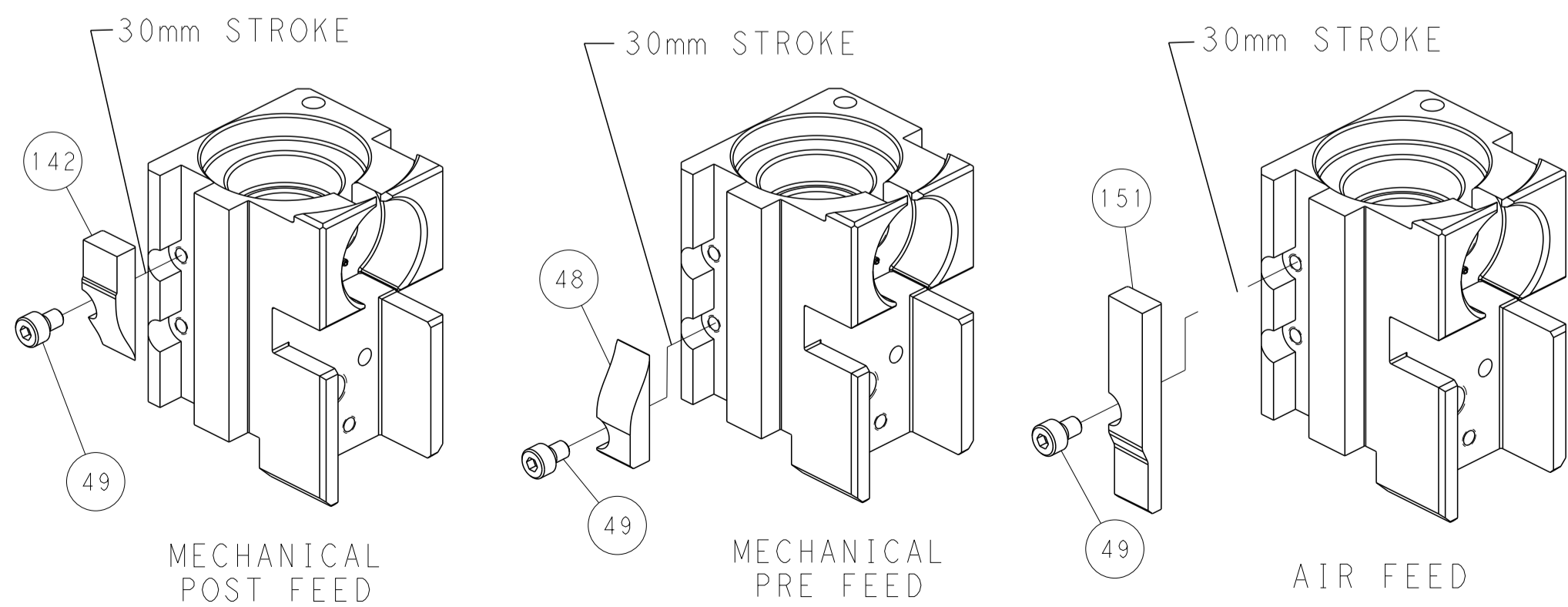
SERVO LATCH PLATE



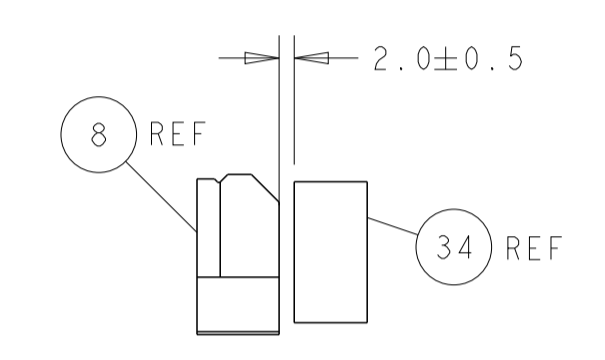
DOUBLE ACTING PNEUMATIC WITH SENSORS



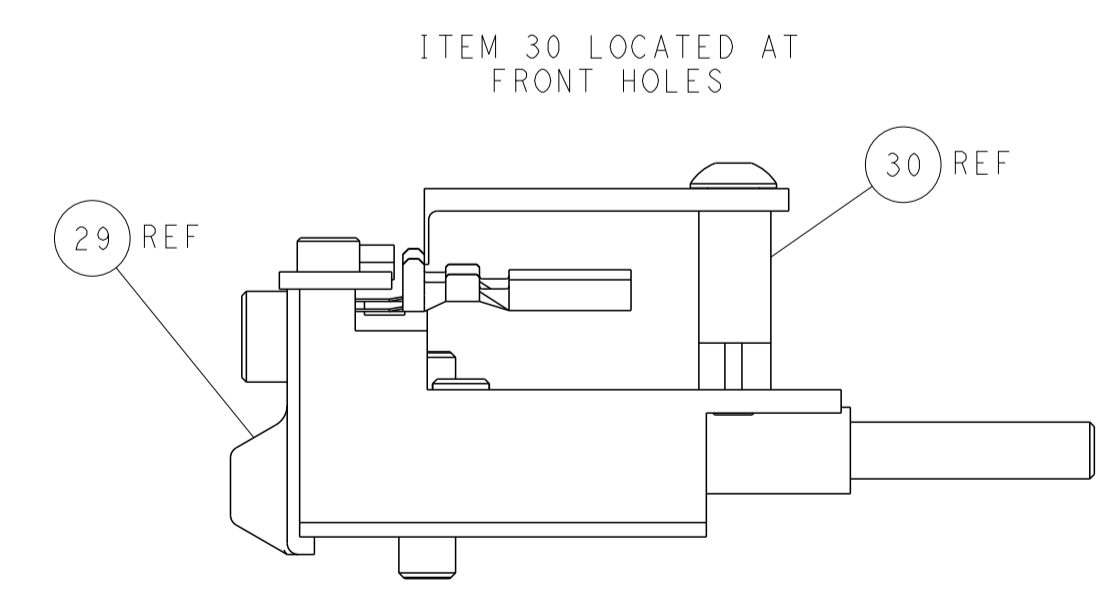
CAM POSITIONS



SHEAR DEPRESSOR DETAIL



TERMINAL SUPPORT LOCATION



FEED TRACK POSITION
GUIDE BY INSULATION BARREL

PACIFIC VERSION
 Shown on sheets 3 of 4 & 4 of 4
 (Atlantic version shown on sheets 1 of 4 & 2 of 4)

DIMENSIONS: mm 		TOLERANCES UNLESS OTHERWISE SPECIFIED: 0 PLC ± 1 PLC ± 2 PLC ± 3 PLC ± 4 PLC ± ANGLES ± FINISH		DWN X. ZHAO 11APR2014 CHK L. ZHANG 11APR2014 APVD T. ELBIN 11APR2014 NAME PRODUCT SPEC APPLICATION SPEC SIZE CAGE CODE DRAWING NO A1 00779 C=2266261 RESTRICTED TO	
MATERIAL:		WEIGHT:		SCALE 1:2 SHEET 4 OF 4 REV A2 Customer Accessible Production Drawing	