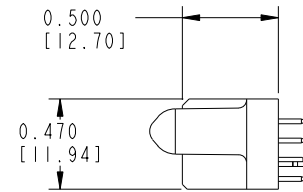
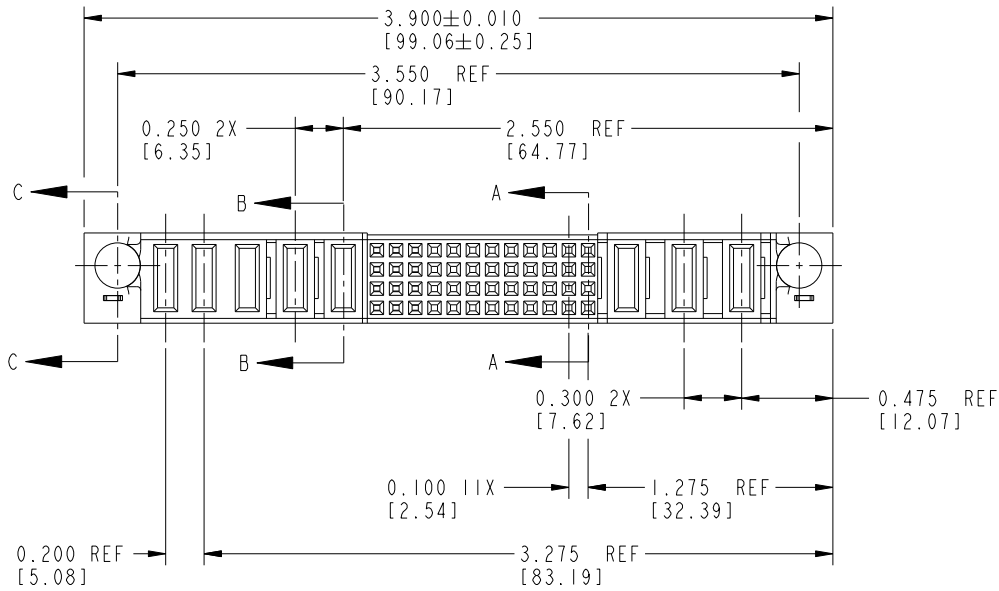
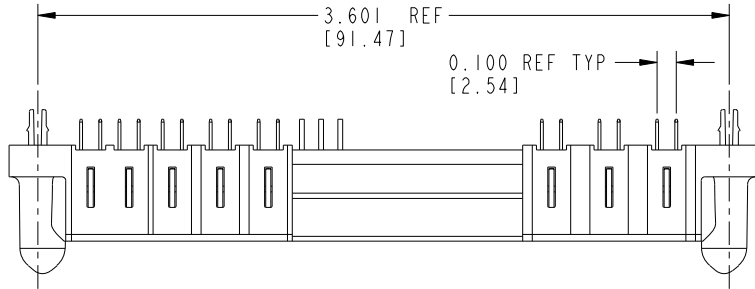




PRODUCT No.	ROWS	POWER					SIGNAL					POWER			E1							
		E2	P8	P7	P6	P5	P4	12	11	10	9	8	7	6		5	4	3	2	1	P3	P2
51784-002	D C B A	HA	PA	PA	PA	PD	PD	E	E	E	X	X	X	X	X	X	X	X	PD	PD	PA	HA



CODE	DIM "M" ±.010 [0.25]	CONTACT TYPE
PA	0.042 [1.07]	POWER
PD	0.092 [2.34]	POWER
HA	N/A [N/A]	HOLD-DOWN
E	N/A [N/A]	SIGNAL
X	OMITTED	OMITTED

mat'l code				SEE NOTES		tolerances unless otherwise specified		CUSTOMER	
ltr	ecn no.	dr	date	linear	.xx±.01/0.X±0.3		COPY		
A	V12259	JRW	9/28/01		.xxx±.005/0.xx±0.13		projection		
B	DG05-0217	SJ	07/11/05		.xxx±.0020/.xxx±.051		INCH/MM		
				angles	0°±2°		scale		
					dr		1:1		
					engr		A		
				chr					
				appd					
sheet index	revision sheet	C	C	C	C				
		1	2	3					

www.fciconnect.com		title		3ACP + 48S + 5P		product family		code	
COPY		VERTICAL SOLDER TAIL RECEPTACLE		PwrBlade		size		213	
INCH/MM		A		51784-002		sheet		1 of 3	

A

A

B

B

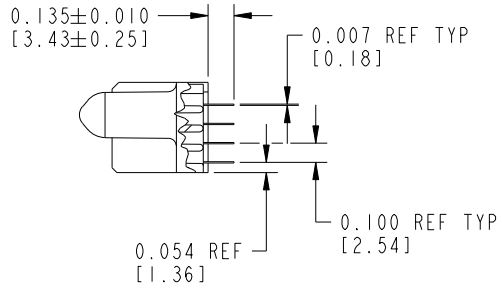
Tous droits strictement réservés. Reproduction ou communication a des tiers interdite sous quelque forme que ce soit sans autorisation écrite du propriétaire. Propriété de c FCI. Droits de reproduction FCI.

All rights strictly reserved. Reproduction or issue to third parties in any form whatever is not permitted without written authority from the proprietor. Property of FCI. Copyright FCI.

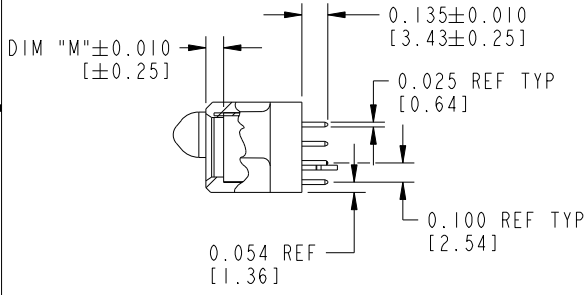


PRODUCT NUMBER

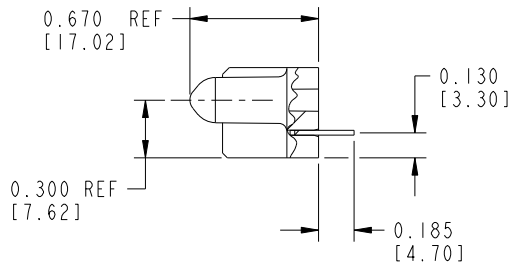
51784-002--
NOTE: ③



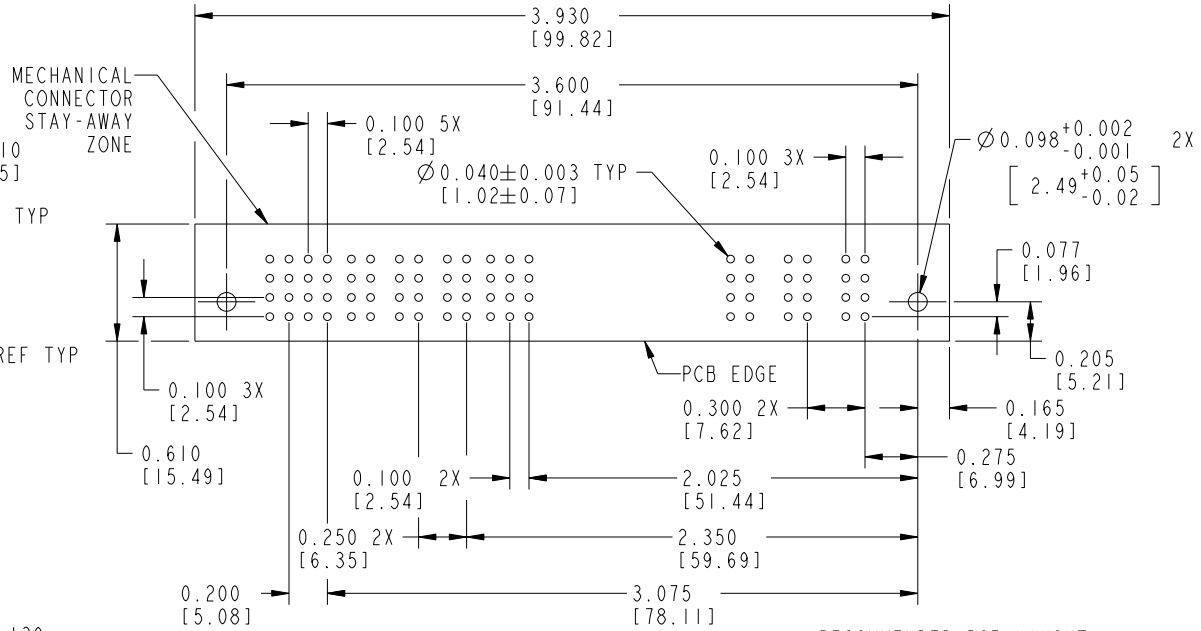
SECTION A-A



SECTION B-B



SECTION C-C



RECOMMENDED PCB LAYOUT

mat'l code		SEE NOTES		tolerances unless otherwise specified		CUSTOMER		FCI		www.fciconnect.com	
ltr	ecn no.	dr	date	linear	.xx±.01/0.X±0.3	COPY		projection		title	
c				angles	.xxx±.005/0.XX±0.13	⊕		⊕		3ACP + 48S + 5P	
					.xxx±.0020/.xxx±.051	INCH/MM		product family		PwrBlade	
				dr	0°±2°	1:1		size		code	
				enrg	J. WITMER 9/28/01			dwg no		213	
				chr	J. ALLISON 9/28/01			51784-002		sheet	
				appd	J. ALLISON 9/28/01					2	
sheet index	revision sheet										

Pro/E

PDM: Rev: C

STATUS: Released

Printed: Dec 20, 2010

1 | 2

3 |

4

1 | 2

4

Tous droits strictement réservés. Reproduction ou communication a des tiers interdite sous quelque forme que ce soit sans autorisation écrite du propriétaire. Propriété de c FCI. Droits de reproduction FCI.



All rights strictly reserved. Reproduction or issue to third parties in any form whatever is not permitted without written authority from the proprietor. Property of FCI. Copyright FCI.

1 | 2

3 |

4

PRODUCT NUMBER
51784-002--
NOTE: ③

CONNECTOR NOTES:

1. HOUSING MATERIAL: UL 94 V-0 GLASS FILLED HIGH TEMP THERMOPLASTIC
POWER CONTACT MATERIAL: COPPER ALLOY
SIGNAL CONTACT MATERIAL: COPPER ALLOY
2. "MANUFACTURER" NAME, P/N, AND DATE CODE TO APPEAR ON THIS SURFACE
- ③ 3. SEE ITEM 5 & 6 IN PRINT 10064183 FOR PLATING SPEC OF 51784-002 AND 51784-002LF RESPECTIVELY.

4. PRODUCT SPECIFICATION GS-12-149

PCB NOTES:

5. ALL DIMENSIONS ARE BASIC UNLESS OTHERWISE SPECIFIED.
6. ALL THROUGH HOLES ARE LOCATED WITH A TRUE POSITION OF 0.004 [0.10]
7. ALL HOLE DIAMETERS ARE FINISHED HOLE SIZE
8. $\varnothing 0.098$ THROUGH HOLES ARE UNPLATED.
9. $\varnothing 0.0453 \pm 0.0010$ [1.151 \pm 0.025] DRILLED HOLES PLATED WITH 0.0003 [0.008] MIN SnPb OVER 0.001 [0.03] TO 0.003 [0.08] Cu PLATING TO ACHIEVE A $\varnothing 0.040$ HOLE.
10. A ③ SYMBOL WILL BE NEXT TO ANY DIMENSION, VIEW, OR NOTE WHICH HAS BEEN MODIFIED WITH THE CURRENT DRAWING REVISION.

CONFIDENTIAL

mat'l code		NOTES		tolerances unless otherwise specified		CUSTOMER		FCI	
ltr	ecn no.	dr	date	linear	.XX±.01/0.XX±0.3	COPY		www.fciconnect.com	
c				linear	.XXX±.005/0.XX±0.13	projection		title	
				angles	.XXX±.0020/.XXX±.051			3ACP + 48S + 5P	
					0°±2°			VERTICAL SOLDER TAIL RECEPTACLE	
		dr	J. WITMER 9/28/01			INCH/MM		product family PwrBlade	
		enr	J. ALLISON 9/28/01			scale		code	
		chr	J. ALLISON 9/28/01			1:1		size	
		appd	J. ALLISON 9/28/01			A		dwg no	
sheet index	revision sheet					51784-002		213	
								sheet	
								3	

1 | 2

Pro/E

PDM: Rev: C

STATUS: **Released**

Printed: Dec 20, 2010

A

A

B

B