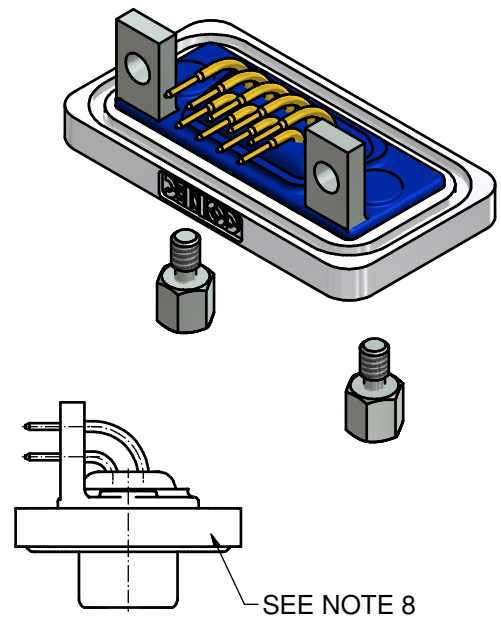
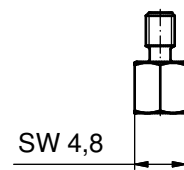
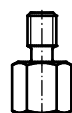
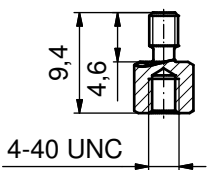
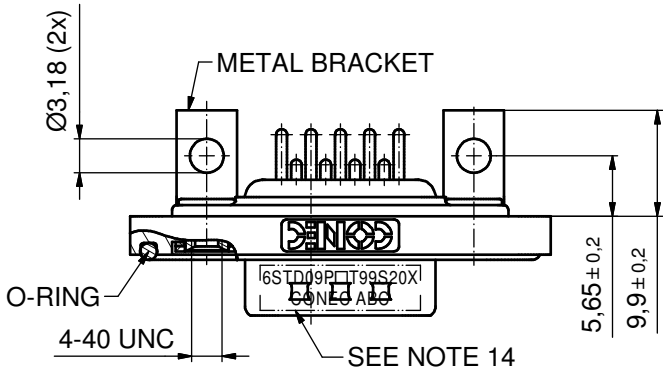
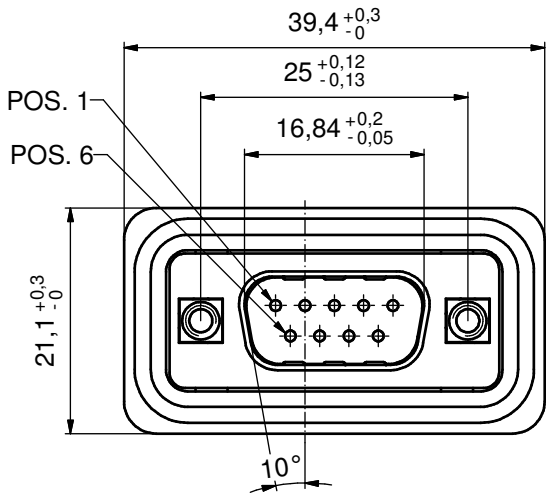
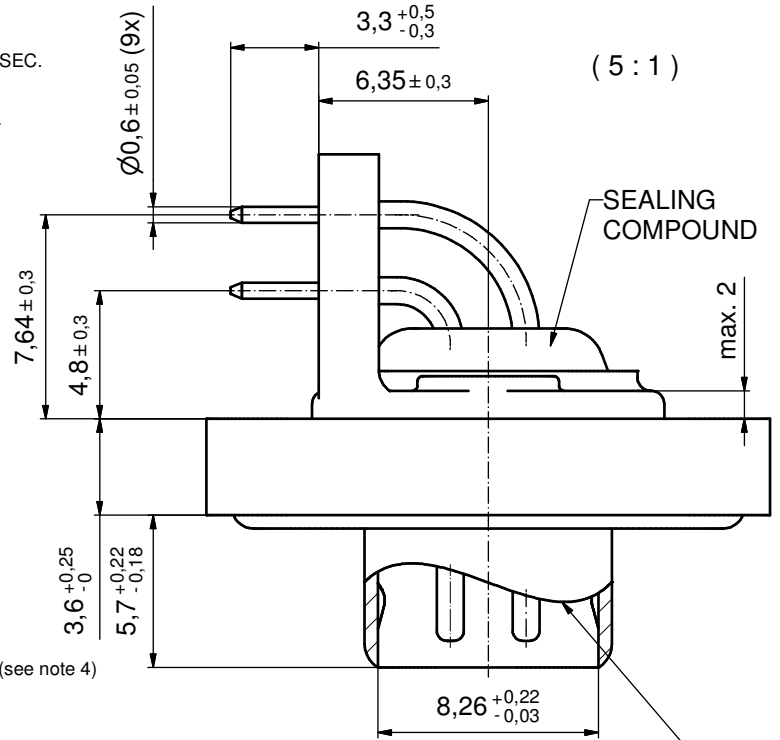


NOTES:

1. FOR WAVESOLDERING (SOLDER BATH TEMPERATURE 240°C FOR 5 SEC. AND SOLDER PREHEAT 120°C FOR 120 SEC.)
2. METAL SHELLS: COPPER ALLOY; min. 315µin over 40-80µin NICKEL
3. INSULATORS: PBT GF UL 94 V-0, BLACK
4. CONTACTS: COPPER ALLOY; PLATING (SEE PART NO.):
 - PLEASE ADD A for GOLD FLASH over NICKEL (PREFERRED TYPE)
 - PLEASE ADD B for 20µin HARD GOLD over min. 50µin NICKEL
 - PLEASE ADD C for 30µin HARD GOLD over min. 50µin NICKEL
5. METAL BRACKETS: ZINC DIE CAST; 300µin COPPER/ 40-120µin NICKEL/120-200µin TIN
6. THREADED INSERTS: COPPER ALLOY; min. 200µin TIN over 80µin NICKEL
7. HEXLOCKING SCREWS: STAINLESS STEEL
8. FRAME: ZINC DIE CAST; NICKEL PLATED
9. O-RING: SILICON; BLUE
10. RUBBER GASKET: TPE
11. SEALING COMPOUND: PUR; BLUE
12. P.C.B. HOLE DRILLINGS AND RECOMMENDED PANEL CUT-OUT ON SHEET 2
13. RECOMMENDED TORQUE FOR MOUNTING SCREW 35N cm (3.1 in.LB) / max. 40N cm (3.5 in.LB)
14. CONNECTOR IS PART MARKED: **6STD09P□T99S20X CONEC ABC** (see note 4)

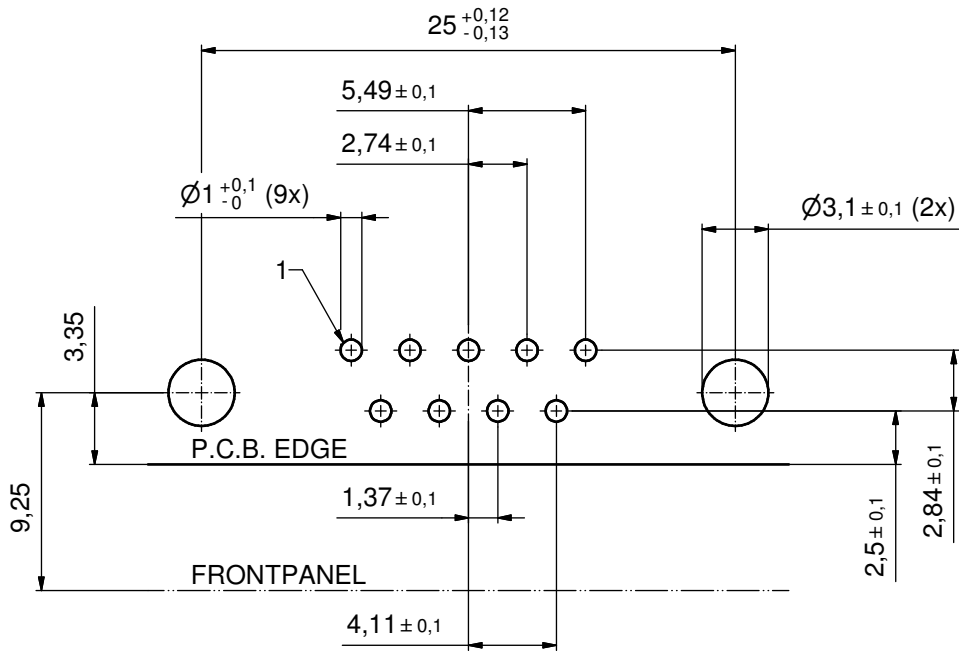


AT ALL TIMES WATER RESISTANT CONNECTORS NOT IN USE SHOULD BE COVERED WITH A CONEC WATER RESISTANT CAP OR WATER TIGHT HOOD.

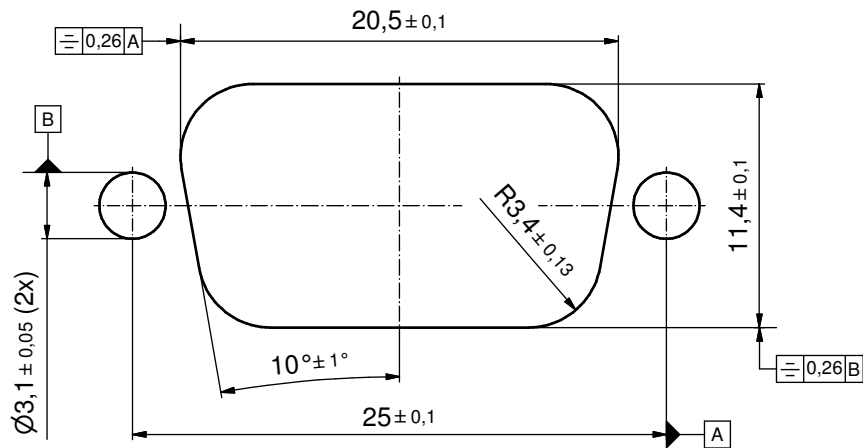
Directive 2002/95/EC RoHS compliant

THIS DRAWING MAY NOT BE COPIED OR REPRODUCED IN ANY WAY, AND MAY NOT BE PASSED ON TO A THIRD PARTY WITHOUT WRITTEN PERMISSION. OWNERSHIP AND COPYRIGHT OF CONEC GmbH DO NOT ALTER CAD DRAWING BY HAND				tolerance		scale: 2:1 (5:1)		
				dim. in mm		material: see notes		
				date	name		title: D-SUB MALE 90° 9pos. SOLDER PIN ANGLED with threaded insert, metal bracket and hex bolt	
				drawn	12.10.12	Henneboel		
				appd.	12.10.12	Fischer		
				norm				
				d-old			dwg no:	
				a	Original			
				rev.	description	date	name	
				CONEC		part no: 15K1A1189		DIN-A3
						part no: 6STD09P□T99S20X (see note 4)		sh: 1/2

P.C.B. HOLE DRILLINGS
(P.C.B. TOP SIDE)



RECOMMENDED PANEL CUT-OUT



THIS DRAWING MAY NOT BE COPIED OR REPRODUCED IN ANY WAY, AND MAY NOT BE PASSED ON TO A THIRD PARTY WITHOUT WRITTEN PERMISSION. OWNERSHIP AND COPYRIGHT OF CONEC GmbH DO NOT ALTER CAD DRAWING BY HAND				tolerance		scale: 4:1
				date	name	material: see sheet 1
				drawn	12.10.12	Henneboel
				appd.	12.10.12	Fischer
				norm		
			d-old			
			CONEC [®]			title: P.C.B. HOLE DRILLINGS PANEL CUT-OUT D-SUB Male 90°9pos. Solder pin angled
rev.	description	date				name
						part no: see sheet 1