

Hybrid motor starter - ELR W3- 24DC/500AC- 2I-BR - 2297109


Please be informed that the data shown in this PDF Document is generated from our Online Catalog. Please find the complete data in the user's documentation. Our General Terms of Use for Downloads are valid (<http://phoenixcontact.com/download>)

Why buy this product

- 22.5 mm wide
- Reduction in wiring
- Long service life
- Space saving



Key Commercial Data

Packing unit	1 STK
GTIN	 4 046356 428347
GTIN	4046356428347

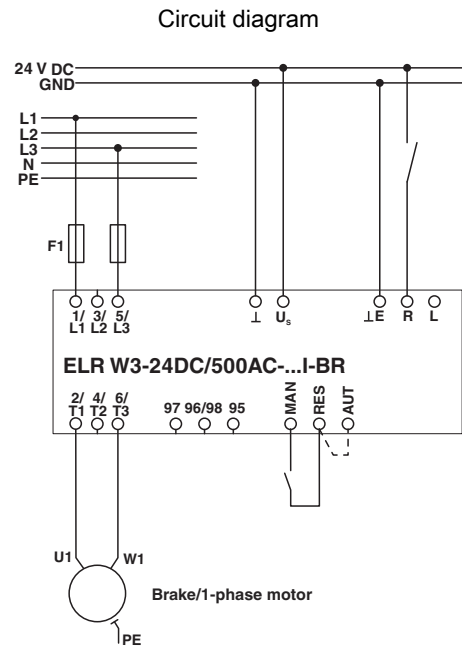
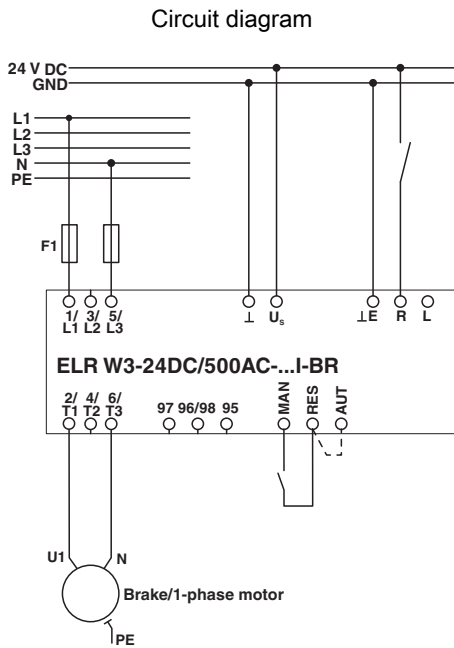
Technical data

Environmental Product Compliance

China RoHS	Environmentally Friendly Use Period = 50
	For details about hazardous substances go to tab "Downloads", Category "Manufacturer's declaration"

Drawings

Hybrid motor starter - ELR W3- 24DC/500AC- 2I-BR - 2297109



Example circuit for the connection of a brake or a 1-phase motor (L1 + N) Example circuit for the connection of a brake or a 1-phase motor (L1 + L3)

Approvals

Approvals

Approvals

EAC / CCC

Ex Approvals

Approval details

EAC		RU C- DE.A*30.B.01082
-----	--	--------------------------

CCC		2016010304900298
-----	--	------------------

Phoenix Contact 2018 © - all rights reserved
<http://www.phoenixcontact.com>

PHOENIX CONTACT GmbH & Co. KG
Flachsmarktstr. 8
32825 Blomberg
Germany
Tel. +49 5235 300
Fax +49 5235 3 41200
<http://www.phoenixcontact.com>