

4

3

2

1

THIS DRAWING IS UNPUBLISHED.

RELEASED FOR PUBLICATION

© COPYRIGHT

ALL RIGHTS RESERVED.

LOC DIST

REVISIONS

P	LTR	DESCRIPTION	DATE	DWN	APVD
	H4	ECR-12-015350	29AUG2012	MY	GB

# REPLACED BY OCEAN STYLE APPLICATOR PART NUMBER 2151059-1


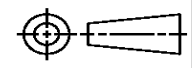
FOR REPLACEMENT PARTS FOR APPLICATOR 1528095 REFER TO ADDITIONAL PAGE(S). SPARE PARTS KIT (IF LISTED) WILL REMAIN AVAILABLE.

THE REPLACEMENT OCEAN STYLE APPLICATOR HAS THE SAME TERMINATOR/PRESS INTERFACE AS APPLICATOR 1528095

Dimensioning and tolerancing per ASME Y14.5M-2009

B

A

THIS DRAWING IS A CONTROLLED DOCUMENT.		DWN M. YOUNGER	 TE Connectivity	
DIMENSIONS:		CHK M. YOUNGER		
		APVD G. BAILEY	NAME FINE ADJ SIDE FD HD-I APPL	
TOLERANCES UNLESS OTHERWISE SPECIFIED:		PRODUCT SPEC	RESTRICTED TO	
0 PLC ± 1 PLC ± 2 PLC ± 3 PLC ± 4 PLC ± ANGLES ±		APPLICATION SPEC	SIZE A3	DRAWING NO C-1528095
MATERIAL	FINISH	WEIGHT	CAGE CODE	SCALE
		CUSTOMER ACCESSIBLE PRODUCTION DRAWING		SHEET 1 OF 5 REV H4

Dimensioning and tolerancing per ASME Y14.5M-2009

PART NUMBER	REV	FIRST USED	TERMINATOR	FEED TYPE	DESCRIPTION
1528095-1	H	-	LEADMAKER	MECH POST FEED	CUTS CARRIER
1528095-2	H	-	BENCH	MECH PRE FEED	CUTS CARRIER
1528095-6	H	-	LEADMAKER	MECH POST FEED	CONTINUOUS CARRIER
7-1528095-1	H	-	LEADMAKER	MECH POST FEED	-1 AND SPARE PARTS
7-1528095-2	H	-	BENCH	MECH PRE FEED	-2 AND SPARE PARTS
7-1528095-6	H	-	LEADMAKER	MECH POST FEED	-6 AND SPARE PARTS
7-1528095-7	G	-	-	-	SPARE PARTS KIT

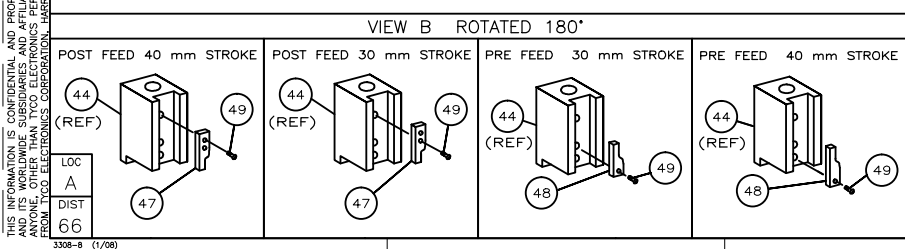
CRIMP DATA (AMP TERMINAL)			
TERMINAL NAME: STANDARD POWER TIMER CONTACT.			
CRIMP	SIZE	TYPE	RANGE
WIRE	2.79 [.110 IN]	F	1.5mm <sup>2</sup> - 2.5mm <sup>2</sup>
INSUL	3.56 [.140 IN]	OV	2.2-3.0 [.087-.118 IN]
WIRE STRIP LENGTH	APPL INSTRUCTION		
3.9-4.5 [.154-.177 IN]	408-8322 & 408-8490		
TERMINAL	114-18388 (B)	-	FEED
APPL SPEC	114-18037 (A)	-	16.0 [.630 IN]

TERMINALS APPLIED			
964326 (A)	-	-	-
1241404 (B)	-	-	-
-	-	-	-
-	-	-	-
-	-	-	-
-	-	-	-
-	-	-	-
-	-	-	-
-	-	-	-
-	-	-	-

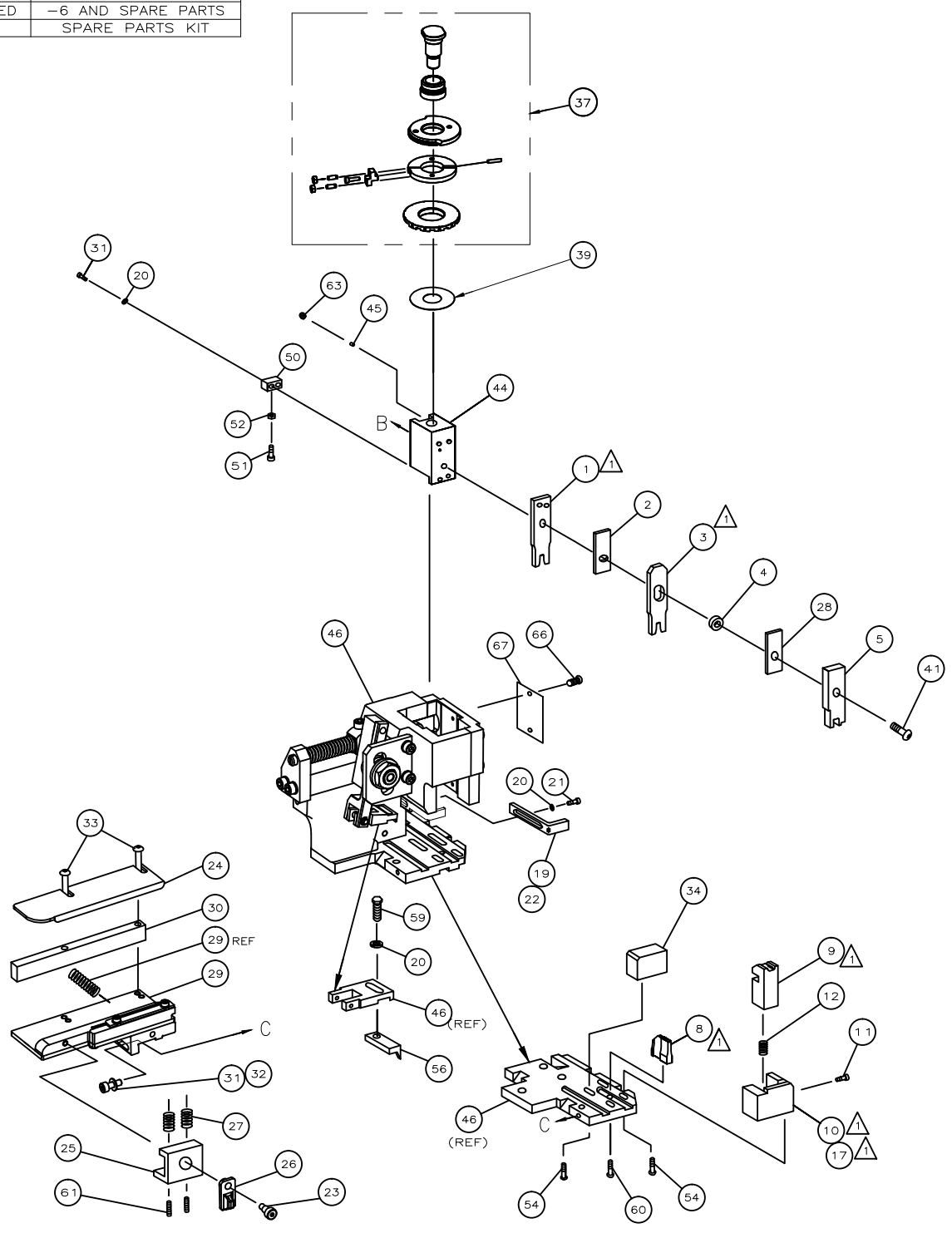
WIRE SIZE mm <sup>2</sup> AWG	CRIMP HEIGHT *	REF SETTING *
2.50mm <sup>2</sup> OR 1.00mm <sup>2</sup> + 1.50mm <sup>2</sup>	2.04 ±0.05 [.080 ±.002 IN]	B4
2.25mm <sup>2</sup>	1.97 ±0.05 [.078 ±.002 IN]	B9
2.00mm <sup>2</sup> OR 14	1.90 ±0.05 [.075 ±.002 IN]	C4
0.75mm <sup>2</sup> + 1.00mm <sup>2</sup>	1.83 ±0.05 [.072 ±.002 IN]	C8
2X18AWG OR 1.50mm <sup>2</sup>	1.76 ±0.05 [.069 ±.002 IN]	D2
0.50mm <sup>2</sup> + 0.75mm <sup>2</sup>	1.67 ±0.05 [.066 ±.002 IN]	D8
16 AWG	1.70 ±0.05 [.067 ±.002 IN]	D6
-	-	-
-	-	-
-	-	-
-	-	-
-	-	-
-	-	-

SET UP GAGE 458637-3	LAYOUT L1426019
-------------------------	--------------------

- 1. RECOMMENDED SPARE PARTS.
- 2. GREASE RAM, CAM, CAM FOLLOWER AND FEED ROD LIGHTLY.
- 3. LUBRICATE DAILY PER THE APPLICATOR INSTRUCTION SHEET SUPPLIED WITH THE APPLICATOR.



**\* WARNING:**  
ON INSTALLATION, SET WIRE DISC TO LARGEST WIRE SIZE SETTING. USE OF SETTINGS BELOW MIN REQ'D CRIMP HEIGHT SETTING WILL CAUSE DAMAGE TO CRIMP TOOLING.



QTY	REQD	PER	ASSY	PART NO	DESCRIPTION	ITEM NO			
-	1	1	1	1	1	1	1528095	PRINT, APPLICATOR LOG SHEET	73
-	1	1	1	1	1	1	1338705-3	DOCUMENTATION PACKAGE	72
-	-	-	-	-	-	-	-	-	71
-	-	-	-	-	-	-	-	-	70
-	-	-	-	-	-	-	-	-	69
-	-	-	-	-	-	-	-	-	68
-	1	1	1	1	1	1	461264-5	PLATE, IDENTIFICATION	67
-	2	2	2	2	2	2	21017-2	SCR,DRIVE(#2x.19)ID PLATE	66
-	-	-	-	-	-	-	-	-	65
-	-	-	-	-	-	-	-	-	64
-	1	1	1	1	1	1	3-18031-0	SCR,SKT SET(M6X6 LW)RAM	63
-	-	-	-	-	-	-	-	-	62
-	2	2	2	2	2	2	2-18032-5	SCR,SET(M5X20)DRAG	61
-	1	1	1	1	1	1	18024-7	SCR,BHC(M4X10)ANVIL	60
-	1	1	1	1	1	1	5-18022-2	SCR,HEX(M4X8)FEED FINGER	59
-	-	-	-	-	-	-	-	-	58
-	-	-	-	-	-	-	-	-	57
-	1	1	1	1	1	1	1338685-1	PAWL, FEED	56
-	-	-	-	-	-	-	-	-	55
-	4	4	4	4	4	4	18024-8	SCR,BHC(M4x12)SHEAR HOLDER	54
-	-	-	-	-	-	-	-	-	53
-	1	1	1	1	1	1	18030-1	NUT,HEX(M3)HOLD DOWN	52
-	1	1	1	1	1	1	811242-5	BUMPER, HOLDDOWN	51
-	1	1	1	1	1	1	690753-2	SPACER, TONKER	50
-	1	1	1	1	1	1	18024-3	SCR,BHC(M3X10)CAM	49
-	-	1	-	-	-	-	1338675-1	CAM, PRE FEED 30 & 40 mm ST	48
-	1	-	1	-	-	-	1338676-1	CAM, POST FEED 30 & 40 mm ST	47
-	1	1	1	1	1	1	1320999-3	APPLICATOR BASIC SUBASSY	46
-	1	1	1	1	1	1	690191-1	PLUG, NYLON	45
-	1	1	1	1	1	1	1338660-1	RAM	44
-	-	-	-	-	-	-	-	-	43
-	-	-	-	-	-	-	-	-	42
-	1	1	1	1	1	1	2-18024-6	SCR,BHC(M8X25)RAM	41
-	-	-	-	-	-	-	-	-	40
-	1	1	1	1	1	1	690125-1	SHIM SUBASSY	39
-	-	-	-	-	-	-	-	-	38
-	1	1	1	1	1	1	879103-2	FINE ADJUST HEAD SUBASSY	37
-	-	-	-	-	-	-	-	-	36
-	-	-	-	-	-	-	-	-	35
-	1	1	1	1	1	1	1-1320934-2	SUPPORT, TERMINAL	34
-	2	2	2	2	2	2	1-18024-0	SCR,BHC(M4X20)STRIP GUIDE	33
-	1	1	1	1	1	1	18027-2	WASHER, FLAT(M4)	32
-	3	3	3	3	3	3	1-18023-2	SCR,SKT CAP(M4X12)MOUNT BLOCK	31
-	1	1	1	1	1	1	1320908-3	SPACER, STRIP GUIDE	30
-	1	1	1	1	1	1	1633073-2	STRIP GUIDE PLATE ASSY	29
-	1	1	1	1	1	1	1-455888-6	SPACER, FRONT SHEAR DEP	28
-	2	2	2	2	2	2	1-22284-0	SPRING, DRAG	27
-	1	1	1	1	1	1	356835-1	LEVER, DRAG RELEASE	26
-	1	1	1	1	1	1	240792-1	DRAG, TERMINAL	25
-	1	1	1	1	1	1	1320928-1	PLATE, STRIP GUIDE	24
-	1	1	1	1	1	1	980371-4	SCR,SHC SHLD	23
-	1	-	1	-	-	-	690472-2	STRIPPER	22
-	1	1	1	1	1	1	1-18023-1	SCR,SHC(M4X10)STRIPPER	21
-	4	4	4	4	4	4	18025-2	WASHER,LOCK(M4)STRIPPER	20
-	-	1	-	-	-	-	690472-1	STRIPPER	19
-	-	-	-	-	-	-	-	-	18
-	1	-	-	-	-	-	1338684-1	HOLDER, SHEAR, FRONT (NO-CUT)	17
-	-	-	-	-	-	-	-	-	16
-	-	-	-	-	-	-	-	-	15
-	-	-	-	-	-	-	-	-	14
-	-	-	-	-	-	-	-	-	13
-	1	1	1	1	1	1	3-22280-3	SPRING, SHEAR	12
-	1	1	1	1	1	1	356885-4	STOP, SHEAR	11
-	-	1	-	-	-	-	1320921-1	HOLDER, SHEAR, FRONT (CUT)	10
-	1	1	1	1	1	1	454276-1	SHEAR, FLOAT (FRONT)	9
-	1	2	2	2	1	1	1333207-2	ANVIL	8
-	-	-	-	-	-	-	-	-	7
-	-	-	-	-	-	-	-	-	6
-	1	1	1	1	1	1	2-455889-0	DEPRESSOR, SHEAR (FRONT)	5
-	1	1	1	1	1	1	2-238011-2	SPACER, BLOCK CRIMPER	4
-	1	2	2	2	1	1	2-318903-2	CRIMPER, INSULATION	3
-	1	1	1	1	1	1	455888-7	SPACER, CRIMPER	2
-	1	2	2	2	1	1	456408-3	CRIMPER, WIRE	1

TECHNICAL SPECIFICATIONS AND DIMENSIONS:

INCHES: 0 PLC ±.0005, 1 PLC ±.0008, 2 PLC ±.0010, 3 PLC ±.0015, 4 PLC ±.0020

TOLERANCES UNLESS OTHERWISE SPECIFIED:

APPROVALS: M. CLIFFORD (DWN), F. BACKHURST (APVD)

SCALE: A1

DRAWING NO: 1528095

SHEET: 1 OF 1

REV: H.3

DATE: FEB 2012

REVISION RECORD: H3 ECR-12-002166

CUSTOMER ACCESSIBLE PRODUCTION DRAWING