

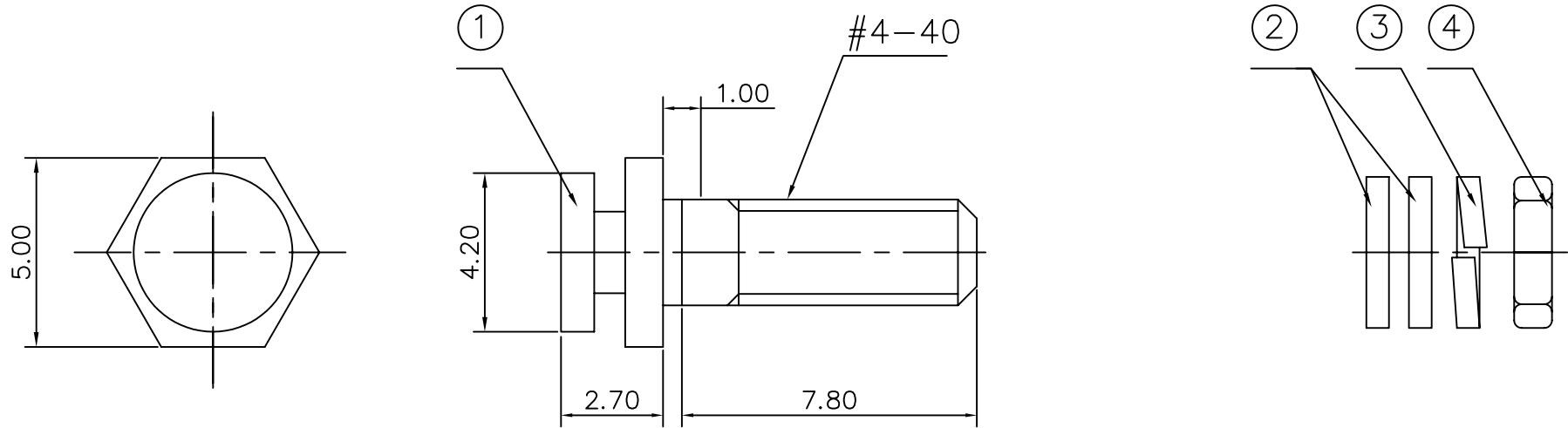
A

B

C

D

E



NOTES:

1. Material:

- ① 10 SCREWS STEEL
- ② 20 WASHER STEEL
- ③ 10 LOCK WASHER STEEL
- ④ 10 NUT STEEL

2. Finish :Bright Tinned plating. over nickel.

3. 1P/N= 10 Lockings  
locking are necessary for one connector

4. Marking:

Amphenol L17D  
Made in China  
P/N: L17D53018X



Amphenol Socapex		TOL. GEN. : +/-0.30							
		VOLUME:							
		AREA:							
		PLATING:							
SERIES		TREATMENT:							
NUMBER SERIES		MATERIAL:							
	Screw	FILE:		CUSTOMER	MODIFICATIONS	DRAW	DATE	APPROVE	IND.
DATE	2006.06.16	DESIGNATION	HEX LOCKING SCREW	INTERNAL PART NUMBER			L17D53018X		