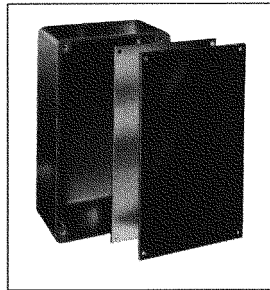


INSTRUMENTATION CASES & KNOBS *Designers' Choice*

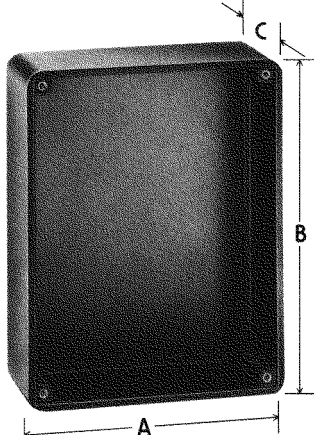


PHENOLIC INSTRUMENT CASES

CHOICE OF 8 SIZES • STURDY CONSTRUCTION • FLUSH MOUNTING PANELS



Aluminum or Phenolic Panels Available



SPECIFICATIONS

Phenolic Cases: .125 Wall Thickness, Molded Glossy Black Phenolic, MIL-M-14, CFG

Phenolic Panels: .062 Thick Glossy Black Phenolic, MIL-P-3115C

Aluminum Panels: .062 Thick, #5052-H34 per QQ 318 C; Bright finished surface with pressure sensitive protective covering tape.

Screw Length: .312 for 4-40 screw; .375 for 6-32 screw.

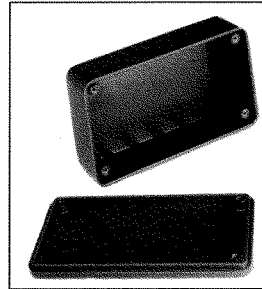
PHENOLIC CASE CAT. NO.	A DIM	B DIM	C DIM	THREAD SIZE AND TYPE	PHENOLIC PANEL CAT. NO.	ALUMINUM PANEL CAT. NO.
715	2.500	3.500	1.250	4-40 TAPPED	2050	2051
703	2.875	4.000	1.562	4-40 TAPPED	2042	2044
705	2.875	4.000	1.562	USE #4 SELF TAPPING SCREW	2042	2044
704	3.125	5.875	2.250	4-40 TAPPED	2043	2045
700	3.750	6.250	2.000	6-32 BRASS INSERT	*2037	2046
716	4.250	5.000	1.750	6-32 BRASS INSERT	*2052	2053
701	5.250	6.812	2.312	6-32 BRASS INSERT	*2038	2047
702	7.375	8.375	3.000	6-32 BRASS INSERT	*2039	2048

*.093 Thick

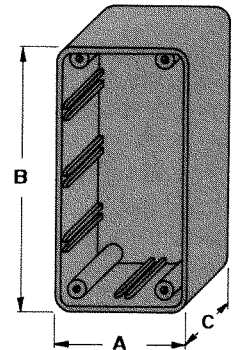
PLASTIC INSTRUMENT CASES

LOW COST • CHOICE OF 7 SIZES • STURDY CONSTRUCTION
Economic cases molded of high impact material. Mating cover has interlocking flange on lid, countersunk holes for flush mounting. Internal grooved guides to hold PC boards and circuit cards from .062 to .093 thick.

IDEAL FOR PROTOTYPE OR PRODUCTION USAGE



Cases supplied with cover and mounting screws



CASE & COVER CAT. NO.	A DIM	B DIM	C DIM	MATERIAL
760	2.000	4.000	.812	Blue Styrene
761	2.437	4.375	1.062	Blue Styrene
762	2.500	4.750	1.400	Blue Styrene
706	2.875	4.000	1.562	Black ABS
763	3.150	6.000	1.840	Blue Styrene
707	3.750	6.250	2.000	Black ABS
764	4.330	7.500	2.220	Blue Styrene

INSTRUMENTATION KNOBS

SKIRTED ROUND

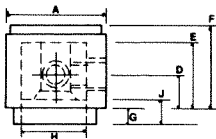


FIG NO. 1

ROUND WITH DIAL

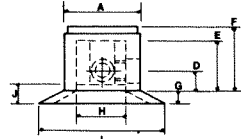


FIG NO. 2

DOUBLE BAR

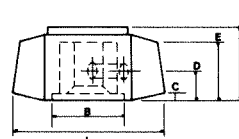


FIG NO. 3

SINGLE BAR

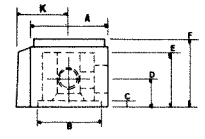


FIG NO. 4

CAT. NO. WITH INDICATOR	FIG NO.	KNOB DIA.	SHAFT DIA.	TWO (2) SET SCREWS	ROUND TYPE NUT CLEARANCE		C MIN	D MAX	HOLE DEPTH		F +/- .030	G +/- .030	SKIRTED & DIAL NUT CLEARANCE		K +/- .025/- .005	L MAX
					A +/- .025/- .005	B MIN			E MIN	F			H MIN	J MIN		
8554	1	.500	.125	4-40	.505	-	-	.158	.405	.510	.150	.360	.177	-	-	
8555	1	.700	.250	4-40	.700	-	-	.187	.405	.510	.170	.485	.188	-	-	
8556	1	.900	.250	8-32	.905	-	-	.260	.520	.790	.220	.640	.320	-	-	
8557	1	1.250	.250	8-32	1.250	-	-	.250	.455	.700	.150	.750	.250	-	-	
8558	2	.500	.125	4-40	.505	-	-	.158	.405	.510	.150	.360	.177	-	.900	
8559	2	.700	.250	4-40	.700	-	-	.187	.405	.610	.170	.485	.188	-	1.150	
8560	2	.900	.250	8-32	.905	-	-	.260	.520	.790	.220	.640	.320	-	1.525	
8561	2	1.250	.250	8-32	1.250	-	-	.250	.455	.700	.150	.750	.250	-	1.837	
8565	3	.700	.250	4-40	-	.485	.026	.187	.405	.610	-	-	-	-	1.150	
8566	3	.900	.250	8-32	-	.640	.114	.260	.520	.790	-	-	-	-	1.525	
8567	4	.500	.125	4-40	.505	.435	.026	.158	.405	.510	-	-	-	.350	-	
8568	4	.700	.250	4-40	.700	.485	.026	.187	.405	.610	-	-	-	.460	-	
8569	4	.900	.250	8-32	.905	.640	.114	.260	.520	.790	-	-	-	.590	-	

MATERIAL: ABS with Aluminum Inlay