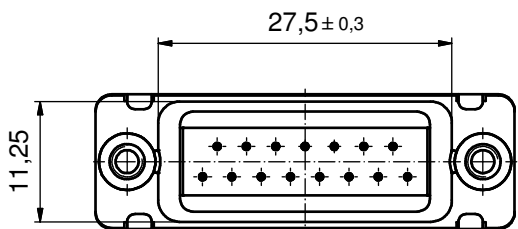
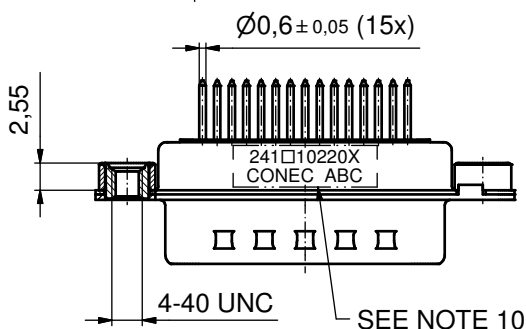
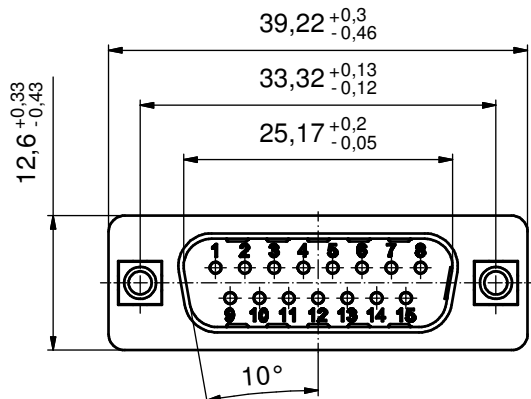
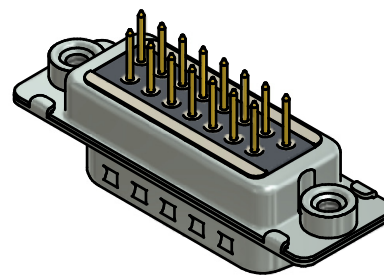
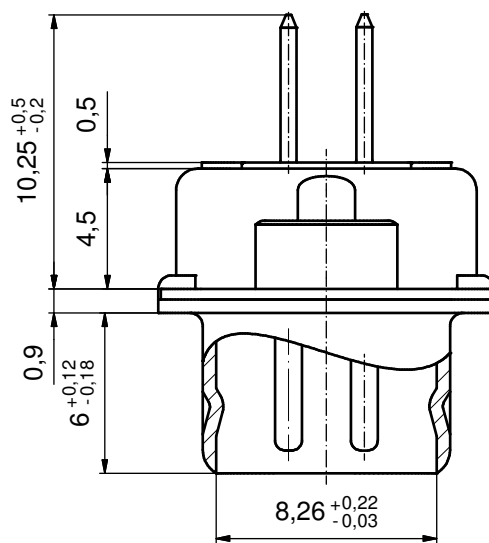


P.C.B. HOLE DRILLINGS
(P.C.B. TOP SIDE)

(5 : 1)



NOTES:

- FOR WAVESOLDERING (SOLDER BATH TEMPERATURE 260 °C FOR 5 SEC. AND SOLDER PREHEAT 100 °C FOR 30 SEC.)
- METALSHELLS: STEEL; min. 315µin TIN over 40-80µin NICKEL
- INSULATOR: HIGH TEMPERATURE PLASTIC UL 94 V-0, BLACK
- CONTACTS: COPPER ALLOY; PLATING (SEE PART NO.):
 PLEASE ADD A for GOLD FLASH over NICKEL (PREFERRED TYPE)
 PLEASE ADD B for 20µin HARD GOLD over min. 50µin NICKEL
 PLEASE ADD C for 30µin HARD GOLD over min. 50µin NICKEL
 CONTACTS TAILS PRETINNED
- THREADED INSERTS: COPPER ALLOY; min. 200µin TIN over 80µin NICKEL
- COLLARS: COPPER ALLOY; min 200µin TIN over 80µin NICKEL
- DIELECTRIC WITHSTANDING VOLTAGE: 424 VDC
- CAPACITANCE: 830pF ± 20%
- MAXIMUM TORQUE VALUE FOR THREAD: 6 in. LB
- CONNECTOR IS PART MARKED: 241□10220X CONEC ABC (see note 4)

Directive 2002/95/EC RoHS compliant

THIS DRAWING MAY NOT BE COPIED OR REPRODUCED IN ANY WAY, AND MAY NOT BE PASSED ON TO A THIRD PARTY WITHOUT WRITTEN PERMISSION. OWNERSHIP AND COPYRIGHT OF CONEC GmbH

DO NOT ALTER CAD DRAWING BY HAND

| | | | | |
|-------------|----------|--------------|------------|--|
| tolerance | | | dim. in mm | |
| date | name | | | |
| drawn | 29.10.13 | Henneboel | | |
| appd. | 30.10.13 | Lehmenkühler | | |
| norm | | | | |
| d-old | | | | |
| rev. | a | Original | | |
| description | | | | |
| date | | | | |
| name | | | | |



| | | | |
|---|--|-------------------------|--|
| scale: | | 2:1 (5:1) | |
| material: | | SEE NOTES | |
| title: | | | |
| D-SUB FILTER MALE 15pos. SOLDER PIN STRAIGHT with threaded insert | | | |
| dwg no: | | 24K1A1471 | |
| | | DIN-A3 | |
| | | sh: 1 | |
| part no: | | 241□10220X (see note 4) | |