

4

3

2

1

THIS DRAWING IS UNPUBLISHED.

RELEASED FOR PUBLICATION

20

LOC

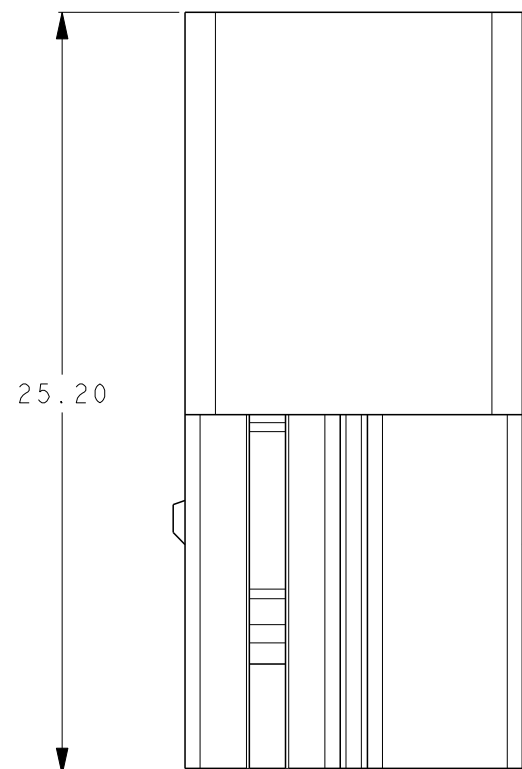
DIST

REVISIONS

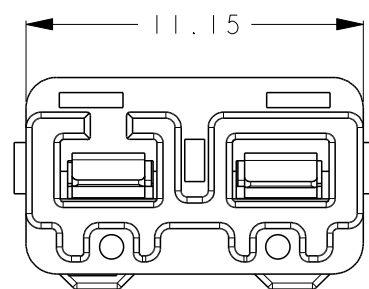
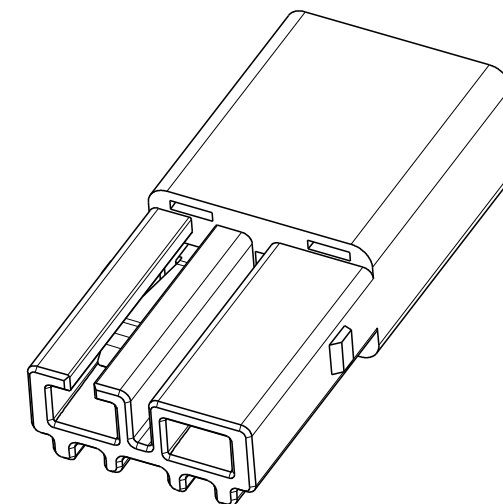
© COPYRIGHT 20

ALL RIGHTS RESERVED.

P	LTR	DESCRIPTION	DATE	DWN	APVD
	A2	UDPATE PACKAGING INFORMATION	25JUN2014	M.S	X.X
	A3	NOTE 5, 6	05DEC2014	M.S	X.X
	A4	ADD NEW PN	14OCT2015	M.S	X.X
	B	ECR-16-007582	01JUN2016	M.S	X.X

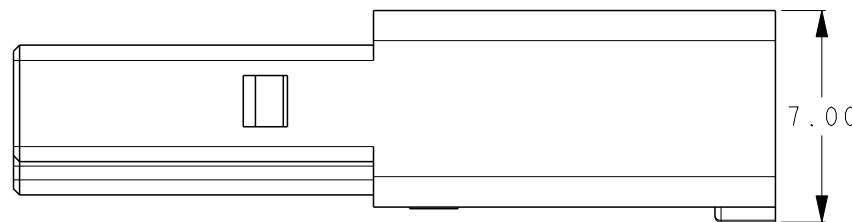


25.20

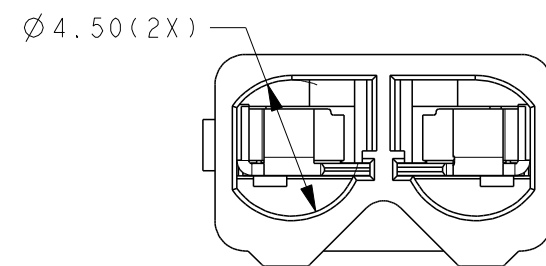


11.15

SCALE 4:1



7.00



Ø4.50(2X)

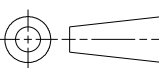
PART NUMBER	PART COLOR
2271180-1	ORANGE
2271180-2	BLACK
2271180-3	WHITE (NATURAL)

NOTES:

- 1. TE PART NUMBER: SEE TABLE.
- 2. MATERIAL: COPPER ALLOY.
- 3. HOUSING : NYLON, UL 94-V0. COLOR: ORANGE.
- 4. FINISH: TERMINAL : TIN PLATING OVERALL.
- 5. APPLICABLE MATING RECEPTACLE: 2271183 SERIES.
- 6. APPLICABLE WIRE: AWG18-22 SOLID OR TIN DIPPED STRANDED. (16 STRANDS MAX. FOR 18 AWG, 7 STRANDS MAX FOR 20-22 AWG. SEE RELATED APPLICATION SPECIFICATION AND PRODUCT SPECIFICATION)
- 7. STRIP LENGTH: 9.0-9.6mm.
- 8. PRODUCT COMPLIES TO UL 2459 REQUIREMENT AND QUALIFIED: ZMNA.E308110 ; ZMNA7.E308110

THIS DRAWING IS A CONTROLLED DOCUMENT.		DWN	18DEC2013	<b>STE</b> TE Connectivity
		CHK	SHI MING 18DEC2013	
		APVD	XU XIANG 18DEC2013	
		NAME	XU XIANG	
DIMENSIONS: mm		PRODUCT SPEC	108-137020	PLUG 2 PIN WIRE TO WIRE CONNECTOR
TOLERANCES UNLESS OTHERWISE SPECIFIED: ± 0.5		APPLICATION SPEC	114-137020	
MATERIAL		WEIGHT	1.74g	RESTRICTED TO
FINISH		A300779C-2271180		-
CUSTOMER DRAWING		SCALE	4:1	SHEET 1 OF 3
				REV B

DIMENSIONS:	TOLERANCES UNLESS OTHERWISE SPECIFIED:
mm	± 0.5
0-PLC	±
1-PLC	±
2-PLC	±
3-PLC	±
4-PLC	±
ANGLES	±5°



D

C

B

A

4

3

2

1

THIS DRAWING IS UNPUBLISHED.

RELEASED FOR PUBLICATION

20

© COPYRIGHT 20

ALL RIGHTS RESERVED.

LOC  
ES

DIST

REVISIONS

P	LTR	DESCRIPTION	DATE	DWN	APVD

MATED WITH RECEPTACLE

Technical drawing of a 2-pin wire-to-wire connector. The drawing includes side and front views with the following dimensions:

- Overall length: 40.00 REF
- Height of the main body: 13.30 REF
- Height of the bottom section: 7.75 REF

The side view shows the connector with two pins and a locking mechanism. The front view shows the connector's profile. The text "SOLID 18-22AWG STE" is printed on the side of the connector.

Cross-sectional view of the connector showing the internal wiring and contact details. The width of the connector is 7.75 REF.

3D perspective view of the connector showing the locking mechanism and pin details. The text "STE 18-22AWG SOLID" is visible on the side of the connector.

THIS DRAWING IS A CONTROLLED DOCUMENT.

DWN SHI MING 18DEC2013

CHK XU XIANG 18DEC2013

APVD XU XIANG 18DEC2013

PRODUCT SPEC -

APPLICATION SPEC -

WEIGHT -

CUSTOMER DRAWING

DIMENSIONS:  
mm

TOLERANCES UNLESS OTHERWISE SPECIFIED:  
± 0.50

0-PLC ±

1-PLC ±

2-PLC ±

3-PLC ±

4-PLC ±

ANGLES ±5°

MATERIAL -

FINISH -

TE Connectivity

NAME  
PLUG  
2 PIN WIRE TO WIRE CONNECTOR

SIZE CAGE CODE DRAWING NO RESTRICTED TO

A 300779 C-2271180 -

SCALE 4:1 SHEET 2 OF 3 REV B

1470-19 (3/11)

4

3

2

1

THIS DRAWING IS UNPUBLISHED.

RELEASED FOR PUBLICATION

20

© COPYRIGHT 20

ALL RIGHTS RESERVED.

LOC	DIST	REVISIONS					
		P	LTR	DESCRIPTION	DATE	DWN	APVD
ES							

2271180-X

PLASTIC BAG

CARTON

NOTE:  
1. PACKAGING QUANTITY: SEE TABLE.

PARTS PER BAG	BAGS PER CARTON	PARTS PER CARTON
500 PCS	8	4000 PCS

THIS DRAWING IS A CONTROLLED DOCUMENT.

DWN 18DEC2013

SHI MING

CHK 18DEC2013

XU XIANG

APVD 18DEC2013

XU XIANG

PRODUCT SPEC

-

APPLICATION SPEC

-

WEIGHT

-

DIMENSIONS:

mm

TOLERANCES UNLESS OTHERWISE SPECIFIED:

0 PLC	±	
1 PLC	±10	
2 PLC	±5.0	
3 PLC	±	
4 PLC	±	
ANGLES		±5°

MATERIAL

-

FINISH

-

DWN 18DEC2013

SHI MING

CHK 18DEC2013

XU XIANG

APVD 18DEC2013

XU XIANG

PRODUCT SPEC

-

APPLICATION SPEC

-

WEIGHT

-

TE Connectivity

NAME

PLUG  
2 PIN WIRE TO WIRE CONNECTOR

SIZE

CAGE CODE

DRAWING NO

RESTRICTED TO

A300779C-2271180

-

CUSTOMER DRAWING

SCALE 4:1

SHEET 3 OF 3

REV B

1470-19 (3/11)