

**PLEASE CHECK WWW.MOLEX.COM FOR LATEST PART INFORMATION**

**Part Number:** [63445-2343](#)

**Status:** **Active**

**Description:** Anvil

**Documents:**

[RoHS Certificate of Compliance \(PDF\)](#)

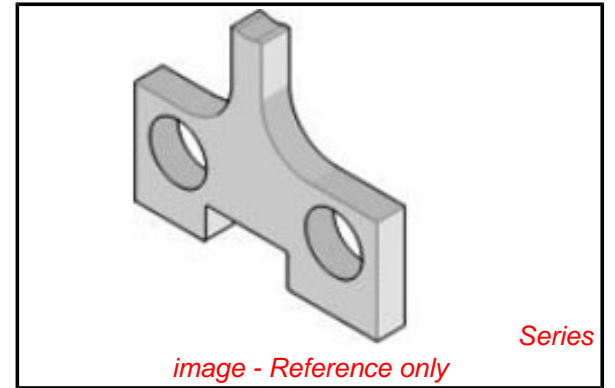
**General**

Product Family	Application Tooling
Series	<a href="#">T2504</a>
Comments	See Tooling Specification (PDF) Above
Function	Cutter
Geographic Area	Global
Level of Automation	Semi-Automatic
More Detailed Tech Information	<a href="mailto:applicationtooling@molex.com">applicationtooling@molex.com</a>
Product Name	N/A
Survey	<a href="http://www.molex.com//review/apptool_survey.html">www.molex.com//review/apptool_survey.html</a>
Tool Type	Anvil
UPC	822348676934

**Material Info**

**Reference - Drawing Numbers**

Application Tooling Documents ATS-STANDARD-PARTS



**EU RoHS**

**ELV and RoHS  
Compliant**

**REACH SVHC**

Not Reviewed

**Low-Halogen Status**

Not Reviewed

**China RoHS**



**Need more information on product  
environmental compliance?**

Email [productcompliance@molex.com](mailto:productcompliance@molex.com)  
For a multiple part number RoHS Certificate of  
Compliance, [click here](#)

Please visit the [Contact Us](#) section for any  
non-product compliance questions.

**Search Parts in this Series**

[T2504Series](#)

**Use With**

63856-3000 , 63856-3070 , 63856-3100 ,  
63856-3170 , 63866-3000 , 63866-3070 ,  
63866-3100 , 63866-3170 , 63900-9800 ,  
63900-9870 , 63900-9900 , 63900-9970 ,  
63910-9800 , 63910-9870 , 63910-9900 ,  
63910-9970