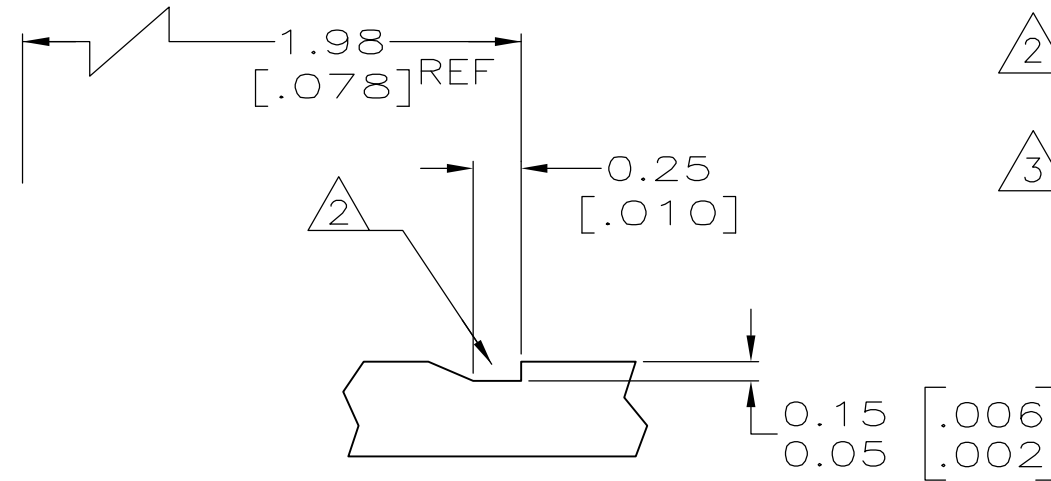
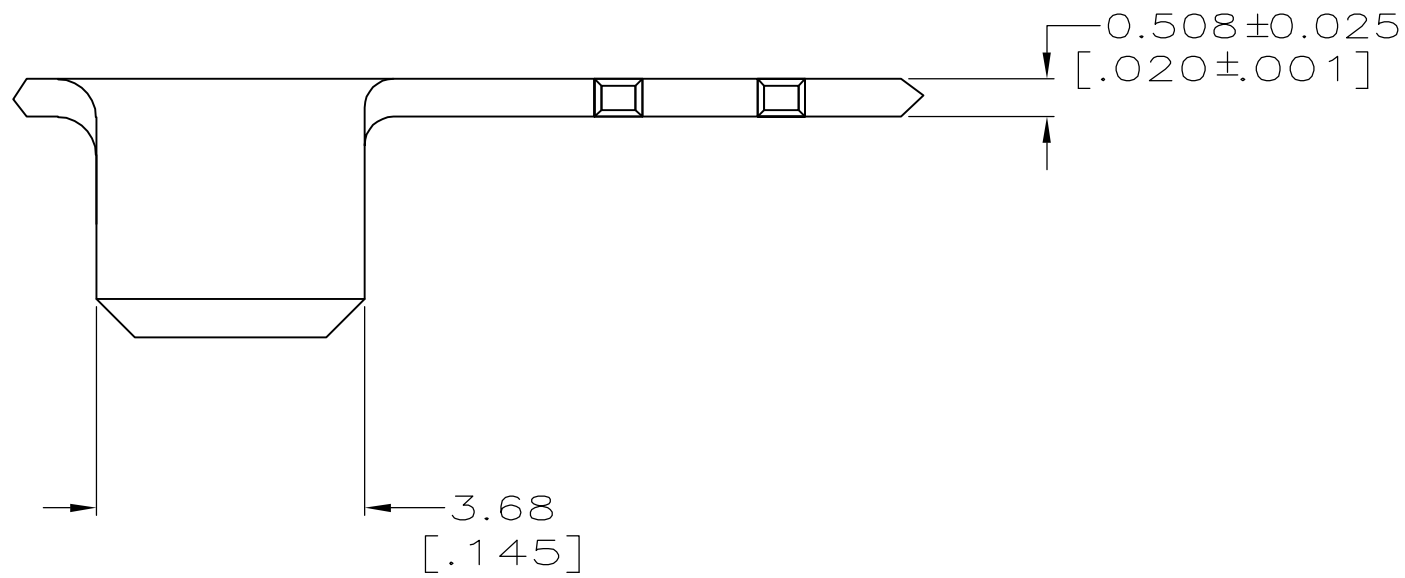


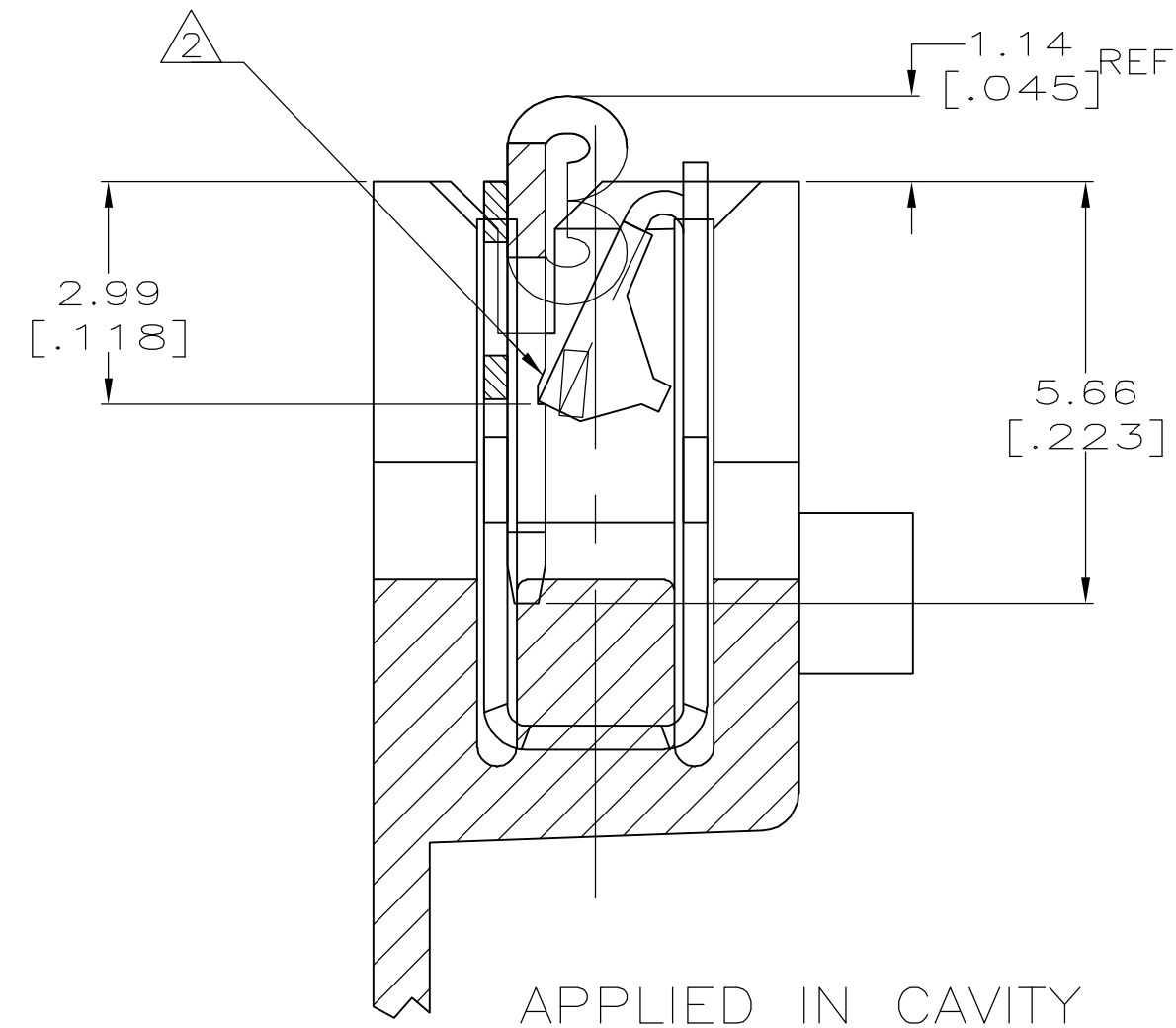
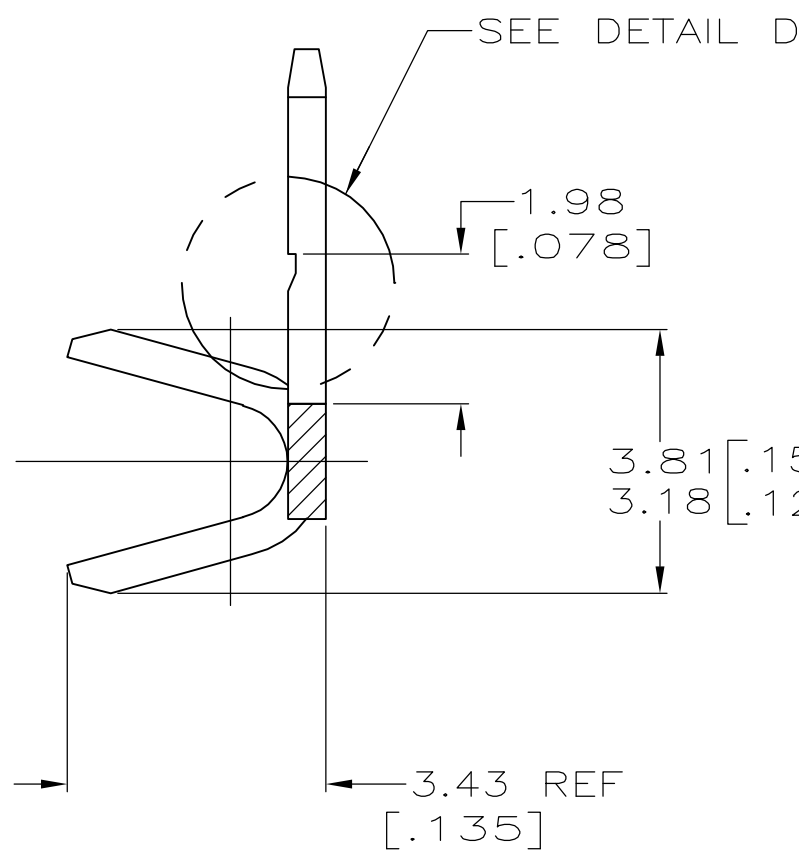
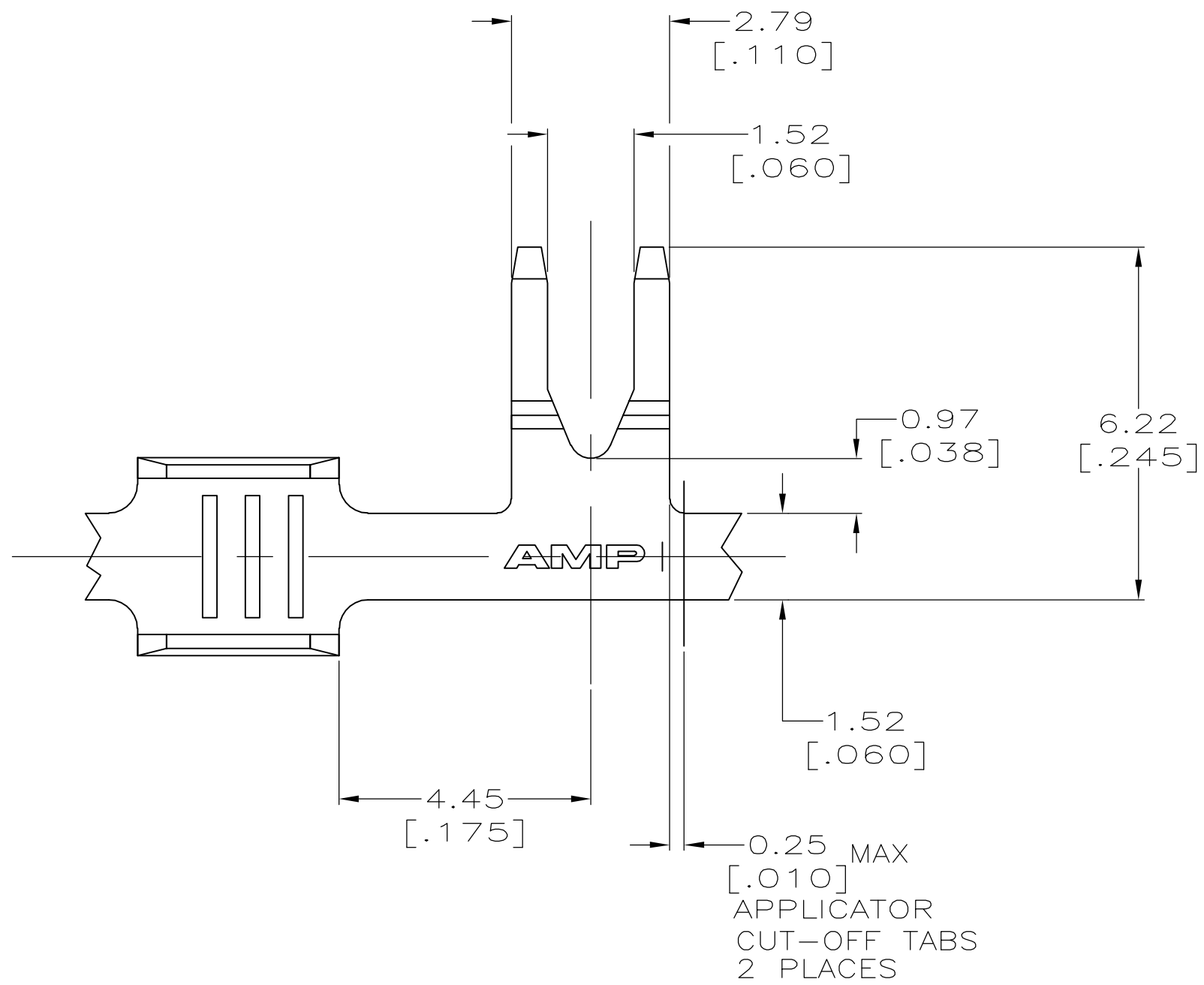
THIS DRAWING IS UNPUBLISHED. RELEASED FOR PUBLICATION
 © COPYRIGHT BY TYCO ELECTRONICS CORPORATION. ALL RIGHTS RESERVED.

LOC	DIST	REVISIONS			
P	LTR	DESCRIPTION	DATE	DWN	APVD
AF	50	D1	REVISED PER ECR-05-015249	29NOV05	MF KR

- 1 CONTINUOUS STRIP ON REELS.
- 2 FOR OPTIMUM RETENTION IN POKE-IN MAG-MATE TERMINALS, THE SERRATION, MUST BE ENGAGED WITH THE EDGE OF THE LEAF.
- 3 PRE-PRODUCTION - F.A.S.R. REQUIRED.



D DETAIL
 SCALE 25:1
 ROTATED 90° CW



4.32 [.170]	F	2.79 [.110]	1.75 [.069]	1.3mm ² [16]
STRIP LENGTH ±0.38 [±.015]	TYPE	WIDTH	±.051 [±.002]	0.8mm ² [18]
			HEIGHT	WIRE
WIRE BARREL CRIMP				

REVERSE	0.5-1.4mm ² [#20-#16] AWG	3 1217406-2
STANDARD	0.5-1.4mm ² [#20-#16] AWG	1217406-1
REELING	WIRE RANGE	PART NUMBER

THIS DRAWING IS A CONTROLLED DOCUMENT.

DIMENSIONS: mm [INCHES]	TOLERANCES UNLESS OTHERWISE SPECIFIED: 0 PLC ± - 1 PLC ± - 2 PLC ± 0.25[.010] 3 PLC ± - 4 PLC ± - ANGLES ± -	DWN MICHAEL S. FEHER 08MAY2000 CHK KURT A. RANDOLPH 08MAY2000 APVD KURT A. RANDOLPH 08MAY2000	tyco Electronics Tyco Electronics Corporation Harrisburg, PA 17105-3608
MATERIAL 082 BRASS	FINISH 0.002032 [.000080] MIN TIN	PRODUCT SPEC 108-22045 APPLICATION SPEC 114-2060	NAME TAB, RIGHT ANGLE, POKE-IN, MAG-MATE
CUSTOMER DRAWING		WEIGHT -	SIZE A2
SCALE 10:1		DRAWING NO C=1217406	RESTRICTED TO -
SHEET 1 of 1		REV D1	