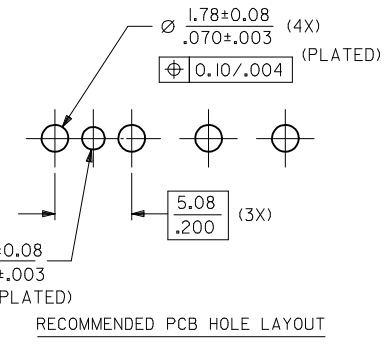
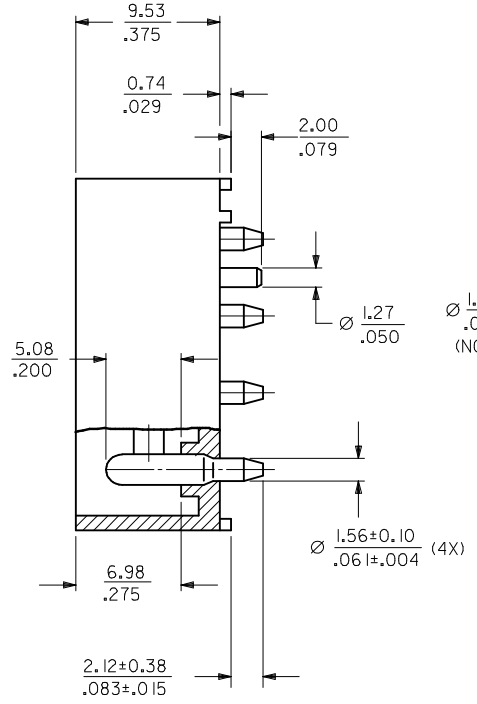
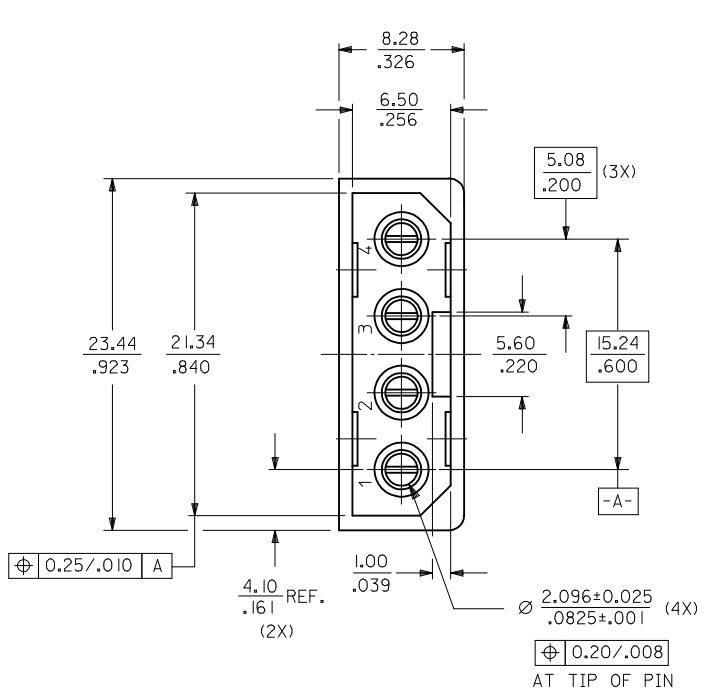


MAT'L NO.	ENG NO.
15-24-4742	A-8981-4V6-LF



- NOTES :
1. PLATING  
POSTPLATE 0.00254/.000100 MIN. TIN  
OVER 0.00127/.000050 MIN. NICKEL OVERALL.
  2. PART TO MATE WITH HOUSING 8981-4P2  
AND TERMINAL 8980-3\*.
  3. PRODUCT SPEC PS-8981-4V4/4R1-P APPLIES.
  4. MATERIAL:  
HOUSING - PCT, GLASS FILLED, UL94V-0  
COLOR BLACK  
TERMINAL - PHOS BRONZE

ADD CKT INDICATION EC NO: S2009-0836 DRWN:SKANG CHKD:ATSEE APPR:MLONG	2009/05/08 2009/05/08 2009/05/11	DESCRIPTION REV	QUALITY SYMBOLS	GENERAL TOLERANCES (UNLESS SPECIFIED)	DIMENSION STYLE	SCALE	DESIGN UNITS	THIRD ANGLE PROJECTION
			$\nabla=0$ $\sphericalangle=0$	mm INCH	MM/IN	NTS	METRIC	
			4 PLACES ± --- ± --- 3 PLACES ± --- ± .008 2 PLACES ± 0.20 ± --- 1 PLACE ± --- ± --- ANGULAR ± 3 °	DRAWN BY SKTOH CHECKED BY GWANG APPROVED BY RWONG	DATE 1991/10/17 DATE 1991/11/14 DATE 1991/11/14	TITLE POWER CONNECTOR, 4 CKTS VERTICAL MOUNT		
			DRAFT WHERE APPLICABLE MUST REMAIN WITHIN DIMENSIONS	MATERIAL NO. SEE TABLE	DOCUMENT NO. SD-8981-4V6	SHEET NO. 1 OF 1		