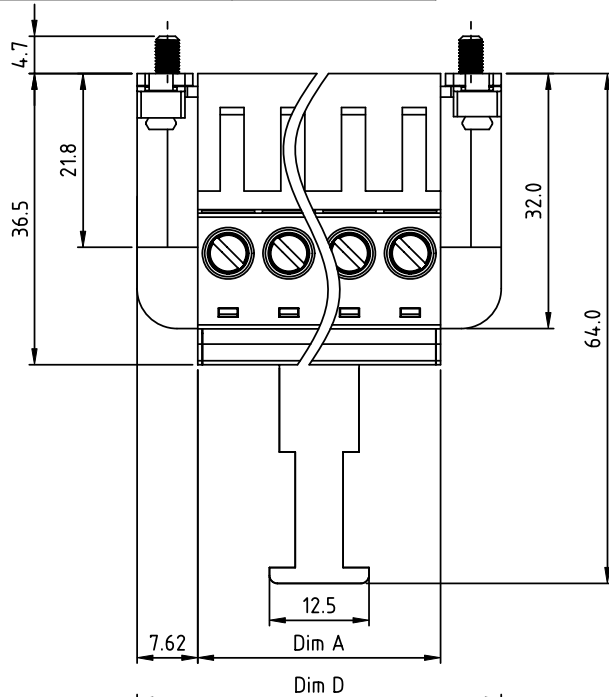


PRODUCT NUMBER	PITCH
KTxx01x500J0G	7.62 mm



N=Number of poles

Dim A	N×7.62
Dim B	(N-1)×7.62
Dim C	(N+1)×7.62
Dim D	(N+2)×7.62

Dimension

Poles	Tolerance
3P	±0.20
4P	

PART NO.: KT xx 01 x 5 00J0 G

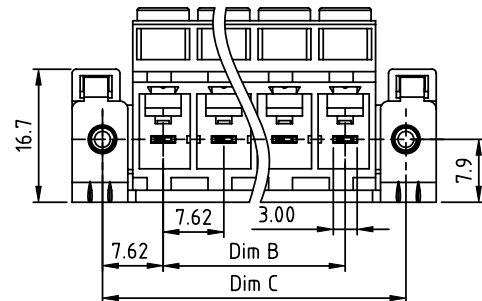
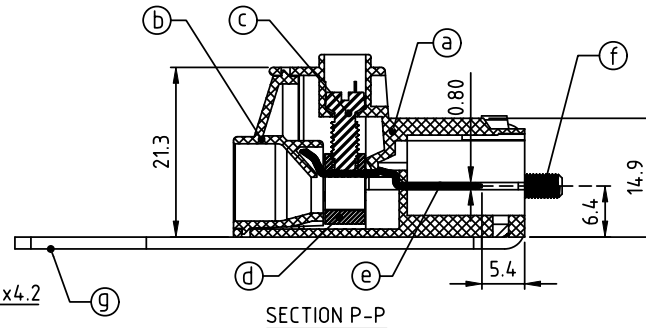
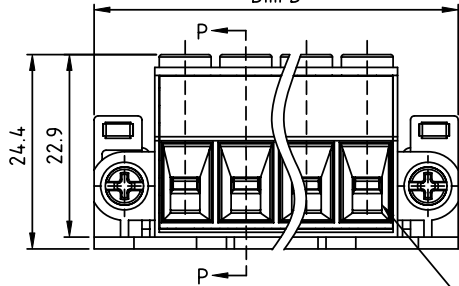
Solid block	0	Black (RAL9005)	RoHS compliant (lead<4%) In copper Alloy
No. of poles	2	Red (RAL3001/D)	
03	3	Orange(RAL2011/P)	
04	4	Yellow(RAL1018/A)	
	5	Green(RAL6018/T)	
	6	Blue (RAL5015/A)	
	8	Grey(RAL7035/D)	
	9	White(RAL1102)	
	C	Green(RAL6018/U)	

Material:

- Item①Terminal(housing) : Thermoplastic (UL94V-0)
- Item②Terminal(cover) : Thermoplastic (UL94V-0) (ET 7.62)
- Item③Terminal screw : Steel Zinc plating " - " slot type (ET 7.62)
- Item④Clamp : Brass, Ni plated (ET 7.62)
- Item⑤Female contact : Copper. Tin plated
- Item⑥ With flange screw : Steel "+/-" combination type, Zinc plating M3 (ET 7.62)
- Item⑦Handle: Steel t=1.50mm zinc plated.

Electrical cULus

- Voltage rating: 600VAC
- Current rating: 41A
- Solid wire (AWG): 8-24
- Stranded wire(AWG): 8-24
- Torque: 9.0 Lb-In
- Screw: M3.5
- Wire strip length: 10-11mm
- Withstanding Voltage: 1.6KV
- Operating temperature: -40°C to +115°C
- Safety Approval:



mat'l. code		surface ASME Y14.5	tolerance ASME Y14.5	projection	product family	
ltr ecn no dr date		tolerances unless otherwise specified			TERMINAL BLOCK	
		angles	X.±0.5	MM	title	
		X*±1"	X.X±0.3		TERMINAL BLOCK	
			X.XX±0.1	scale	PLUGGABLE PLUG,FLANGE WITH SCREW,WITH HANDLE	
		dr	EVIN ZHONG 050614		sheet 1 of 1 size	
		enr	EVIN ZHONG 050614		KTxx01x500J0G	A4
		chr	HANKE FENG 050614			
		appd	SHI JUN 050614		type	CUSTOMER Drawing
sheet index	revision sheet	A	1			