

FIGURE 2
VIEW FROM BASE END
CCW ROTATION

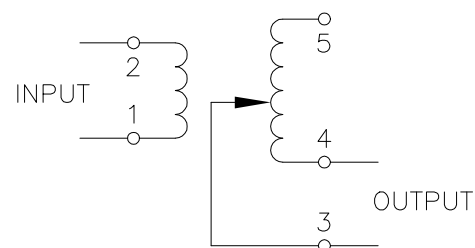


FIGURE 3
VIEW FROM BASE END
CCW ROTATION

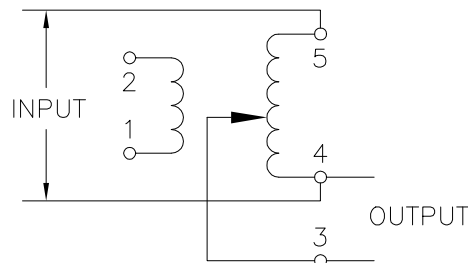


FIGURE 4
VIEW FROM BASE END
CCW ROTATION
RATED 2 AMP @ 260V
INCREASING TO 4.5 AMP @ 120V

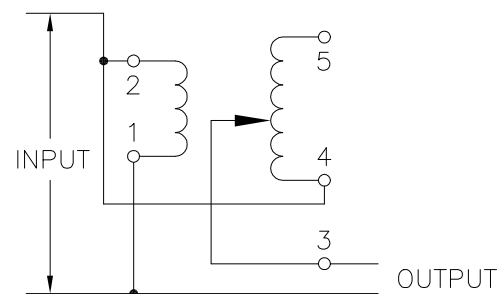
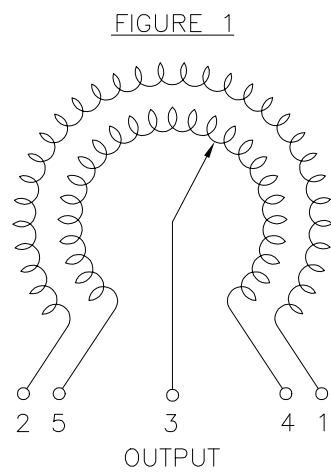
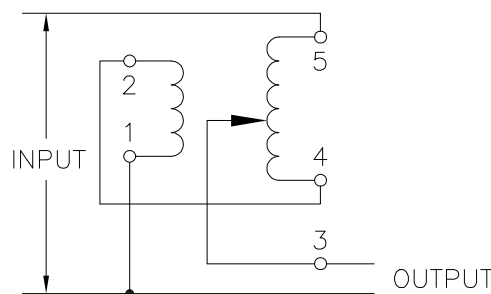


FIGURE 5
VIEW FROM BASE END
CCW ROTATION



SPECIFICATIONS										
SCHEMATIC	WIRING	INPUT		OUTPUT		SHAFT ROTATION TO INCREASE VOLTAGE	TERMINAL CONNECTIONS			
		VOLTS	HERTZ	VOLTS	CONSTANT CURRENT LOAD		FOR INCREASING VOLTAGE AS VIEWED FROM BASE END			
					MAX. AMPS	MAX. KVA		INPUT	JUMPER	OUTPUT
FIGURE 2	ISOLATED	120	50/60	0-140	2	0.28	CW	1-2	---	5-3
FIGURE 3	NON-ISOLATED			0-120	5	0.60	CCW	1-2	---	4-3
FIGURE 4	VOLTAGE DOUBLER	120-260		4.5	0.52	CW	1-2	1-5	2-3	
FIGURE 5	SERIES	240		110-240	4.5	1.08	CCW	1-2	2-4	1-3
							CW	1-5	1-5	2-3
							CCW	1-5	2-4	1-3

UNLESS OTHERWISE SPECIFIED, TOLERANCE IS ±		UNITS		TITLE: SPEC. CONTROL DRAWING	
DECIMALS	HOLES	ANGLES	DRAFT	SPEC. CONTROL DRAWING	
.XX	.0005-.002	1°	1-1/2°	SPEC. CONTROL DRAWING	
MATERIAL:		ALL DIMENSIONS APPLY AFTER PLATING		MODEL: J201B	
DRAWN BY S.A. SMITH		DATE 9/26/97	FIRST USED ON	DO NOT SCALE DWG.	
CHECKER	DATE	WEIGHT APPROX. 8.5 LBS	CAGE CODE 83008	DWG. NO. 031-8843	
ENGINEER	DATE	SCALE 1=1	SHEET 1 OF 1	DWG. SIZE D	