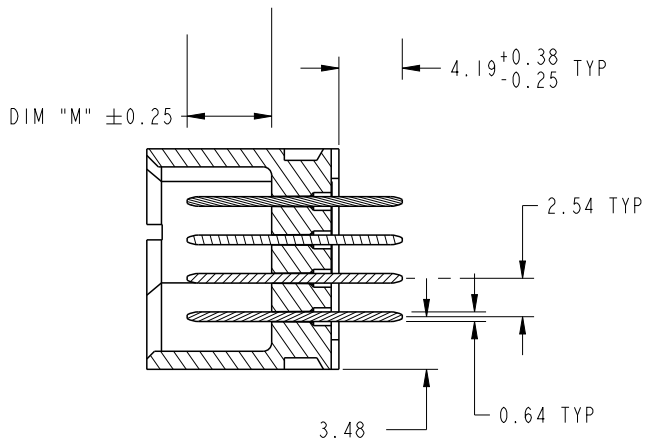


CODE	DIM "M" MATING LENGTH	CONTACT TYPE
J	[5.59]	SIGNAL
F	[6.86]	SIGNAL

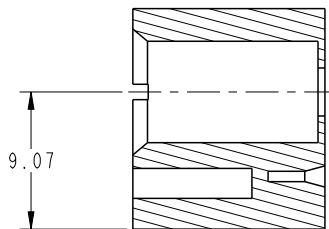
spec ref	See Notes			dr	Sky Chen	2012/12/10	projection	MM	size	A4	scale	1:1
tolerance std	TOLERANCES UNLESS OTHERWISE SPECIFIED			eng	Sky Chen	2012/12/20			ecn no	-		
See Notes				chr	-	-						
surface	linear	0.X	±0.50	appr	Pei-Ming Zheng	2012/12/20	product family	PwrBlade	rel level	Released		
		0.XX	±0.25				title	124S	dwg no	51952-236	rev	A
		0.XXX	±0.10									
	angular	0°	±2°									

PRODUCT NUMBER

51952-236--  
NOTE 3



SECTION A-A  
SCALE 2:1



SECTION C-C  
SCALE 2:1

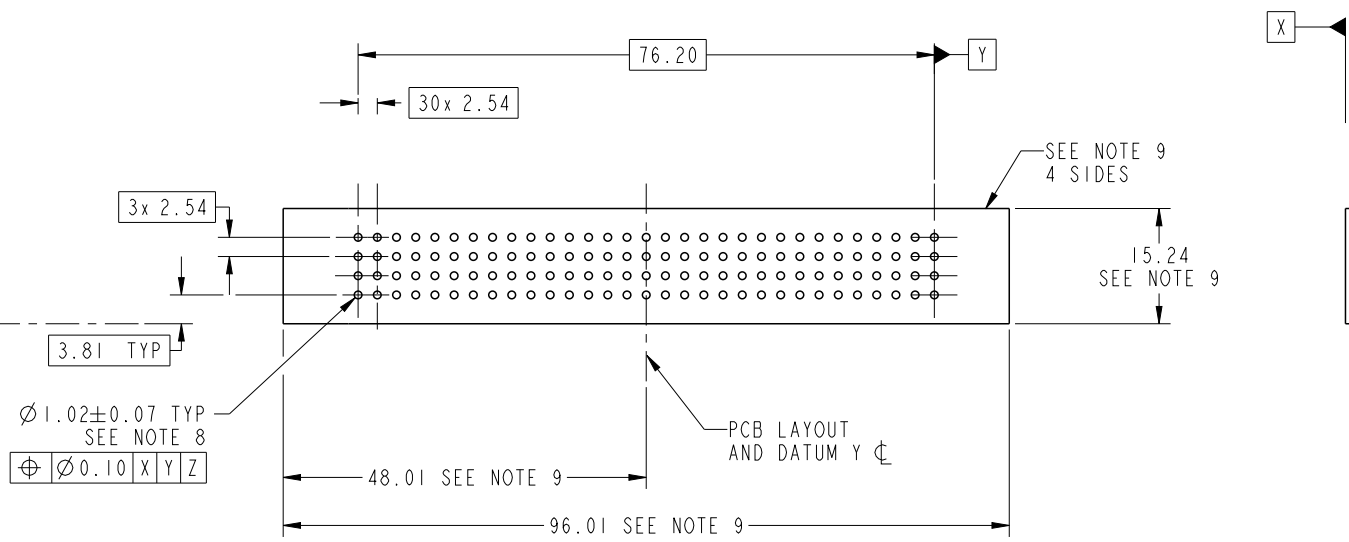
dr	Sky Chen	2012/12/10	projection 	MM 	size	A4	scale	1:1
eng	Sky Chen	2012/12/20			ecn no	-		
chr	-	-			rel level	Released		
appr	Pei-Ming Zheng	2012/12/20	product family	PwrBlade	rev	A		
		title	124S VERTICAL STB HEADER		dwg no	51952-236		
www.fci.com		cat. no.	Product - Customer Drw			sheet 2 of 4		



Copyright FCI.

PRODUCT NUMBER

51952-236--  
NOTE 3



RECOMMENDED PCB LAYOUT

dr	Sky Chen	2012/12/10	projection 	MM 	size	A4	scale	1:1		
eng	Sky Chen	2012/12/20			ecn no	-				
chr	-	-			product family	PwrBlade	rel level	Released		
appr	Pei-Ming Zheng	2012/12/20	www.fci.com		title	124S VERTICAL STB HEADER	dwg no	51952-236	rev	A
cat. no.		Product - Customer Drw			sheet 3 of 4					



Copyright FCI.

PRODUCT NUMBER

51952-236\_\_  
NOTE 3

NOTES:

1. DIMENSIONS AND TOLERANCES ARE IN ACCORDANCE WITH ASME Y14.5M, 1994 UNLESS OTHERWISE SPECIFIED.

CONNECTOR NOTES:

- ② HOUSING MATERIAL: UL 94 V-0 GLASS FILLED HIGH-TEMP THERMOPLASTIC  
SIGNAL PIN MATERIAL: COPPER ALLOY
- 3. SEE ITEM 1 & 2 IN PRINT 10064183 FOR PLATING SPEC OF 51952-236 AND 51952-236LF RESPECTIVELY.

④ MANUFACTURER'S NAME, DATE CODE AND OPTIONAL P/N TO APPEAR ON THIS SURFACE. THE MARK CAN BE OMITTED IF THERE IS NOT ENOUGH SPACE ON THIS SURFACE.

5. PRODUCT SPECIFICATION GS-12-149.  
APPLICATION SPECIFICATION BUS-20-067.

6. PACKAGED IN TRAYS.

PCB NOTES:

7. ALL HOLE DIAMETERS ARE FINISHED HOLE SIZE.

8.  $\varnothing 1.151 \pm 0.025$  DRILLED HOLES PLATED WITH 0.008 MIN SnPb OR Sn OVER .001 [0.03] TO 0.08 Cu PLATING TO ACHIEVE  $\varnothing 1.02 \pm 0.07$  HOLE.

9. CONNECTOR KEEP-OUT ZONE.



Copyright FCI.

dr	Sky Chen	2012/12/10	projection 	MM 	size	A4	scale	1:1	
eng	Sky Chen	2012/12/20			ecn no	-			
chr	-	-							
appr	Pei-Ming Zheng	2012/12/20	product family	PwrBlade	rel level	Released			
		title	124S VERTICAL STB HEADER		dwg no	51952-236		rev	A
www.fci.com		cat. no.	Product - Customer Drw			sheet 4 of 4			