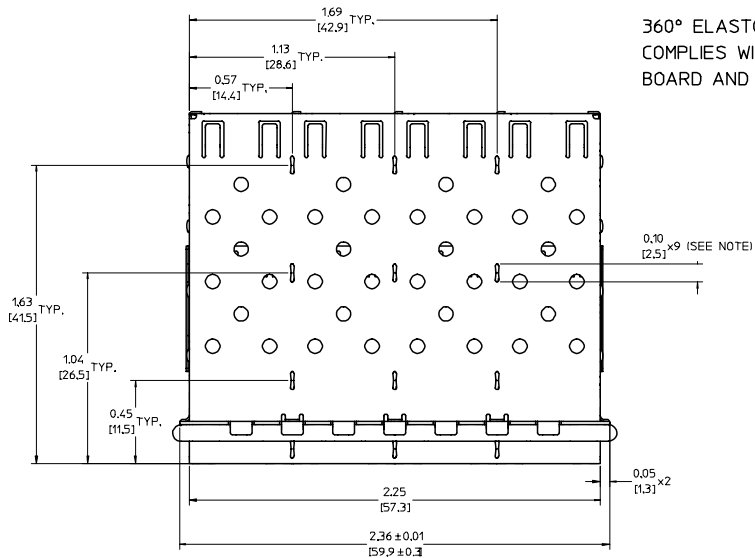


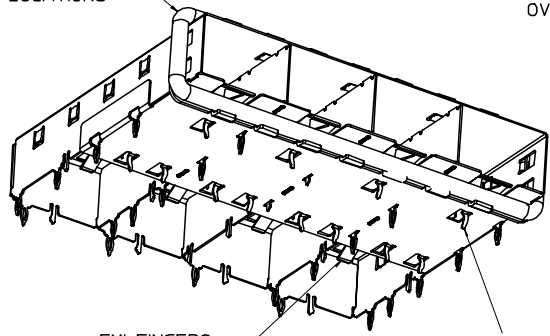
L
K
J
I
H
G
F
E
D
C
B
A

L
K
J
I
H
G
F
E
D
C
B
A

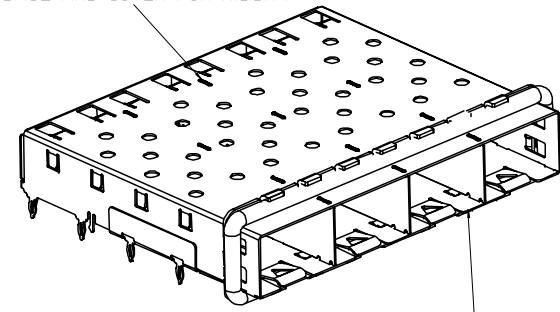


360° ELASTOMER GASKET COMPLIES WITH (SFP) MSA BOARD AND BEZEL LOCATIONS

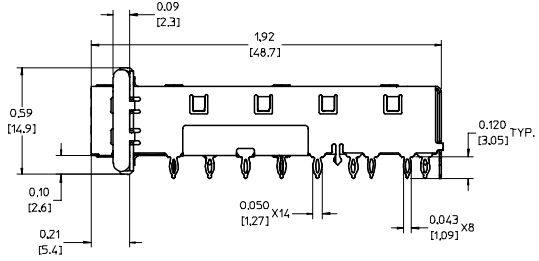
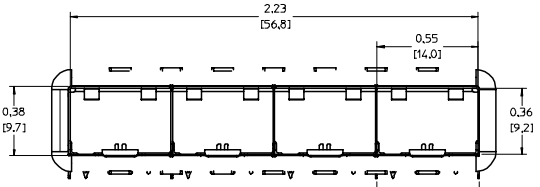
INNER WALL TABS ARE COINED OVER BASE AND COVER FOR RIGIDITY



EMI FINGERS CONTACT ADAPTER
12 UNDER BELLY EMI PINS



DIMENSIONS OF EACH INNER CAGE DESIGNED TO FUNCTION WITH SMALL FORM-FACTOR PLUGGABLE (SFP) TRANSCEIVER



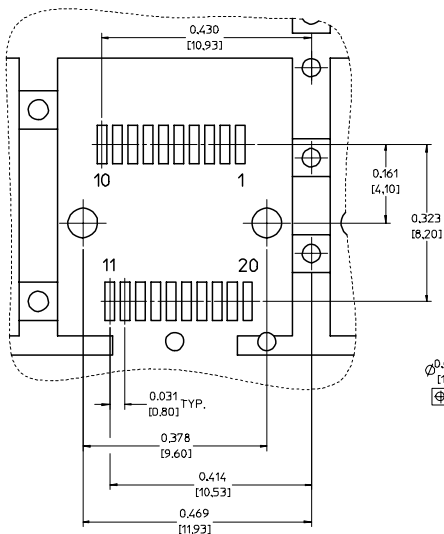
- NOTES:
- PRESS FIT LEGS 0.120" LONG- 0.062 [1.57] MINIMUM PCB THICKNESS. FOR SINGLE SIDED USE ONLY.
 - MATERIAL: COPPER ALLOY
PLATING: NONE
 - NOTE: A PRE-PLATED NICKEL VERSION IS AVAILABLE. REFER TO DOCUMENT SD-74728-420
 - REFERENCE DOCUMENTS:
PRODUCT SPECIFICATION: PS-74728-000
COSMETIC SPECIFICATIONS: WI-HP-7-2774 AND WI-HPA-7-0093
TEST SUMMARY: TS-74728-0415
 - MATES WITH SERIES 74728. LIGHT PIPE COVER ASSEMBLY.
 - THIS PART MEETS THE RESTRICTION OF HAZARDOUS SUBSTANCES IN ELECTRICAL AND ELECTRONIC EQUIPMENT (ROHS) DIRECTIVE (2002/95/EC).

EC NO: USY2006-0225 DRW:KSIMONSO06/01/24 CHKD:BRUSSELL2006/01/24 APPR:BRUSSELL2006/01/25 B REV DESCRIPTION	QUALITY SYMBOLS	GENERAL TOLERANCES (UNLESS SPECIFIED)	SCALE 3:1	DESIGN UNITS METRIC	THIRD ANGLE PROJECTION	REVISE ON CAD ONLY
	▽.0	4 PLACES ± --- ± --- 3 PLACES ± --- ± .005 2 PLACES ± 0.13 ± .01 1 PLACE ± 0.25 ± ---	mm INCH	DIMENSION STYLE IN/MM	TITLE 1X4 SFP CAGE ASSEMBLY, FRAME W/ TABS, W/ 0.090 OD GASKET	
	∇.0	ANGULAR ± 1°	DRAFT WHERE APPLICABLE MUST REMAIN WITHIN DIMENSIONS	DRAWN BY KSIMONSO DATE 2005/04/07 CHECKED BY BRUSSELL DATE 2005/04/07 APPROVED BY BRUSSELL DATE 2005/04/07	MATERIAL NO. 747280417 DOCUMENT NO. SD-74728-417	SHEET NO. 1 OF 4
	THIS DRAWING CONTAINS INFORMATION THAT IS PROPRIETARY TO MOLEX INCORPORATED AND SHOULD NOT BE USED WITHOUT WRITTEN PERMISSION		MOLEX INCORPORATED Molex logo			

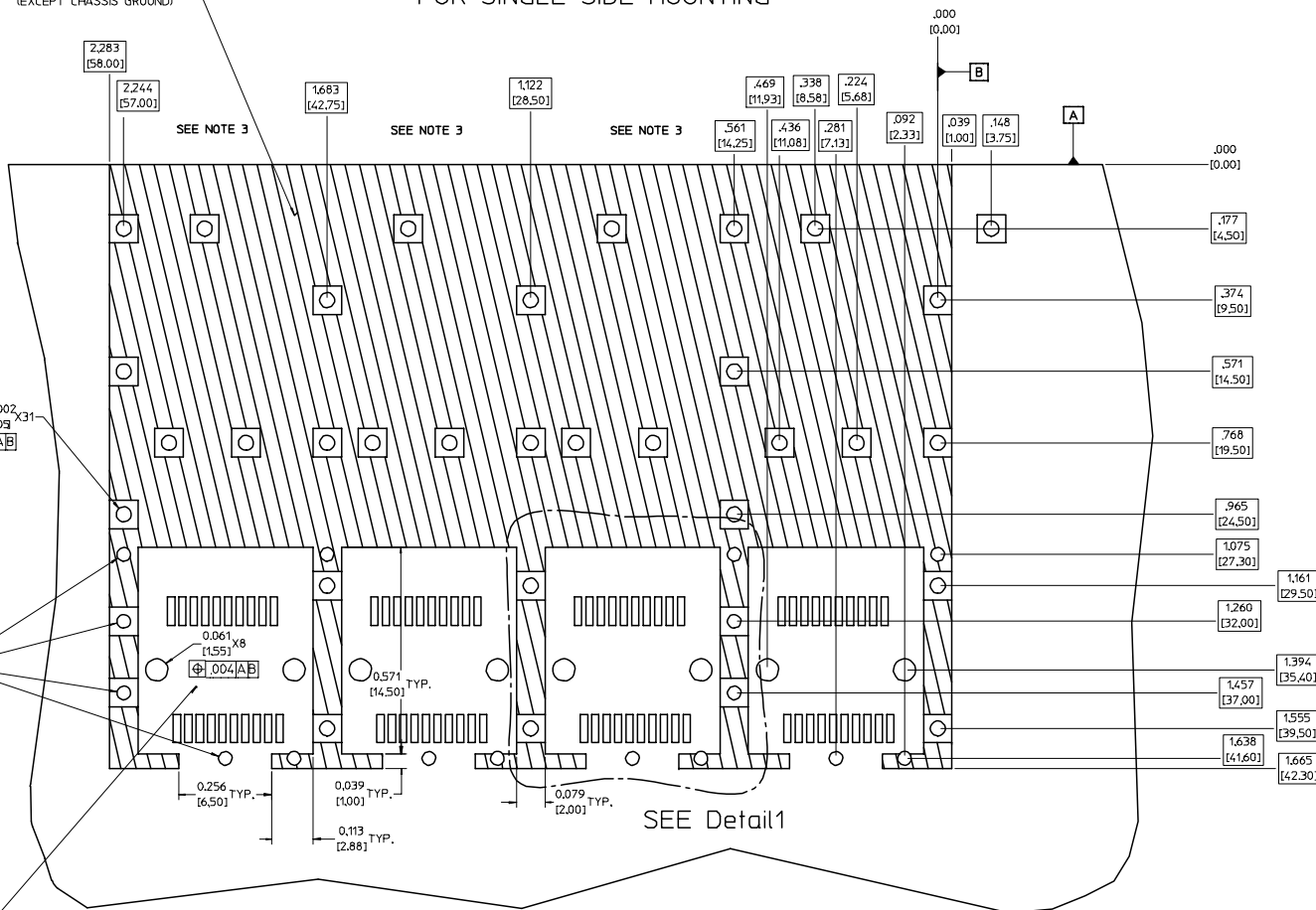
20 19 18 17 16 15 14 13 12 11 10 9 8 7 6 5 4 3 2 1

PCB LAYOUT FOR SINGLE SIDE MOUNTING

Detail1
SCALE 8:1



CROSS-HATCHED AREA DENOTES
COMPONENT AND TRACE KEEP-OUT
(EXCEPT CHASSIS GROUND)



SMALLER HOLE ON
THESE FOUR ROWS ONLY

THIS AREA DENOTES
COMPONENT KEEP-OUT
(TRACES ALLOWED)

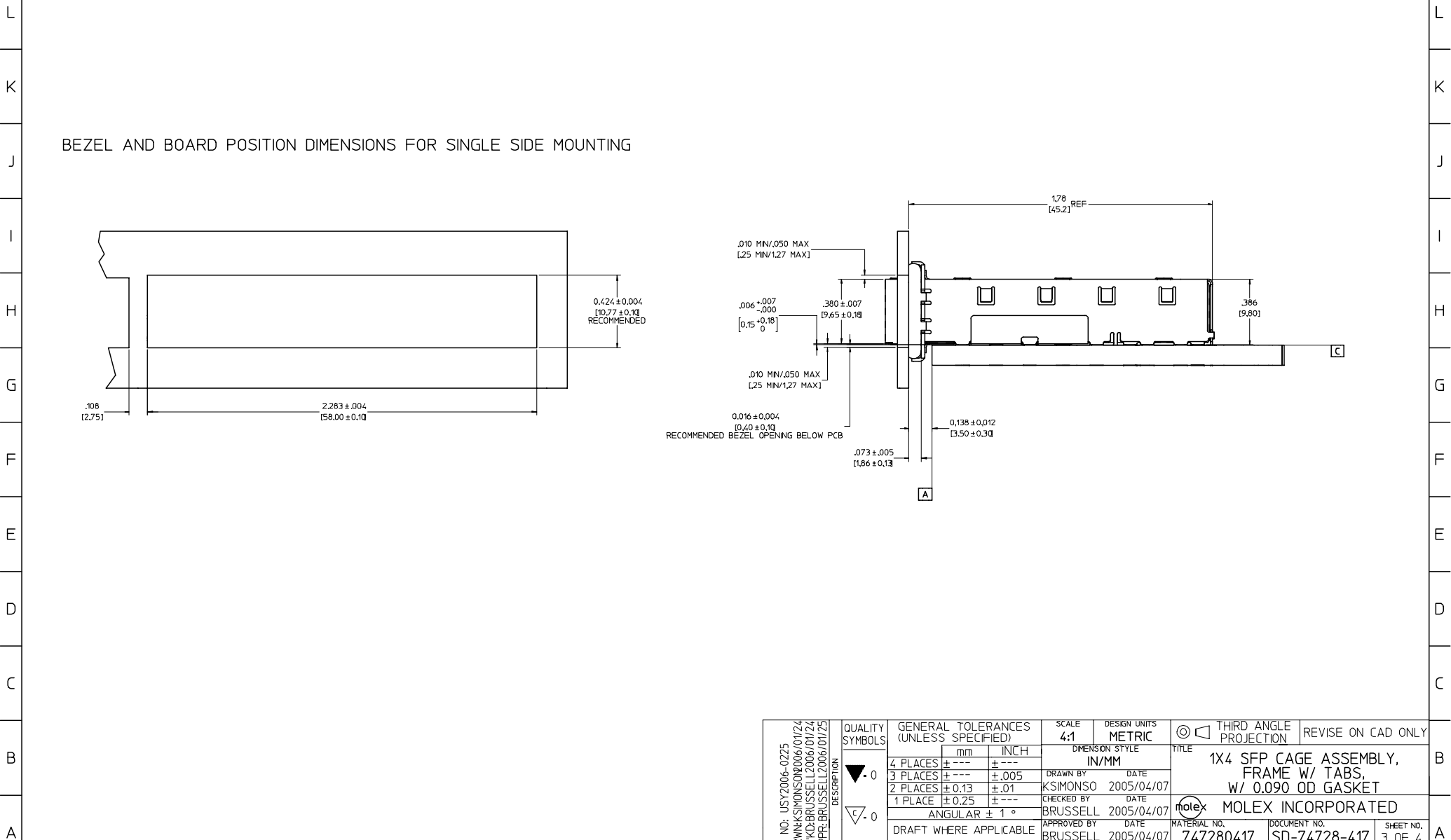
NOTES:

1. PADS AND VIAS GO TO CHASSIS GROUND, (34 PLACES).
RECOMMENDED PADS TO BE 2mm SQUARE.
2. PLATING OPTIONAL FOR THROUGH HOLES, (12 PLACES).
3. HOLE PATTERN REPEATS FOR EACH PORT,
SPACING BETWEEN PORTS IS 14.25mm.

EC NO: USY2006-0225 DRW:KSIMONSON06/01/24 CHK:D.BRUSSELL2006/01/24 APPR:R.BRUSSELL2006/01/25	QUALITY SYMBOLS	GENERAL TOLERANCES (UNLESS SPECIFIED)	SCALE 6:1	DESIGN UNITS METRIC	THIRD ANGLE PROJECTION	REVISE ON CAD ONLY
	▼ 0	4 PLACES ± --- ± --- 3 PLACES ± --- ± .005	DIMENSION STYLE IN/MM	DRAWN BY KSIMONSON	DATE 2005/04/07	TITLE 1X4 SFP CAGE ASSEMBLY, FRAME W/ TABS, W/ 0.090 OD GASKET
	▽ 0	2 PLACES ± 0.13 ± .01 1 PLACE ± 0.25 ± ---	ANGULAR ± 1 °	CHECKED BY BRUSSELL	DATE 2005/04/07	MOLEX INCORPORATED
		DRAFT WHERE APPLICABLE MUST REMAIN WITHIN DIMENSIONS	APPROVED BY BRUSSELL	DATE 2005/04/07	MATERIAL NO. 747280417	DOCUMENT NO. SD-74728-417
THIS DRAWING CONTAINS INFORMATION THAT IS PROPRIETARY TO MOLEX INCORPORATED AND SHOULD NOT BE USED WITHOUT WRITTEN PERMISSION						

19 18 17 16 15 14 13 12 11 10 9 8 7 6 5 4 3 2 1

20 19 18 17 16 15 14 13 12 11 74728 9 8 7 6 5 4 3 2 1

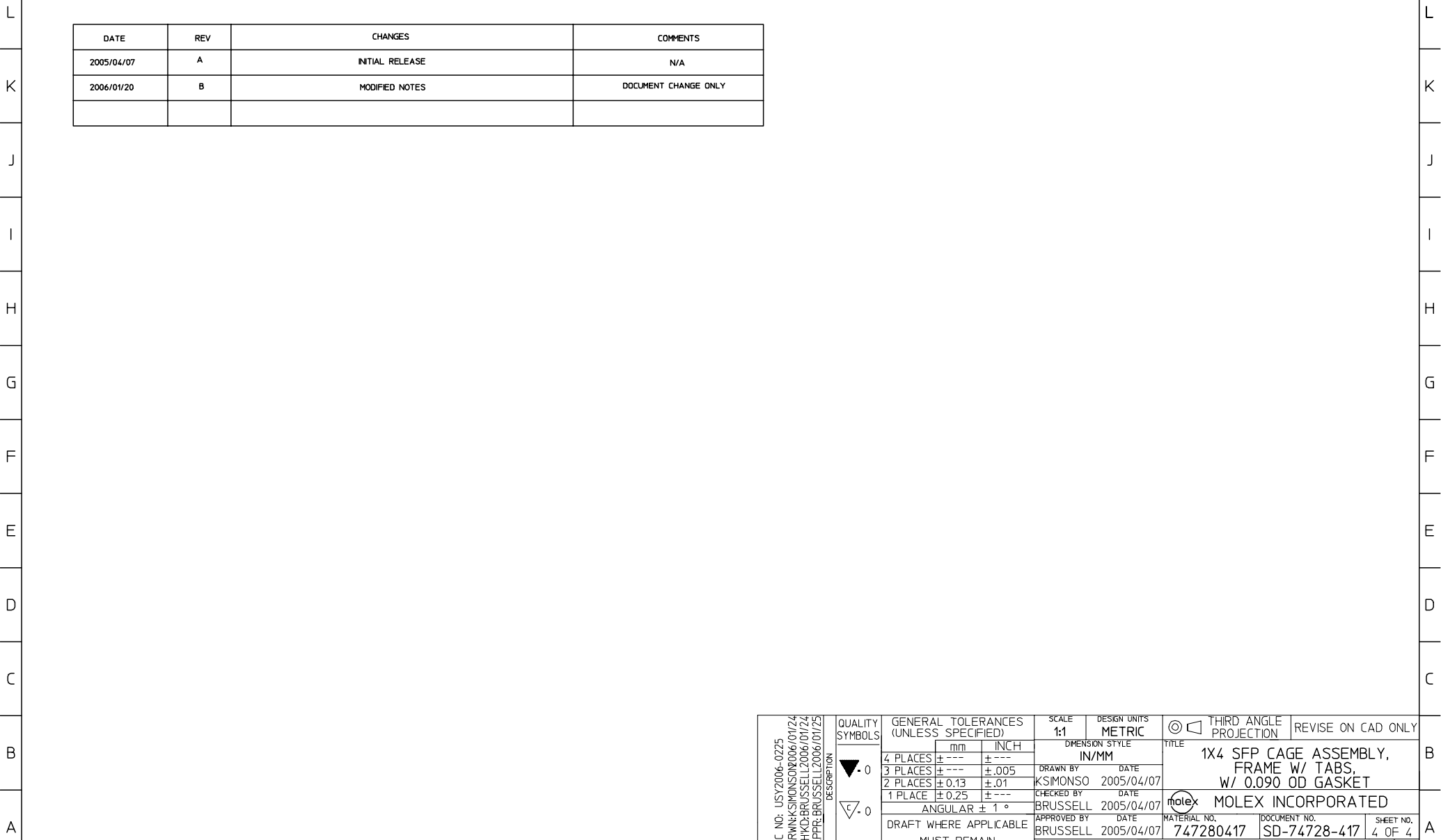


EC NO: USY2006-0225 DRW:KSIMONSON06/01/24 CHK:KBRUSSELL2006/01/24 APPR:BRUSSELL2006/01/25 REV DESCRIPTION	QUALITY SYMBOLS	GENERAL TOLERANCES (UNLESS SPECIFIED)	SCALE 4:1	DESIGN UNITS METRIC	THIRD ANGLE PROJECTION	REVISE ON CAD ONLY																					
	$\blacktriangledown .0$ $\nabla .0$	<table border="1"> <thead> <tr> <th></th> <th>mm</th> <th>INCH</th> </tr> </thead> <tbody> <tr> <td>4 PLACES</td> <td>± .005</td> <td>± .0005</td> </tr> <tr> <td>3 PLACES</td> <td>± .01</td> <td>± .001</td> </tr> <tr> <td>2 PLACES</td> <td>± .02</td> <td>± .002</td> </tr> <tr> <td>1 PLACE</td> <td>± .05</td> <td>± .005</td> </tr> </tbody> </table>		mm	INCH	4 PLACES	± .005	± .0005	3 PLACES	± .01	± .001	2 PLACES	± .02	± .002	1 PLACE	± .05	± .005	<table border="1"> <thead> <tr> <th colspan="2">DIMENSION STYLE</th> </tr> <tr> <th>mm</th> <th>INCH</th> </tr> </thead> <tbody> <tr> <td>± .005</td> <td>± .0005</td> </tr> </tbody> </table>	DIMENSION STYLE		mm	INCH	± .005	± .0005	DRAWN BY KSIMONSON	DATE 2005/04/07	TITLE 1X4 SFP CAGE ASSEMBLY, FRAME W/ TABS, W/ 0.090 OD GASKET
			mm	INCH																							
		4 PLACES	± .005	± .0005																							
3 PLACES	± .01	± .001																									
2 PLACES	± .02	± .002																									
1 PLACE	± .05	± .005																									
DIMENSION STYLE																											
mm	INCH																										
± .005	± .0005																										
	ANGULAR ± 1°	DRAFT WHERE APPLICABLE MUST REMAIN WITHIN DIMENSIONS	CHECKED BY BRUSSELL	DATE 2005/04/07	MATERIAL NO. 747280417	DOCUMENT NO. SD-74728-417	SHEET NO. 3 OF 4																				
			APPROVED BY BRUSSELL	DATE 2005/04/07	MOLEX INCORPORATED THIS DRAWING CONTAINS INFORMATION THAT IS PROPRIETARY TO MOLEX INCORPORATED AND SHOULD NOT BE USED WITHOUT WRITTEN PERMISSION																						

19 18 17 16 15 14 13 12 11 10 9 8 7 6 5 4 3 2 1

20 | 19 | 18 | 17 | 16 | 15 | 14 | 13 | 12 | 11 | 74728 | 9 | 8 | 7 | 6 | 5 | 4 | 3 | 2 | 1

DATE	REV	CHANGES	COMMENTS
2005/04/07	A	INITIAL RELEASE	N/A
2006/01/20	B	MODIFIED NOTES	DOCUMENT CHANGE ONLY



EC NO: USY2006-0225 DRW:KSIMONSO06/01/24 CHK:KBRUSSELL2006/01/24 APPR:BRUSSELL2006/01/25	QUALITY SYMBOLS	GENERAL TOLERANCES (UNLESS SPECIFIED)	SCALE 1:1	DESIGN UNITS METRIC	THIRD ANGLE PROJECTION	REVISE ON CAD ONLY																		
	0 0	<table border="1"> <thead> <tr> <th></th> <th>mm</th> <th>INCH</th> </tr> </thead> <tbody> <tr> <td>4 PLACES</td> <td>± ---</td> <td>± ---</td> </tr> <tr> <td>3 PLACES</td> <td>± ---</td> <td>± .005</td> </tr> <tr> <td>2 PLACES</td> <td>± 0.13</td> <td>± .01</td> </tr> <tr> <td>1 PLACE</td> <td>± 0.25</td> <td>± ---</td> </tr> </tbody> </table>		mm	INCH	4 PLACES	± ---	± ---	3 PLACES	± ---	± .005	2 PLACES	± 0.13	± .01	1 PLACE	± 0.25	± ---	<table border="1"> <thead> <tr> <th colspan="2">DIMENSION STYLE</th> </tr> </thead> <tbody> <tr> <td>IN/MM</td> <td></td> </tr> </tbody> </table>	DIMENSION STYLE		IN/MM		TITLE 1X4 SFP CAGE ASSEMBLY, FRAME W/ TABS, W/ 0.090 OD GASKET	
			mm	INCH																				
	4 PLACES	± ---	± ---																					
3 PLACES	± ---	± .005																						
2 PLACES	± 0.13	± .01																						
1 PLACE	± 0.25	± ---																						
DIMENSION STYLE																								
IN/MM																								
DRAFT WHERE APPLICABLE MUST REMAIN WITHIN DIMENSIONS		APPROVED BY BRUSSELL 2005/04/07	DATE 2005/04/07	MATERIAL NO. 747280417	DOCUMENT NO. SD-74728-417	SHEET NO. 4 OF 4																		
THIS DRAWING CONTAINS INFORMATION THAT IS PROPRIETARY TO MOLEX INCORPORATED AND SHOULD NOT BE USED WITHOUT WRITTEN PERMISSION																								

19 | 18 | 17 | 16 | 15 | 14 | 13 | 12 | 11 | 10 | 9 | 8 | 7 | 6 | 5 | 4 | 3 | 2 | 1