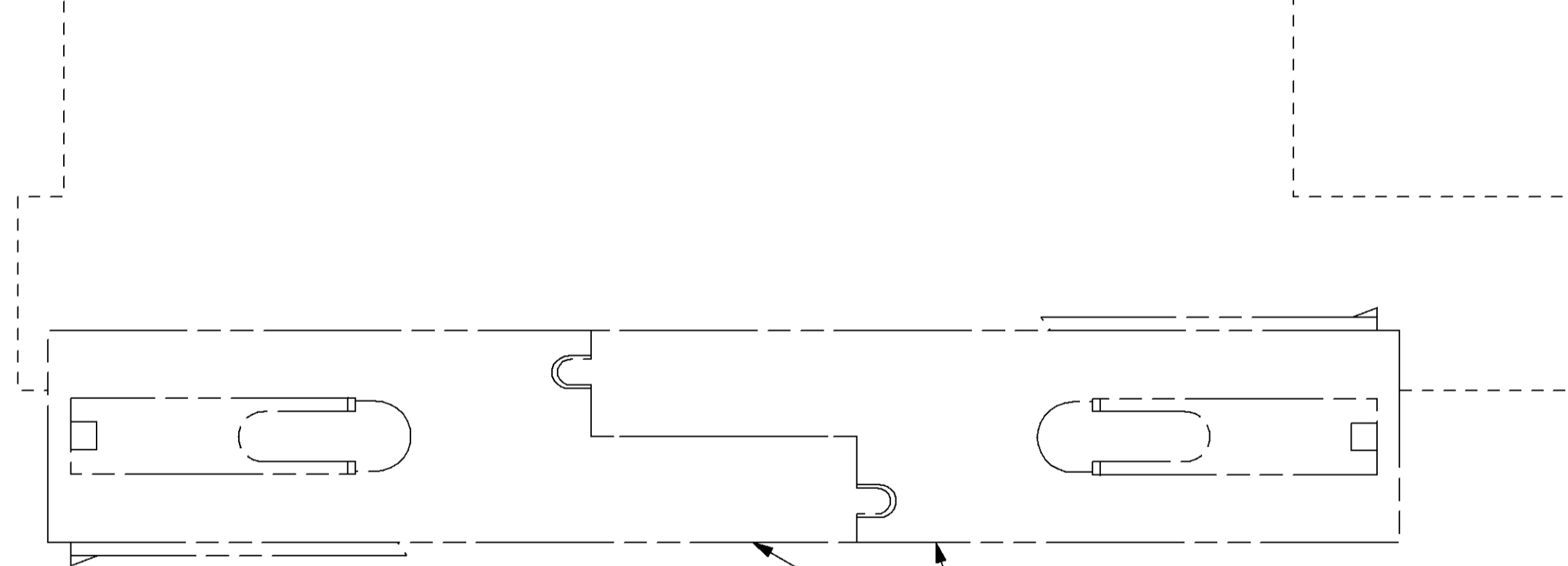
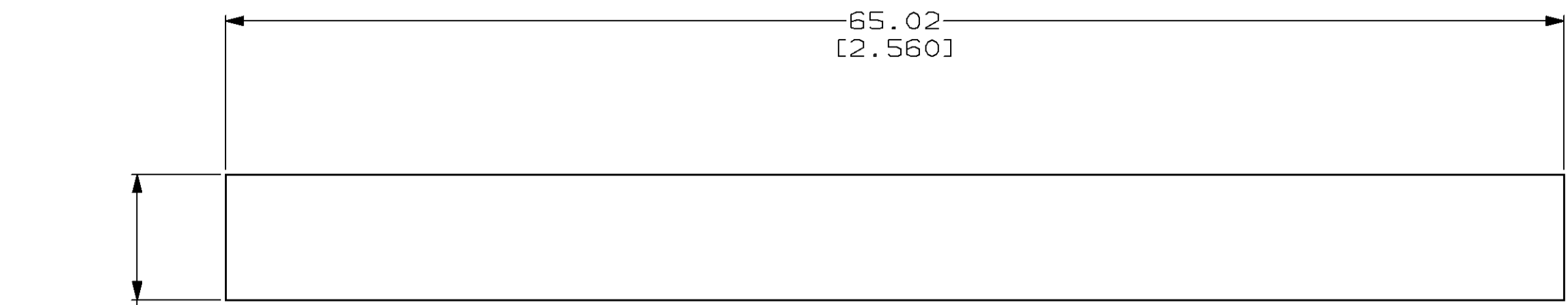


THIS DRAWING IS UNPUBLISHED. RELEASED FOR PUBLICATION
 BY AMP INCORPORATED. ALL RIGHTS RESERVED.

| LOC | DIST | REVISIONS | | | |
|-----|------|-------------|---------------------------------|-----------|------|
| P | LTR | DESCRIPTION | DATE | DWN | APVD |
| FT | 60 | B | REDRAWN & REV PER EC 0320-70-97 | 14 MAR 97 | - |



MATED AND INTERLOCKED HOUSINGS
REF

- 1. POLYPHENYLENE OXIDE MOLDING COMPOUND, POLYSTYRENE MODIFIED, BLACK. UL FLAME CLASSIFICATION: 94V-1.
- 2. EXTERNAL LOCKING LATCH USED WITH CONNECTORS FOR EXTRA MATED RETENTION FORCE - APPROXIMATELY 100 LB RETENTION PER EXTERNAL LOCKING LATCH.
- 3. ALL DIMENSIONS SHOWN ARE MAXIMUM UNLESS OTHERWISE SPECIFIED.

557640-1
PART NUMBER

| | | | | |
|--|--|----------------------------------|---|--|
| THIS DRAWING IS A CONTROLLED DOCUMENT. | | DWN M. BINNER 14 MAR 97 | AMP Incorporated Harrisburg, PA 17105-3608 | |
| DIMENSIONS: mm [INCHES] | | CHK R. STONE 14 MAR 97 | NAME | |
| TOLERANCES UNLESS OTHERWISE SPECIFIED: | | APVD M. McALONIS 17 MAR 97 | PRODUCT SPEC | |
| 0 PLC ±- | | 108-1373 | | |
| 1 PLC ±- | | APPLICATION SPEC | | |
| 2 PLC ±- | | 114-6051 | | |
| 3 PLC ±- | | SIZE CAGE CODE DRAWING NO | | |
| 4 PLC ±- | | A2 00779 C-557640 | | |
| ANGLES ±- | | RESTRICTED TO | | |
| FINISH - | | - | | |
| MATERIAL | | CUSTOMER DRAWING | | |
| SCALE 4:1 | | SHEET 1 OF 1 | | |
| REV B | | | | |

557640