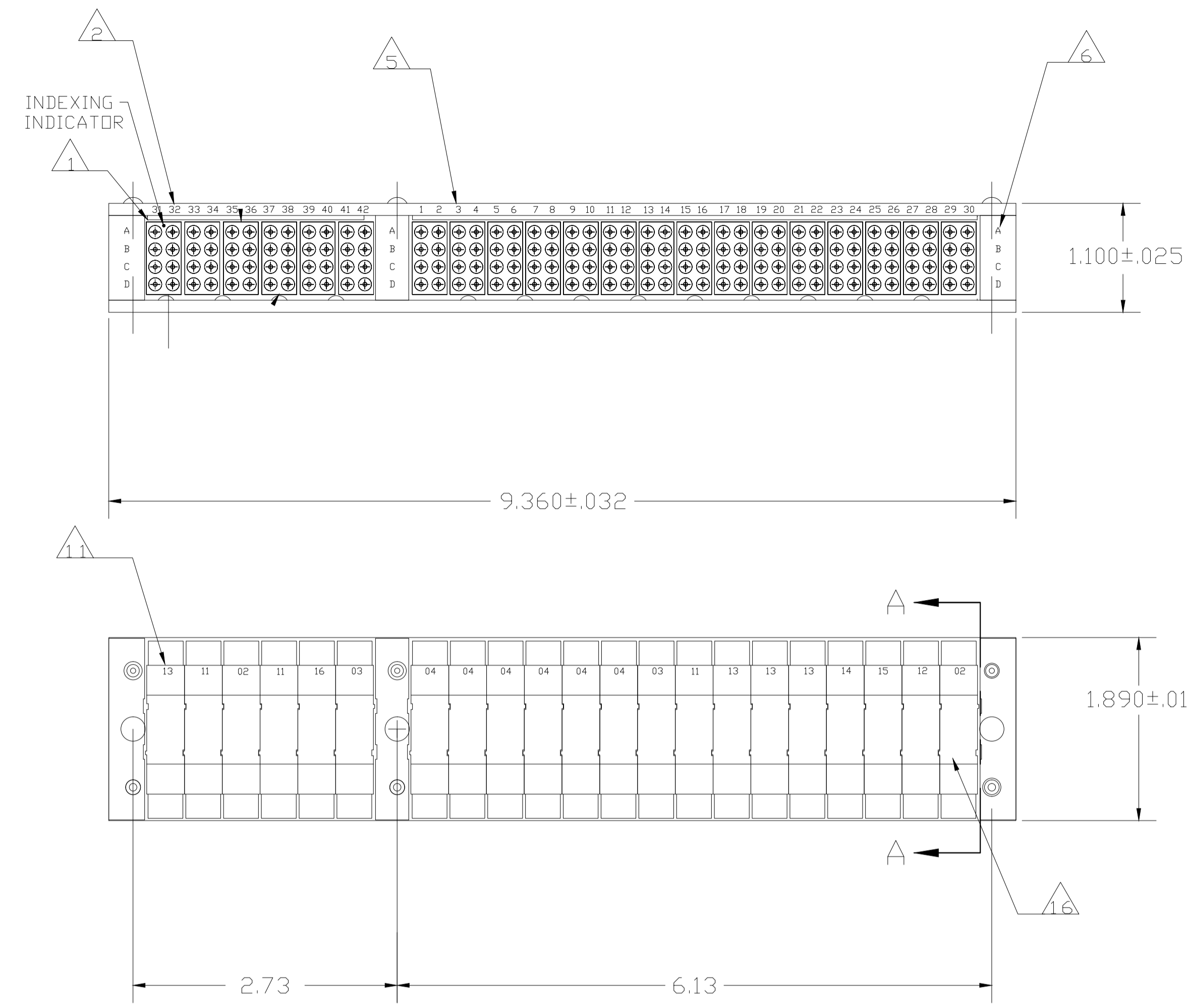
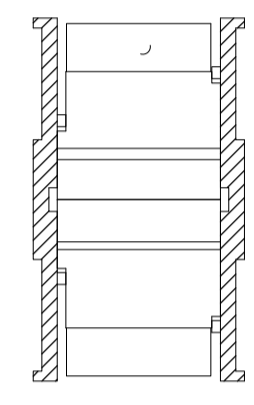


THIS DRAWING IS UNPUBLISHED.	RELEASED FOR PUBLICATION	9-00, 9-16-00
DESCRIPTION	AMP PART NO.	MIL PART NO.
CONTACT	1-592404-1	M39029/1-102
SEALING PLUG	592104-2	MS27488-16
INS/EXT TOOL	592155-1	M81969/14-03

LOC	DIST	REV	DESCRIPTION	DATE	DWN	APVD
DF	AO	C	REVISED PER ECO-14-013776	10NDV14	MGM	CT

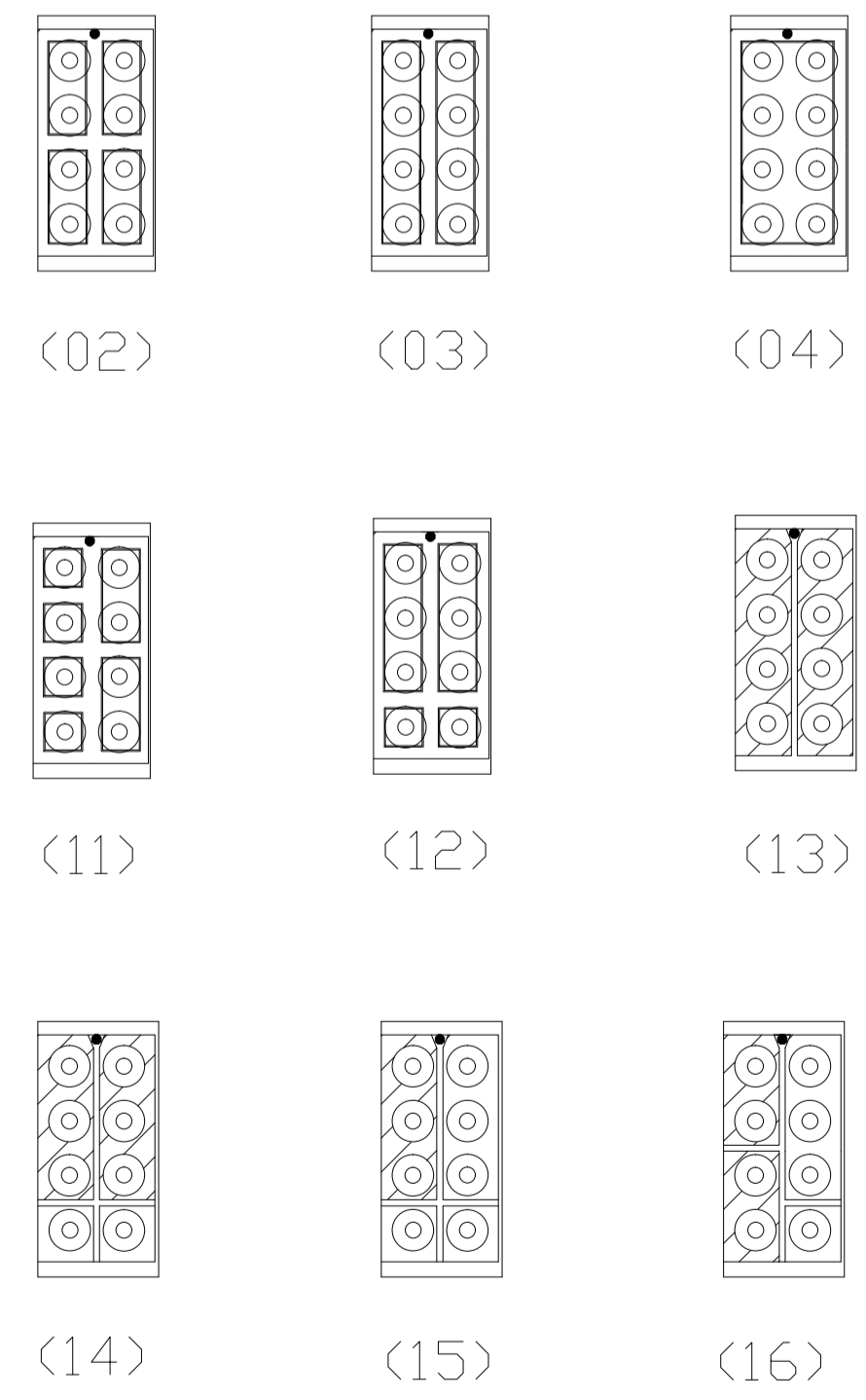


- 1 MODULE ASSEMBLIES ORIENTATED AS SHOWN FROM LOCATION NO. 31 ON RAIL ASSEMBLY.
- 2 MARK MODULE BLOCK WITH APPROPRIATE BUSSING ARRANGEMENT.
- 3 MARK CUSTOMER PART NO. 97437-121-01A. (-2 ONLY)
- 4 MARK "AMP", AMP PART NO. AND DATE CODE.
- 5 MARK TOP AND BOTTOM OF RAIL ASSEMBLY WITH ZONE IDENTIFICATION AS SHOWN.
- 6 MARK TOP OF END BLOCKS AND TIE BLOCK WITH "ABCD" AT LOCATION SHOWN.
- 7 MARK BOTTOM OF END BLOCKS AND TIE BLOCK WITH "EFGH" AT LOCATION SHOWN.
- 8 MARK LEFT SIDE RAIL WITH BUSSING IDENTIFICATION AS SHOWN.
- 9 REF. FLAT HEADED SCREWS MS51959-4.
- 10 REF. PAN HEADED SCREWS MS35206-203.
- 11 MARK EACH APPLICABLE MODULE ASSEMBLY WITH BUSSING ARRANGEMENT NUMBER IN APPROXIMATE AREA SHOWN.
- 12 REF. FLATHEAD SCREW MS51959-6 2
- 13 LOCK WASHER MS35338-039.
- 14. ROLLS-ROYCE QUALITY SPECIFICATION CQC-103 IS INVOKED FOR THIS PART NUMBER.
- 15 CONTACTS, SEALING PLUGS AND INS/EXT TOOL ARE NOT SUPPLIED, SEE TABLE FOR PART NUMBERS.
- 16 HOUSING MATERIAL: GLASS FILLED EPOXY THERMOSET. COLOR: BLACK ALL MODULES.

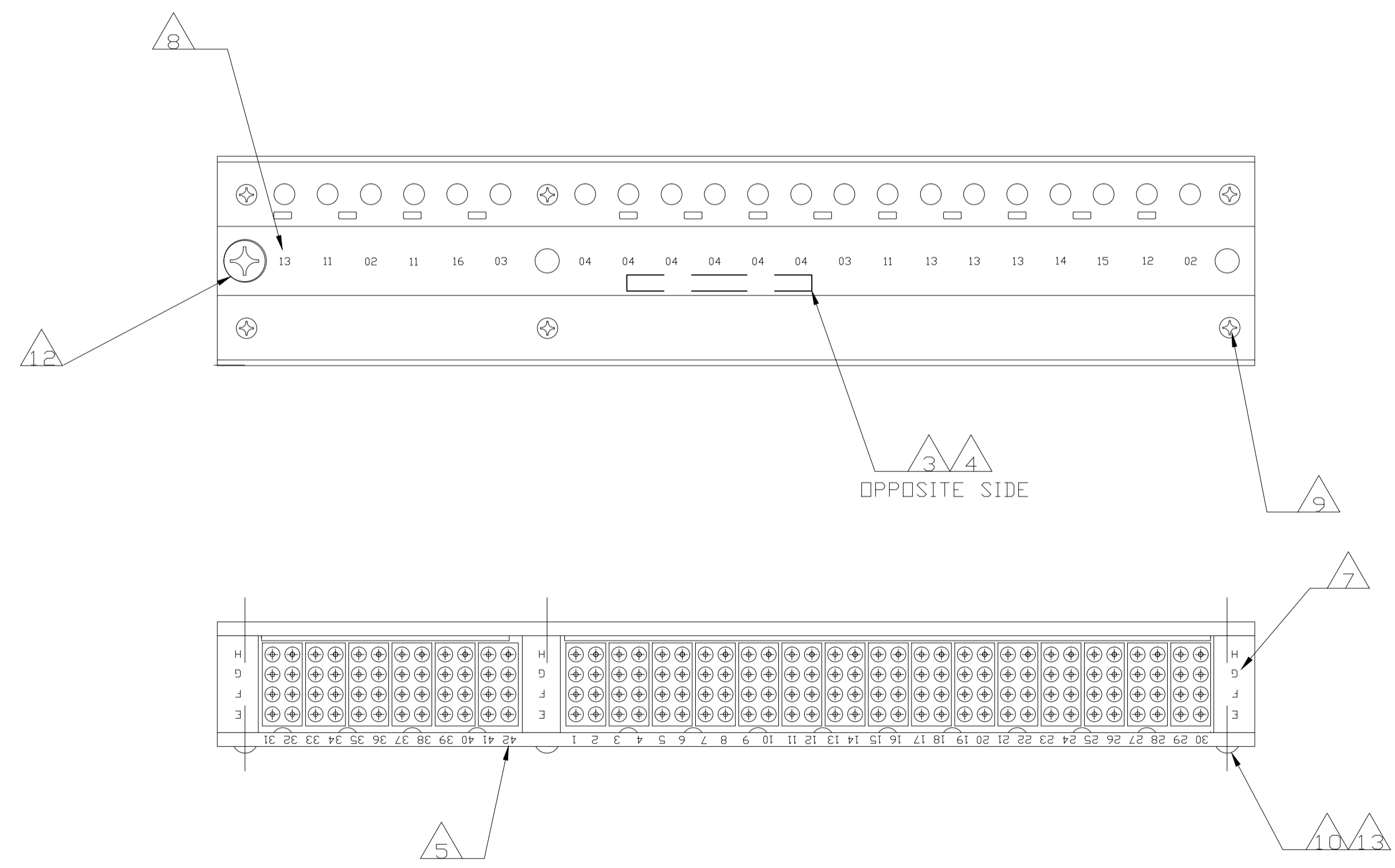


SECTION A - A

RAIL REMOVED FOR CLARITY



BUSSING ARRANGEMENT



RoHS COMPLIANT PART	(13) (11) (02) (11) (16) (03) TIE BLDCK (04) (04) (04) (04) (04) (04) (03) (11) (13) (13) (13) (14) (15) (12) (02)	5-591642-2
SUPERCEDED BY 591642-2	(13) (11) (02) (11) (16) (03) TIE BLDCK (04) (04) (04) (04) (04) (03) (11) (13) (13) (13) (14) (15) (12) (02)	591642-2
REMARKS	BUSSING ARRANGEMENT	PART NO

THIS DRAWING IS A CONTROLLED DOCUMENT.		DWN C. C. THOMAS 9-16-00	19SEP00		 TE Connectivity
DIMENSIONS INCHES	TOLERANCES UNLESS OTHERWISE SPECIFIED	CHK D. MILLER 9-15-00	NAME	PRODUCT SPEC	
0 PLC ± -	1 PLC ± -	APVD D. MILLER	APPLICATION SPEC	SIZE	CAGE CODE
2 PLC ± .02	3 PLC ± .005	DATE	WEIGHT	A1	00779
4 PLC ± -	ANGLES ± -	FINISH	MATERIAL	SCALE	1:1
CUSTOMER DRAWING		SHEET 1 OF 1		REV C	