

## High Power GaAs SPDT Switch DC - 7.0 GHz

Rev. V1

### Features

- Ideal for high power SPDT switch applications including WiMAX, WLAN, Mesh Networks, and Fixed Wireless Access
- Broadband Performance: DC - 7.0 GHz
- Low Insertion Loss:
  - 0.65 dB @ 3.5 GHz, RFC to T<sub>X</sub>
  - 0.70 dB @ 3.5 GHz, RFC to R<sub>X</sub>
- High P0.1dB Compression:
  - 40 dBm @ 3V, 3.5 GHz, RFC to T<sub>X</sub>
- Fast Settling for Low Gate Lag requirements
- Lead-Free 2 mm 8-Lead PDFN Package
- 100% Matte Tin Plating over Copper
- Halogen-Free "Green" Mold Compound
- RoHS\* Compliant and 260°C Reflow Compatible
- Asymmetrical Design for optimized performance

### Description

M/A-COM's MASW-007921 is a broadband GaAs pHEMT MMIC SPDT switch available in a lead-free 2 mm 8-lead PDFN package. The MASW-007921 is ideally suited for applications where very small size and high linearity are required.

Typical applications include WiMAX, WLAN, Mesh networks, fixed wireless access, and other higher power systems. This switch has a very high initial compression point, ideal for complex modulations such as OFDM, with large peak average power levels.

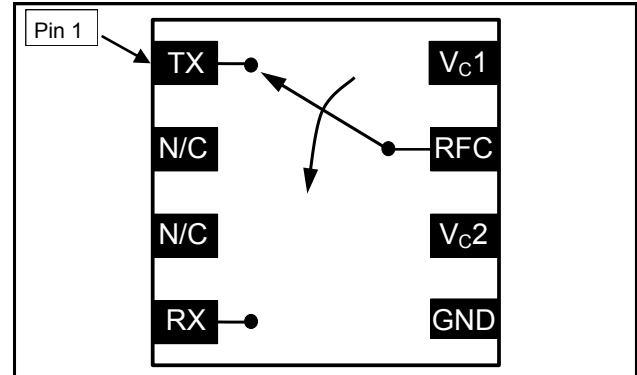
The MASW-007921 is fabricated using a 0.5 micron gate length GaAs pHEMT process. The process features full passivation for performance and reliability.

### Ordering Information <sup>1,2</sup>

Part Number	Package
MASW-007921-TR3000	3000 piece reel
MASW-007921-001SMB	Sample Board 2.0 - 6.0 GHz Tuning
MASW-007921-002SMB	Sample Board 0.05 - 2.0 GHz Tuning

1. Reference Application Note M513 for reel size information.
2. All sample boards include 5 loose parts.

### Functional Schematic



### Pin Configuration <sup>3</sup>

Pin No.	Pin Name	Description
1	T <sub>X</sub>	RF Output 1
2	N/C	No Connection
3	N/C	No Connection
4	R <sub>X</sub>	RF Output 2
5	GND	RF and DC Ground
6	V <sub>C2</sub>	Voltage Control 2
7	RFC	RF Common
8	V <sub>C1</sub>	Voltage Control 1
9	Paddle <sup>4</sup>	RF and DC Ground

3. M/A-COM recommends connecting unused pins to ground.
4. The exposed pad centered on the package bottom must be connected to RF and DC ground.

### Absolute Maximum Ratings <sup>5,6,7</sup>

Parameter	Absolute Maximum
Input Power @ 5 V Control (RFC to R <sub>X</sub> Path)	+38 dBm
Input Power @ 5 V Control (RFC to T <sub>X</sub> Path)	+40 dBm
Voltage	≤ 8.5 volts
Operating Temperature	-40°C to +85°C
Storage Temperature	-65°C to +150°C

5. Exceeding any one or combination of these limits may cause permanent damage to this device.
6. M/A-COM does not recommend sustained operation near these survivability limits.
7. Maximum Input Power applies for 0.5 to 7.0 GHz range.

<sup>1</sup> \* Restrictions on Hazardous Substances, European Union Directive 2002/95/EC.

## High Power GaAs SPDT Switch DC - 7.0 GHz

Rev. V1

**Electrical Specifications:  $T_A = 25^\circ\text{C}$ ,  $Z_0 = 50 \Omega$ ,  $V_C = 0 \text{ V} / 3 \text{ V}$ , 4.7 pF Capacitor<sup>8,9</sup>**

Parameter	Test Conditions	Units	Min.	Typ.	Max.
Insertion Loss RFC to $R_x$	0.05 - 2 GHz <sup>10</sup>	dB	—	0.5	—
	2.4 GHz	dB	—	0.6	0.85
	3.5 GHz	dB	—	0.70	—
	5.8 GHz	dB	—	0.8	—
Insertion Loss RFC to $T_x$	0.05 - 2 GHz <sup>10</sup>	dB	—	0.5	—
	2.4 GHz	dB	—	0.65	0.85
	3.5 GHz	dB	—	0.65	—
	5.8 GHz	dB	—	1.2	—
Isolation	0.05 - 2 GHz <sup>10</sup>	dB	—	27	—
	2.4 GHz	dB	21	25	—
	3.5 GHz	dB	—	26	—
	5.8 GHz	dB	—	30	—
Return Loss	DC - 6.0 GHz	dB	—	15	—
Input IP2 $R_x$	10 MHz Spacing, +20 dBm				
	2.4 GHz	dBm	—	102	—
	3.5 GHz	dBm	—	99	—
	5.8 GHz	dBm	—	84	—
Input IP2 $T_x$	10 MHz Spacing, +20 dBm				
	2.4 GHz	dBm	—	104	—
	3.5 GHz	dBm	—	101	—
	5.8 GHz	dBm	—	88	—
Input IP3 $R_x$	10 MHz Spacing, +20 dBm				
	2.4 GHz	dBm	—	59	—
	3.5 GHz	dBm	—	57	—
	5.8 GHz	dBm	—	51	—
Input IP3 $T_x$	10 MHz Spacing, +20 dBm				
	2.4 GHz	dBm	—	62	—
	3.5 GHz	dBm	—	58	—
	5.8 GHz	dBm	—	52	—
Input P0.1dB $R_x$	2.4 GHz	dBm	—	38	—
	3.5 GHz	dBm	—	37	—
	5.8 GHz	dBm	—	39	—
Input P0.1dB $T_x$	2.4 GHz	dBm	—	38	—
	3.5 GHz	dBm	—	40	—
	5.8 GHz	dBm	—	39	—
Trise, Tfall	10% to 90% RF	nS	—	21	—
	90% to 10% RF	nS	—	18	—
Ton, Toff	50% control to 90% and 50% control to 10% RF	nS	—	40	—
Transients		mV	—	100	—
Control Current		$\mu\text{A}$	—	2.0	10.0

8. For positive voltage control, external DC blocking capacitors are required on all RF ports.

9. Performance can be optimized by varying the DC blocking capacitor value. See application schematic for details.

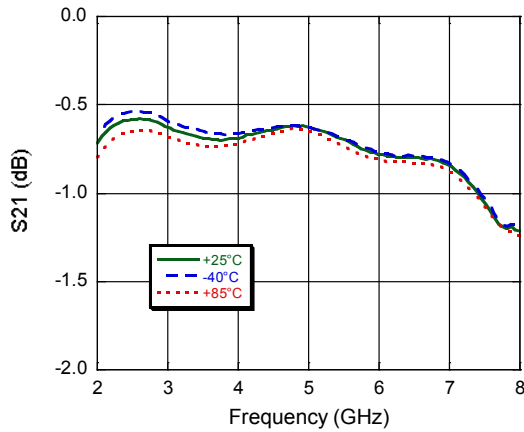
10. 0.05 - 2.0 GHz specifications apply with 1000 pF blocking capacitors. See applications section for typical data.

## High Power GaAs SPDT Switch DC - 7.0 GHz

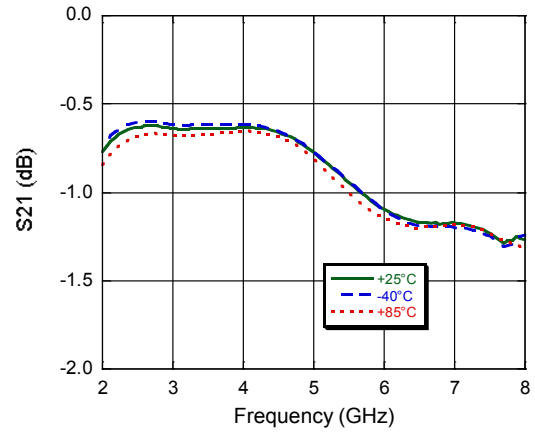
Rev. V1

Typical Performance Curves Over Temp.:  $Z_0 = 50 \Omega$ , 4.7 pF Blocking Caps on all RF Ports

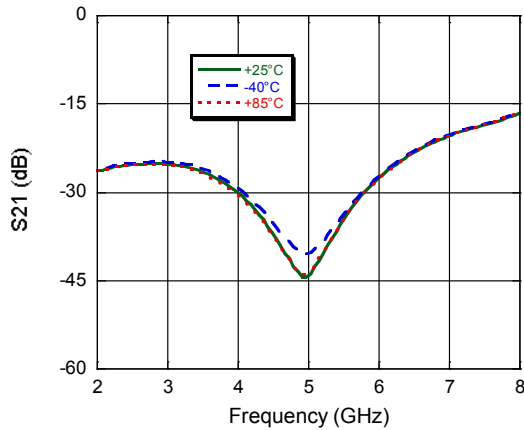
**RFC to Rx Insertion Loss**



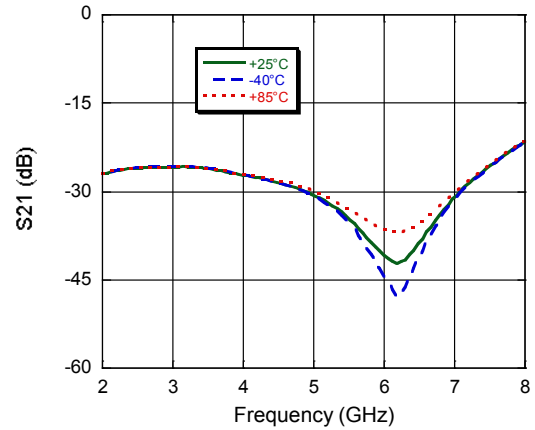
**RFC to Tx Insertion Loss**



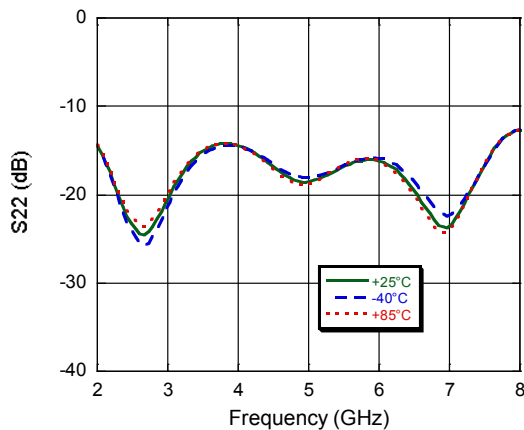
**RFC to Rx Isolation**



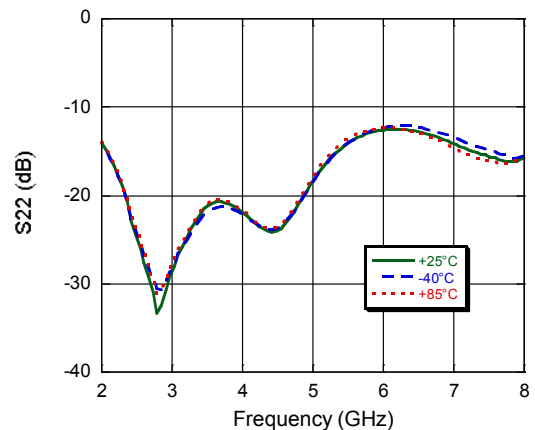
**RFC to Tx Isolation**



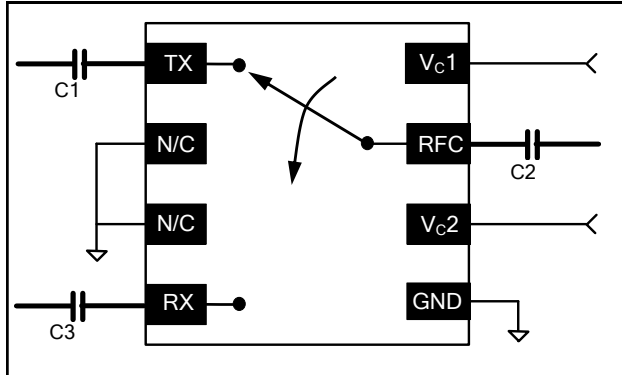
**Rx Return Loss**



**Tx Return Loss**



### Application Schematic <sup>11</sup>



Frequency	Recommended Value C1 - C3
0.05 - 2.0 GHz	1000 pF
2.4 - 2.5 GHz	8 pF
2.0 - 6.0 GHz	4.7 pF
4.9 - 7.0 GHz	1.5 pF

11. M/A-COM recommends connecting unused package pins (N/C) to ground as shown.

### Truth Table <sup>12,13</sup>

Control V <sub>c1</sub>	Control V <sub>c2</sub>	RFC - TX	RFC - RX
1	0	On	Off
0	1	Off	On

12. Differential voltage, V (state 1) - V (state 0), must be +2.7 V minimum and must not exceed 8.0 V.
13. Positive Control: 1 = +2.9 V to +8 V, 0 = 0 V  $\pm$  0.2 V.  
Negative Control: 1 = 0 V  $\pm$  0.2 V, 0 = -2.9V to -8.0 V.

### Qualification

Qualified to M/A-COM specification REL-201, Process Flow -1.

### Handling Procedures

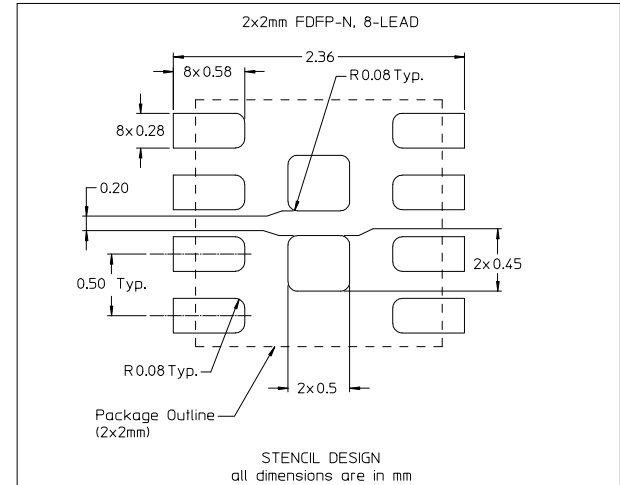
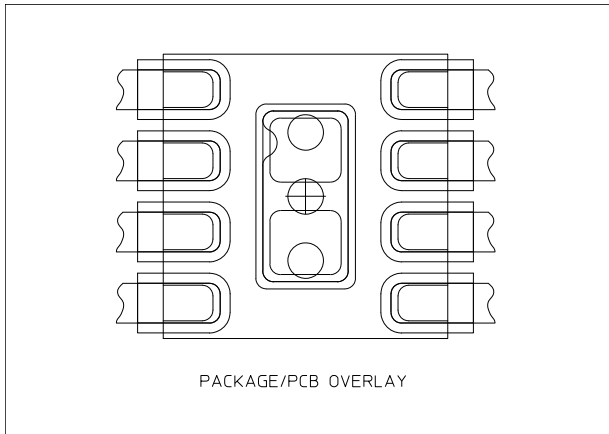
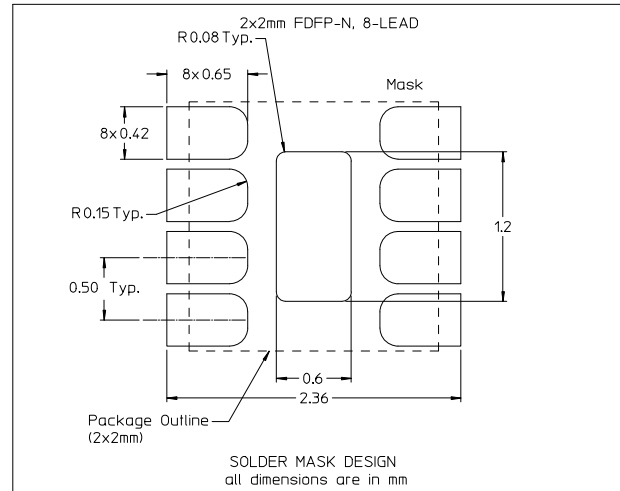
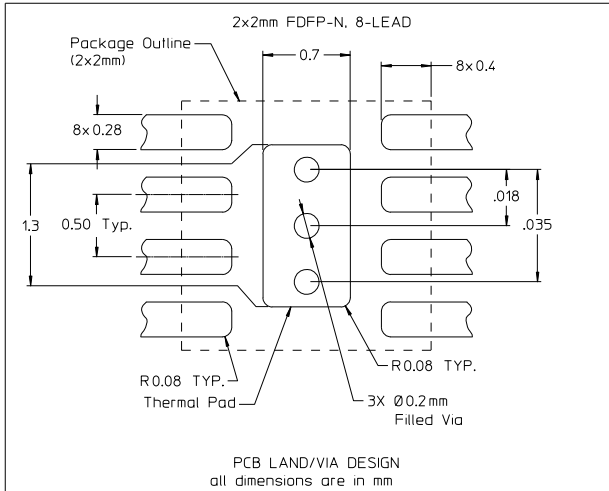
Please observe the following precautions to avoid damage:

### Static Sensitivity

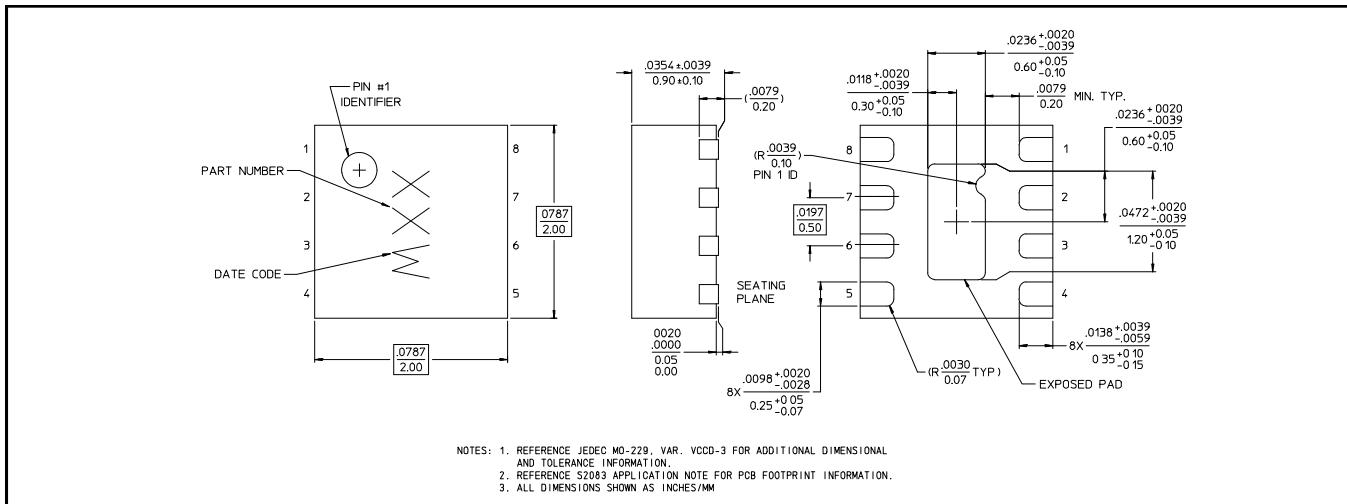
Gallium Arsenide Integrated Circuits are sensitive to electrostatic discharge (ESD) and can be damaged by static electricity. Proper ESD control techniques should be used when handling these devices.

## High Power GaAs SPDT Switch DC - 7.0 GHz

Rev. V1



### Lead Free 2 mm 8-lead PDFN †

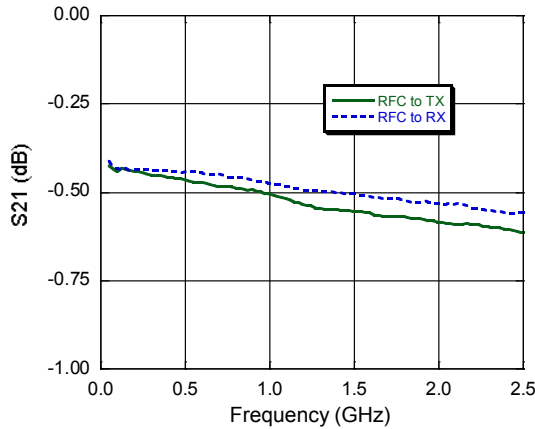


† Reference Application Note M538 for lead-free solder reflow recommendations.  
Meets JEDEC moisture sensitivity level 1 requirements.

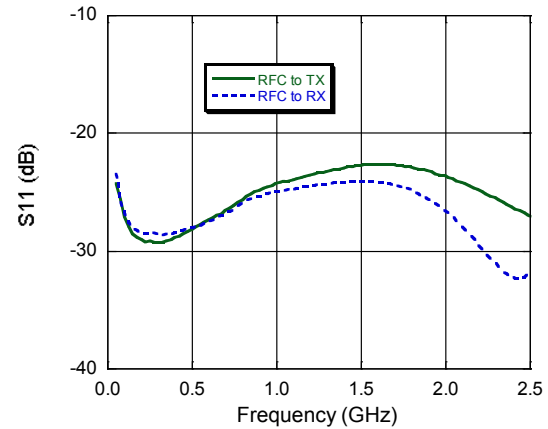
## Applications Section

Typical Low Frequency Performance Curves:  $T_A = 25^\circ\text{C}$ ,  $Z_0 = 50 \Omega$ , 1000 pF Blocking Caps on all RF Ports

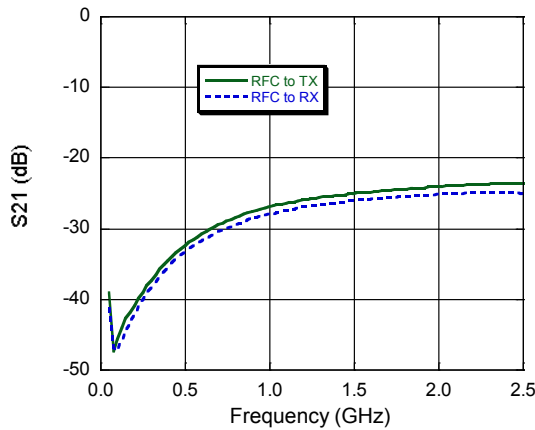
**Insertion Loss**



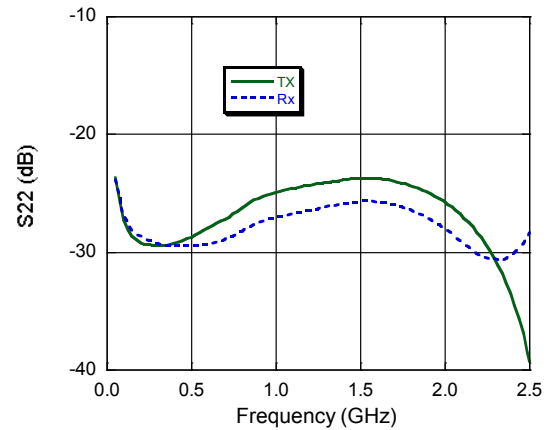
**RFC Return Loss**



**Isolation**



**Tx and Rx Return Loss**



M/A-COM Technology Solutions Inc. All rights reserved.

Information in this document is provided in connection with M/A-COM Technology Solutions Inc ("MACOM") products. These materials are provided by MACOM as a service to its customers and may be used for informational purposes only. Except as provided in MACOM's Terms and Conditions of Sale for such products or in any separate agreement related to this document, MACOM assumes no liability whatsoever. MACOM assumes no responsibility for errors or omissions in these materials. MACOM may make changes to specifications and product descriptions at any time, without notice. MACOM makes no commitment to update the information and shall have no responsibility whatsoever for conflicts or incompatibilities arising from future changes to its specifications and product descriptions. No license, express or implied, by estoppel or otherwise, to any intellectual property rights is granted by this document.

THESE MATERIALS ARE PROVIDED "AS IS" WITHOUT WARRANTY OF ANY KIND, EITHER EXPRESS OR IMPLIED, RELATING TO SALE AND/OR USE OF MACOM PRODUCTS INCLUDING LIABILITY OR WARRANTIES RELATING TO FITNESS FOR A PARTICULAR PURPOSE, CONSEQUENTIAL OR INCIDENTAL DAMAGES, MERCHANTABILITY, OR INFRINGEMENT OF ANY PATENT, COPYRIGHT OR OTHER INTELLECTUAL PROPERTY RIGHT. MACOM FURTHER DOES NOT WARRANT THE ACCURACY OR COMPLETENESS OF THE INFORMATION, TEXT, GRAPHICS OR OTHER ITEMS CONTAINED WITHIN THESE MATERIALS. MACOM SHALL NOT BE LIABLE FOR ANY SPECIAL, INDIRECT, INCIDENTAL, OR CONSEQUENTIAL DAMAGES, INCLUDING WITHOUT LIMITATION, LOST REVENUES OR LOST PROFITS, WHICH MAY RESULT FROM THE USE OF THESE MATERIALS.

MACOM products are not intended for use in medical, lifesaving or life sustaining applications. MACOM customers using or selling MACOM products for use in such applications do so at their own risk and agree to fully indemnify MACOM for any damages resulting from such improper use or sale.