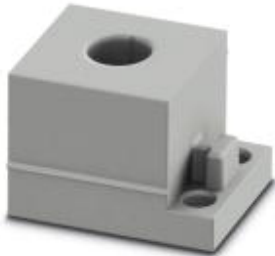


Cable sleeve - CES-STPG-GY-11 - 0801683

Please be informed that the data shown in this PDF Document is generated from our Online Catalog. Please find the complete data in the user's documentation. Our General Terms of Use for Downloads are valid (<http://phoenixcontact.com/download>)



Small, slotted cable sleeves suitable for cables with a diameter of 10 ... 11 mm, material: SEBS

Product Description

Slotted sleeves for accommodating pre-assembled cables and lines with a diameter of 10 ... 11 mm, can be used in CES sealing frames. When fitted, the sleeves also ensure strain relief according to DIN EN 50262.



Key Commercial Data

Packing unit	1 pc
Minimum order quantity	10 pc
Weight per Piece (excluding packing)	6.0 g
Custom tariff number	85472000
Country of origin	Poland

Technical data

Dimensions

External cable diameter	1x 10 mm ... 11 mm
Length	29.5 mm
Width	19.5 mm
Height	17 mm

Ambient conditions

Degree of protection	IP54 (for sealing frames with screw locking. IP44 sealing frames with locking latch.)
Ambient temperature (operation)	-40 °C ... 80 °C (static)

General

Product description	Slotted sleeves for accommodating pre-assembled cables and lines with a diameter of 10 ... 11 mm, can be used in CES sealing frames. When fitted, the sleeves also ensure strain relief according to DIN EN 50262.
---------------------	--

Cable sleeve - CES-STPG-GY-11 - 0801683

Technical data

General

No. of conductors	1
Material	SEBS
Flammability rating according to UL 94	V0
Color	gray

Standards and Regulations

Connection in acc. with standard	CUL
Flammability rating according to UL 94	V0

Classifications

eCl@ss

eCl@ss 4.0	27081002
eCl@ss 4.1	27081002
eCl@ss 5.0	27081002
eCl@ss 5.1	27081002
eCl@ss 6.0	27081002
eCl@ss 7.0	27081002
eCl@ss 8.0	27069220

ETIM

ETIM 3.0	EC000879
ETIM 4.0	EC000451
ETIM 5.0	EC000451

UNSPSC

UNSPSC 6.01	30212109
UNSPSC 7.0901	39121708
UNSPSC 11	39121708
UNSPSC 12.01	39121708
UNSPSC 13.2	39121708

Approvals

Approvals

Approvals

UL Recognized / cUL Recognized / GL / cULus Recognized

Cable sleeve - CES-STPG-GY-11 - 0801683

Approvals

Ex Approvals

Approvals submitted

Approval details

UL Recognized

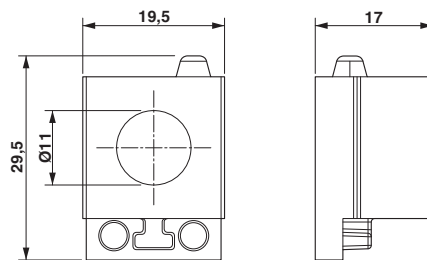
cUL Recognized

GL

cULus Recognized

Drawings

Dimensional drawing



Dimensional drawing