

4

3

2

1

THIS DRAWING IS UNPUBLISHED.

RELEASED FOR PUBLICATION

© COPYRIGHT

ALL RIGHTS RESERVED.

LOC DIST


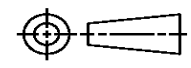
REVISIONS

P	LTR	DESCRIPTION	DATE	DWN	APVD

REPLACED BY OCEAN STYLE APPLICATOR PART NUMBER

FOR REPLACEMENT PARTS FOR APPLICATOR REFER TO ADDITIONAL PAGE(S). SPARE PARTS KIT (IF LISTED) WILL REMAIN AVAILABLE.

THE REPLACEMENT OCEAN STYLE APPLICATOR HAS THE SAME TERMINATOR/PRESS INTERFACE AS APPLICATOR

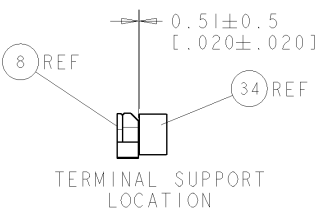
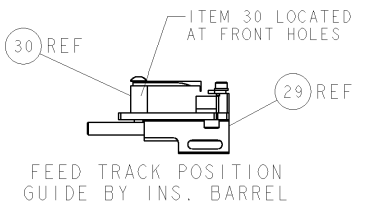
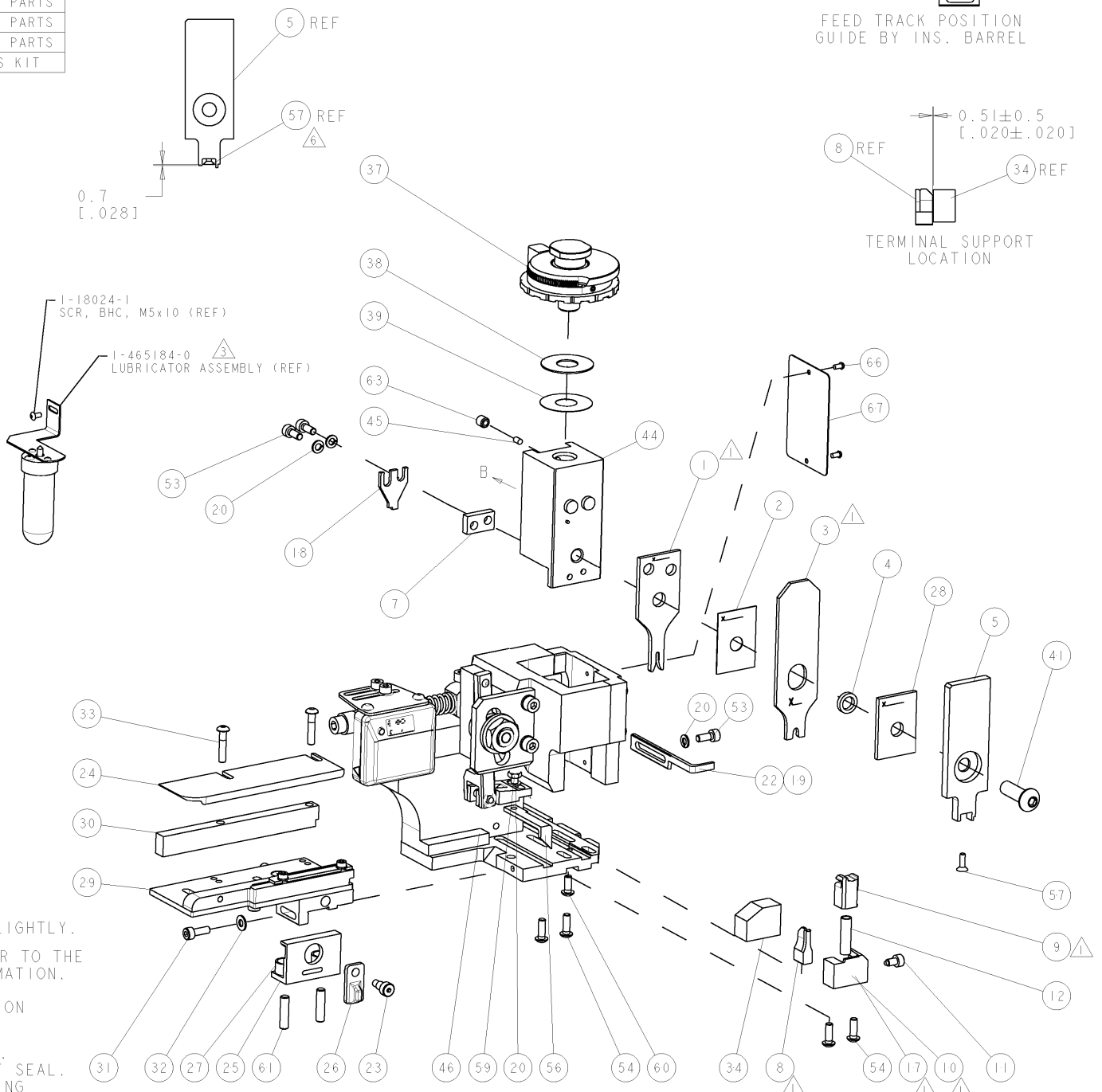
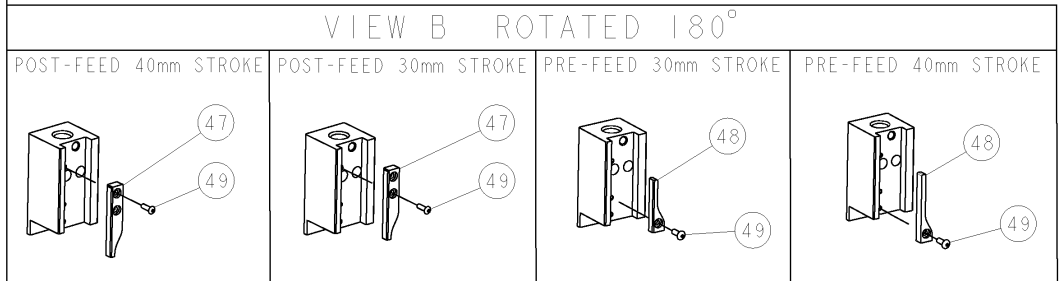
THIS DRAWING IS A CONTROLLED DOCUMENT.		DWN	 TE Connectivity		
DIMENSIONS:		CHK			
TOLERANCES UNLESS OTHERWISE SPECIFIED:		APVD	NAME		
		PRODUCT SPEC	RESTRICTED TO		
		APPLICATION SPEC	SIZE	CAGE CODE	DRAWING NO
MATERIAL	FINISH	WEIGHT	A3	C-	
		SCALE	SHEET	OF	REV

PART NUMBER	REV	TERMINATOR	FEED TYPE	DESCRIPTION
1528750-1	A	LEADMAKER	MECH POST FEED	CUTS CARRIER
1528750-2	A	BENCH	MECH PRE FEED	CUTS CARRIER
1528750-6	A	LEADMAKER	MECH POST FEED	CONTINUOUS CARRIER
7-1528750-1	A	LEADMAKER	MECH POST FEED	-1 AND SPARE PARTS
7-1528750-2	A	BENCH	MECH PRE FEED	-2 AND SPARE PARTS
7-1528750-6	A	LEADMAKER	MECH POST FEED	-6 AND SPARE PARTS
7-1528750-7	A	-	-	SPARE PARTS KIT

CRIMP DATA		TYCO TERMINAL	TYCO CRIMP SPECS
TERMINAL NAME: CRIMP CONTACT ELO			
CRIMP	SIZE	TYPE	RANGE
WIRE	1.40 [.055 IN]	F	0.35mm ² -0.50mm ²
INSUL	3.05 [.120 IN]	O	2.60 [.102 IN]
WIRE STRIP LENGTH		APPL INSTRUCTIONS	
3.70-3.90 [.146-.154 IN]		408-8322 & 408-8490	
TERMINAL		FEED	
114-18432		10.16 [.400 IN]	
TERMINALS APPLIED			
TERM PN	SEAL PN		
1411554	1393457-1		
1411556	1393457-2		
1411572	-		
1411578	-		
WIRE SIZE	CRIMP HEIGHT	REF SETTING	
0.50mm ²	1.00 ± 0.03 [.039 ± .001 IN]	B3	
0.35mm ²	0.92 ± 0.03 [.036 ± .001 IN]	B9	

- RECOMMENDED SPARE PARTS.
- GREASE RAM, CAM, CAM FOLLOWER AND FEED ROD LIGHTLY.
- CERTAIN TERMINALS REQUIRE LUBRICATION. REFER TO THE APPLICATOR INSTRUCTION SHEET FOR MORE INFORMATION.
- LUBRICATE DAILY PER THE APPLICATOR INSTRUCTION SHEET SUPPLIED WITH THE APPLICATOR.
- THIS APPLICATOR APPLIES TERMINAL WITH A SEAL. INSULATION DIA QUOTED IS OUTSIDE DIAMETER OF SEAL. WIRE INSULATION DIA IS DEPENDENT ON SEAL BEING APPLIED. SEE CUSTOMER DRAWINGS FOR SEAL INSULATION RANGES AND FOR TERMINAL TO SEAL COMPATIBILITY.
- APPLY TORQ-SEAL IN ALLEN SOCKET TO FILL HOLE AFTER FLAT HD HAS BEEN ADJUSTED TO CORRECT HEIGHT AT QUALIFICATION. APPLY #1-23419-5 LOC-TITE TO THREADS.

*** WARNING**
ON INSTALLATION, SET WIRE DISC TO LARGEST WIRE SIZE SETTING. USE OF SETTINGS BELOW MIN. REQUIRED CRIMP HEIGHT SETTING WILL CAUSE DAMAGE TO CRIMP TOOLING.



SET UP GAGE
458637-3

LOC		DIST		REVISIONS			
REV	DATE	BY	CHK	DESCRIPTION	DATE	OWN	APPR
A	12FEB2007	DP	MC	SEE ECO-07-003391			

REV	DATE	BY	CHK	DESCRIPTION	DATE	OWN	APPR
-	-	-	-	-	-	-	73
-	-	-	-	-	-	-	72
-	1	1	1	1	1	1	1338705-3
-	-	-	-	-	-	-	71
-	-	-	-	-	-	-	70
-	-	-	-	-	-	-	69
-	-	-	-	-	-	-	68
-	1	1	1	1	1	1	461264-5
-	2	2	2	2	2	2	21017-2
-	-	-	-	-	-	-	67
-	-	-	-	-	-	-	66
-	-	-	-	-	-	-	65
-	1	1	1	1	1	1	3-18031-0
-	-	-	-	-	-	-	64
-	2	2	2	2	2	2	2-18032-5
-	1	1	1	1	1	1	18024-7
-	1	1	1	1	1	1	5-18022-2
-	-	-	-	-	-	-	59
-	1	1	1	1	1	1	985575-3
-	1	1	1	1	1	1	1338685-1
-	-	-	-	-	-	-	58
-	-	-	-	-	-	-	57
-	4	4	4	4	4	4	18024-8
-	2	2	2	2	2	2	1-18023-1
-	-	-	-	-	-	-	56
-	-	-	-	-	-	-	55
-	-	-	-	-	-	-	54
-	-	-	-	-	-	-	53
-	-	-	-	-	-	-	52
-	-	-	-	-	-	-	51
-	-	-	-	-	-	-	50
-	1	1	1	1	1	1	18024-3
-	-	-	-	-	-	-	49
-	-	-	-	-	-	-	48
-	-	-	-	-	-	-	47
-	-	-	-	-	-	-	46
-	-	-	-	-	-	-	45
-	-	-	-	-	-	-	44
-	-	-	-	-	-	-	43
-	-	-	-	-	-	-	42
-	1	1	1	1	1	1	2-18024-6
-	-	-	-	-	-	-	41
-	1	1	1	1	1	1	690125-1
-	-	-	-	-	-	-	40
-	-	-	-	-	-	-	39
-	-	-	-	-	-	-	38
-	-	-	-	-	-	-	37
-	-	-	-	-	-	-	36
-	-	-	-	-	-	-	35
-	-	-	-	-	-	-	34
-	2	2	2	2	2	2	1-18024-0
-	-	-	-	-	-	-	33
-	-	-	-	-	-	-	32
-	-	-	-	-	-	-	31
-	-	-	-	-	-	-	30
-	-	-	-	-	-	-	29
-	-	-	-	-	-	-	28
-	2	2	2	2	2	2	1-22284-0
-	-	-	-	-	-	-	27
-	-	-	-	-	-	-	26
-	-	-	-	-	-	-	25
-	-	-	-	-	-	-	24
-	-	-	-	-	-	-	23
-	-	-	-	-	-	-	22
-	-	-	-	-	-	-	21
-	4	4	4	4	4	4	18025-2
-	-	-	-	-	-	-	20
-	-	-	-	-	-	-	19
-	-	-	-	-	-	-	18
-	-	-	-	-	-	-	17
-	-	-	-	-	-	-	16
-	-	-	-	-	-	-	15
-	-	-	-	-	-	-	14
-	-	-	-	-	-	-	13
-	-	-	-	-	-	-	12
-	-	-	-	-	-	-	11
-	-	-	-	-	-	-	10
-	-	-	-	-	-	-	9
-	1	2	2	2	1	1	5-1333201-4
-	-	-	-	-	-	-	8
-	-	-	-	-	-	-	7
-	-	-	-	-	-	-	6
-	-	-	-	-	-	-	5
-	-	-	-	-	-	-	4
-	-	-	-	-	-	-	3
-	-	-	-	-	-	-	2
-	-	-	-	-	-	-	1
-	-	-	-	-	-	-	0

REV	DATE	BY	CHK	DESCRIPTION	DATE	OWN	APPR
-	-	-	-	-	-	-	84
-	-	-	-	-	-	-	83
-	-	-	-	-	-	-	82
-	-	-	-	-	-	-	81
-	-	-	-	-	-	-	80
-	-	-	-	-	-	-	79
-	-	-	-	-	-	-	78
-	-	-	-	-	-	-	77
-	-	-	-	-	-	-	76
-	-	-	-	-	-	-	75
-	-	-	-	-	-	-	74
-77	-76	-72	-71	-6	-2	-1	PART NO
							DESCRIPTION
							ITEM NO

TYCO ELECTRONICS CORPORATION, HARRISBURG, PA 17105-3608

TYCO ELECTRONICS

FINISH: 10 JAN 2007

APPROVED: M. CLIFFORD

PRODUCT SPEC: FINE ADJUST SIDE FEED HDI APPLICATOR

APPLICATION SPEC: See Table

SIZE: CARE CODE: DRAWING NO: 00779 C-1528750

SCALE: 3:5 SHEET 1 OF 1 REV A