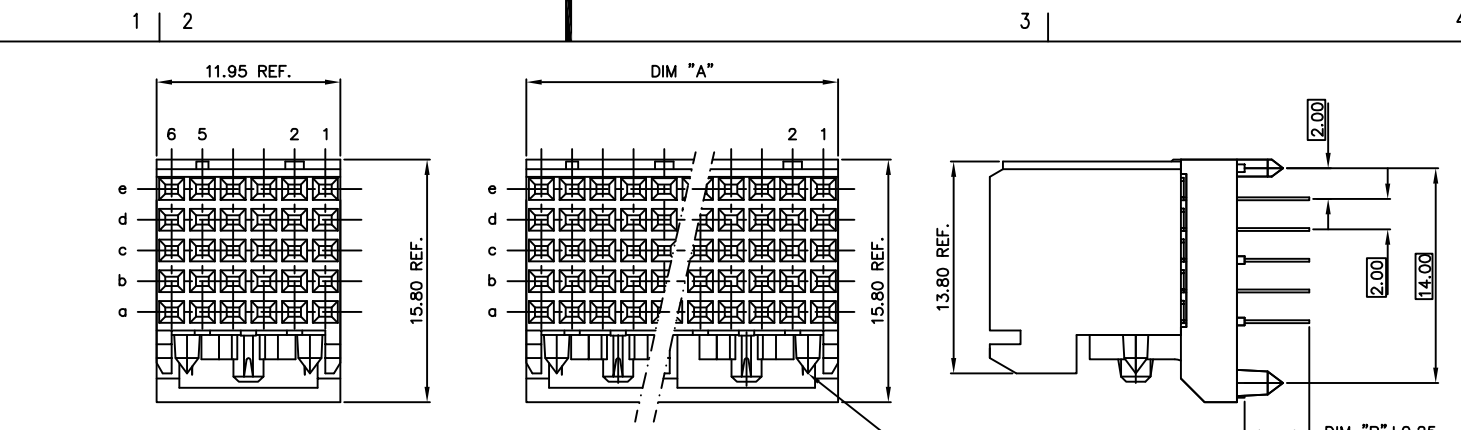


Tous droits strictement réservés. Reproduction ou communication à des tiers interdite sous quelque forme que ce soit sans autorisation écrite du propriétaire. Propriété de c FCI. Droits de reproduction FCI.



All rights strictly reserved. Reproduction or issue to third parties in any form whatever is not permitted without written authority from the proprietor. Property of FCI. Copyright FCI.

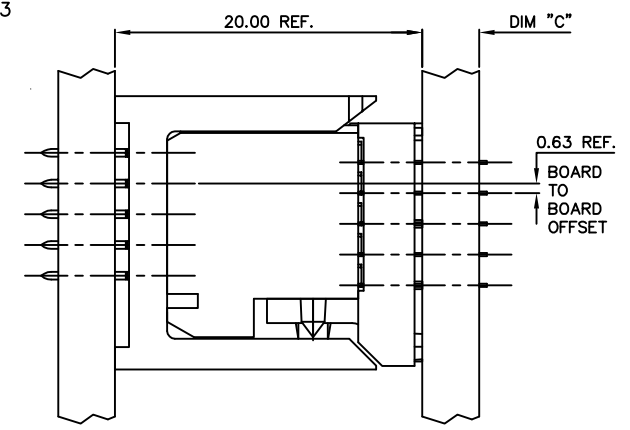
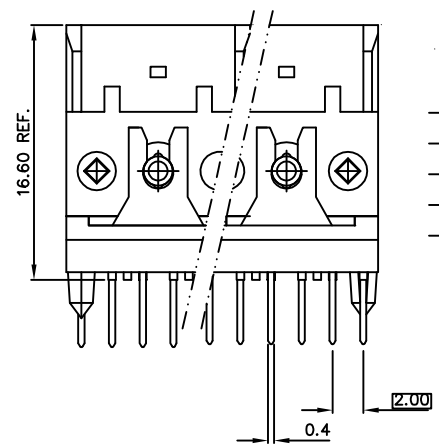
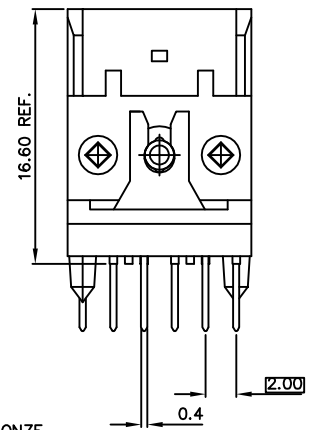
|                |
|----------------|
| PRODUCT NUMBER |
| 94560-YYY      |
| 94560-YYLFF    |



5X6 POS. -X11, -X12, -X13 AND -X51,-X52

5X12 POS. -X21, -X22, AND -X23  
 5X24 POS. -X31, -X32, AND -X33  
 5X48 POS. -X41, -X42, AND -X43

NOTE 8



NOTES:

- BODY MATERIAL: LCP 30% GLASS FLAME RETARDANT ACC. UL 94-VO
- TERMINAL MATERIAL: PHOSPHOR BRONZE
- PLATING ON SOLDERTAILS:  
 94560-YYY IS SnPb  
 94560-YYLFF IS Sn (LEAD FREE)
- INDICATED HOLES ARE UNPLATED.
- RECOMMENDED HOLE PATTERN ON SHEET 3.
- DIMS. A, B, AND C ON SHEET 2.
- PRODUCT MARKING: PART NUMBER AND BATCH I.D.
- DIAMOND LOCATION PEG ARE ONLY EXISTED ON THE BOTH SIDES OF PRODUCT.
- THE PRODUCTS WHERE THE PART NUMBER ENDS IN LF MEET THE EUROPEAN UNION DIRECTIVES AND OTHER COUNTRY REGULATIONS AS DESCRIBED IN GS-22-008.  
 ALL PRODUCTS WILL WITHSTAND EXPOSURE TO 260° FOR 60 SECONDS IN A CONVECTION, INFRA-RED OR VAPOR PHASE REFLOW OVEN.
- FOR LEAD FREE PART NUMBERS, ADD AN 'LF' SUFFIX.  
 EXAMPLE: 94560-111LF

|                       |                   |
|-----------------------|-------------------|
| PLATING CONTACT AREA: |                   |
| DASH NR:              | PERFORMANCE LEVEL |
| -1YY/1YYLF            | TELCORDIA CO      |
| -2YY/2YYLF            | CUSTOMER SPECIAL  |
| -3YY/3YYLF            | CUSTOMER SPECIAL  |

SEE NOTES 9 & 10

|             |           |      |          |                                       |            |         |       |                            |   |                    |  |
|-------------|-----------|------|----------|---------------------------------------|------------|---------|-------|----------------------------|---|--------------------|--|
| mat'l. code |           |      |          | tolerances unless otherwise specified |            |         |       | CUSTOMER COPY              |   | www.fciconnect.com |  |
| SEE NOTES   |           |      |          |                                       |            |         |       |                            |   |                    |  |
| ltr         | ecn no    | clr  | date     | linear                                | .X ±.3     |         |       | projection                 | title                                   |                    |  |
| K           | D606-0217 | CLu  | 6/01/06  |                                       | .XX ±.10   |         |       | MM                         | VERTICAL SIGNAL<br>RECEPT. ASSY. -5 ROW |                    |  |
| L           | D607-0171 | Cenh | 05/25/07 |                                       | .XXX ±.050 |         |       |                            |   |                    |  |
| M           | D608-0171 | TER  | 8/18/08  | angles                                | 0° ±2'     |         |       | product family METRAL (tm) |   | code               |  |
| N           | D609-0068 | Cenh | 06/06/09 | dr                                    | STU STONER | 7/29/96 | MM    |                            | size                                    | 213                |  |
|             |           |      |          | engr                                  | R.DOUTRICH | 7/29/96 | scale |                            | sheet                                   |                    |  |
| H           | V03-0722  | LP   | 8/22/03  | chr                                   | STU STONER | 7/29/96 | 1:1   |                            | 1 of 4                                  |                    |  |
| J           | V05-0572  | TAB  | 7/25/05  | appd                                  | STU STONER | 7/29/96 |       |                            |   |                    |  |
| sheet index | revision  | N    | N        | N                                     | N          |         |       |                            |   |                    |  |
|             | sheet     | 1    | 2        | 3                                     | 4          |         |       |                            |   |                    |  |



www.fciconnect.com

VERTICAL SIGNAL  
RECEPT. ASSY. -5 ROW

product family METRAL (tm) code  
 size dwg no 213  
 94560 sheet 1 of 4

cage code 22526

ACAD

PDM: Rev:N

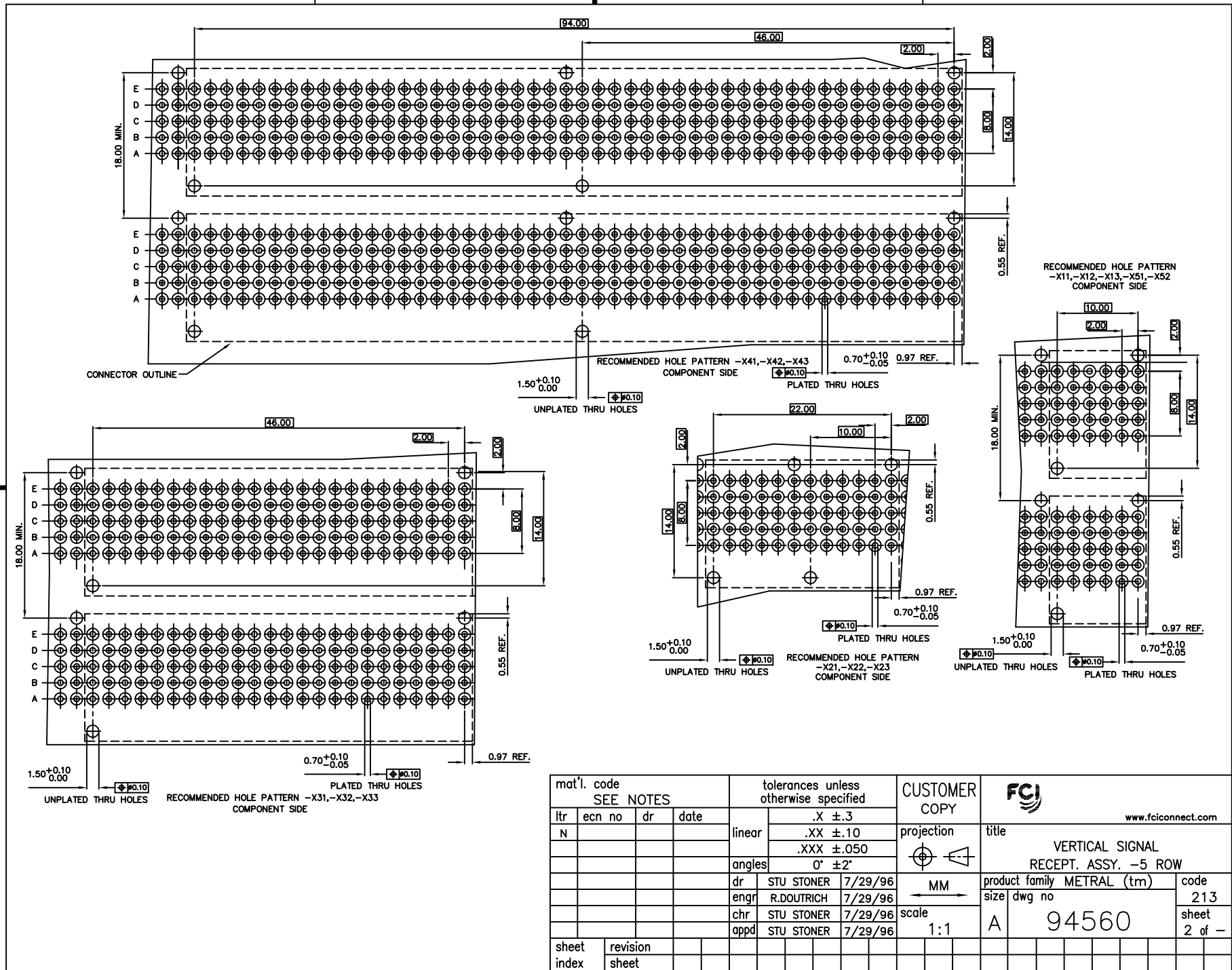
STATUS: Released

Printed: May 19, 2011

Tous droits strictement réservés. Reproduction ou communication à des tiers interdite sous quelque forme que ce soit sans autorisation écrite du propriétaire. Propriété de c FCI. Droits de reproduction FCI.



All rights strictly reserved. Reproduction or issue to third parties in any form whatever is not permitted without written authority from the proprietor. Property of FCI. Copyright FCI.



|                          |                |  |      |                  |                        |                           |   |                |
|--------------------------|----------------|--|------|------------------|------------------------|---------------------------|---|----------------|
| mat'l. code<br>SEE NOTES |                | tolerances unless<br>otherwise specified |      | CUSTOMER<br>COPY |                        | FCI<br>www.fciconnect.com |   |                |
| ltr                      | ecn no         | dr                                       | date | linear           | .X ±.3                 | projection                | title                                   |                |
| N                        |                |  |      | angles           | .XX ±.10<br>.XXX ±.050 |                           | VERTICAL SIGNAL<br>RECEPT. ASSY. -5 ROW |                |
|                          |                |  |      | dr               | STU STONER 7/29/96     |                           |   | product family |
|                          |                |  |      | enr              | R.DOUTRICH 7/29/96     | MM                        | METRAL (tm)                             | 213            |
|                          |                |  |      | chr              | STU STONER 7/29/96     | scale                     | size                                    | dwg no         |
|                          |                |  |      | appd             | STU STONER 7/29/96     | 1:1                       | A                                       | 94560          |
| sheet index              | revision sheet |  |      |                  |                        |                           |   |                |

cage code 22526

Tous droits strictement reserves. Reproduction ou communication a des tiers interdite sous quelque forme que ce soit sans autorisation ecrite du proprietaire. Propriete de c FCI. Droits de reproduction FCI.



All rights strictly reserved. Reproduction or issue to third parties in any form whatever is not permitted without written authority from the proprietor. Property of FCI. Copyright FCI.

| PRODUCT NUMBER * | DIM "A"    | DIM "B" | DIM "C" PCB THK. |
|------------------|------------|---------|------------------|
| 94560-X11        | -----      | 2.65    | 1.6              |
| 94560-X21        | 23.95 REF. | 2.65    | 1.6              |
| 94560-X31        | 47.95 REF. | 2.65    | 1.6              |
| 94560-X41        | 95.95 REF. | 2.65    | 1.6              |

| PRODUCT NUMBER * | DIM "A"    | DIM "B" | DIM "C" PCB THK. |
|------------------|------------|---------|------------------|
| 94560-X12        | -----      | 3.45    | 2.4              |
| 94560-X22        | 23.95 REF. | 3.45    | 2.4              |
| 94560-X32        | 47.95 REF. | 3.45    | 2.4              |
| 94560-X42        | 95.95 REF. | 3.45    | 2.4              |

| PRODUCT NUMBER * | DIM "A"    | DIM "B" | DIM "C" PCB THK. |
|------------------|------------|---------|------------------|
| 94560-X13        | -----      | 4.25    | 3.2              |
| 94560-X23        | 23.95 REF. | 4.25    | 3.2              |
| 94560-X33        | 47.95 REF. | 4.25    | 3.2              |
| 94560-X43        | 95.95 REF. | 4.25    | 3.2              |

\* SEE NOTE 10

A

A

B

B

|                          |                |      |            |  |            |                            |                  |                        |   |
|--------------------------|----------------|------|------------|--|------------|----------------------------|------------------|------------------------|---|
| mat'l. code<br>SEE NOTES |                |      |            | tolerances unless<br>otherwise specified |            |                            | CUSTOMER<br>COPY | <br>www.fciconnect.com |   |
| ltr                      | ecn no         | dr   | date       | linear                                   | .X ±.3     |                            |                  | projection             | title                                   |
| N                        |                |      |            |  | .XX ±.10   |                            |                  |                        |   |
|                          |                |      |            | angles                                   | .XXX ±.050 |                            |                  |                        | VERTICAL SIGNAL<br>RECEPT. ASSY. -5 ROW |
|                          |                |      |            |  | 0° ±2'     |                            |                  |                        |   |
|                          |                | dr   | STU STONER | 7/29/96                                  | <br>MM     | product family METRAL (tm) |                  | code                   |   |
|                          |                | enr  | R.DOUTRICH | 7/29/96                                  |            | size                       | dwg no           | 213                    |   |
|                          |                | chr  | STU STONER | 7/29/96                                  |            |                            |                  | scale                  | A                                       |
|                          |                | appd | STU STONER | 7/29/96                                  |            | 1:1                        | 94560            |                        |   |
| sheet index              | revision sheet |      |            |  |            |                            |                  |                        |   |

Tous droits strictement reserves. Reproduction ou communication a des tiers Interdite sous quelque forme que ce soit sans autorisation écrite du propriétaire. Propriete de c FCI. Droits de reproduction FCI.



All rights strictly reserved. Reproduction or issue to third parties in any form whatever is not permitted without written authority from the proprietor. Property of FCI. Copyright FCI.

| PRODUCT NUMBER * | DIM "A" | DIM "B" | DIM "C" PCB THK. | CONFIGURATION |   |   |   |   |   |   |
|------------------|---------|---------|------------------|---------------|---|---|---|---|---|---|
|                  |         |         |                  | 6             | 5 | 4 | 3 | 2 | 1 |   |
| 94560-X51        | -----   | 4.25    | 3.2              | E             | - | X | - | - | - | - |
|                  |         |         |                  | D             | - | X | - | - | - | - |
|                  |         |         |                  | C             | - | - | - | - | - | - |
|                  |         |         |                  | B             | - | X | - | - | - | - |
|                  |         |         |                  | A             | - | X | X | - | - | - |
| 94560-X52        | -----   | 2.65    | 1.6              | E             | - | X | - | X | - | X |
|                  |         |         |                  | D             | - | X | - | X | - | X |
|                  |         |         |                  | C             | - | X | - | X | - | X |
|                  |         |         |                  | B             | - | X | - | X | - | X |
|                  |         |         |                  | A             | - | X | - | X | - | X |

\* SEE NOTE 10

(-) REPRESENTS AN EMPTY POSITION  
(X) REPRESENTS A LOADED POSITION

|                          |                |    |      |  |            |         |                  |        |   |        |
|--------------------------|----------------|----|------|--|------------|---------|------------------|--------|---|--------|
| mat'l. code<br>SEE NOTES |                |    |      | tolerances unless<br>otherwise specified |            |         | CUSTOMER<br>COPY |        | <br>www.fciconnect.com                  |        |
| ltr                      | ecn no         | dr | date | linear                                   | .X ±.3     |         | projection       | title  |   |        |
| N                        |                |    |      |  | .XX ±.10   |         |                  | <br>MM | VERTICAL SIGNAL<br>RECEPT. ASSY. -5 ROW |        |
|                          |                |    |      | angles                                   | 0° ±2'     |         | <br>1:1          |        | product family METRAL (tm)              |        |
|                          |                |    |      | dr                                       | STU STONER | 7/29/96 |                  | size   |   | 213    |
|                          |                |    |      | enr                                      | R.DOUTRICH | 7/29/96 |                  | dwg no |   | sheet  |
|                          |                |    |      | chr                                      | STU STONER | 7/29/96 |                  | A      |   | 4 of - |
|                          |                |    |      | appd                                     | STU STONER | 7/29/96 |                  |        |   |        |
| sheet index              | revision sheet |    |      |  |            |         |                  |        |   |        |

cage code  
22526

ACAD

PDM: Rev:N

STATUS: Released

Printed: May 16, 2011