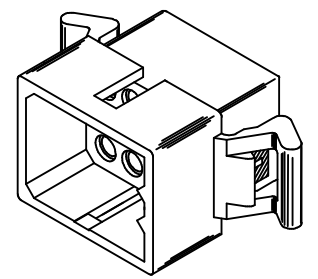


RECEPTACLE HOUSING
(NOT TO SCALE)



PLUG HOUSING
(NOT TO SCALE)

PK SPEC EC NO: UCP2015-0466 DRWN:JDFX 2014/08/05 CHKD:MKJPPER 2014/08/04 APPR:FSMITH 2014/08/14	DESCRIPTION REV	QUALITY SYMBOLS	GENERAL TOLERANCES (UNLESS SPECIFIED)	DIMENSION STYLE IN/MM	SCALE 1:1	DESIGN UNITS INCH	THIRD ANGLE PROJECTION
		▽=0	mm INCH	DRAWN BY DATE GWC 1993/02/01	TITLE .062/(1.57) HOUSINGS, PLUG & RECEPTACLE 12 CKT, 145 CENTERS		
		▽=0	4 PLACES ± --- ± --- 3 PLACES ± --- ± .010 2 PLACES ± 0.25 ± .014 1 PLACE ± 0.36 ± --- 0 PLACE ± ±	CHECKED BY DATE RW 1993/02/01	DOCUMENT NO. SD-1625-12*		
		▽=0	ANGULAR ± 1 °	APPROVED BY DATE RAS 1993/02/01		SHEET NO. 1 OF 2	
J1		DRAFT WHERE APPLICABLE MUST REMAIN WITHIN DIMENSIONS	MATERIAL NO. SEE CHART	THIS DRAWING CONTAINS INFORMATION THAT IS PROPRIETARY TO MOLEX INCORPORATED AND SHOULD NOT BE USED WITHOUT WRITTEN PERMISSION			

PLUG	
PART NO.	ENG. NO.
03-06-2121	1625-12P
03-06-7121	1625-12PBK
03-06-2122	1625-12P1
03-06-7122	1625-12P1BK

RECEPTACLE	
PART NO.	ENG. NO.
03-06-1121	1625-12R
03-06-6121	1625-12RBK
03-06-1122	1625-12R1
03-06-6122	1625-12R1BK OBSOLETE

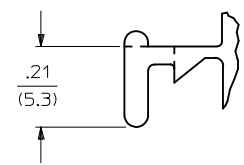
RECEPTACLE LEGEND

1625-12R***

CIRCUIT SIZE
R = RECEPTACLE

BLANK = WITH PREBENT MOUNTING EARS
1 = WITHOUT EARS

COLOR:
BLANK = NATURAL COLOR
AM = AMBER BK = BLACK BU = BLUE
BN = BROWN GY = GRAY GN = GREEN
OR = ORANGERD = RED YW = YELLOW



DETAIL 1

STANDARD MOUNTING EAR
SCALE 4:1

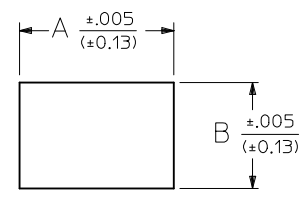
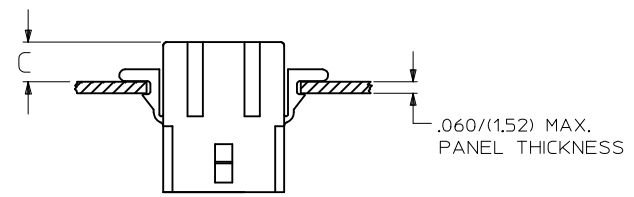
PLUG LEGEND

1625-12P***

CIRCUIT SIZE
P = PLUG

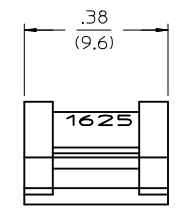
BLANK = WITH PREBENT EARS
1 = WITHOUT EARS

COLOR:
BLANK = NATURAL COLOR
AM = AMBER BK = BLACK BU = BLUE
BN = BROWN GY = GRAY GN = GREEN
OR = ORANGE RD = RED YW = YELLOW



RECOMMENDED HOLE PATTERN

RECEP.	.795 (20.19)	.563 (14.30)		.23 (5.8)
PLUG	.903 (22.94)	.614 (15.60)	.21 (5.3)	.22 (5.5)
PART	DIM. A	DIM. B	DIM. C (STANDARD EAR)	DIM. C (PREBENT EAR)



DETAIL 2

.062/(1.57) PREBENT MOUNTING EAR
SCALE 4:1

- NOTES:
1. MATERIAL: NYLON TYPE 6/6, 94V-2.
 2. FINISH: NONE
 3. PRODUCT SPECIFICATION: PS-02-06
 4. PACKAGING INFORMATION: PK-1625-003
 5. THIS HOUSING FOR USE WITH .062/(1.57) DIA. TERMINALS.

- WHERE DENOTED IN CHART, TOOLS ARE BUILT WITH PREBENT MOUNTING EARS PER DETAIL 2 AND SUPERSEDE ALL TOOLS PREVIOUSLY BUILT WITH THE STANDARD MOUNTING EARS.
- CIRCUIT I.D. NUMBERS APPEAR ON PARTS FROM TOOLS BUILT AFTER 2/1/93.

SEE SHEET 1 EC NO: UCP2015-0466 DRWN: JDFX 2014/08/05 CHKD: HKIPPER 2014/08/04 APPR: FSMITH 2014/08/14	QUALITY SYMBOLS	GENERAL TOLERANCES (UNLESS SPECIFIED)	DIMENSION STYLE IN/MM	SCALE 1:1	DESIGN UNITS INCH	THIRD ANGLE PROJECTION
	= 0	4 PLACES ± --- ± ---	DRAWN BY DATE GWC 1993/02/01	.062/(1.57) HOUSINGS, PLUG & RECEPTACLE 12 CKT, 145 CENTERS molex SD-1625-12* SHEET NO. 2 OF 2		
	= 0	3 PLACES ± --- ± .010	CHECKED BY DATE RW 1993/02/01			
	= 0	2 PLACES ± 0.25 ± .014	APPROVED BY DATE RAS 1993/02/01			
= 0	1 PLACE ± 0.36 ± ---	MATERIAL NO. DOCUMENT NO.				
REV J1	ANGULAR ± 1 °	DRAFT WHERE APPLICABLE MUST REMAIN WITHIN DIMENSIONS	SEE CHART			
THIS DRAWING CONTAINS INFORMATION THAT IS PROPRIETARY TO MOLEX INCORPORATED AND SHOULD NOT BE USED WITHOUT WRITTEN PERMISSION						