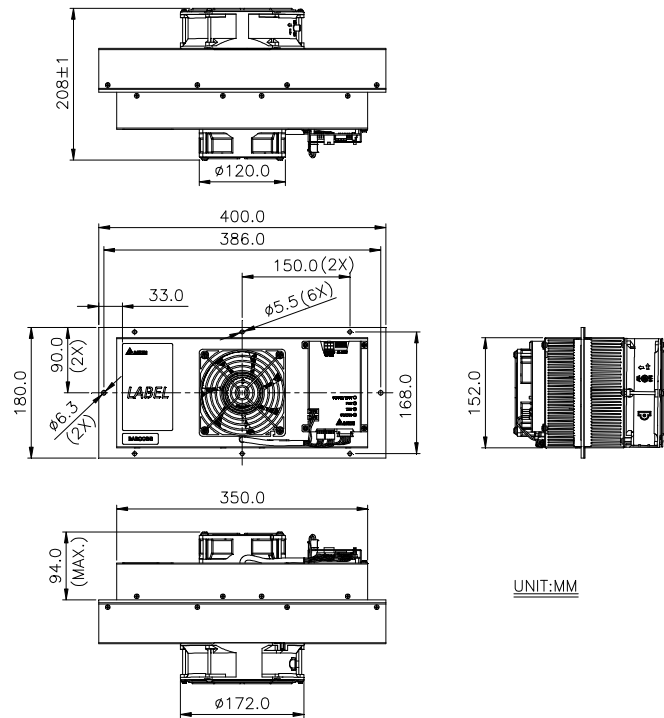


HET200PB series

Dimension drawing



Features

- ◆ IP55 waterproof at external side
- ◆ FAN / TEC / Control fail alarm
- ◆ Clear LED status indicator
- ◆ High efficiency and reliable fan modules

Design

- ◆ High efficiency of cooling & Heating
- ◆ Thermal electric cooling module
- ◆ Rated voltage at 48V
- ◆ Built-in controller

Main feature	Unit	Specification
Dimension (H x W x D)	mm	180 x 400 x 208
Cooling Capacity ($\Delta T = 0\text{ }^{\circ}\text{C}$)	W	200
Rated voltage	Vdc	48 (TYP.)
Operating voltage range	Vdc	40 ~ 56
Rated current	A	6.7
Power consumption	W	321.6
Operating temperature range	$^{\circ}\text{C}$	-40 ~ +55
Weight	Kg	9.0

* Specifications are subject to change without notice.