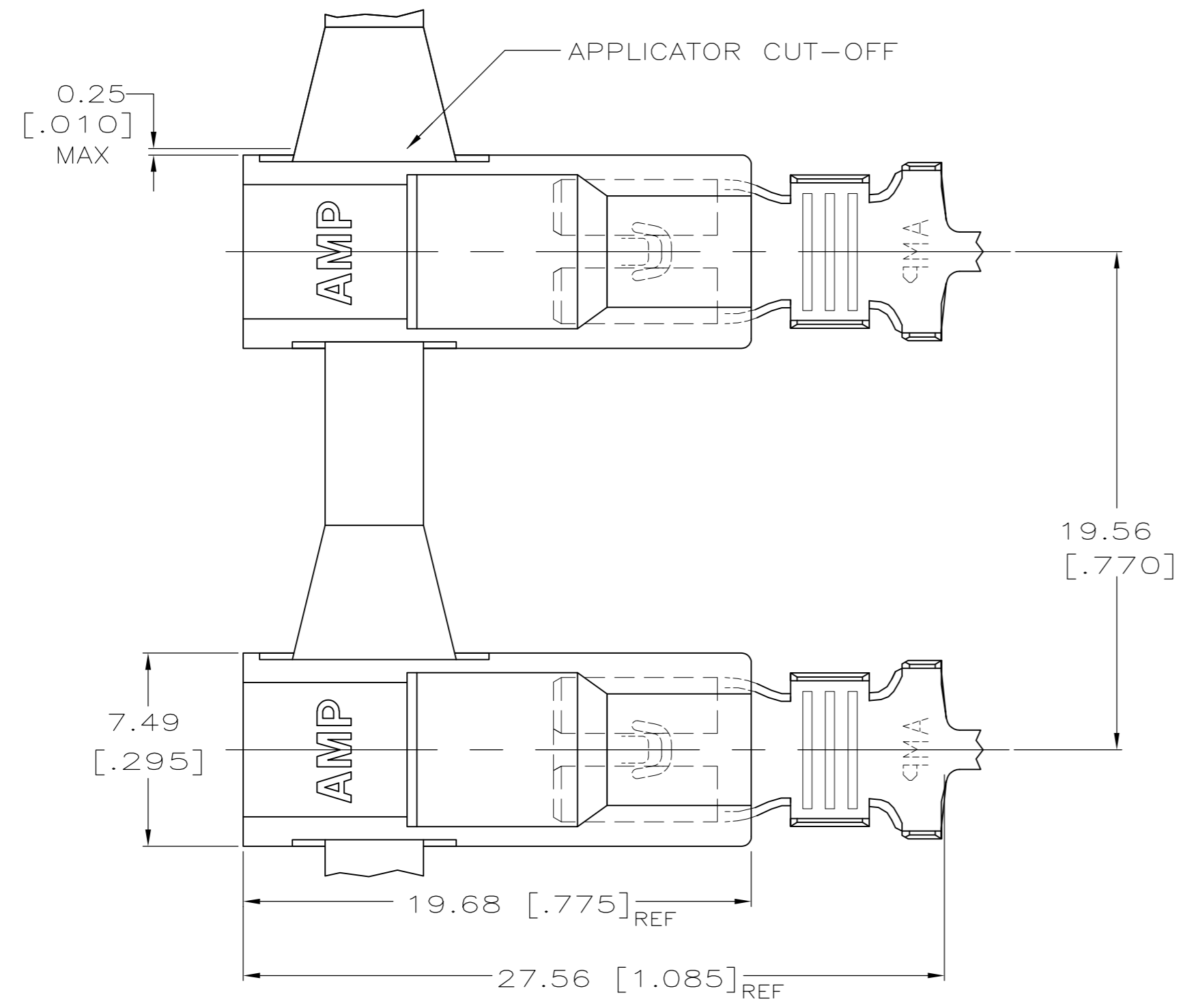
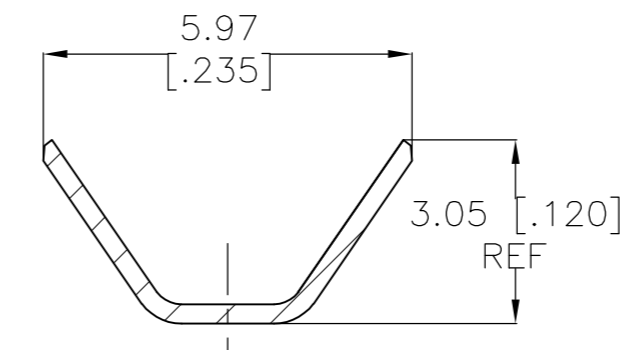


THIS DRAWING IS UNPUBLISHED. RELEASED FOR PUBLICATION
 © COPYRIGHT - By - ALL RIGHTS RESERVED.

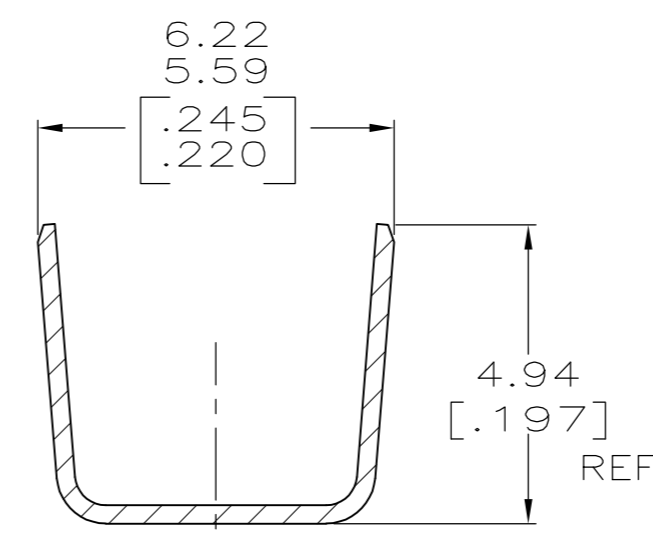
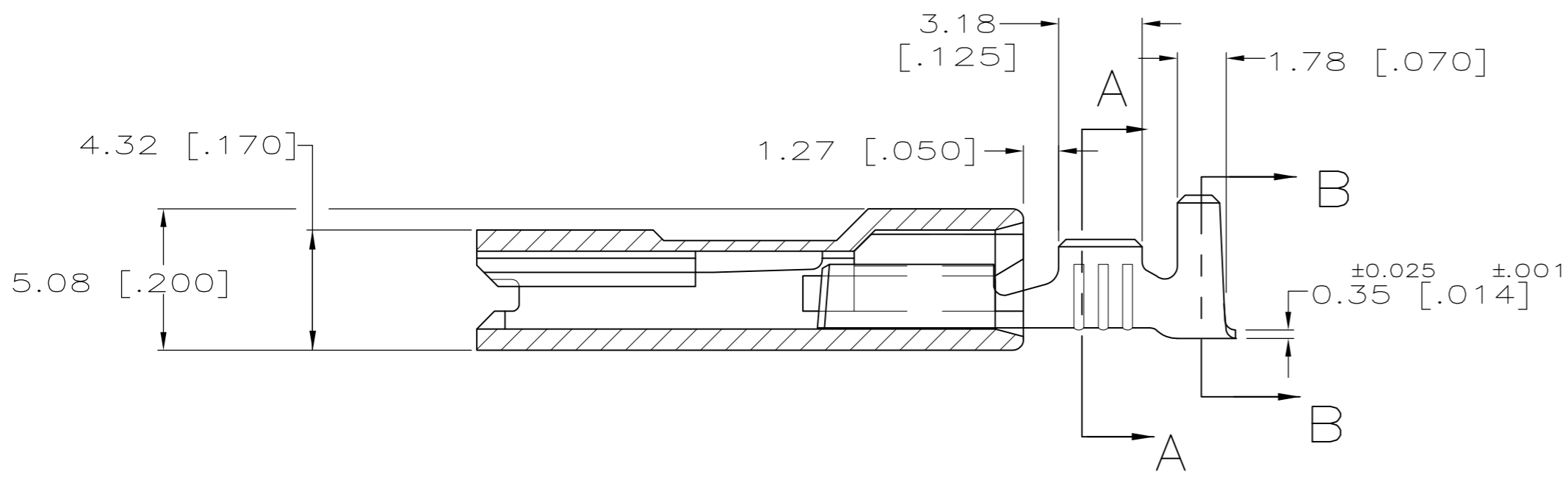
LOC	DIST	REVISIONS			
P	LTR	DESCRIPTION	DATE	DWN	APVD
AF	50				
		D	REVISED PER ECR-12-013219	08JAN13	KH KR



- 1 WIRE RANGE IS [#18-#16 OR TWO #18'S OR TWO #20'S] AWG.
- 2 INSULATION RANGE IS 2.67-5.33 DIA OR TWO AT 2.67 DIA MAX, [.105-.210 OR TWO AT .105 DIA MAX].
- 3 TIN PLATE PER MIL-T-10727 0.001016 [.000040] MIN.
- 4 GLOW WIRE APPROVED; CONTACT TE ENGINEERING FOR SPECIFICATION (ALL WALL THICKNESSES ARE BETWEEN 0.4-3.0 [.015-.118])
- 5 PRELIMINARY - NOT FOR PRODUCTION



SECTION A-A
SCALE 8:1



SECTION B-B
SCALE 8:1

3 TIN PLATE	2	1	0.508 [.020]	521995-2 4
-				521995-1 5
TERMINAL FINISH	INSULATION RANGE	WIRE SIZE	MATING TAB THK ±0.025 [±.001]	PART NO
THIS DRAWING IS A CONTROLLED DOCUMENT.		DWN RAGHAVENDRA 31JAN07	TE Connectivity	
DIMENSIONS: mm [INCHES]		CHK G.D.PORTA 31JAN07		
TOLERANCES UNLESS OTHERWISE SPECIFIED:		APVD G.D.PORTA 31JAN07	NAME	
0 PLC ± -		PRODUCT SPEC	ASSEMBLY, RECEPTACLE, ULTRA-POD, 4.8 [.187] SERIES	
1 PLC ± -		APPLICATION SPEC	SIZE CAGE CODE DRAWING NO RESTRICTED TO	
2 PLC ± -		108-1285	A2 00779 C=521995	
3 PLC ± 0.25 [.010]		114-2124	SCALE 5:1 SHEET 1 of 1 REV D	
4 PLC ± -		WEIGHT -		
ANGLES ± -		CUSTOMER DRAWING		
MATERIAL	FINISH			
TERMINAL - BRASS	TERMINAL - SEE TABLE			
HOUSING - V2 NYLON	HOUSING - NATURAL(WHITE)			