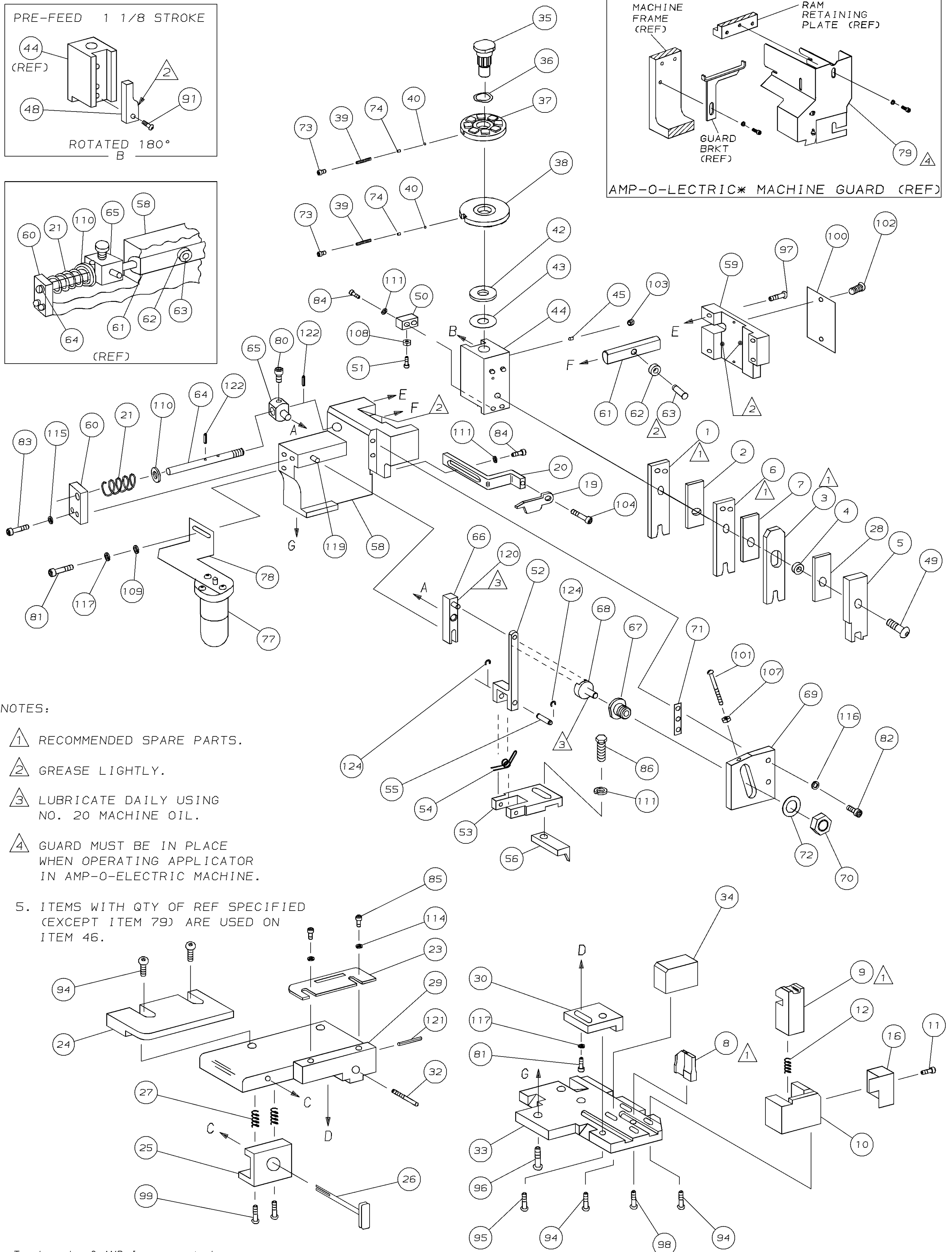
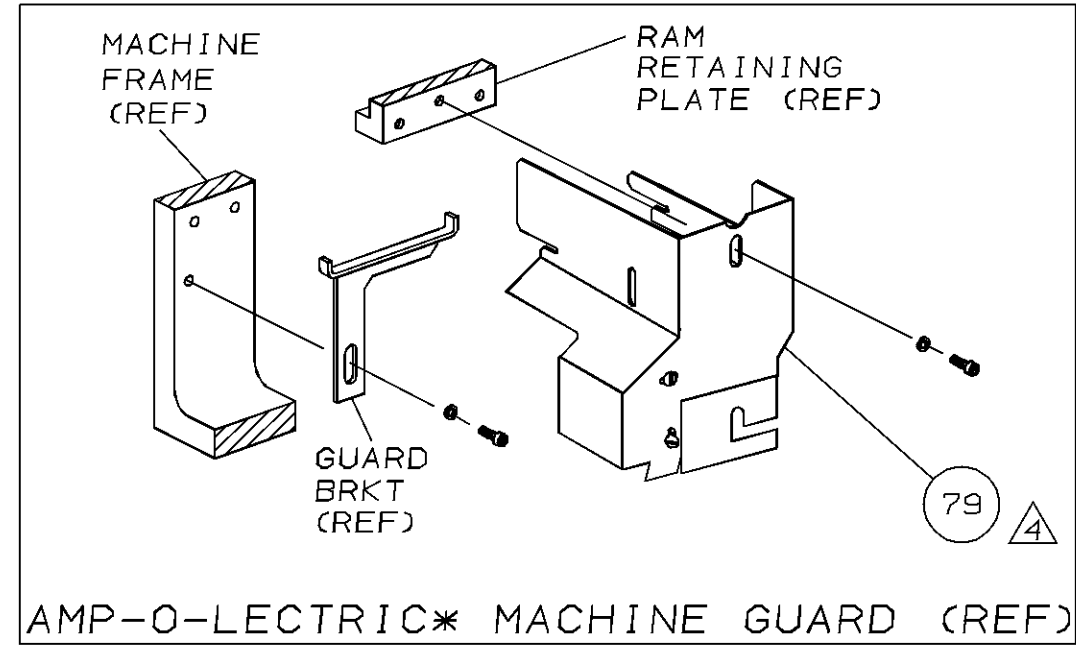
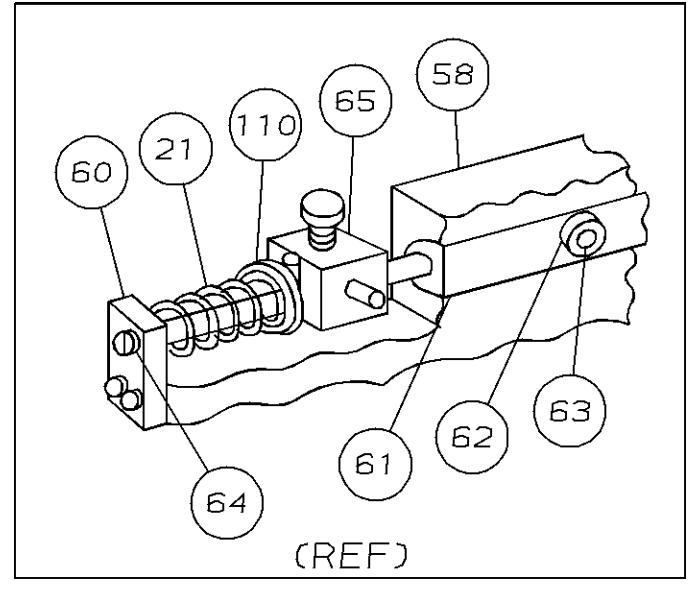
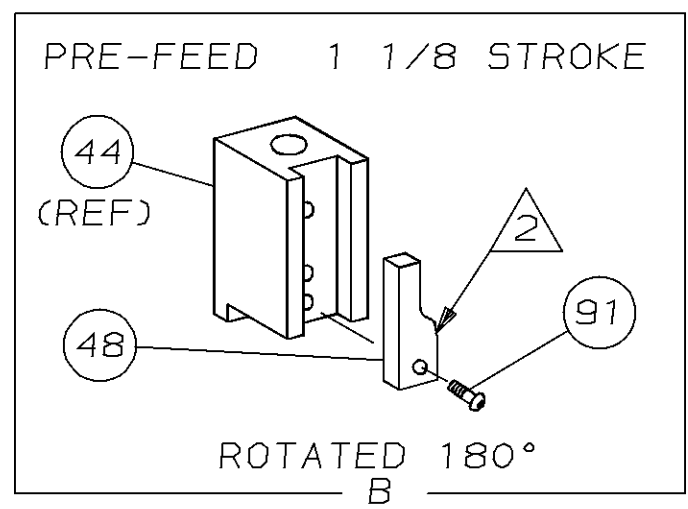


THIS DRAWING IS A CONTROLLED DOCUMENT FOR AMP INCORPORATED. IT IS SUBJECT TO CHANGE AND THE CONTROLLING ENGINEERING ORGANIZATION SHOULD BE CONTACTED FOR THE LATEST REVISION.



- NOTES:
- 1 RECOMMENDED SPARE PARTS.
 - 2 GREASE LIGHTLY.
 - 3 LUBRICATE DAILY USING NO. 20 MACHINE OIL.
 - 4 GUARD MUST BE IN PLACE WHEN OPERATING APPLICATOR IN AMP-O-ELECTRIC MACHINE.
 - 5. ITEMS WITH QTY OF REF SPECIFIED (EXCEPT ITEM 79) ARE USED ON ITEM 46.

REF	QTY	PART NO	DESCRIPTION	ITEM NO
REF		21045-3	RING, RET "C" (.187ø) FEED FINGER PIN	124
REF		5-21028-1	PIN, SLT SPR (.125øx.50) ADJ ROD	123
1		4-21028-0	PIN, SLT SPR (.093øx.75) ST GUIDE PL	122
REF		1-21030-1	PIN, DOWEL (.187øx.50) LEVER	121
REF		1-21030-6	PIN, DOWEL (.187øx1.25) HOUSING	120
2		21024-5	WASHER, LOCK (NO. 10) ADJ BLOCK	119
REF		21024-5	WASHER, LOCK (NO. 10) ADJ PLATE	118
REF		21024-5	WASHER, LOCK (NO. 10) FEED GUIDE ROD	117
2		21024-2	WASHER, LOCK (NO. 4) FRONT STRIP GUIDE	116
				115
				114
				113
				112
4		21024-4	WASHER, LOCK (NO. 8) STRIPPER	111
REF		21899-4	WASHER, FLAT (5/16 DIA) SCREW ADJ	110
1		21899-2	WASHER, FLAT (NO. 10) LUB ASSY	109
1		21018-5	NUT, HEX (NO. 6) HOLDDOWN	108
REF		21018-5	NUT, HEX (6-32) FEED ADJ	107
				106
				105
1		456567-1	SCR, SHLD (.188øx.125) STRIPPER	104
1		21009-2	SCR, SKT SET (1/4-20x.25) LOC-WEL) RAM	103
2		21017-2	SCR, DRIVE (#2x.19) ID PLATE	102
REF		6-23715-5	SCR, PAN HD (6-32x1.50) FEED ADJ	101
1		461264-1	PLATE, IDENTIFICATION	100
2		2-21002-9	SCR, BHC (10-32x.75) DRAG	99
1		22733-8	SCR, BHC (8-32x.38) LOC-WEL) ANVIL	98
REF		2-21002-9	SCR, BHC (10-32x.75) CAP	97
REF		2-22733-8	SCR, BHC (1/4-20x.62) HOUSING	96
REF		2-21002-7	SCR, BHC (10-32x.50) SG ADJ BLOCK	95
6		2-21002-2	SCR, BHC (8-32x.50) SHEAR	94
				93
				92
1		1-21002-7	SCR, BHC (6-32x.38) CAM	91
				90
				89
				88
				87
1		2-22603-0	SCR, HEX HEAD (8-32x.31) FEED FINGER	86
2		1-21000-3	SCR, SKT CAP (4-40x.25) F STRIP GUIDE	85
3		2-21000-7	SCR, SKT CAP (8-32x.50) STRIPPER	84
REF		3-21000-7	SCR, SKT CAP (10-32x.75) FEED ROD GD	83
REF		3-21000-6	SCR, SKT CAP (10-32x.62) FEED ADJ BLK	82
2		3-21000-4	SCR, SKT CAP (10-32x.38) SG ADJ BL	81
REF		3-21000-4	SCR, SKT CAP (10-32x.38) PIVOT BLOCK	80
REF		449755-1	GUARD WINDOW	79
1		1-465184-0	LUBRICATOR ASSY	78
1		22014-1	OIL, SYNTHETIC	77
				76
				75
2		690603-1	SPRING, ASSIST	74
2		23030-1	SCR, SKT CAP (6-32x.25) CP DISC	73
REF		458109-1	WASHER, SPECIAL	72
REF		690517-1	SPACER	71
REF		22594-8	NUT, HEX	70
REF		240628-1	PLATE, ADJUSTMENT	69
REF		240626-1	SHAFT, PIVOT	68
REF		240633-1	BUSHING	67
REF		455680-1	LEVER, INTERMEDIATE	66
REF		240629-1	BLOCK, PIVOT	65
REF		240632-2	SCREW, ADJUSTMENT FEED ROD	64
REF		240659-3	PIN, CAM ROLLER	63
REF		240658-1	ROLLER, CAM	62
REF		454398-2	ROD, FEED	61
REF		454178-1	GUIDE, FEED ROD	60
				59
				58
				57
				56
				55
				54
				53
				52
				51
				50
				49
				48
				47
				46
				45
				44
				43
				42
				41
				40
				39
				38
				37
				36
				35
				34
				33
				32
				31
				30
				29
				28
				27
				26
				25
				24
				23
				22
				21
				20
				19
				18
				17
				16
				15
				14
				13
				12
				11
				10
				9
				8
				7
				6
				5
				4
				3
				2
				1

REMARKS	NO	REV
APPL USED ON MACHINE PART NO	MACH SERIAL NO	DISTRIBUTION
CUSTOMER NAME	APPL SERIAL NO	ORIGINAL
ADDRESS	PURCHASE ORDER	CUSTOMER COPY
CITY	ENG APP	FIELD ENG COPY

CRIMPING DATA				APPLICATOR WILL APPLY
PAD LTR	CRIMP HEIGHT	WIRE SIZE	WIRE STRIP LENGTH	
A	.059	16		170353-1
B	.053	18		170353-2
C	.048	20		
D	NOT USED			
CRIMP SIZE	TYPE	FEED	APPL INST	
WIRE .090	F	.472	AI 8040	
INSUL .130	F			
WIRE RANGE	INSULATION RANGE	MACHINE NO		
20-16	.079-.114	565435-5		

AMP-O-ELECTRIC PRE-FEED

1 1

SET UP GAGE	10-1	AMP INCORPORATED
458637-1	L1387	Harrisburg, Pa.
DR 9/11/90	APP 9-20-90	
P. WATHIAS	BA WOLFE	
CHK 9-20-90	REL 9-20-90	
C. ERISMAN	B. MEYERSON	
LOC A	NO 567379-2	REV A

NAME: MINIATURE QUICK CHANGE APPLICATOR
SIDE FEED (PULSE LOCK CONTACT)