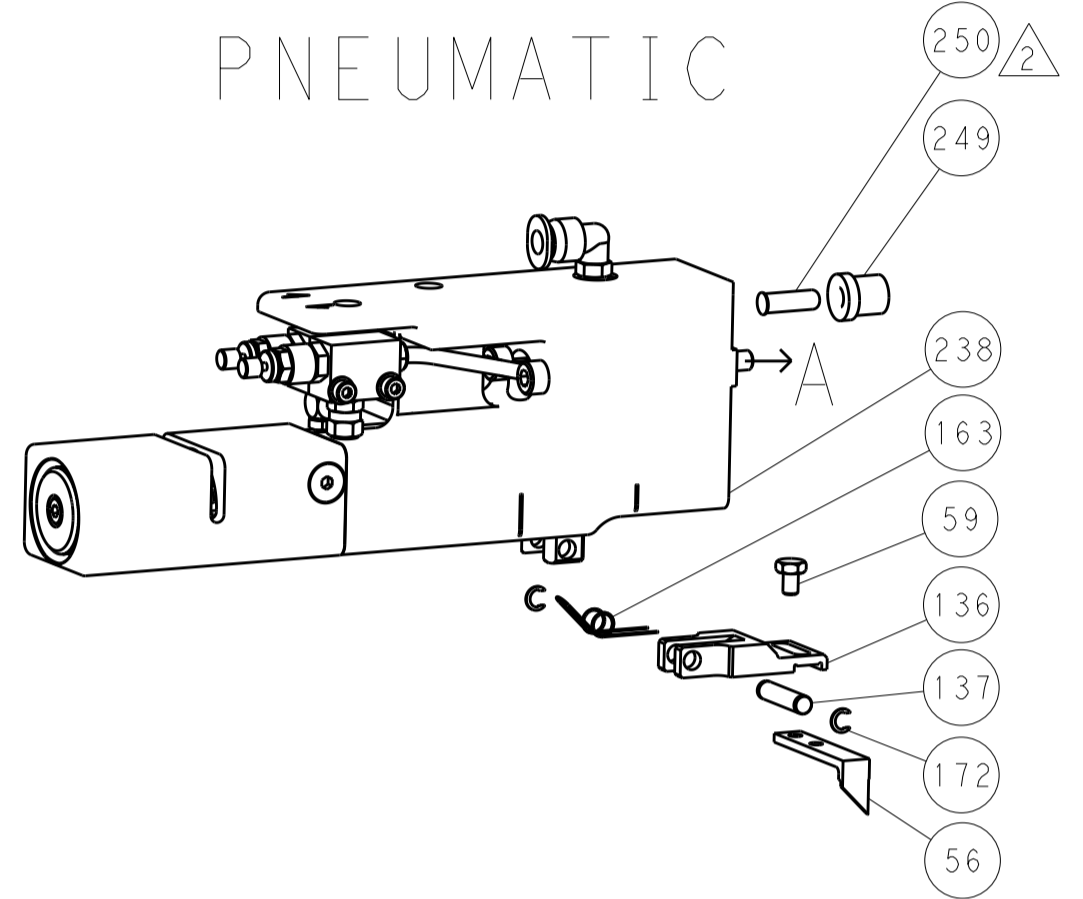


LOC		DIST		REVISIONS			
A	66	P	LTM	DESCRIPTION	DATE	OWN	APVD
		-	-	SEE SHEET 1	-	-	-

FEED TYPE MECHANICAL



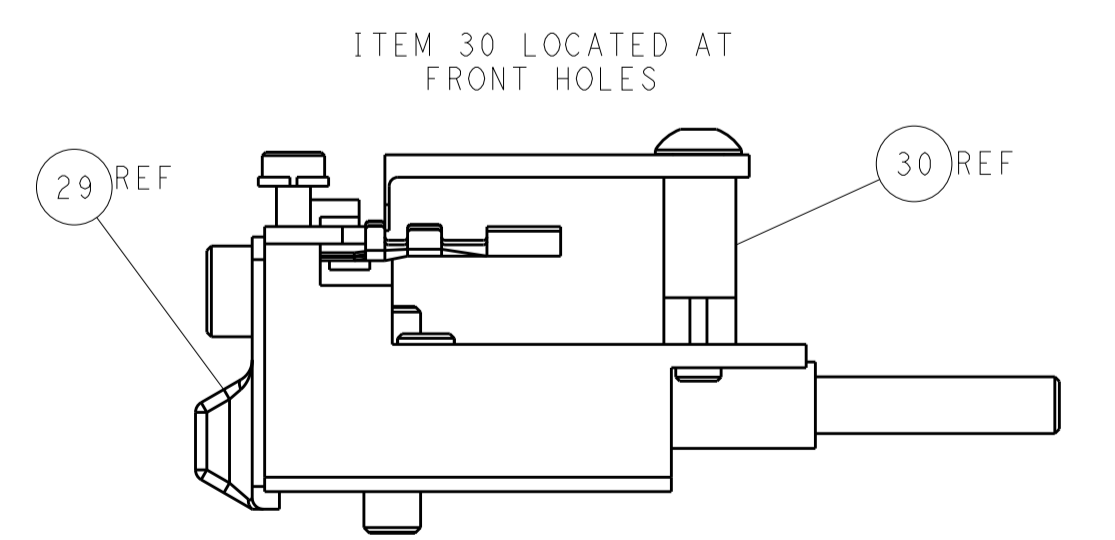
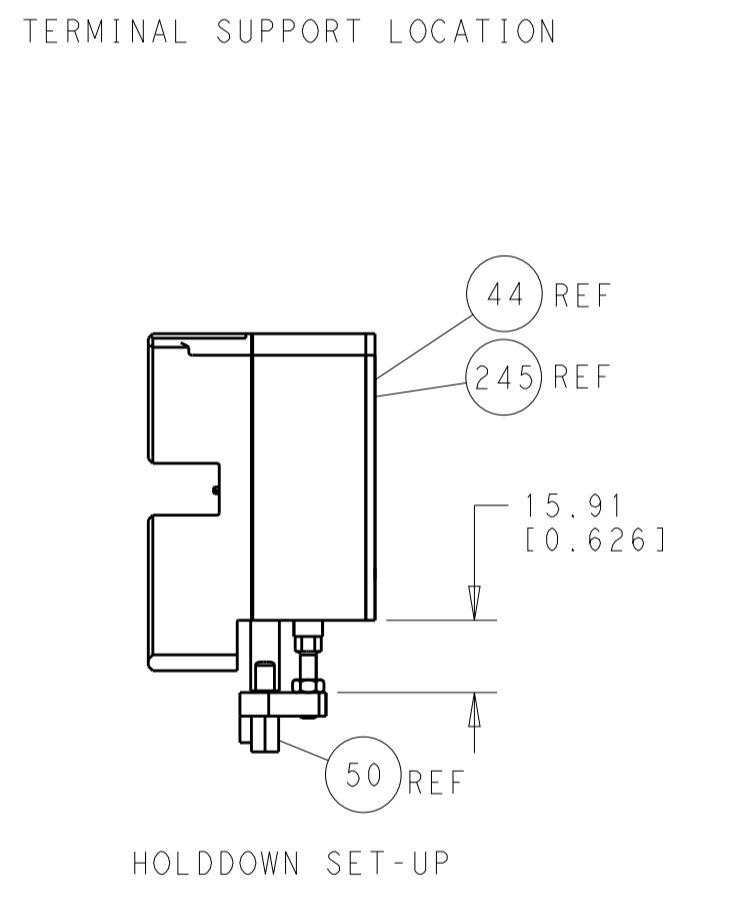
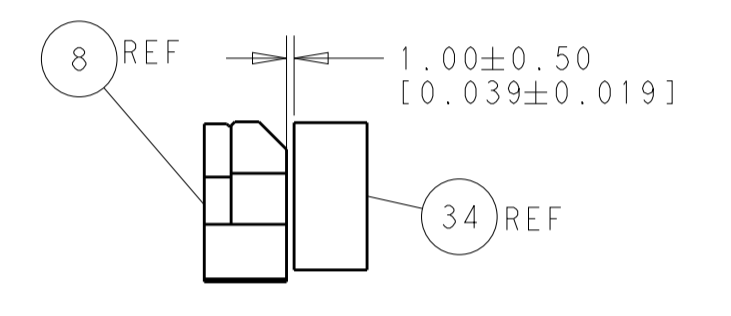
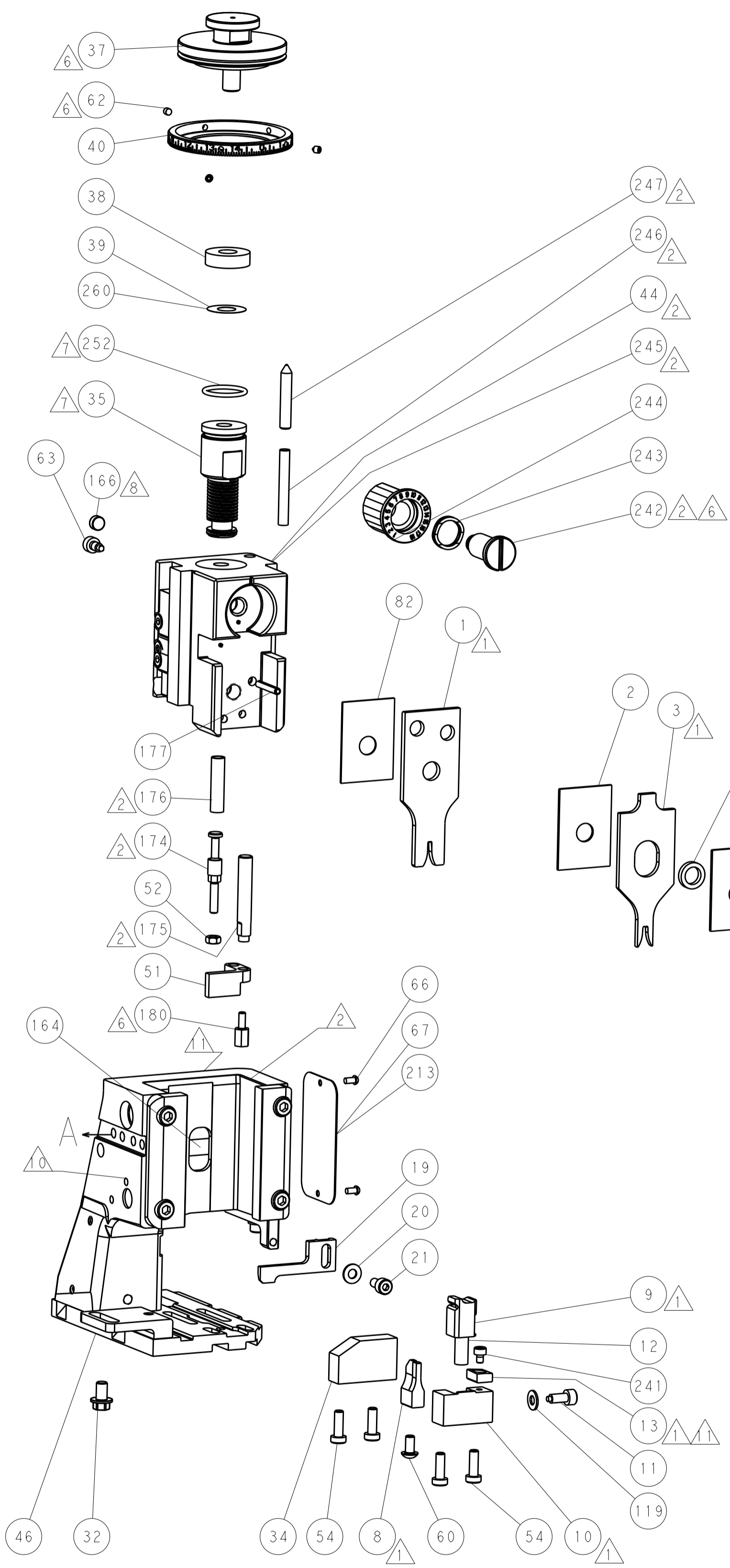
PNEUMATIC



SERVO LATCH PLATE



CAM POSITIONS



ATLANTIC VERSION
 Shown on sheets 1 of 4 & 2 of 4
 (Pacific version shown on sheets 3 of 4 & 4 of 4)

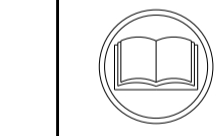
DIMENSIONS:		TOLERANCES UNLESS OTHERWISE SPECIFIED:		DWN R. O. WILSON 05FEB2013		TE Connectivity	
mm	0 PLC ±0.1	1 PLC ±0.1	2 PLC ±0.02	3 PLC ±0.005	4 PLC ±0.0005	APVD T. L. ELBIN 05FEB2013	Harrisburg, PA 17105-3608
MATERIAL:		FINISH:		NAME Ocean Side Feed Applicator		RESTRICTED TO	
Customer Accessible Production Drawing		SCALE 1:1		SHEET 2 of 4		REV A	

THIS DRAWING IS UNPUBLISHED. RELEASED FOR PUBLICATION. COPYRIGHT © BY TYCO ELECTRONICS CORPORATION. ALL RIGHTS RESERVED. PACIFIC VERSION TERMINATOR INTERFACE ADAPTER. PART NUMBER, REVISION, DESCRIPTION, FEED TYPE, CONVERT TO, PART NUMBERS REQUIRED.

APPLICATOR DATA. CRIMP SIZE TYPE, WIRE INSUL. APPLICATOR INSTRUCTIONS 408-10389.

TERMINAL DATA: NIPPON TERMINAL NIPPON CRIMP SPECIFICATION. WIRE STRIP LENGTH, INSULATION DIAMETER RANGE. TERMINAL APPLICATION SPECIFICATION. TERMINALS APPLIED.

WIRE SIZE, CRIMP HEIGHT mm [INCH], CRIMP HEIGHT REFERENCE SETTING.



- RECOMMENDED SPARE PARTS. GREASE BEARING SURFACES LIGHTLY. LUBRICATE DAILY PER THE APPLICATOR INSTRUCTION SHEET SUPPLIED WITH THE APPLICATOR. APPLICATOR SPECIFIC DATA TO BE ENTERED INTO BLANK MEMORY CHIP AT ASSEMBLY. APPLY PART NUMBER 1-23419-5 LOCTITE TO THREADS OF ITEMS 62, 180 & 242. GREASE THREADS, GROOVE AND O-RING ON ITEMS 139 & 152. MAGNET MUST BE ORIENTED CORRECTLY IN ORDER TO PROPERLY ACTUATE THE COUNTER. CRIMP HEIGHT REFERENCE SETTING WAS THE SETTING USED WHEN THE APPLICATOR WAS QUALIFIED AT THE FACTORY. SPARE FEED CAM STORAGE LOCATION REFER TO INSTRUCTION SHEET FOR ADDITIONAL INFORMATION. TO CONVERT THE APPLICATOR TO A NON-CARRIER CUTTING STYLE...

*WARNING ON INSTALLATION, SET WIRE DISC, ITEM 40 TO LARGEST WIRE SIZE SETTING. USE OF SETTINGS BELOW MINIMUM REQUIRED CRIMP HEIGHT SETTING WILL CAUSE DAMAGE TO CRIMP TOOLING.

Table with columns: Part No, Description, Item No. Items include: 2119782-1 FINE ADJUST HEAD ASM, PACIFIC STYLE; 2119640-1 PUSH ROD, AIR FEED; 2079988-1 BUSHING, LCH5-12, MISUMI.

PACIFIC VERSION Shown on sheets 3 of 4 & 4 of 4 (Atlantic version shown on sheets 1 of 4 & 2 of 4)

SET UP GAUGE 2119599-1, Loc A, Dist 66, REVISIONS table.

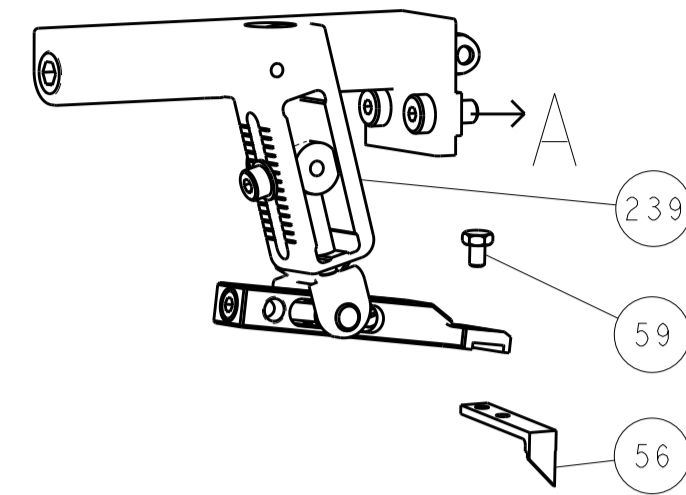
Large assembly list table with columns: Quantity, Part No, Description, Item No. Includes items like SPRING, COMPRESSION; WASHER, WAVE SPRING; RETAINER, INSULATION DIAL; SCR, SKT HD CAP M3 X 4.0; SHCS, LOW HEAD, RoHS, M5 X 16; AIR FEED MODULE; TAG, IDENTIFICATION; SPACER, FEEDER; STANDOFF, HOLD-DOWN; PIN, SLOTTED SPRING 3.0 X 20.0; SPRING, COMPRESSION; GUIDE PIN, HOLDDOWN; GUIDE PIN, HOLDDOWN; RING, RETAIN, EXTERN, 3/16 CRESCENT; MAGNET, RARE EARTH HIGH ENERGY; COUNTER, MAGNETIC; SPRING, FEED FINGER; O-RING, .801 ID, .070 DIA. MAT.; FEED CAM, AIR FEED; DETENT PIN; SCR, BHSC, RoHS (M4 X 16); SHCS, LOW HEAD, RoHS, M4 X 20; FEED CAM, POST FEED; APPLICATOR BASIC ASSEMBLY, SF; RAM, ASIAN STYLE, SIDE FEED; BOLT, ADJUSTMENT; PIN, RETAIN, GRVD, 3/16 X .854; HOLDER, FEED FINGER, AF; MEMORY CHIP, PROGRAMMED; SERVO FEED LATCH ASM; WASHER, FLAT, REG M4; FEED FINGER ASSEMBLY, SF; SPACER, CRIMPER; DOCUMENTATION PACKAGE; TAG, IDENTIFICATION; SCREW, DRIVE, RH, RoHS; LIMITER, ADJUSTMENT BOLT; SCR, SET, SOC, CONE POINT, M3 x 4.0; SCR, HEX HD CAP, M4 X 6.0; PAWL, FEED; NUT, HEX, REG, RoHS, M3.5; HOLDDOWN, TERMINAL; SCR, SKT HD CAP M4 X 6.0; FEED CAM, PRE FEED; SCR, BHSC, RoHS (M8 X 25); DISC, NUMBERED FA WIRE ADJUSTMENT; APPLICATOR SHIM PACK; RAM WASHER, PRECISION; SUPPORT, TERMINAL; SCR, BHSC, RoHS (M4 X 20); HEX HEAD, FLANGED, M5 x 8mm LONG; SPACER, STRIP GUIDE; ASSEMBLY, STRIP GUIDE; SPACER, CRIMPER; STRIP GUIDE; SCR, SKT HD CAP, RoHS, M4 X 8.0; WASHER, FLAT, REG M4; STRIPPER, SIDE FEED; INSERT, SHEAR; SPRING, COMPRESSION; STOP, SHEAR; SHEAR HOLDER, FRONT; FLOATING SHEAR, FRONT; ANVIL, COMBINATION; DEPRESSOR, SHEAR; BLOCK, CRIMPER SPACER; CRIMPER, INSULATION F PREMIUM; SPACER, CRIMPER; CRIMPER, WIRE.

Technical drawing information including dimensions, tolerances, material, finish, weight, scale, and sheet number. Includes STC logo and contact information for TE Connectivity.

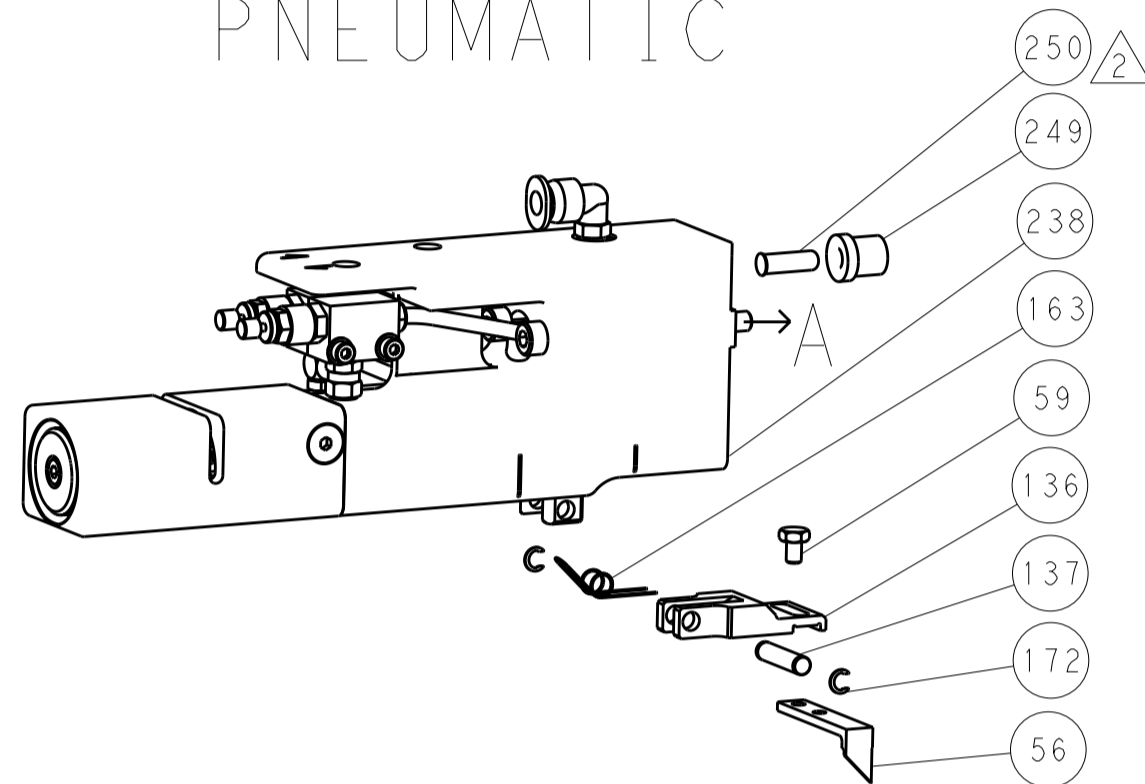
LOC		DIST		REVISIONS			
A	66	P	LTM	DESCRIPTION	DATE	OWN	APVD
		-	-	SEE SHEET 1	-	-	-

DIMENSIONING AND TOLERANCING PER ASME Y14.5M-2003

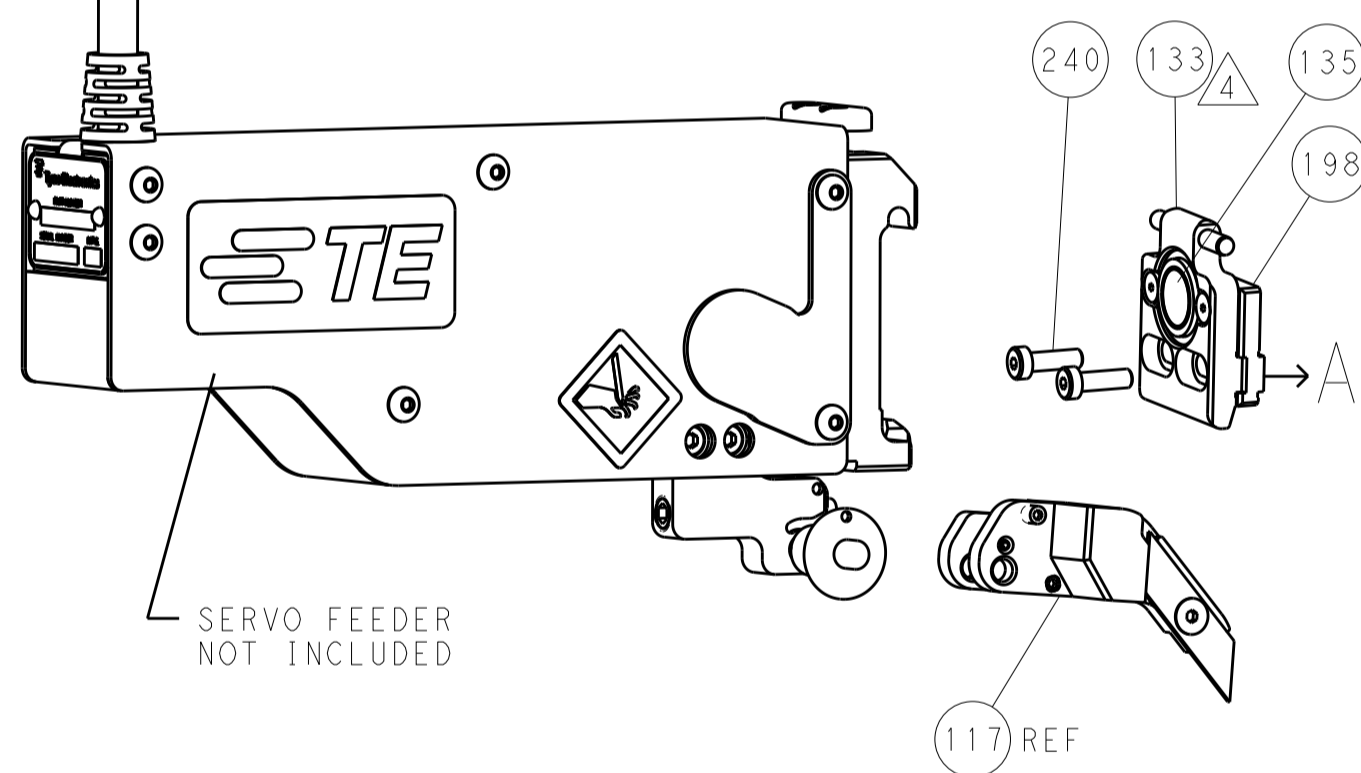
FEED TYPE MECHANICAL



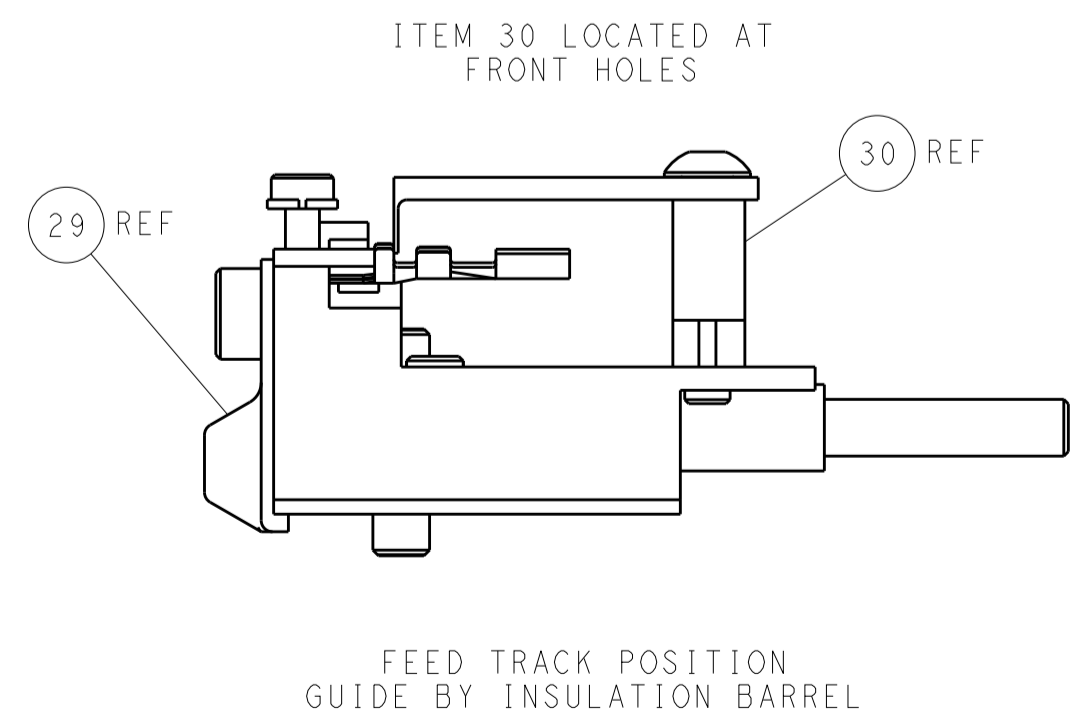
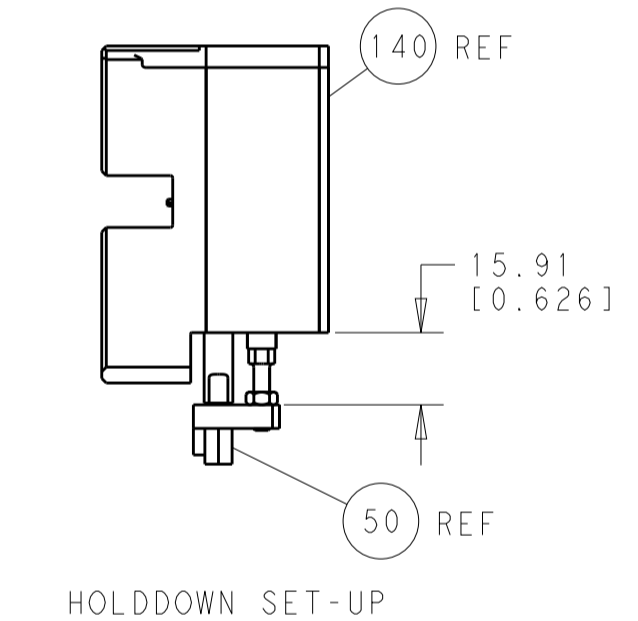
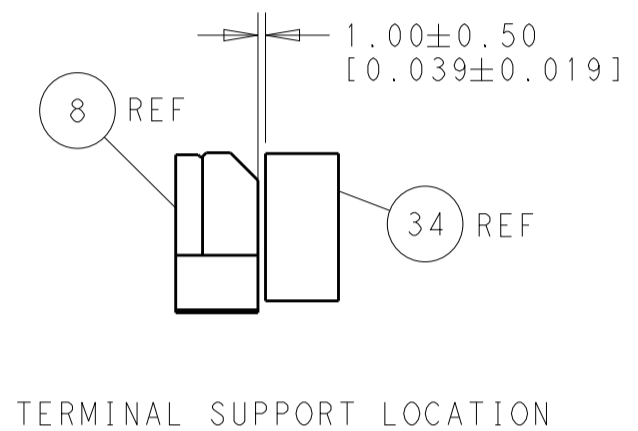
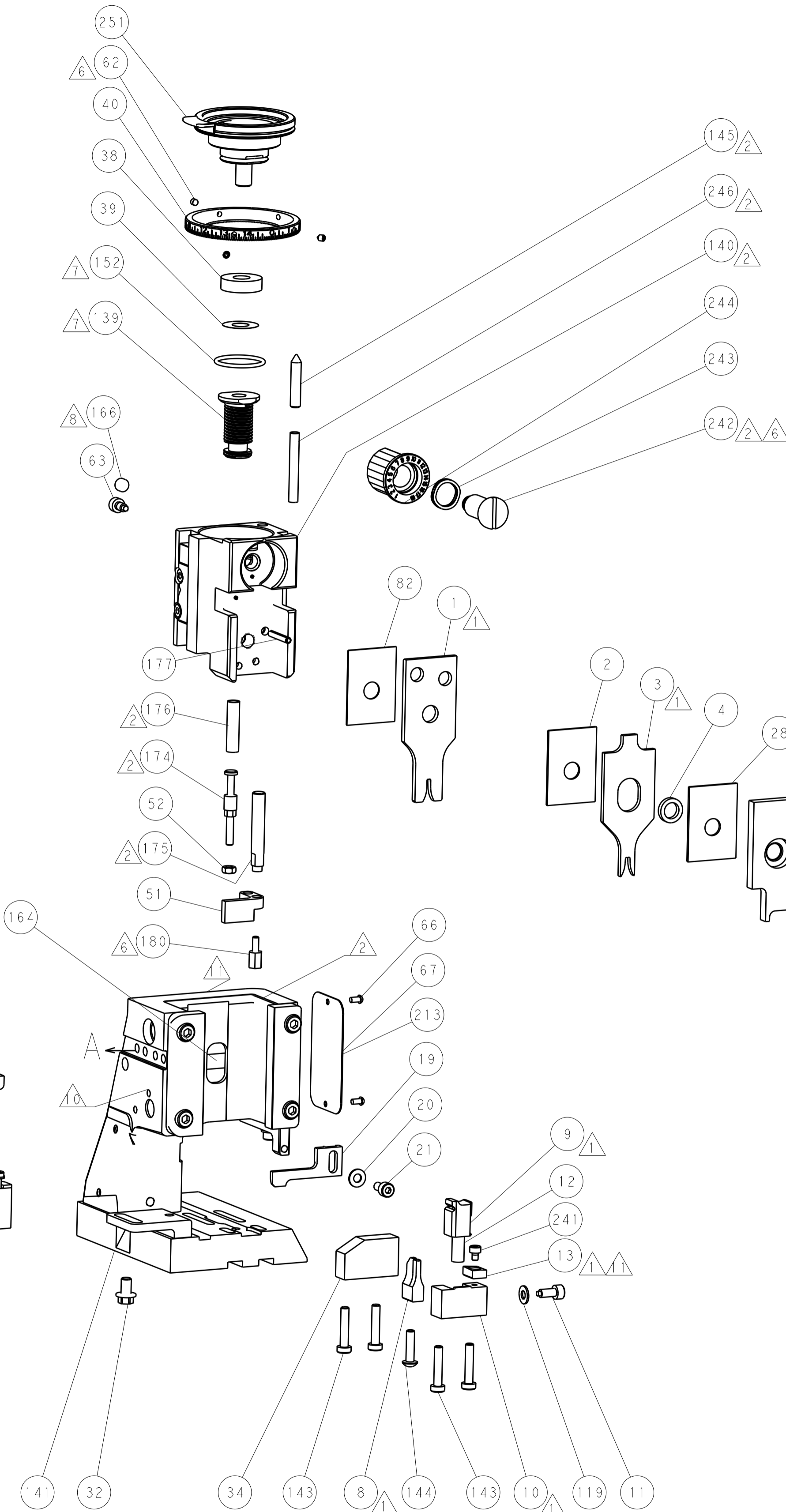
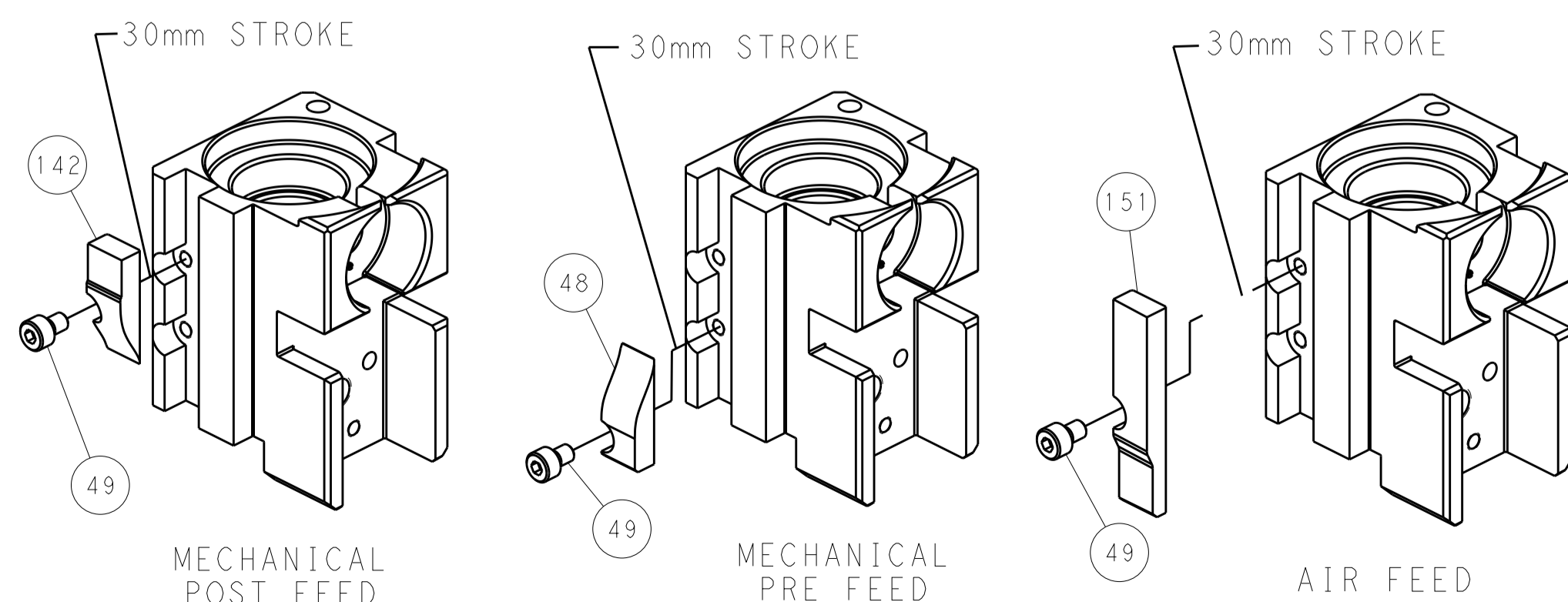
PNEUMATIC



SERVO LATCH PLATE



CAM POSITIONS



PACIFIC VERSION
 Shown on sheets 3 of 4 & 4 of 4
 (Atlantic version shown on sheets 1 of 4 & 2 of 4)

DIMENSIONS:		TOLERANCES UNLESS OTHERWISE SPECIFIED:		DWG: R. O. WILSON 05FEB2013		TE Connectivity	
mm	0 PLC ±0.1	1 PLC ±0.1	2 PLC ±0.02	3 PLC ±0.005	4 PLC ±0.0005	APVD: T. L. ELBIN 05FEB2013	Harrisburg, PA 17105-3608
MATERIAL:		FINISH:		NAME: Ocean Side Feed Applicator		RESTRICTED TO:	
				SIZE: A1		CAGE CODE: 00779	
				DRAWING NO: 2151869		SCALE: 1:1	
				SHEET: 4		REV: A	