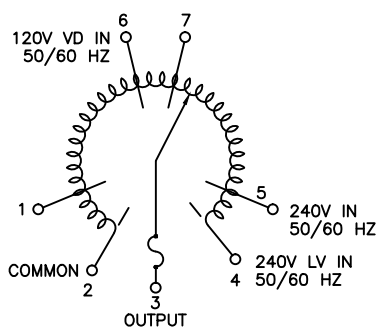
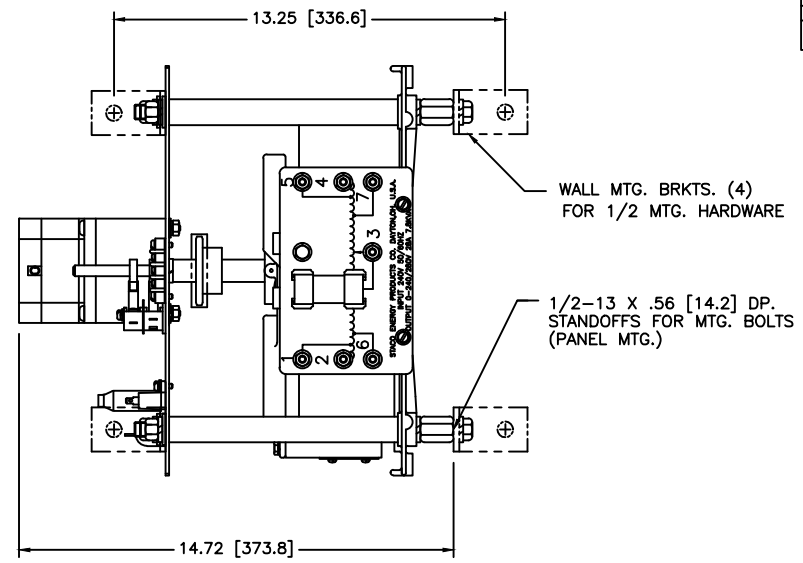
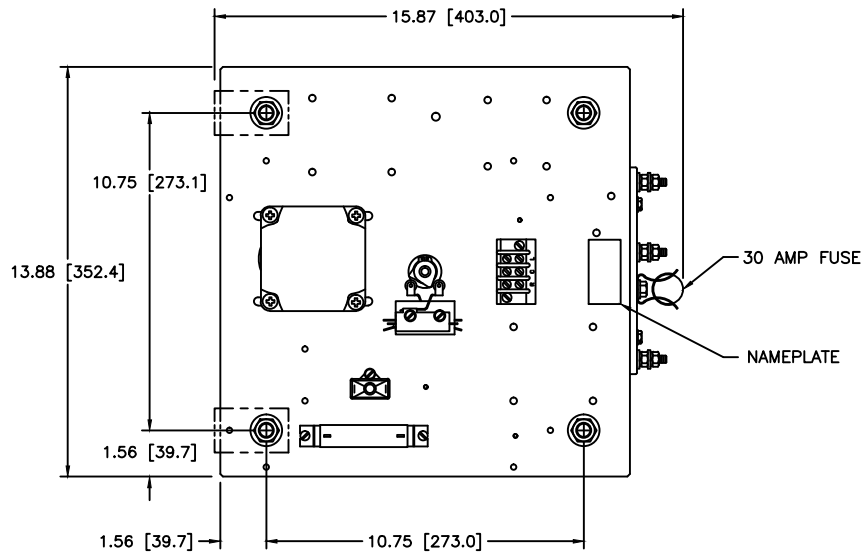
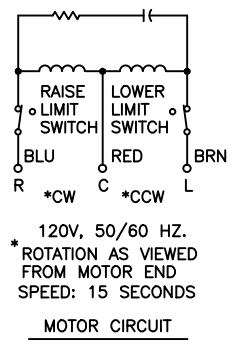


| | | | |
|-----------|----------|----|------|
| REV. | DATE | BY | APP. |
| B | | | |
| 031-7585 | | | |
| REVISED | | | |
| REV. | DATE | BY | APP. |
| A | 24/06/02 | | |
| NEW MOTOR | | | |



SCHMATIC VIEW FROM ROTOR END



MOTOR CIRCUIT

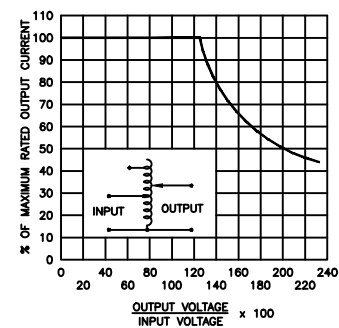


FIGURE A
MAXIMUM OUTPUT CURRENT OF ANY DUAL INPUT VOLTAGE OR VOLTAGE DOUBLER UNIT OPERATED AT LOWER INPUT VOLTAGE.

* MAXIMUM OUTPUT CURRENT IN OUTPUT VOLTAGE RANGE FROM 0 TO 25% ABOVE LINE VOLTAGE. AT HIGHER OUTPUT VOLTAGES, OUTPUT CURRENT MUST BE REDUCED ACCORDING TO RATING CURVE FIGURE A.

‡ MAXIMUM KVA AT MAXIMUM OUTPUT AND CORRESPONDING DE-RATED CURRENT. MAXIMUM KVA AT LOWER OUTPUT VOLTAGES MAY BE CALCULATED FROM RATING CURVE FIGURE A.

| SPECIFICATIONS | | | | | | | | |
|----------------|-------|-------|--------|-------------|----------|-------------------------------------|--|--------|
| WIRING | INPUT | | OUTPUT | | | SHAFT ROTATION FOR INCREASE VOLTAGE | TERMINAL CONNECTIONS FOR INCREASING VOLTAGE AS VIEWED FROM ROTOR END | |
| | VOLTS | HERTZ | VOLTS | MAX. AMPS | MAX. KVA | | INPUT | OUTPUT |
| SINGLE PHASE | 240 | 50/60 | 0-240 | 28 | 6.7 | CW | 2-4 | 2-3 |
| | | | 0-280 | 28 | 7.8 | CCW | 4-2 | 4-3 |
| | 120 | 50/60 | 0-280 | 28-12 V.D.* | 3.4‡ | CW | 2-5 | 2-3 |
| | | | 0-280 | 28-12 V.D.* | 3.4‡ | CCW | 4-1 | 4-3 |

MAKES VARIABLE OUTPUT VOLTAGE IN A SINGLE PHASE UNIT. ALL INPUTS ARE 50/60 HZ. ALL OUTPUTS ARE 50/60 HZ. ALL OUTPUTS ARE 240V.

DESIGN BY: F. SEALE DATE: 12/9/96

SPEC. CONTROL DWG. VARIABLE TRANSFORMER TYPE: 15M5021

STAGS ENERGY PRODUCTS CO. A Corporation of American Controls 300 South Boulevard, Dayton, Ohio 45424-1001

UNIT WEIGHT: 7 7/8 LBS. UNIT CODE: 83008

SCALE: .5=1 SHEET 1 OF 1

REV. NO. D 031-7585