

Technical specification:

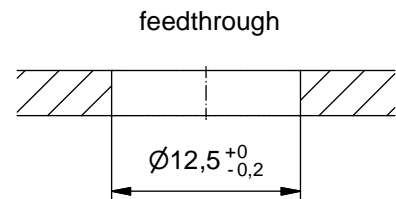
Rated voltage: IEC 61076-2-101	250 V
Current rating: IEC 61076-2-101	4 A at 40°C
Insulation resistance: IEC 60512	>=100 MΩ
Pollution degree: IEC 60664-1	3/2
Degree of protection: IEC 60529	IP 67, in mated condition
Temperature range: IEC 60664-1	-30°C ... +85°C
Mating cycles: IEC 60512-9a	>=100

Materials:

Contact:	CuZn
Contact plating:	Nickel, gold plated
Contact carrier:	PA 6.6, UL 94
Sealing:	FPM
Socket housing:	CuZn, nickel plated
Shroud:	CuSn6
-plating:	Tin plated

Installation specification:

recommended torque:	0,8-1 Nm
Conec installation tool:	Torque wrench: 36-000200 Insert across flats 15: 36-000320



Part no:	Description:	Pos	Note:
43-01229	SAL - 12D - FKHW4	4	with shroud

DO NOT ALTER CAD DRAWING BY HAND Directive 2002/95/EC RoHS compliant	Index: b 24.03.11 fro Ä3914 Data sheet revised, technical specification changed	dim. in mm	title Female socket M12x1 angled, backmounting, Industrial Ethernet, dip solder						
		<table border="1" style="font-size: 8px;"> <tr> <th>date</th> <th>name</th> </tr> <tr> <td>17.10.07</td> <td>Fromm</td> </tr> <tr> <td>29.02.08</td> <td>W.Schmidt</td> </tr> </table>		date	name	17.10.07	Fromm	29.02.08	W.Schmidt
	date	name							
	17.10.07	Fromm							
29.02.08	W.Schmidt								
general tolerance: 0 ± 0,50mm 0,0 ± 0,25mm 0,00 ± 0,10mm		part no:							
THIS DRAWING MAY NOT BE COPIED OR REPRODUCED IN ANY WAY, AND MAY NOT BE PASSED ON TO A THIRD PARTY WITHOUT WRITTEN PERMISSION. OWNERSHIP AND COPYRIGHT OF CONEC GmbH									