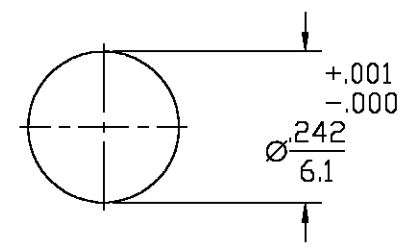


REVISIONS			
REV	DESCRIPTION	DATE	APPROVED
01	RELEASED	KYLE 10-6-97	<i>PCW</i> 10/7/97
B	REVISED PER ECN 0U20-0262-01	GV 1/6/03	JGH



RECOMMENDED MOUNTING HOLE

ELECTRICAL	MECHANICAL	ENVIRONMENTAL	COMPONENT	MATERIAL	FINISH
Nominal Impedance (Ohms) 50	Interface Dimensions (DSP End Only)	TEMPERATURE RATING -65° TO +125°C	HOUSING MOUNTING NUT LOCKWASHER	STAINLESS STEEL PER ASTM-A484 AND ASTM-A582, TYPE 303	PASSIVATE PER QQ-P-35
Frequency Range (GHz) DC to 22	MIL-STD-348, Fig 321-1	Vibration MIL-STD-202, Method 204, Condition D	DIELECTRIC	PTFE FLUOROCARBON PER ASTM-D-1457	N/A
Volt Rating (VRMS MAX) @ Sea Level 335	Force to Engage 3.5mm (In-Lbs MAX) 2	Shock MIL-STD-202, Method 213, Condition I	CENTER CONTACT	BERYLLIUM COPPER PER ASTM-B-196 OR ASTM-B-197, ALLOY C17300, CONDITION H	GOLD PLATE PER MIL-G-45204
VSWR TBD	DSP (Lbs MAX) 3	Thermal Shock MIL-STD-202, Method 107, Condition B	O-RING	FLUOROSILICONE PER MIL-R-25988, CLASS I, TYPE I.	N/A
Insertion Loss (dB MAX) TBD	Force to Disengage 3.5mm (In-Lbs MAX) 2	Moisture Resistance MIL-STD-202, Method 106			
RF Leakage (dB MIN) (Interface Only, Fully Mated) -(90-f(GHz))	DSP (Lbs MAX) 1.5	Corrosion - MIL-STD-202, Method 101, Condition B			
Corona, 70,000 Ft (VRMS MIN) 250	Center Contact Captivation Axial (Lbs) 6				
Dielectric Withstanding Voltage (VRMS MIN) @ Sea Level 1000	Mating Characteristics (3.5mm Only) Insertion (Lbs MAX) 3		UNLESS OTHERWISE SPECIFIED DIMENSIONS ARE IN INCHES	DRAWN BY <i>J. Amelio</i> DATE 7/22/97	AMP Incorporated 140 Fourth Avenue Waltham, MA 02451-7599
Contact Resistance (Milliohms MAX) Center Contact 4.0	Withdrawal (Oz MIN) 1		FRAC. DEC. ANGLES ± 1/64 ± .005 ± 1°	CHECKED BY	
Outer Contact 2.0			These drawings and specifications are the property of M/A COM Interconnect Div. and shall not be reproduced or copied or used in whole or in part as the basis for the manufacture or sale of item(s) without written permission.	APP'D BY	AMP TITLE DSP BULKHEAD FEEDTHRU PLUG TO 3.5MM JACK ADAPTER SIZE B CODE IDENT NO. 26805 4585-2352-02 REV 01 SCALE 4:1 SHEET 1 OF 1
RF High Potential @ Sea Level (VRMS MIN @ 5 MHz) 670				USE ASS'Y PROCEDURE NO. AP. N/A	
I.R.(Megohms MIN) 5000					

.XXX = in
XX.X = mm (REF)

CUSTOMER DRAWING

AMP PART # 1251381-1
SHEET 1 OF 1 REV B