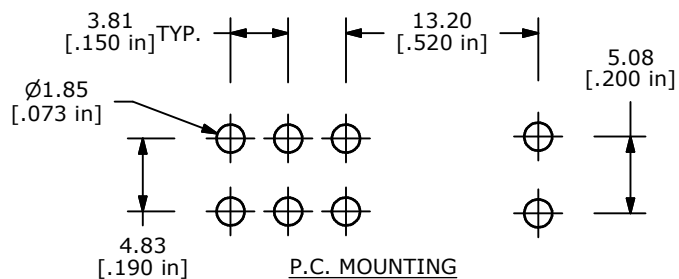
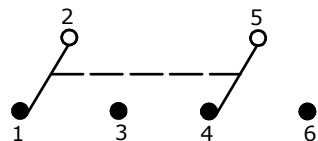


PANEL MOUNTING



P.C. MOUNTING

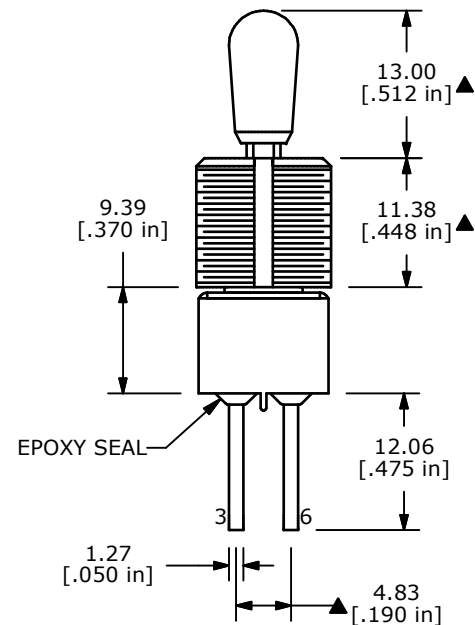
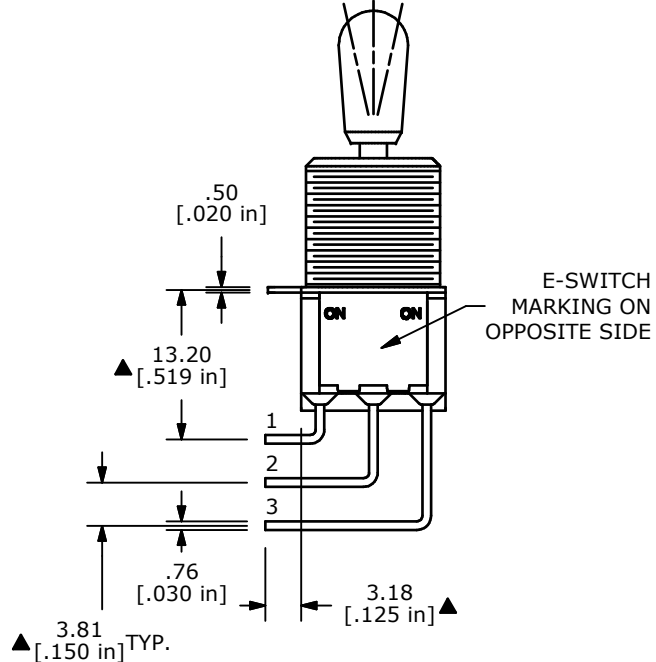
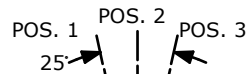
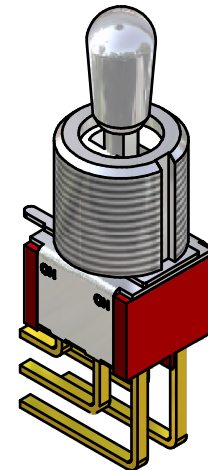
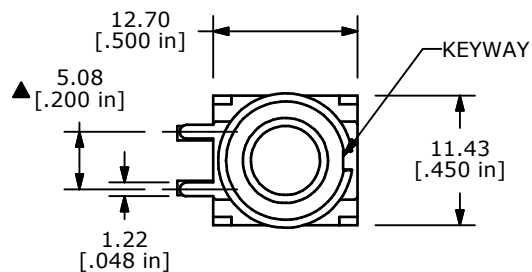
| SWITCH FUNCTION |        |          |
|-----------------|--------|----------|
| POS. 1          | POS. 2 | POS. 3   |
|                 |        |          |
| ON              | NONE   | ON       |
| 2-3, 5-6        | OPEN   | 2-1, 5-4 |



CIRCUIT: DPDT

NOTE:

- ALL DIMENSIONS IN MM [INCH]
- GENERAL TOLERANCE: X.X=±0.4  
X.XX=±0.25
- TERMINAL NUMBERS FOR REF ONLY
- CONTACT MATERIAL: GOLD
- ▲ 5. RATING: 0.4VA MAX. @ 20 VAC OR VDC MAX.
- ELECTRIC LIFE: 40,000 MAKE-AND-BREAK CYCLES AT FULL LOAD.
- INSULATION RESISTANCE: 1,000 MEGA-OHM MIN.
- DIELECTRIC STRENGTH: 1,000 V RMS @SEA LEVEL.
- OPERATING TEMP.: -30°C to 85°C
- ▲ DENOTES CRITICAL PARAMETER.
- 2002/95/EC (ROHS) COMPLIANT
- HARDWARE TO BE SHIPPED BULK  
T100004 - HEXNUT - QTY 2  
T100012 - LOCKWASHER - QTY 1  
T100003 - LOCKRING - QTY 1



E-SWITCH MARKING ON OPPOSITE SIDE



TITLE 100DP1T7B13M7REH

|     |        |                       |          |    |
|-----|--------|-----------------------|----------|----|
| B   | 17797  | CHANGED P.C. MOUNTING | 10/22/07 | BF |
| REV | PCR NO | DESCRIPTION           | DATE     | BY |

|       |            |    |          |     |
|-------|------------|----|----------|-----|
| SCALE | DATE       | DR | DWG      | REV |
| 2:1   | 10/22/2007 | BF | ST121095 | B   |

THE INFORMATION CONTAINED IN THIS DOCUMENT IS PROPRIETARY TO E-SWITCH AND IS NOT TO BE COPIED OR TRANSFERRED