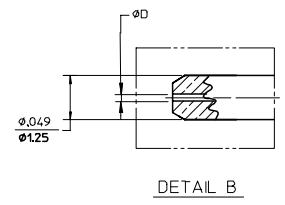
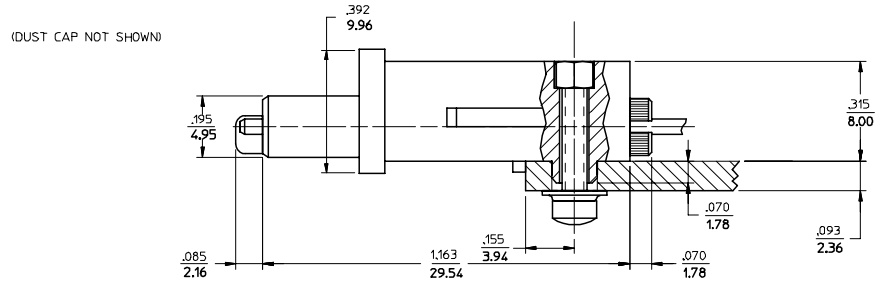
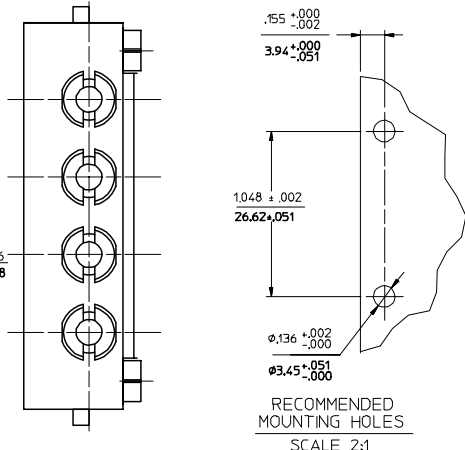
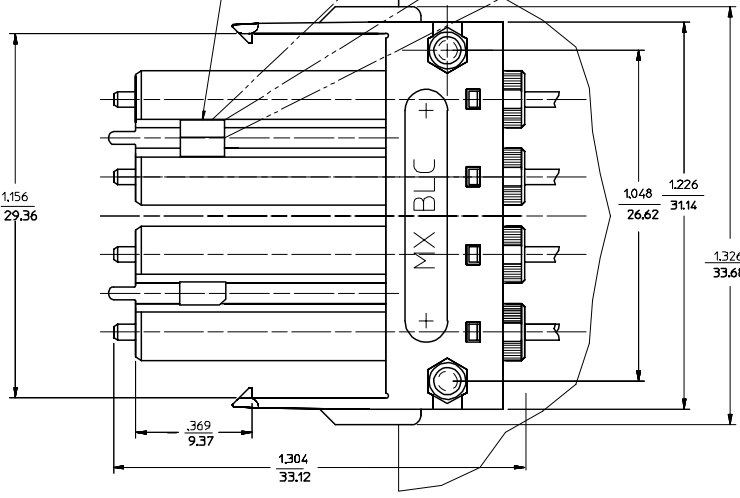
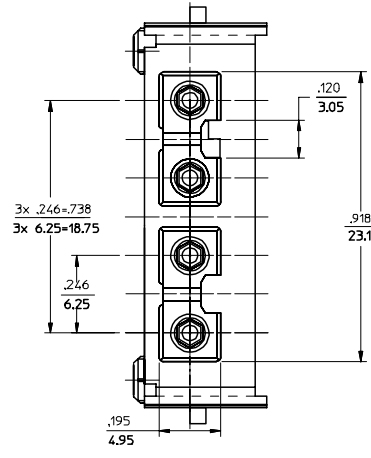
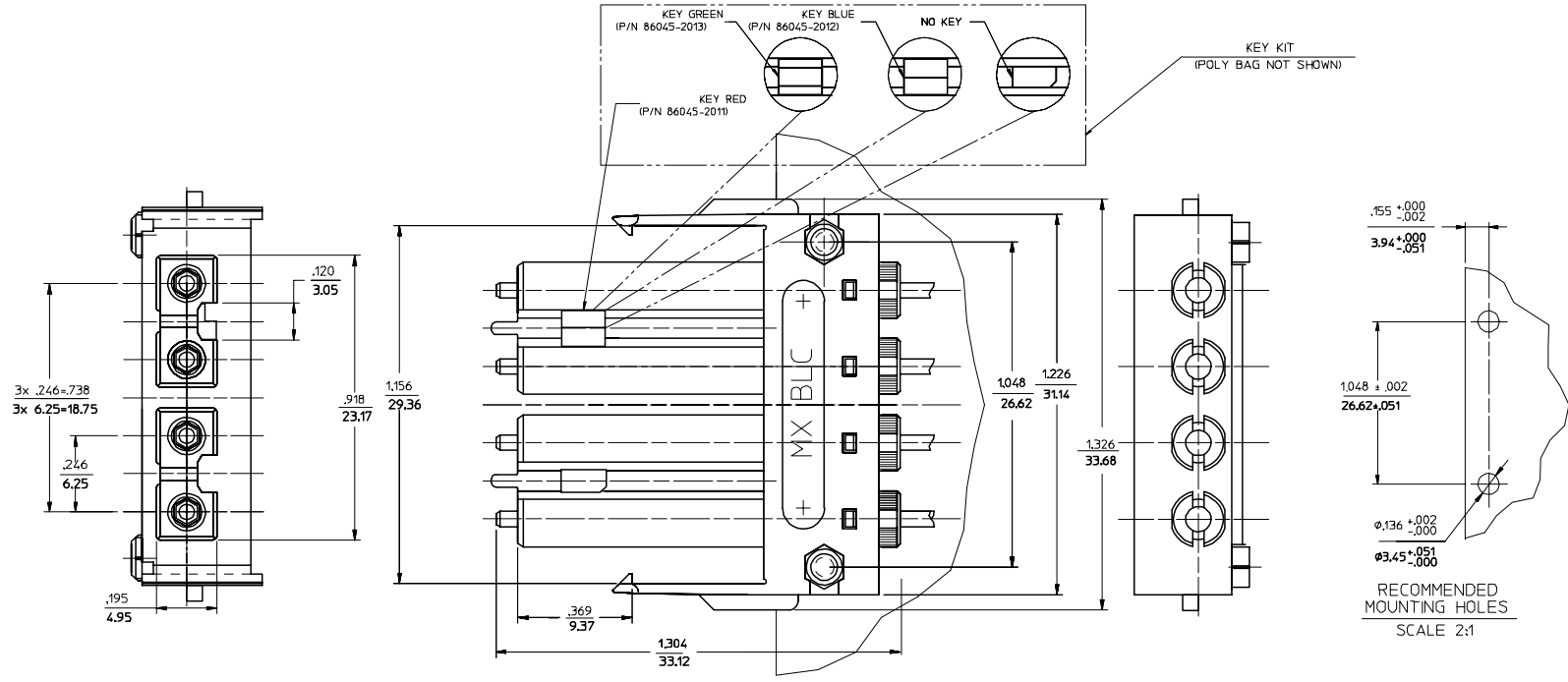


13 12 11 10 9 8 7 6 5 4 3 2 1

| CONNECTOR P/N | ØD (H) |
|---------------|--------|
| 106044-2200   | 125.50 |
| 106044-3000   | 127.00 |
| 106044-4200   | 125.00 |
| 106044-5000   | 126.00 |
| 106044-6200   | 125.25 |



NOTES:  
1. KEYS ARE TO BE PACKAGED UNASSEMBLED WITH CONNECTOR IN POLY BAG.

|  |                               |  |                      |                          |                     |                           |                      |                                     |  |                                |                      |
|--|-------------------------------|--|----------------------|--------------------------|---------------------|---------------------------|----------------------|-------------------------------------|--|--------------------------------|----------------------|
| ENTER DESCRIPTION<br>EC NO: MF2007-0349<br>DRAWN/REV/ENR 2006/11/28<br>CHKD: 2006/11/28<br>APPR: JGUMIN 2006/12/04<br>REV A1 | QUALITY SYMBOLS<br>▽=0<br>▽=0 | GENERAL TOLERANCES (UNLESS SPECIFIED)                |                      | DIMENSION STYLE<br>IN/MM |                     | SCALE<br>3.5:1            | DESIGN UNITS<br>INCH | THIRD ANGLE PROJECTION              |  |                                |                      |
|  |                               | 4 PLACES ± --- ± ---                                 | 3 PLACES ± --- ± --- | 2 PLACES ± --- ± ---     | 1 PLACE ± --- ± --- | DRAWN BY<br>KP            | DATE<br>2006/05/12   | TITLE<br>BLC CONNECTOR (4 POSITION) |  |                                |                      |
|  |                               | ANGULAR ±1/2°  |                      |                          |                     | CHECKED BY                | DATE                 | APPROVED BY<br>ILG                  |  |                                |                      |
|  |                               | DRAFT WHERE APPLICABLE MUST REMAIN WITHIN DIMENSIONS |                      |                          |                     | MATERIAL NO.<br>SEE TABLE | DATE<br>2006/05/12   | MOLEX INCORPORATED                  |  | DOCUMENT NO.<br>SD-106044-XXX0 | SHEET NO.<br>1 OF 01 |

12 11 10 9 8 7 6 5 4 3 2 1