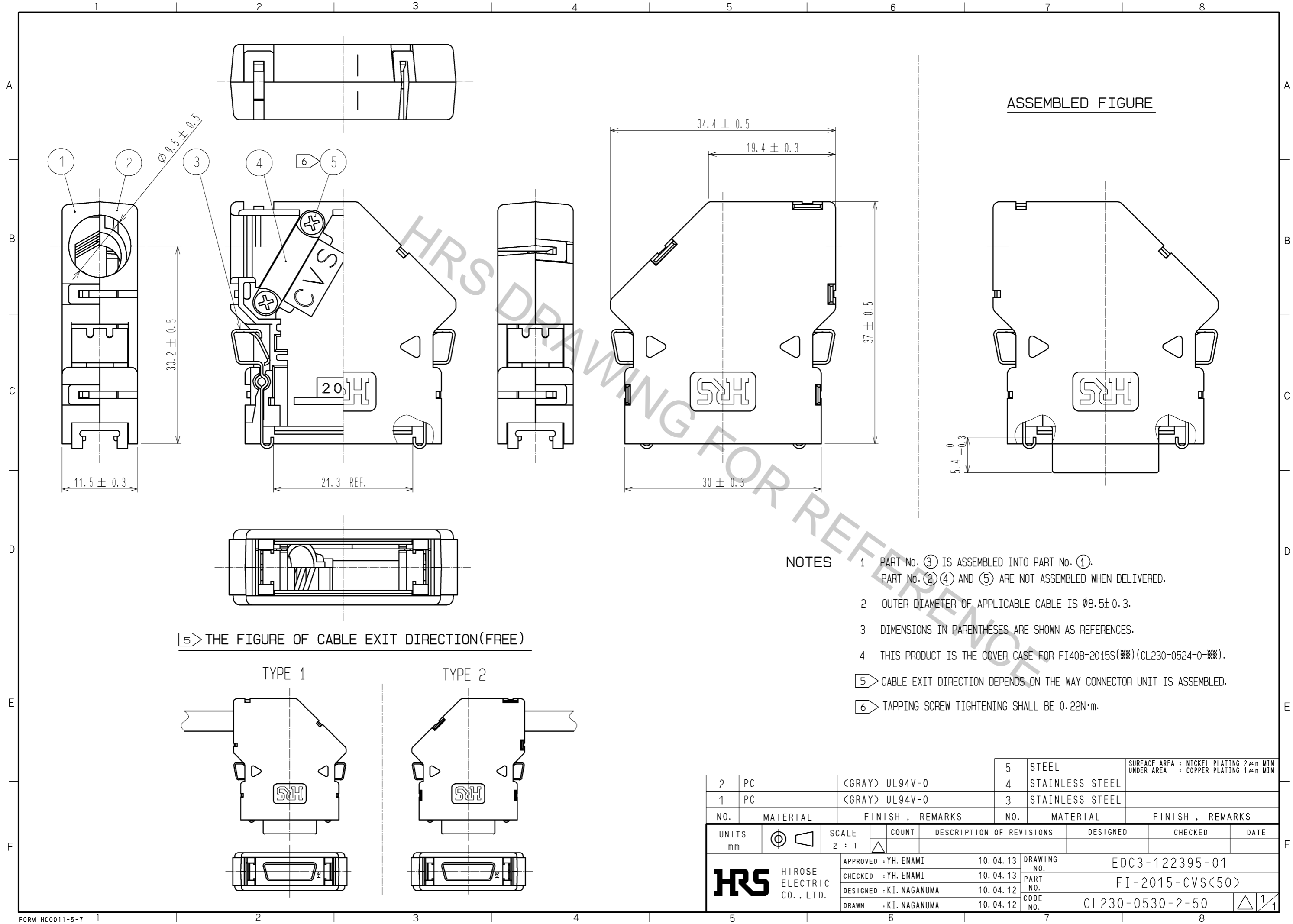


Apr.1.2017 Copyright 2017 HIROSE ELECTRIC CO., LTD. All Rights Reserved.



5 THE FIGURE OF CABLE EXIT DIRECTION(FREE)

- NOTES**
- 1 PART No. ③ IS ASSEMBLED INTO PART No. ①.  
PART No. ② ④ AND ⑤ ARE NOT ASSEMBLED WHEN DELIVERED.
  - 2 OUTER DIAMETER OF APPLICABLE CABLE IS  $\varnothing 8.5 \pm 0.3$ .
  - 3 DIMENSIONS IN PARENTHESES ARE SHOWN AS REFERENCES.
  - 4 THIS PRODUCT IS THE COVER CASE FOR FI40B-2015S(※)(CL230-0524-0-※).
  - 5 CABLE EXIT DIRECTION DEPENDS ON THE WAY CONNECTOR UNIT IS ASSEMBLED.
  - 6 TAPPING SCREW TIGHTENING SHALL BE 0.22N·m.

2	PC	(GRAY) UL94V-0	5	STEEL	SURFACE AREA : NICKEL PLATING 2μm MIN UNDER AREA : COPPER PLATING 1μm MIN
1	PC	(GRAY) UL94V-0	4	STAINLESS STEEL	
			3	STAINLESS STEEL	
NO.	MATERIAL	FINISH . REMARKS	NO.	MATERIAL	FINISH . REMARKS
UNITS		SCALE	COUNT	DESCRIPTION OF REVISIONS	
mm		2 : 1		DESIGNED	CHECKED
		APPROVED : YH. ENAMI	10. 04. 13	DRAWING NO. EDC3-122395-01	
HIROSE ELECTRIC CO., LTD.		CHECKED : YH. ENAMI	10. 04. 13	PART NO. FI-2015-CVS(50)	
		DESIGNED : KI. NAGANUMA	10. 04. 12	CODE NO. CL230-0530-2-50	
		DRAWN : KI. NAGANUMA	10. 04. 12		