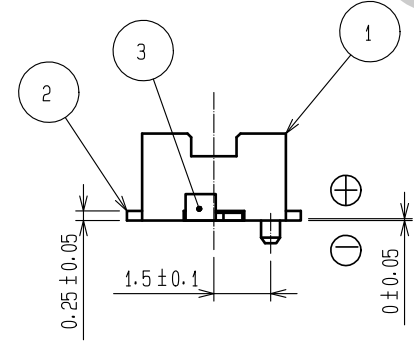
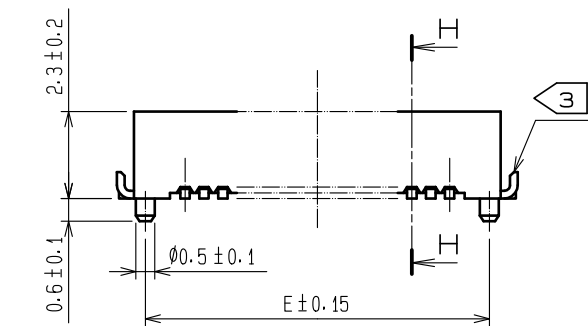
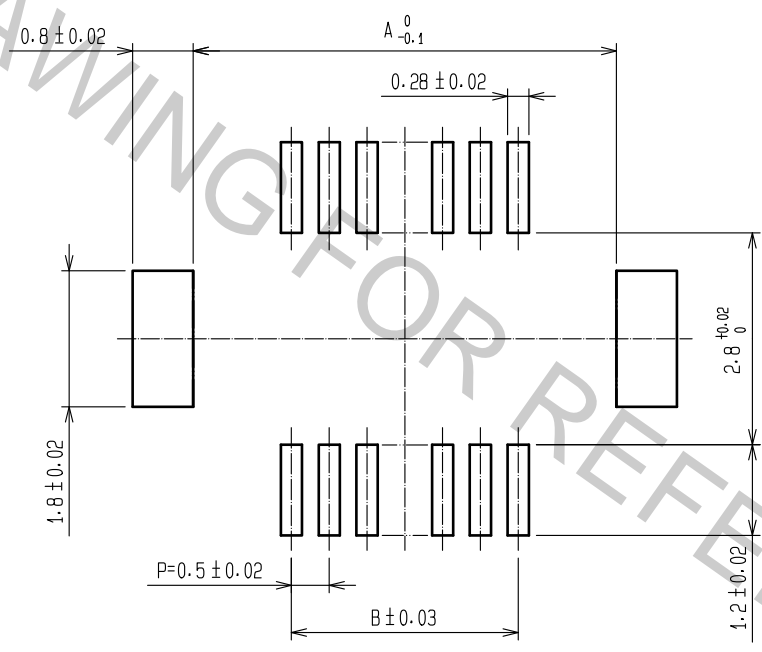


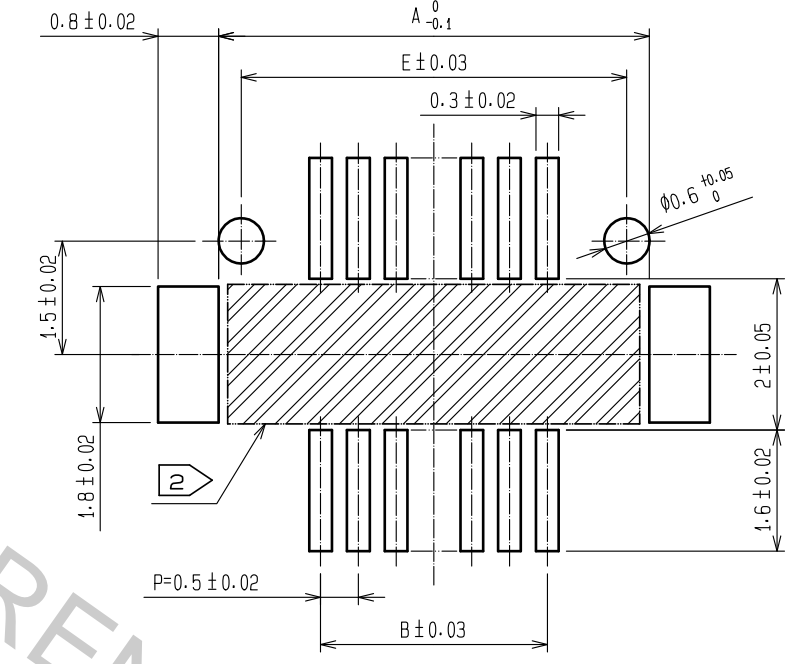
| CODE No. | CONTACT | A | B | C | D | E | F | G |
|-----------------|---------|------|------|------|------|------|------|------|
| CL537-0721-0-86 | 10 | 4.7 | 2.0 | 2.8 | 3.2 | 4.1 | 2.8 | 5.6 |
| CL537-0918-4-86 | 14 | 5.7 | 3.0 | 3.8 | 4.2 | 5.1 | 3.8 | 6.6 |
| CL537-0723-5-86 | 20 | 7.2 | 4.5 | 5.3 | 5.7 | 6.6 | 5.3 | 8.1 |
| CL537-0725-0-86 | 30 | 9.7 | 7.0 | 7.8 | 8.2 | 9.1 | 7.8 | 10.6 |
| CL537-0732-6-86 | 32 | 10.2 | 7.5 | 8.3 | 8.7 | 9.6 | 8.3 | 11.1 |
| CL537-0726-3-86 | 36 | 11.2 | 8.5 | 9.3 | 9.7 | 10.6 | 9.3 | 12.1 |
| CL537-0727-6-86 | 40 | 12.2 | 9.5 | 10.3 | 10.7 | 11.6 | 10.3 | 13.1 |
| CL537-0729-1-86 | 50 | 14.7 | 12.0 | 12.8 | 13.2 | 14.1 | 12.8 | 15.6 |
| CL537-0731-3-86 | 60 | 17.2 | 14.5 | 15.3 | 15.7 | 16.6 | 15.3 | 18.1 |
| CL537-0733-9-86 | 80 | 22.2 | 19.5 | 20.3 | 20.7 | 21.6 | 20.3 | 23.1 |



RECOMMEND METAL MASK PATTERN (10:1)

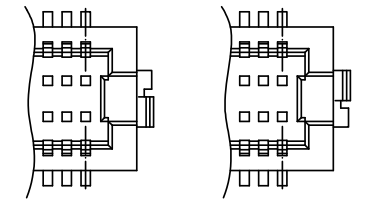


RECOMMENDED LAND PATTERN (10:1)



RECOMMENDED THICKNESS OF SOLDER PASTE : 120 μm

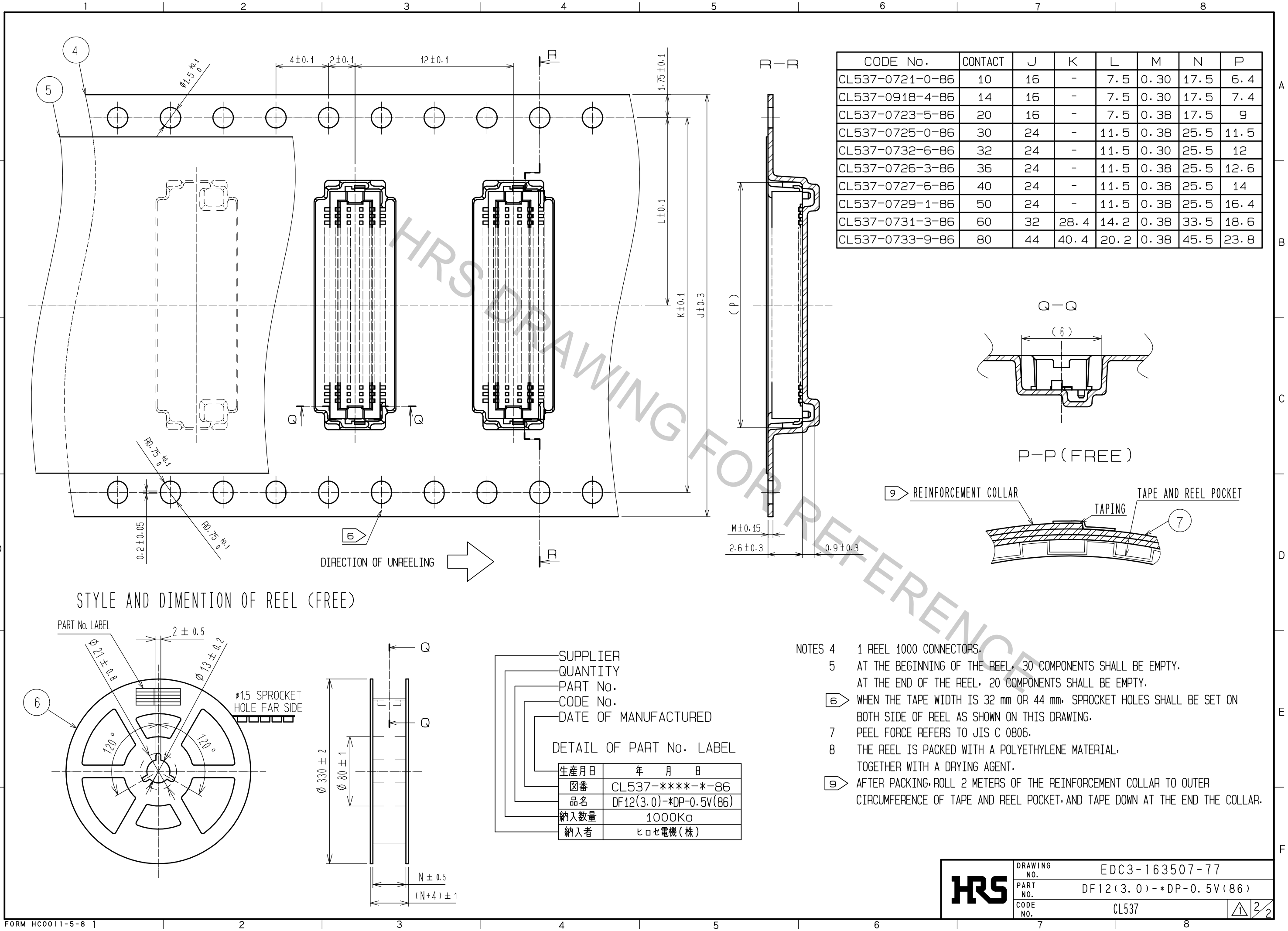
- NOTES 1 LEAD CO-PLANARITY SHALL BE 0.08 mm MAX.
 2 IF THERE IS PATTERN ON PART, THERE IS A POSSIBILITY THAT IT WILL MAKE CONTACT WITH THE LEADS.
 3 REINFORCED METAL FITTINGS AS FOLLOWS.



| NO. | MATERIAL | FINISH | REMARKS | NO. | MATERIAL | FINISH | REMARKS |
|-----|-----------------|--------|--|-----|-----------|--------|--|
| 2 | PHOSPHOR BRONZE | | CONTACT AREA:GOLD PLATED 0.2μm min LEAD AREA:GOLD PLATED 0.015μm min OTHERS(UNDER PLATING):NICKEL PLATED 2μm min | 7 | PS | | CLEAR (REINFORCEMENT COLLAR) |
| 1 | POLYAMIDE | | UL94V-0, NATURAL (BEIGE) | 6 | PS | | BLACK (PLASTIC REEL) |
| | | | | 5 | POLYESTER | | CLEAR (COVER TAPE) |
| | | | | 4 | PS | | CLEAR (EMBOSSED CARRIER TAPE) |
| | | | | 3 | BRASS | | TIN PLATED 2μm min (UNDER PLATING):NICKEL 1μm min |

| UNITS | SCALE | COUNT | DESCRIPTION OF REVISIONS | DESIGNED | CHECKED | DATE |
|-------|-------|-------|--------------------------|------------|--------------|----------|
| mm | 5 : 1 | 1 | DIS-H-00001707 | SH. HOSODA | TS. MIYAZAKI | 16.06.10 |

| APPROVED | CHECKED | DESIGNED | DRAWN | DRAWING NO. | PART NO. | CODE NO. |
|-----------|--------------|-------------|-----------|----------------|------------------------|----------|
| KH. IKEDA | TS. MIYAZAKI | YH. MICHIDA | KR. AJITO | EDC3-163507-77 | DF12(3.0)-*DP-0.5V(86) | CL537 |



- NOTES
- 4 1 REEL 1000 CONNECTORS.
 - 5 AT THE BEGINNING OF THE REEL, 30 COMPONENTS SHALL BE EMPTY. AT THE END OF THE REEL, 20 COMPONENTS SHALL BE EMPTY.
 - 6 WHEN THE TAPE WIDTH IS 32 mm OR 44 mm, SPROCKET HOLES SHALL BE SET ON BOTH SIDE OF REEL AS SHOWN ON THIS DRAWING.
 - 7 PEEL FORCE REFERS TO JIS C 0806.
 - 8 THE REEL IS PACKED WITH A POLYETHYLENE MATERIAL, TOGETHER WITH A DRYING AGENT.
 - 9 AFTER PACKING, ROLL 2 METERS OF THE REINFORCEMENT COLLAR TO OUTER CIRCUMFERENCE OF TAPE AND REEL POCKET, AND TAPE DOWN AT THE END THE COLLAR.

| | | |
|------------|-------------|------------------------|
| HRS | DRAWING NO. | EDC3-163507-77 |
| | PART NO. | DF12(3.0)-*DP-0.5V(86) |
| | CODE NO. | CL537 |