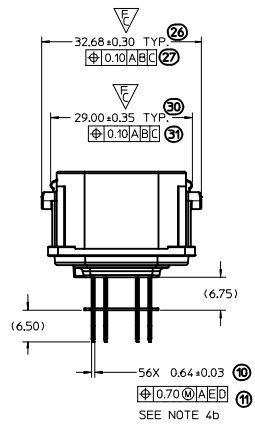
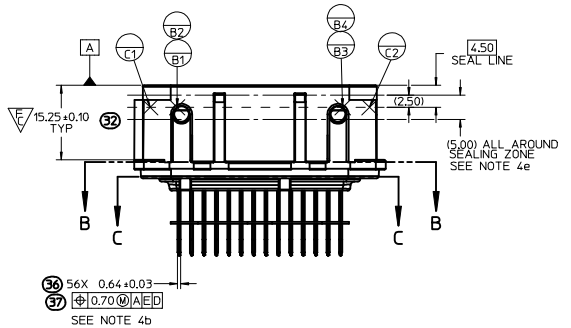
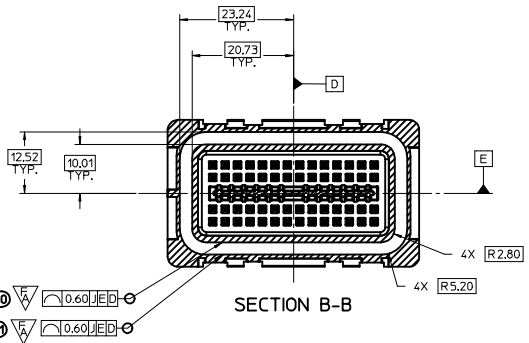
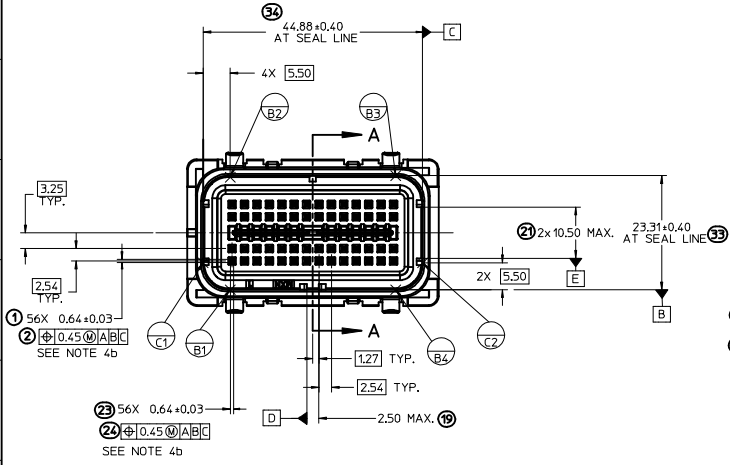


NOTES: VALID UNLESS OTHERWISE SPECIFIED

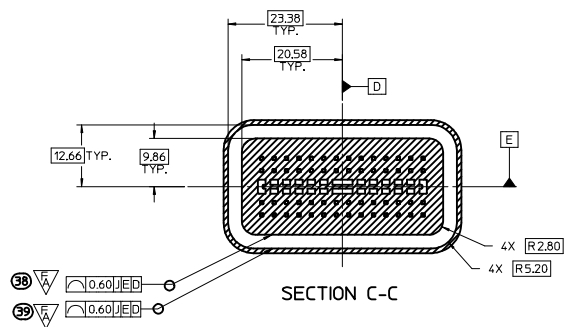
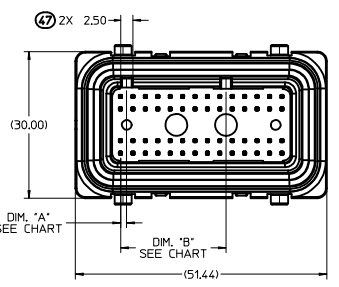
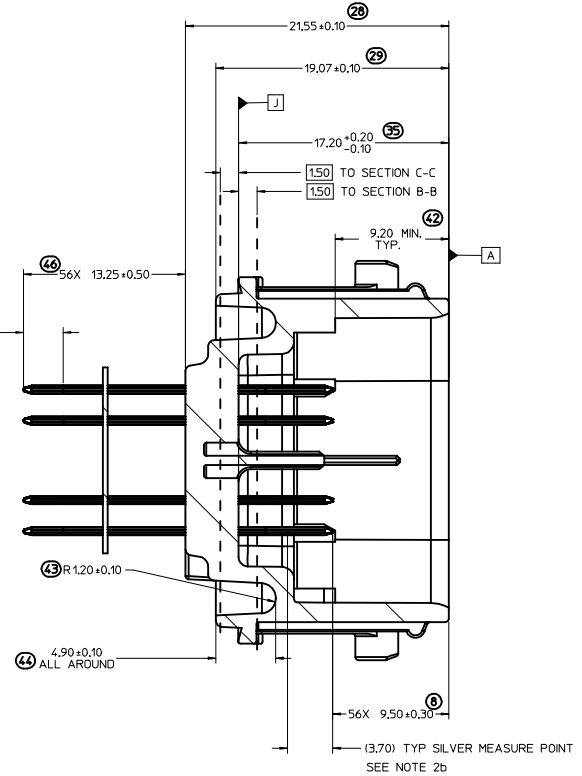
1. GENERAL:
  - a. APPLICATION SPECIFICATION SEE: AS-31386-200
  - b. PRODUCT SPECIFICATION SEE: PS-31386-200
  - c. PACKAGING SPECIFICATION: PK-31301-916
  - d. PARTS MUST BE IN COMPLIANCE TO MOLEX CHEMICAL SUBSTANCES FOR PRODUCTS AND PACKAGING SPECIFICATION: ES-40000-5016
  - e. DATA MUST BE SUBMITTED UNDER THE MOLEX PART NUMBER TO IMDS (COMPANY ID#13255)
  - f. DIMENSIONS AND TOLERANCES ARE VALID FOR THE AS SHIPPED SHROUD ASSEMBLY
  - g. REFERENCE GM INTERFACE CONTROL DRAWINGS (ICD):
    1. 12582683
    2. 12642694
2. DESIGN - MATERIALS:
  - a. PLASTIC: 30% GF PBT, SEE CHART FOR COLOR
  - b. SIGNAL PIN PLATING:
    - UNDERPLATING (OVERALL): NICKEL 1.27-2.54  $\mu$ m
    - GOLD (MATE SIDE): 0.76  $\mu$ m MIN
    - SILVER (MATE SIDE): 1.90-3.30  $\mu$ m
    - TIN (SOLDER TAIL): 5.08-10.16  $\mu$ m BRIGHT FINISH
3. DESIGN - GEOMETRY:
  - a. THIS IS A 100% CAD GENERATED PART. THE CAD MATHEMATICAL DATA IS THE MASTER FOR ALL NON-DIMENSIONAL FEATURES. DRAWING DIMENSIONS SHALL BE MET WHEN DIFFERENCES EXIST BETWEEN THE DRAWING AND THE CAD MODEL. UNDERLINED DIMENSIONS OR DIMENSIONS INDICATED AS 'EDITED' MAY BE DIFFERENT FROM THE 3D MODEL GEOMETRY. FOR DIMENSIONAL OR ANY INFORMATION NOT SHOWN ON THIS DRAWING, ANALYZE THE CAD MODEL.
  - b. PRODUCT DESIGN MODEL NUMBER(S): SEE BOM TABLE
  - c. GEOMETRIC DIMENSIONS AND TOLERANCES PER ASME Y14.5M-1994
  - d. GENERAL TOLERANCES: - SEE TABLE
4. DESIGN - MANUFACTURING:
  - a. HUMAN READABLE LASER MARKING
    1. INFORMATION TO BE PRINTED:
      - DDY - 4 DIGIT JULIAN DATE CODE
      - S\_HH - STITCHER NUMBER, HOUR NUMBER (24 HOUR CLOCK)
      - MMMM - LAST FOUR DIGITS OF MOLEX MATERIAL NUMBER
    2. SIZE: HUMAN LEGIBLE
  - b. PIN MATE SIDE AND PCB SIDE TRUE POSITION TO BE VERIFIED ONLINE WITH A GO/NO GO FUNCTIONAL GAGE.
  - c. ANTI-TARNISH FOR Ag PLATING ONLY: SYNTHETIC HYDROCARBON CONTACT SURFACE FINISH OR EQUIVALENT APPLIED WITHOUT VOID TO CONTACT AREA (MIN. 3.7mm FROM PIN TIP).
  - d. VISUAL DEFECTS SHALL MEET COSMETIC STANDARD PS-45499-002 (CLASS B)
  - e. THERE SHALL BE NO PERMISSIBLE DEFECTS THAT COULD POTENTIALLY PROHIBIT THE FUNCTIONALITY WITHIN THE SEALING SURFACE/ZONE SUCH AS PARTING LINES, MISMATCHES, SINK, TEXTURE VARIATIONS, SCRATCHES/GOUGES, SHORT FILL, PROTRUSIONS, PITS, DENTS/NICKS, BLISTERS OR EJECTOR MARKS.

B11	UPDATED NOTE 1c SAP# 10607192
B9	Ag PARTS TO SALEABLE SAP# 10594581
B8	ADDED NOTE 4d, e & SEALING ZONE ON PG 2 SAP# 10586362
B7	EDITED DIM & NOTES REMOVED NOTES 3e-3i & 4a-4i FROM PREVIOUS REV SAP# 10580347
B6	EDITED STATUS OF Ag PARTS SAP# 10579378
B5	EDITED DIMS. ADDED NOTES ON SHEET 1, DATUM D & E. UPDATED VIEWS AND FUNCTIONALS SAP# 10576862

INSPECTION BALLOON # LOG																					
PER DRAWING REVISION: B8																					
LAST BALLOON NUMBER USED: 47																					
ADDED BALLOON NUMBERS: 1, 2, 8, 17, 18, 19, 21, 23, 24, 26-44, 46, 47																					
REMOVED BALLOON NUMBERS: 3-7, 9-16, 20, 22, 25																					
SEE REV COLUMN SEC NO: UAU2013-2068 DRAWN/DOWN: 2013/08/06 CHKD: APPR:DKRMZYK 2013/08/16 REV:	QUALITY SYMBOLS ∇=0 ∇=0 ∇=0	GENERAL TOLERANCES (UNLESS SPECIFIED) <table border="1"> <tr> <td></td> <td>mm</td> <td>INCH</td> </tr> <tr> <td>4 PLACES</td> <td>±---</td> <td>±---</td> </tr> <tr> <td>3 PLACES</td> <td>±---</td> <td>±---</td> </tr> <tr> <td>2 PLACES</td> <td>±0.13</td> <td>±---</td> </tr> <tr> <td>1 PLACE</td> <td>±0.25</td> <td>±---</td> </tr> <tr> <td>0 PLACE</td> <td>±---</td> <td>±---</td> </tr> </table> ANGULAR ± 3 ° DRAFT WHERE APPLICABLE MUST REMAIN WITHIN DIMENSIONS		mm	INCH	4 PLACES	±---	±---	3 PLACES	±---	±---	2 PLACES	±0.13	±---	1 PLACE	±0.25	±---	0 PLACE	±---	±---	DIMENSION STYLE MM ONLY SCALE 2:1 DESIGN UNITS METRIC DRAWN BY DATE FJAKLIC 04/30/08 CHECKED BY DATE FJAKLIC 04/30/08 APPROVED BY DATE GPRATT 05/05/08 MATERIAL NO. SEE CHART DOCUMENT NO. SD-31386-056 SIZE D THIS DRAWING CONTAINS INFORMATION THAT IS PROPRIETARY TO MOLEX INCORPORATED AND SHOULD NOT BE USED WITHOUT WRITTEN PERMISSION
	mm	INCH																			
4 PLACES	±---	±---																			
3 PLACES	±---	±---																			
2 PLACES	±0.13	±---																			
1 PLACE	±0.25	±---																			
0 PLACE	±---	±---																			
TITLE 56 CKT SHROUD ASSEMBLY 0.64 SQ. PINS MX123 <b>molex</b>			SHEET NO. 1 OF 3																		



SIGNAL PIN (3.25) TYP.  
TIN MEASURE POINT  
SEE NOTE 2b

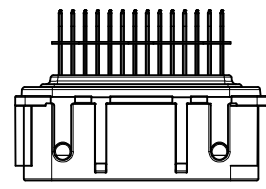
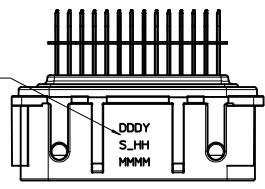


SECTION A-A  
SCALE 5:1

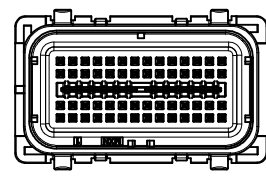
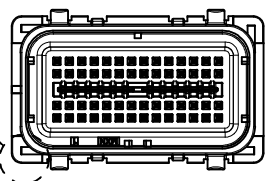
SEE SHEET 1 SEC NO: UAU2013-2068 DRAWNDOWN 2013/08/06 CHKD: APPR:OKRAMCZYK 2013/08/16 B11	QUALITY SYMBOLS ∇=4 ∇=3 ∇=0	GENERAL TOLERANCES (UNLESS SPECIFIED): mm INCH 4 PLACES ± --- ± --- 3 PLACES ± --- ± --- 2 PLACES ± 0.13 ± --- 1 PLACE ± 0.25 ± --- 0 PLACE ± --- ± --- ANGULAR ± 3 ° DRAFT WHERE APPLICABLE MUST REMAIN WITHIN DIMENSIONS	DIMENSION STYLE MM ONLY DRAWN BY DATE FJAKLIC 04/30/08 CHECKED BY DATE FJAKLIC 04/30/08 APPROVED BY DATE GPRATT 05/05/08	SCALE 2:1 DESIGN UNITS METRIC THIRD ANGLE PROJECTION	TITLE 56 CKT SHROUD ASSEMBLY 0.64 SQ. PINS MX123 molex	MATERIAL NO. SEE CHART DOCUMENT NO. SD-31386-056	SHEET NO. 2 OF 3
	THIS DRAWING CONTAINS INFORMATION THAT IS PROPRIETARY TO MOLEX INCORPORATED AND SHOULD NOT BE USED WITHOUT WRITTEN PERMISSION						

SHROUD ASSEMBLY NUMBER	MATE SIDE PIN FINISH	HOUSING COLOR	HARNESS SIDE KEY CODE	PCB SIDE KEY LOCATION		MATING HARNESS PART NUMBER (OPT 0, OPT 9)	STATUS
				DIM. 'A' ± 0.30	DIM. 'B' ± 0.30		
31386-2001	GOLD	BLUE	G	6.35	26.67	345760703 345761903	SALEABLE
31386-2002	GOLD	GRAY	H	1.27	21.59	345760803 345762003	SALEABLE
31386-2020	SILVER	BLUE	G	6.35	26.67	345760703 345761903	SALEABLE
31386-2021	SILVER	GRAY	H	1.27	21.59	345760803 345762003	SALEABLE

SHROUD ASSEMBLY TRACEABILITY INFORMATION FOR MOLEX INTERNAL USE ONLY (SEE NOTE 4d)

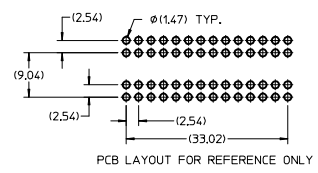


MATE SIDE POLARIZATION KEY AT CORNERS



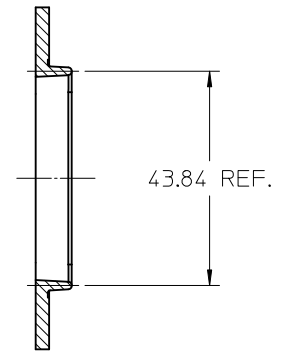
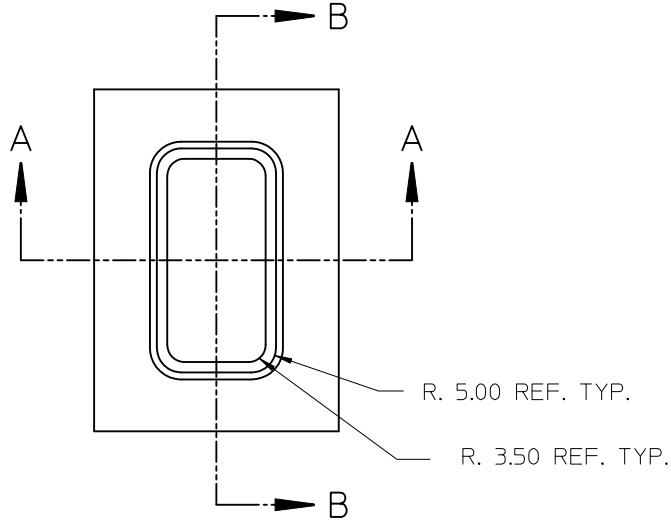
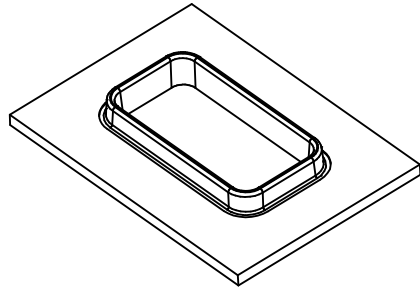
KEY OPTION 'G'

KEY OPTION 'H'

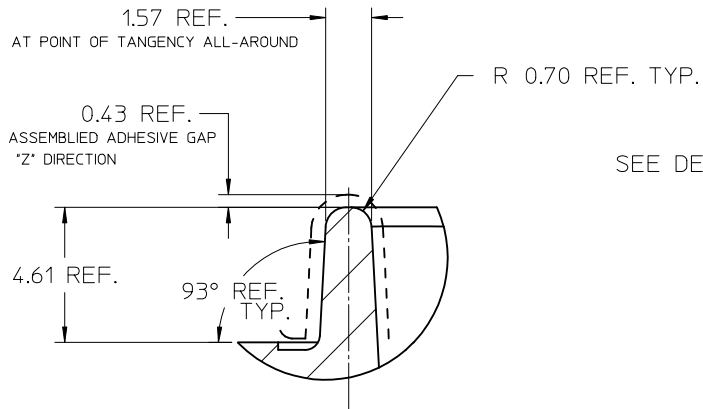


PCB LAYOUT FOR REFERENCE ONLY

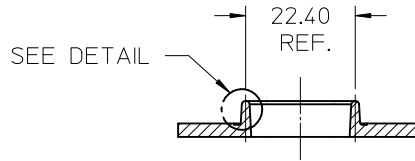
<b>SEE SHEET 1</b> SEC NO: UAU2013-2068 DRAWNDOWN: 2013/08/06 CHYD: APPR:DKR/CKZYK 2013/08/16 <b>B11</b>	QUALITY SYMBOLS $\nabla=0$ $\nabla=0$ $\nabla=0$	GENERAL TOLERANCES (UNLESS SPECIFIED) <table border="1"> <thead> <tr> <th></th> <th>mm</th> <th>INCH</th> </tr> </thead> <tbody> <tr> <td>4 PLACES</td> <td>±0.13</td> <td>±0.005</td> </tr> <tr> <td>3 PLACES</td> <td>±0.25</td> <td>±0.010</td> </tr> <tr> <td>2 PLACES</td> <td>±0.38</td> <td>±0.015</td> </tr> <tr> <td>1 PLACE</td> <td>±0.51</td> <td>±0.020</td> </tr> <tr> <td>0 PLACE</td> <td>±0.64</td> <td>±0.025</td> </tr> </tbody> </table>		mm	INCH	4 PLACES	±0.13	±0.005	3 PLACES	±0.25	±0.010	2 PLACES	±0.38	±0.015	1 PLACE	±0.51	±0.020	0 PLACE	±0.64	±0.025	DIMENSION STYLE <b>MM ONLY</b>	SCALE <b>2:1</b>	DESIGN UNITS <b>METRIC</b>	THIRD ANGLE PROJECTION
		mm	INCH																					
	4 PLACES	±0.13	±0.005																					
3 PLACES	±0.25	±0.010																						
2 PLACES	±0.38	±0.015																						
1 PLACE	±0.51	±0.020																						
0 PLACE	±0.64	±0.025																						
MATERIAL NO. <b>SEE CHART</b>	DRAWN BY FJAKLIC	DATE 04/30/08	TITLE <b>56 CKT SHROUD ASSEMBLY</b> <b>0.64 SQ. PINS</b> <b>MX123</b>	DOCUMENT NO. <b>SD-31386-056</b>	SHEET NO. <b>3 OF 3</b>																			
DRAFT WHERE APPLICABLE MUST REMAIN WITHIN DIMENSIONS																								



SECTION B-B



DETAIL 6:1



SECTION A-A

ENTER DESCRIPTION EC NO: UAU2012-1624 DRAWN BY: DRW:DDJUN 2013/01/30 CHKD: JOUNAJ 2013/02/07 APPR: DKRAWCZYK 2013/02/19 REV B	QUALITY SYMBOLS ▽=0 ▽=0	GENERAL TOLERANCES (UNLESS SPECIFIED) mm INCH 4 PLACES ±--- ±--- 3 PLACES ±--- ±--- 2 PLACES ±--- ±--- 1 PLACE ±--- ±--- ANGULAR ±---°	DIMENSION STYLE MM ONLY DRAWN BY: F JAKLIC DATE: 11/21/2008 CHECKED BY: G PRATT DATE: 11/21/2008 APPROVED BY: DKRAWCZYK DATE: 2013/02/19 MATERIAL NO.	SCALE: 1:1 DESIGN UNITS: METRIC THIRD ANGLE PROJECTION	TITLE: SMALL FOOTPRINT ADHESIVE TONGUE GEOMETRY MOLEX INCORPORATED DOCUMENT NO. SD-31386-156 SHEET NO. 1 OF 1	
	DRAFT WHERE APPLICABLE MUST REMAIN WITHIN DIMENSIONS		THIS DRAWING CONTAINS INFORMATION THAT IS PROPRIETARY TO MOLEX INCORPORATED AND SHOULD NOT BE USED WITHOUT WRITTEN PERMISSION			