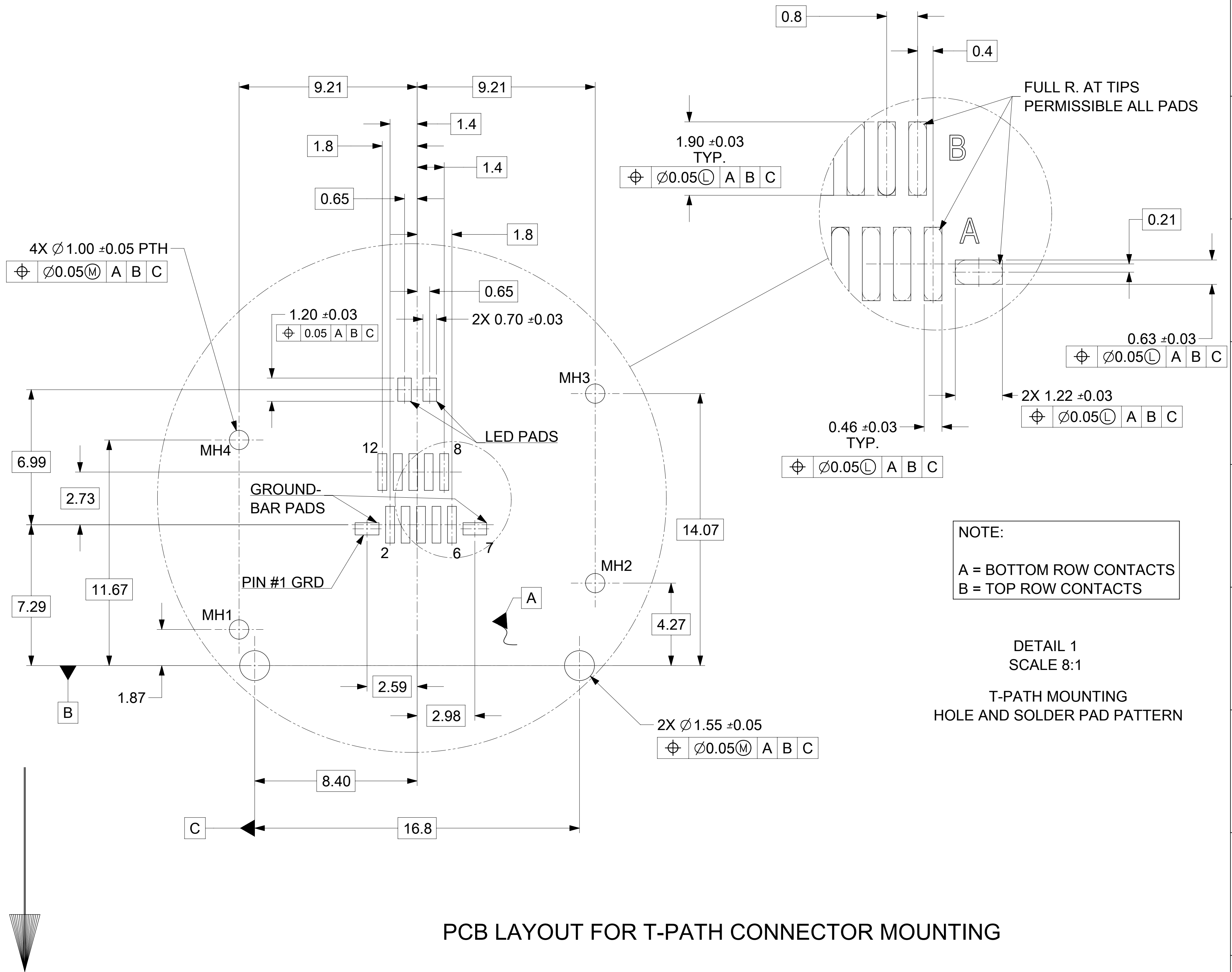
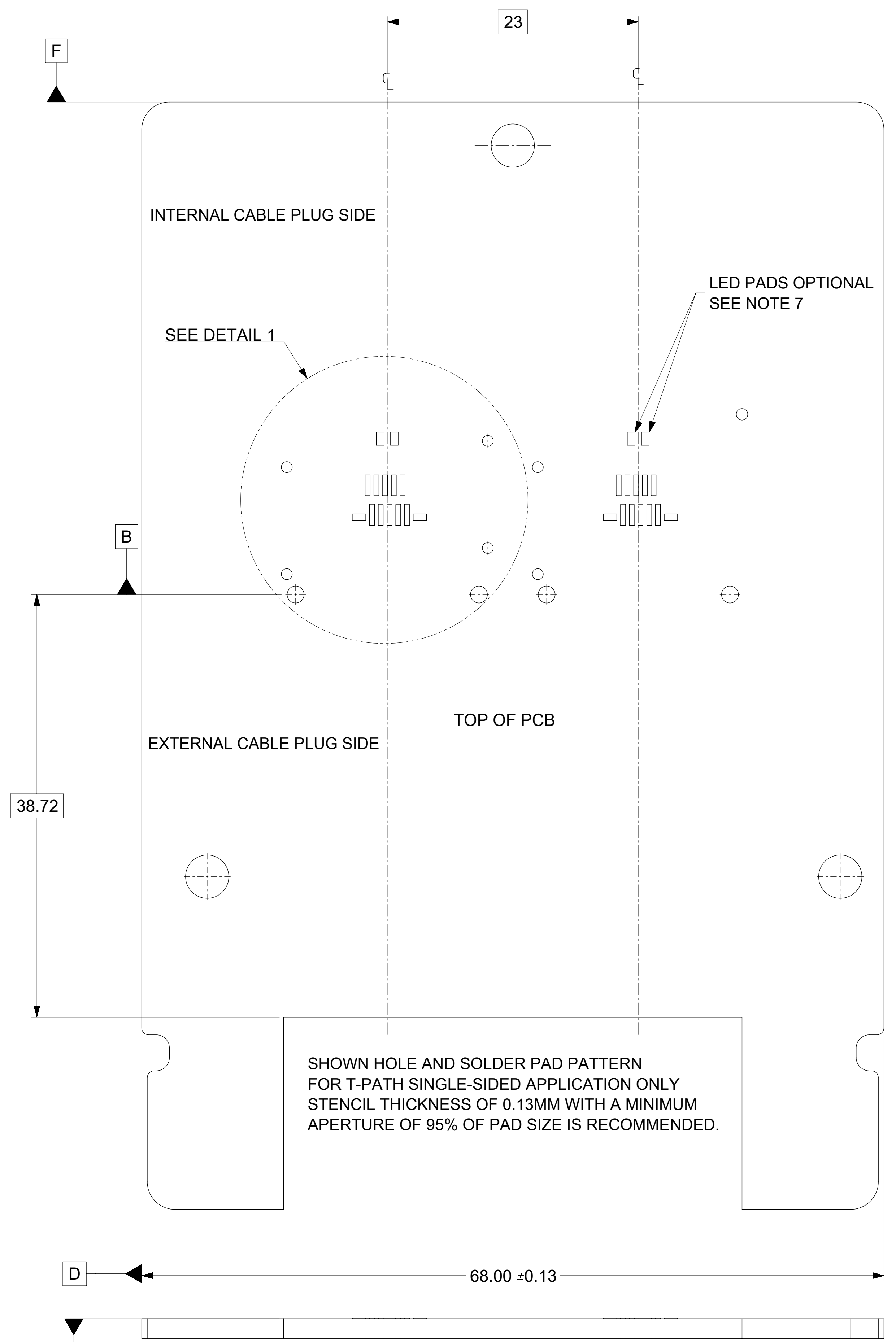


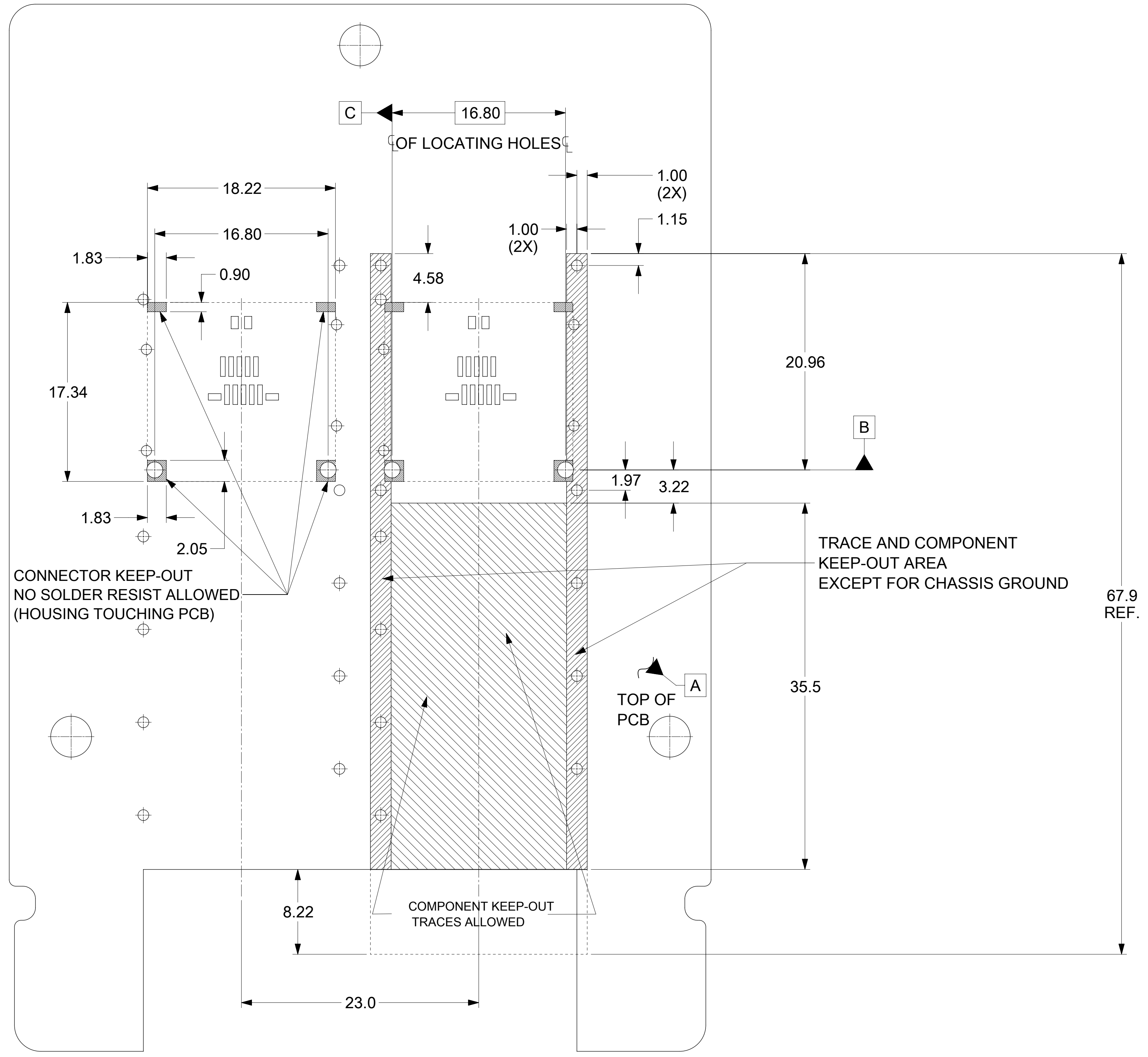
- NOTES:
- MATERIAL - HOUSING - HALOGEN FREE GLASS FILLED, LCP
UL 94V-0, COLOR: BLACK
SHELLS: 0.15 THICK NICKEL-SILVER ALLOY, UNPLATED
TERMINALS - HIGH PERFORMANCE COPPER ALLOY
 - PLATING - CONTACT AREA - 0.76 μm MIN GOLD OVER 2.54 μm NICKEL
SOLDER AREA - 2.54 - 5.09 μm TIN OVER 2.54 μm MIN NICKEL
 - DATE CODE: 4 DIGIT (3 DIGIT DAY, 1 DIGIT YEAR)
 - CONFORMS TO PRODUCT SPECIFICATION: PS-172604-0001
 - CONNECTOR ASSEMBLY IS RoHS AND LOW HALOGEN COMPLIANT
 - DIMENSIONS AND TOLERANCES CONFORM TO AMSE Y14.5 2009
 - LED IS OPTIONAL. RECOMMENDED LED PACKAGE: 1608/0603 0.4mm HIGH MAX.
 - PACKAGING: TAPE AND REEL. PER PK-172604-9001.
 - CONNECTOR TO BE USED IN CONJUNCTION WITH EMI CAGES SHOWN ON DRAWING SD-172604-2100
 - IFP CABLE PLUG TO HAVE 1.0mm THICK PCB.

QUALITY SYMBOLS		THIS DRAWING CONTAINS INFORMATION THAT IS PROPRIETARY TO MOLEX ELECTRONIC TECHNOLOGIES, LLC AND SHOULD NOT BE USED WITHOUT WRITTEN PERMISSION		GENERAL TOLERANCES (UNLESS SPECIFIED)		DIMENSION UNITS		SCALE									
⊕ = 0	∠ = 3	∇ = 0	∇ = 0	∇ = 0	∇ = 0	mm	4:1	DRWN BY	DATE			T-PATH CONNECTOR HARDTOP ASSEMBLY					
∇ = 0	∇ = 0	∇ = 0	∇ = 0	∇ = 0	∇ = 0	ANGULAR TOL ± 0.5 °		4 PLACES ±	3 PLACES ±	2 PLACES ±	1 PLACE ±	0 PLACES ±	DRWN BY	DATE	PRODUCT CUSTOMER DRAWING		
∇ = 0	∇ = 0	∇ = 0	∇ = 0	∇ = 0	∇ = 0	DRAFT WHERE APPLICABLE MUST REMAIN WITHIN DIMENSIONS		DRWN BY	DATE	DRWN BY	DATE	DRWN BY	DATE	DRWN BY	DATE	SERIES	
∇ = 0	∇ = 0	∇ = 0	∇ = 0	∇ = 0	∇ = 0			DRWN BY	DATE	DRWN BY	DATE	DRWN BY	DATE	DRWN BY	DATE	MATERIAL NUMBER	
∇ = 0	∇ = 0	∇ = 0	∇ = 0	∇ = 0	∇ = 0			DRWN BY	DATE	DRWN BY	DATE	DRWN BY	DATE	DRWN BY	DATE	CUSTOMER	
∇ = 0	∇ = 0	∇ = 0	∇ = 0	∇ = 0	∇ = 0			DRWN BY	DATE	DRWN BY	DATE	DRWN BY	DATE	DRWN BY	DATE	GENERAL	
∇ = 0	∇ = 0	∇ = 0	∇ = 0	∇ = 0	∇ = 0			DRWN BY	DATE	DRWN BY	DATE	DRWN BY	DATE	DRWN BY	DATE	DOCUMENT NUMBER	
∇ = 0	∇ = 0	∇ = 0	∇ = 0	∇ = 0	∇ = 0			DRWN BY	DATE	DRWN BY	DATE	DRWN BY	DATE	DRWN BY	DATE	DOC TYPE	
∇ = 0	∇ = 0	∇ = 0	∇ = 0	∇ = 0	∇ = 0			DRWN BY	DATE	DRWN BY	DATE	DRWN BY	DATE	DRWN BY	DATE	DOC PART	
∇ = 0	∇ = 0	∇ = 0	∇ = 0	∇ = 0	∇ = 0			DRWN BY	DATE	DRWN BY	DATE	DRWN BY	DATE	DRWN BY	DATE	SHEET NUMBER	
∇ = 0	∇ = 0	∇ = 0	∇ = 0	∇ = 0	∇ = 0			DRWN BY	DATE	DRWN BY	DATE	DRWN BY	DATE	DRWN BY	DATE	1 OF 3	



FRONT OF CONNECTOR
(PLUG MODULE SIDE)

QUALITY SYMBOLS	THIS DRAWING CONTAINS INFORMATION THAT IS PROPRIETARY TO MOLEX ELECTRONIC TECHNOLOGIES, LLC AND SHOULD NOT BE USED WITHOUT WRITTEN PERMISSION		GENERAL TOLERANCES (UNLESS SPECIFIED)		DIMENSION UNITS	SCALE	molex		
▽ = 0	2018/01/09		ANGULAR TOL ± 0.5 °		mm	4:1			
▽ = 0	2018/01/15		4 PLACES ±		DRWN BY	DATE	PRODUCT CUSTOMER DRAWING		
▽ = 0	2018/01/24		3 PLACES ±		MWOLFE	2017/05/12	SERIES	MATERIAL NUMBER	CUSTOMER
▽ = 0	REV TAIL POSITIONS		2 PLACES ± 0.13		CHKD BY	DATE	172604	172604-0003	GENERAL
▽ = 0	EC NO: 170877		1 PLACE ± 0.25		BBARKER	2017/05/12	DOCUMENT NUMBER	DOC TYPE	DOC PART SHEET NUMBER
▽ = 0	DRWN: ABN		0 PLACES ±		APPR BY	DATE	SD-172604-0003	PSD	001
▽ = 0	CHKD: SVANG01		DRAFT WHERE APPLICABLE MUST REMAIN WITHIN DIMENSIONS		SMILLER	2017/05/19	2 OF 3		
▽ = 0	REV APPR: SMILLER		DRAWING SIZE		THIRD ANGLE PROJECTION				
▽ = 0			D						



**T-PATH CONNECTOR AND EMI CAGE
KEEP-OUT ZONES**

THIS DRAWING CONTAINS INFORMATION THAT IS PROPRIETARY TO MOLEX ELECTRONIC TECHNOLOGIES, LLC AND SHOULD NOT BE USED WITHOUT WRITTEN PERMISSION										
QUALITY SYMBOLS	EC NO: 170877 DRWN: ABN CHKD: SVANG01 REV APPR: SMILLER	GENERAL TOLERANCES (UNLESS SPECIFIED)		DIMENSION UNITS	SCALE					
		ANGULAR TOL ± 0.5 °		mm	4:1					
▽ = 0	REV TAIL POSITIONS	4 PLACES ±	DRWN BY	DATE		T-PATH CONNECTOR HARDTOP ASSEMBLY				
▽ = 0		3 PLACES ±	MWOLFE	2017/05/12						
▽ = 0		2 PLACES ± 0.13	CHKD BY	DATE						
▽ = 0		1 PLACE ± 0.25	BBARKER	2017/05/12		PRODUCT CUSTOMER DRAWING				
▽ = 0		0 PLACES ±	APPR BY	DATE						
▽ = 0			SMILLER	2017/05/19		SERIES	MATERIAL NUMBER	CUSTOMER		
▽ = 0		DRAFT WHERE APPLICABLE MUST REMAIN WITHIN DIMENSIONS		DRAWING SIZE	THIRD ANGLE PROJECTION	172604	172604-0003	GENERAL		
▽ = 0				D		DOCUMENT NUMBER	DOC TYPE	DOC PART	SHEET NUMBER	
						SD-172604-0003	PSD	001	3 OF 3	