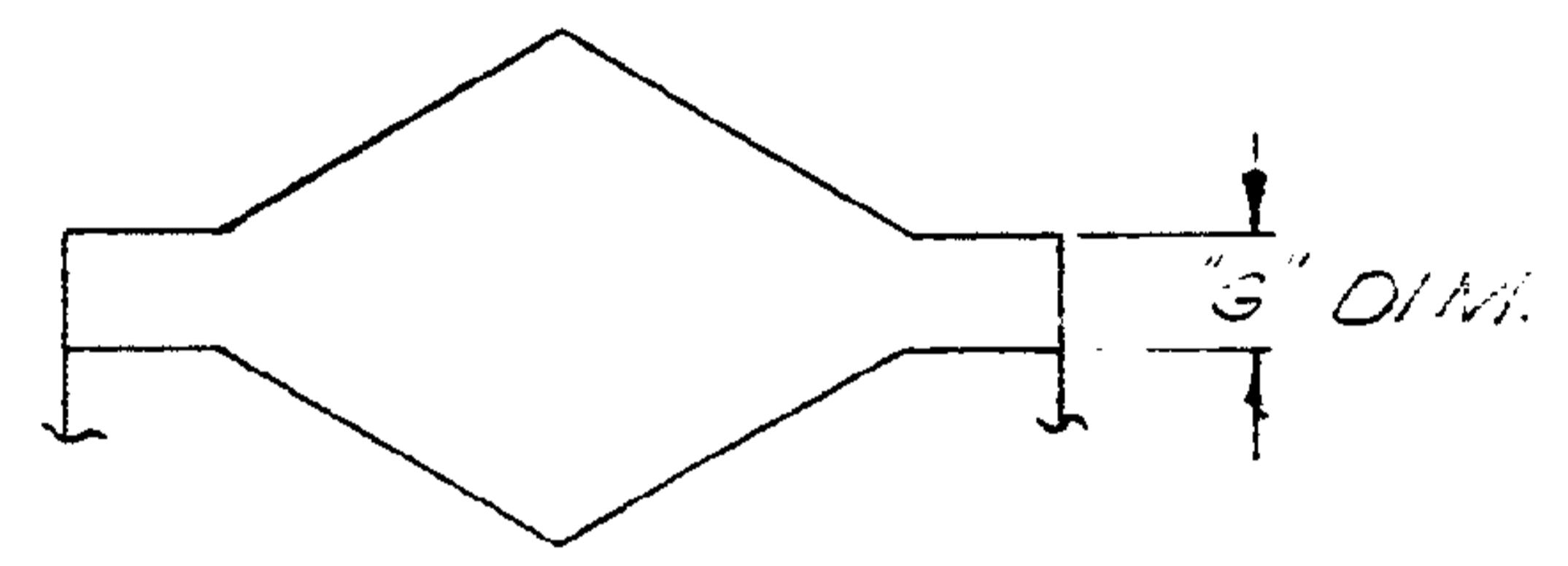


BARREL - CRIMP

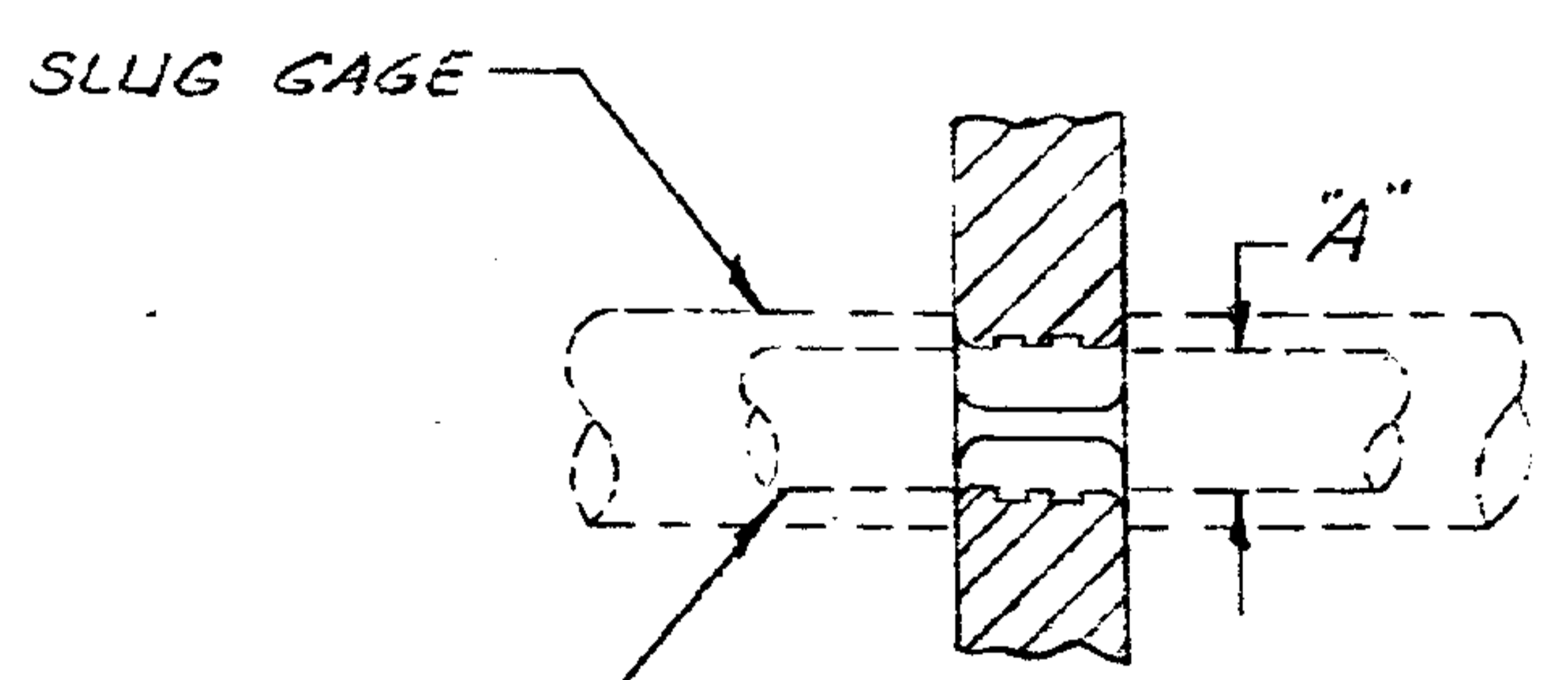


INSULATION - CRIMP

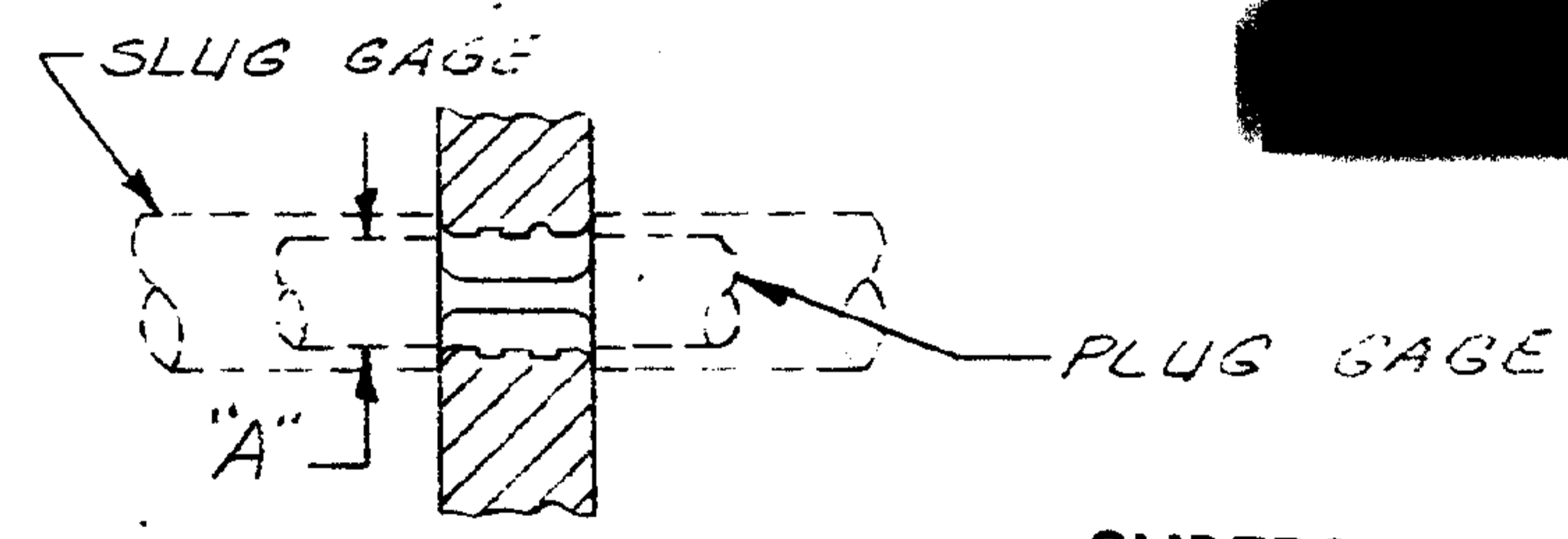
NOTE:
 1. WHEN PLUG OR SLUG GAGING OF BARREL CRIMP IT IS IMPORTANT TO NOTE THAT DIMENSION "A" IS THE FIGURE REQUIRED.

ENLARGED VIEW OF CRIMPS

WIRE SIZE	"A" DIM. BARREL CRIMP		"S" DIM. INSULATION CRIMP	
	GO	NO GO	GO MIN AT +1	NO GO FIN AT +4
22-16	.109	.115	.030	.110
16-14	.119	.125	.040	.120

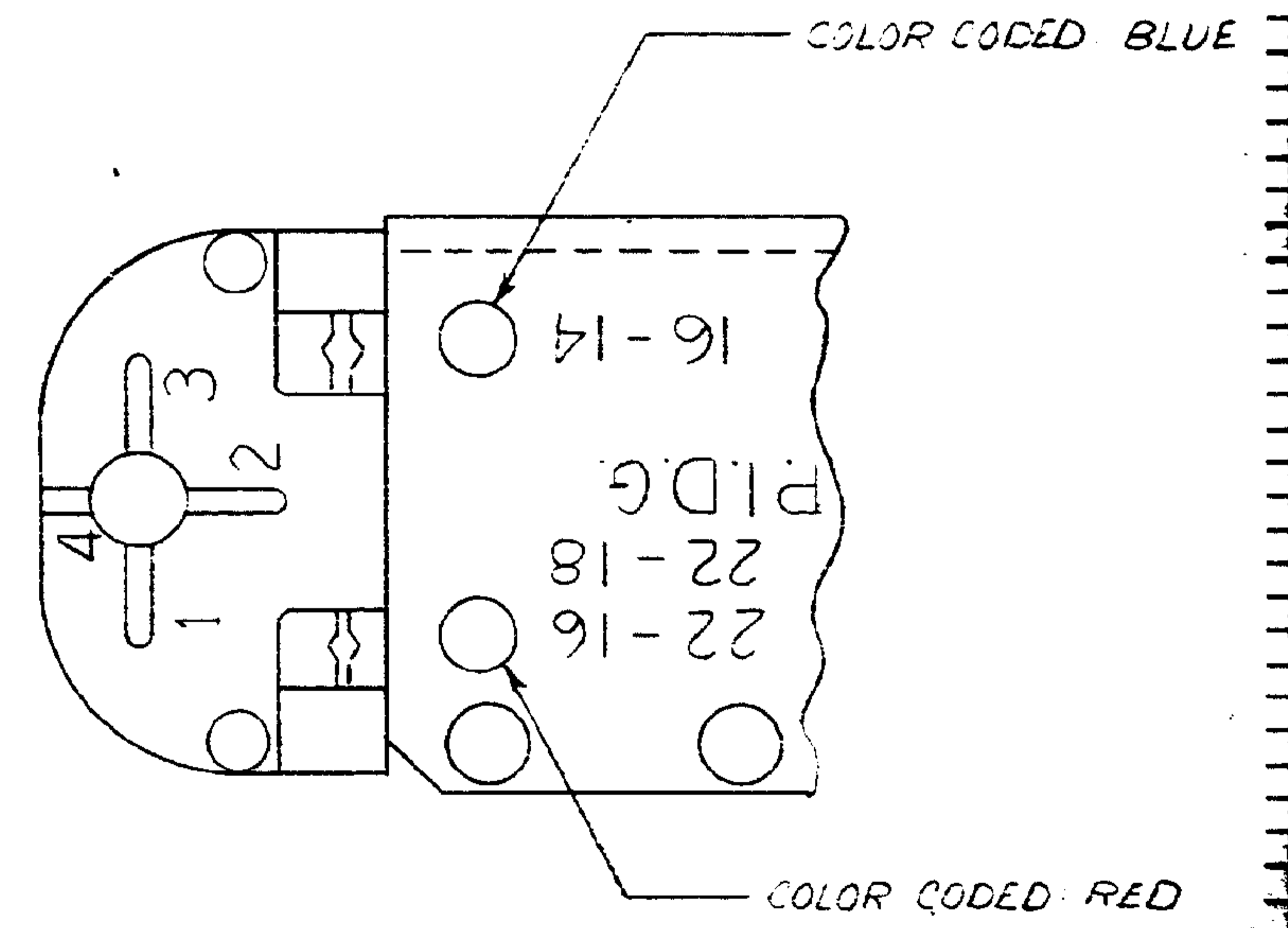


BARREL INSERTS 16-14



BARREL INSERTS 22-16

SUPERSEDED BY LS 1610



DIMENSIONS IN INCHES DO NOT SCALE PRINT

J2	REVISED PER ECO-11-005294	RK	HMR	06 APR 11
LTR	REVISION RECORD	GR	CHK	DATE

REQUIRED PER ASSEMBLY 59250	DWG NUMBER	NAME	REMARKS	ITEM NO.
	DR B. S. Henfeld 12-28-66			
	CHK 1-4-67			
	DR 1-4-67			
MATERIAL AND FINISH		CUSTOMER COPY REFERENCE ONLY		
+		TE Connectivity CLASS + + +		
WIRE - RANGE - INSULATION		TYPE		
22-16/14-14		CONFINED CRESCENT PLUG		
TOLERANCE EXCEPT AS NOTED		SCALE	LOC	REV
± .015 ± .015		1:1	MO	59250 J2
DESCRIPTION		T HEAD ASSEMBLY		