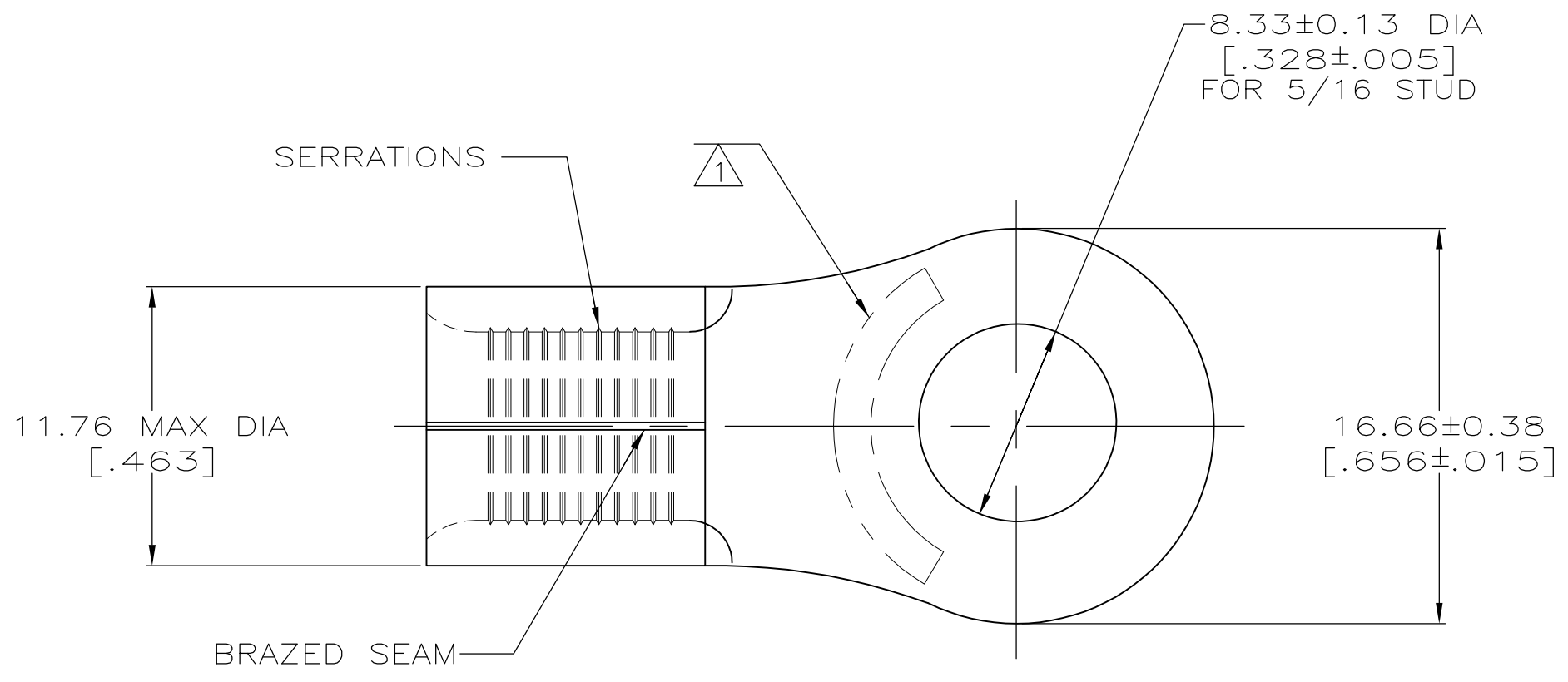
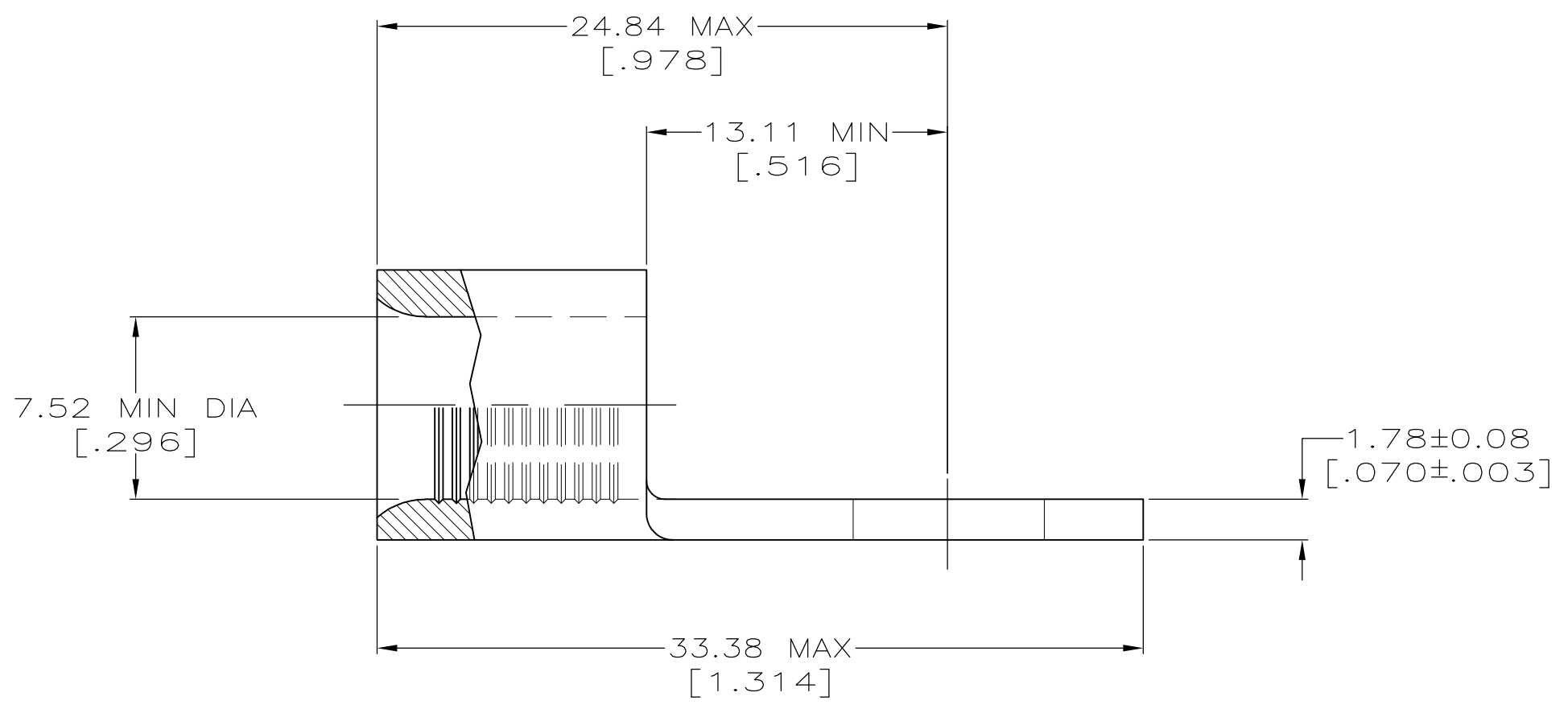


**METRIC**  
 DIMENSIONS LISTED IN mm [ INCHES ]



|                            |                           |
|----------------------------|---------------------------|
| <b>AMP</b><br>WIRE RANGE   | E13288<br>Listed          |
| 4 AWG<br>SOLID OR STRANDED | 4 AWG<br>STRANDED         |
| LR7189<br>Certified        | MILITARY P/N<br>AND CLASS |
| 4 AWG<br>SOLID OR STRANDED | NOT<br>APPLICABLE         |

STAMP AMP 4\* APPROX AS SHOWN



|                         |                |                  |           |
|-------------------------|----------------|------------------|-----------|
| SUPERCEDED BY 8-33470-2 | 25             | LOOSE PIECE, BAG | 8-33470-5 |
|                         | 50             | LOOSE PIECE, BOX | 8-33470-2 |
|                         | 500            | ON TAPE, REEL    | 2-33470-2 |
|                         | 500            | LOOSE PIECE, BOX | 33470-1   |
|                         | -              | LOOSE PIECE      | 33470     |
| QUANTITY                | PACKAGING TYPE |                  | PART NO   |

|  |  |   |
|--|--|---|
| <b>AMP INCORPORATED<br/>CUSTOMER SERVICE SYSTEMS</b>                             |  | MAX RECOMMENDED OPERATING TEMPERATURE:<br>170° C MAX  |
| FOR ADDITIONAL PRODUCT INFORMATION OR COPIES OF DRAWINGS AND TECHNICAL DOCUMENTS | PRODUCT INFORMATION CENTER<br>1-800-522-6752 | VOLTAGE RATING:<br>NOT APPLICABLE   |
| FOR APPLICATION TOOLING INFORMATION  | TOOLING ASSISTANCE CENTER<br>1-800-722-1111  | WIRE CROSS SECTIONAL AREA RANGE:<br>16.8-26.7mm <sup>2</sup> [33,100-52,600] CIR MILS<br>SOLID OR STRANDED  |
| FOR ORDER ENTRY  | 1-800-526-5142                               | THIS DRAWING IS A CONTROLLED DOCUMENT FOR AMP INCORPORATED. IT IS SUBJECT TO CHANGE AND THE CONTROLLING ENGINEERING ORGANIZATION SHOULD BE CONTACTED FOR THE LATEST REVISION. |

|   |  |   |   |
|---|--|---|---|
| THIS DRAWING IS A CONTROLLED DOCUMENT.  |  | DWN<br>TA BRINKMAN<br>3-29-93                                     | TE Connectivity                               |
| DIMENSIONS:<br>mm [INCHES]  |  | CHK<br>DA PATTERSON<br>3-29-93                                    |   |
| TOLERANCES UNLESS OTHERWISE SPECIFIED:  |  | APVD<br>DE MILLER<br>3-29-93                                      | NAME<br>TERMINAL, RING TONGUE,<br>SOLISTRAND™ |
| 0 PLC ± -<br>1 PLC ± -<br>2 PLC ± -<br>3 PLC ± -<br>4 PLC ± -<br>ANGLES ± ± - |  | PRODUCT SPEC<br>-   | SIZE<br>A2                                    |
| MATERIAL<br>COPPER PER<br>ASTM B-152<br>ANNEALED                              |  | FINISH<br>TIN PLATE<br>0.00254[0.00100]MIN<br>THK PER MIL-T-10727 | APPLICATION SPEC<br>-                         |
|   |  | WEIGHT<br>-   | CAGE CODE<br>00779                            |
|   |  |   | DRAWING NO<br>G-33470                         |
|   |  |   | RESTRICTED TO<br>-                            |
|   |  |   | SCALE<br>4:1                                  |
|   |  |   | SHEET<br>1 of 1                               |
|   |  |   | REV<br>H2                                     |
|   |  |   | CUSTOMER DRAWING                              |