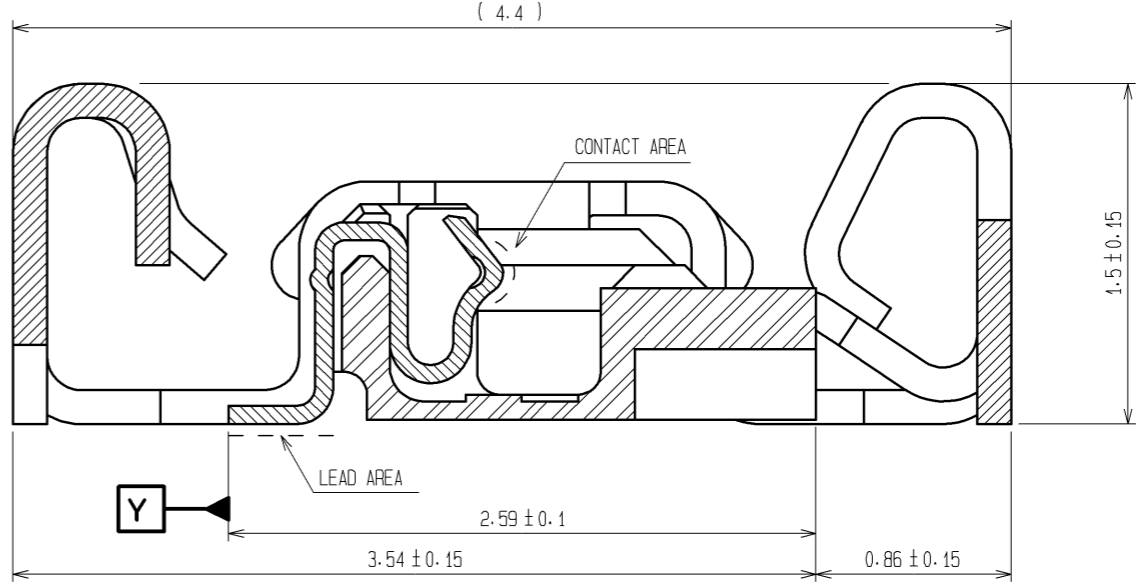
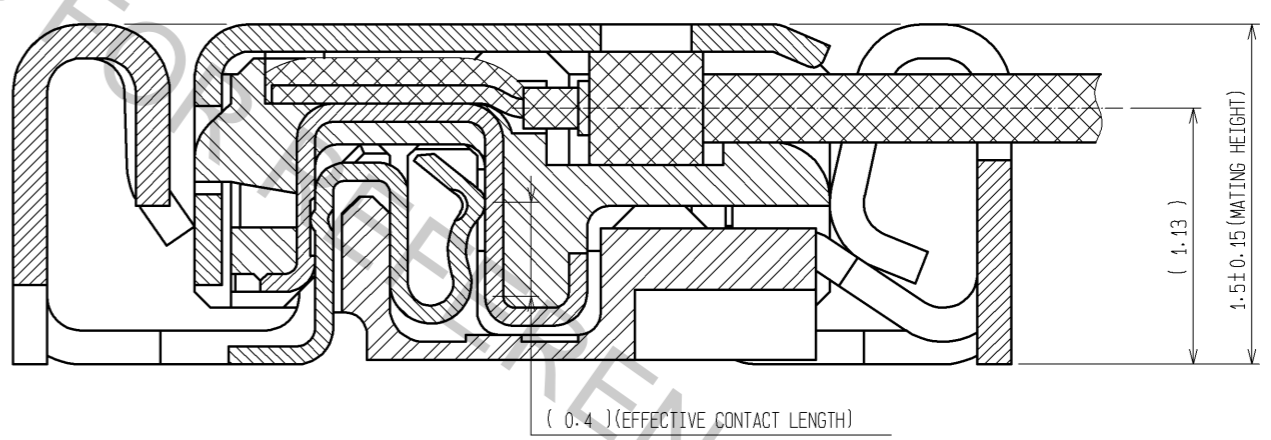


A-A (30:1) △



B-B (30:1) △



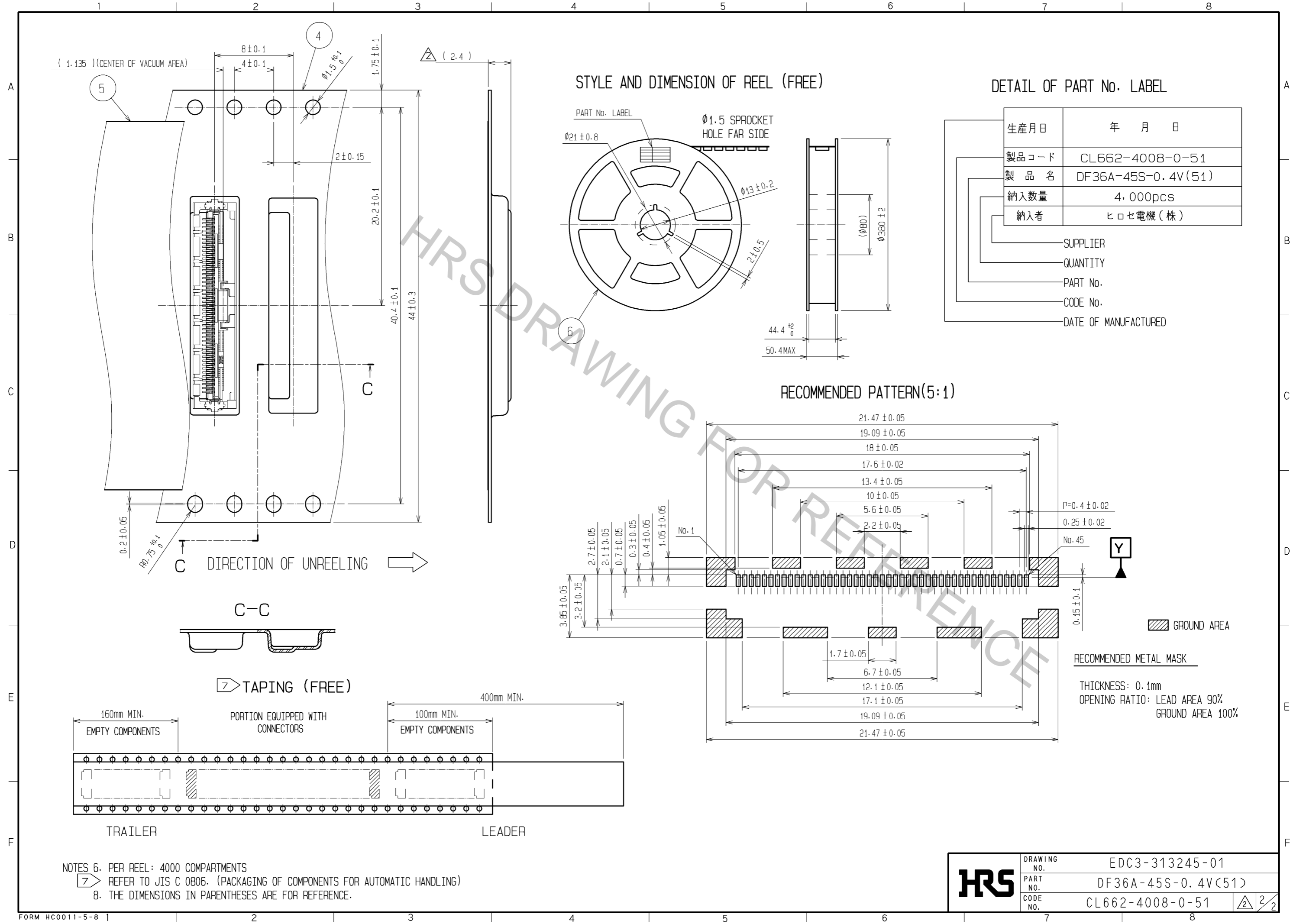
NOTES

1. LEAD CO-PLANARITY SHALL BE 0.1mm MAX.
2. STIFFENER IS REQUIRED FOR MOUNTING ONTO FPC IN ORDER TO AVOID STRESS BY FPC SLACKING TO MOUNTED CONNECTOR.
3. LOT No. INFORMATION IS SHOWN IN THE TABLE. EXAMPLE:BGFD
-YEAR:2008 MONTH:July DAY:15 LINE No.:4
4. UNMATING SHALL BE DONE WITH THE SPECIFIC EXTRACTION TOOL.
5. SOLDERING REWORK IS NOT POSSIBLE SINCE SOLDERING LEADS ARE COVERED BY METAL SHIELDING.

YEAR		MONTH		DAY						LINE No.	
YEAR	CODE	MONTH	CODE	DAY	CODE	DAY	CODE	DAY	CODE	LINE No.	CODE
10	0	Jan	A	1	1	11	B	21	M	1	A
11	1	Feb	B	2	2	12	C	22	N	2	B
12	2	Mar	C	3	3	13	D	23	P	3	C
13	3	Apr	D	4	4	14	E	24	Q	4	D
14	4	May	E	5	5	15	F	25	R	5	E
15	5	Jun	F	6	6	16	G	26	S	6	F
16	6	Jul	G	7	7	17	H	27	T	7	G
17	7	Aug	H	8	8	18	J	28	U	8	H
08	8	Sep	I	9	9	19	K	29	V	9	I
09	9	Oct	J	10	A	20	L	30	W	10	J
		Nov	K					31	X		
		Dec	L								

2	LCP	UL94V-0	6	PS	BLACK
1	PHOSPHOR BRONZE	CONTACT AREA : Au PLATING 0.3µm min LEAD AREA : Au PLATING 0.1µm min	5	POLYESTER	CLEAR
			4	PS	CLEAR
			3	PHOSPHOR BRONZE	WHOLE AREA : Sn PLATING 1µm min UNDER PLATING : Cu PLATING 0.2µm min
NO.	MATERIAL	FINISH . REMARKS	NO.	MATERIAL	FINISH . REMARKS
UNITS	mm	SCALE 5:1	COUNT 3	DESCRIPTION OF REVISIONS DIS-H-002943	DESIGNED SI. ISHII
				APPROVED : TY. OMA 06.12.18	CHECKED HK. UMEHARA 08.06.04
				CHECED : TS. SAKATA 06.12.17	DATE
				DESIGNED : MN. KENJO 06.12.15	DRAWING NO. EDC3-313245-01
				DRAWN : MN. KENJO 06.12.15	PART NO. DF36A-45S-0.4V(51)
					CODE NO. CL662-4008-0-51

Apr.1.2017 Copyright 2017 HIROSE ELECTRIC CO., LTD. All Rights Reserved.



NOTES 6. PER REEL: 4000 COMPARTMENTS
 7. REFER TO JIS C 0806. (PACKAGING OF COMPONENTS FOR AUTOMATIC HANDLING)
 8. THE DIMENSIONS IN PARENTHESES ARE FOR REFERENCE.

HRS	DRAWING NO.	EDC3-313245-01
	PART NO.	DF36A-45S-0.4V(51)
	CODE NO.	CL662-4008-0-51
		2/2